

# PLAZA 7-21

---

675 East 2100 South SLC, UT 84106

Major Renovations and Spec Suites Now Complete



OFFICE SPACE FOR LEASE





# BUILDING HIGHLIGHTS



715 - 11,368 RSF  
available suites



Generous  
TI allowance



Numerous on-site  
retail amenities



\$31.00/SF  
full service lease rate



4/1,000 parking  
ratio with secured  
and covered parking



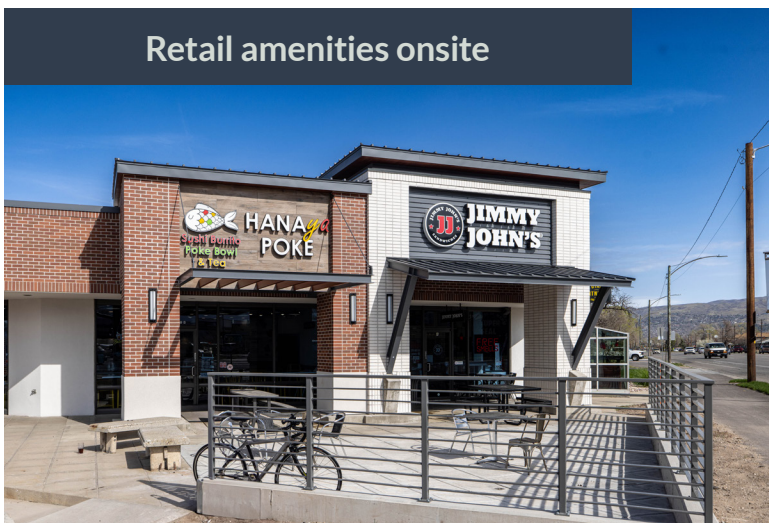
Building signage  
available for  
qualified tenants







Retail amenities onsite



Spec suite kitchen finishes



## ASANA PARTNERS

New ownership with proven experience  
investing and creating value in vibrant,  
dynamic mixed-use neighborhoods.





# FLOOR PLANS

Move-in ready spec suites available



## Floor One

Suite 125: 715 RSF

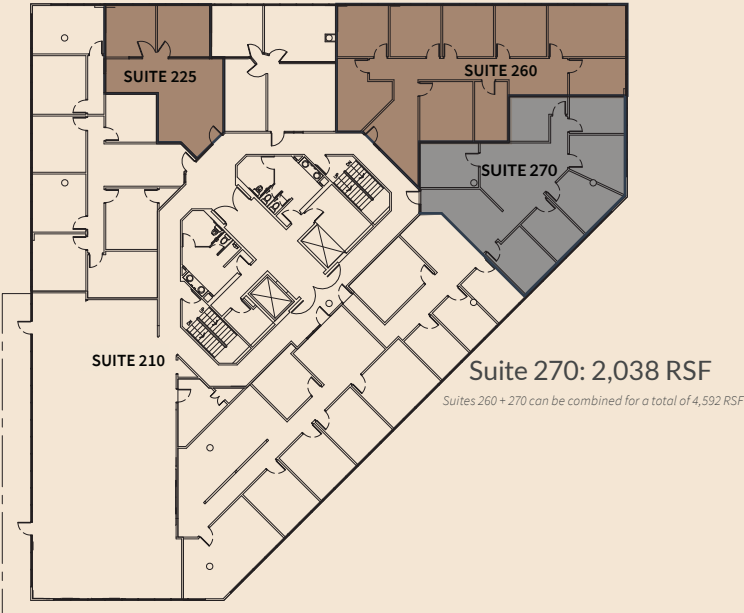
Suite 120: 1,263 RSF



## Floor Two

Suite 225: 978 RSF

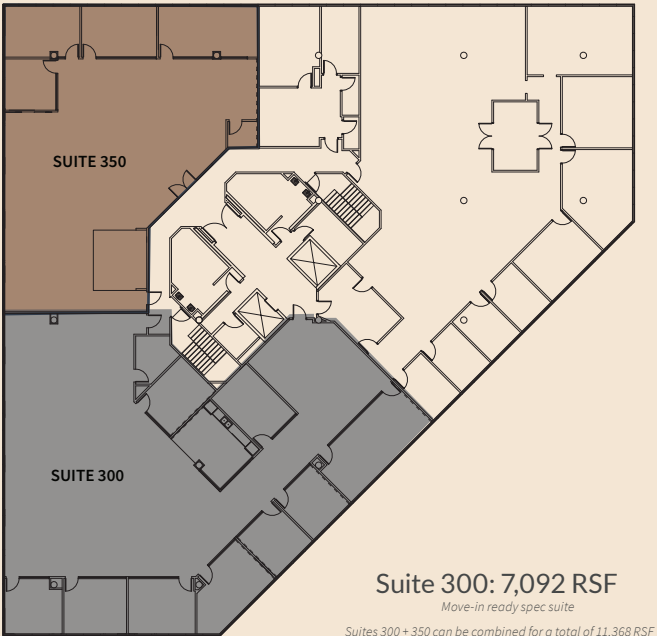
Suite 260: 2,554 RSF



## Floor Three

Suite 350: 4,276 RSF

*Move-in ready spec suite*



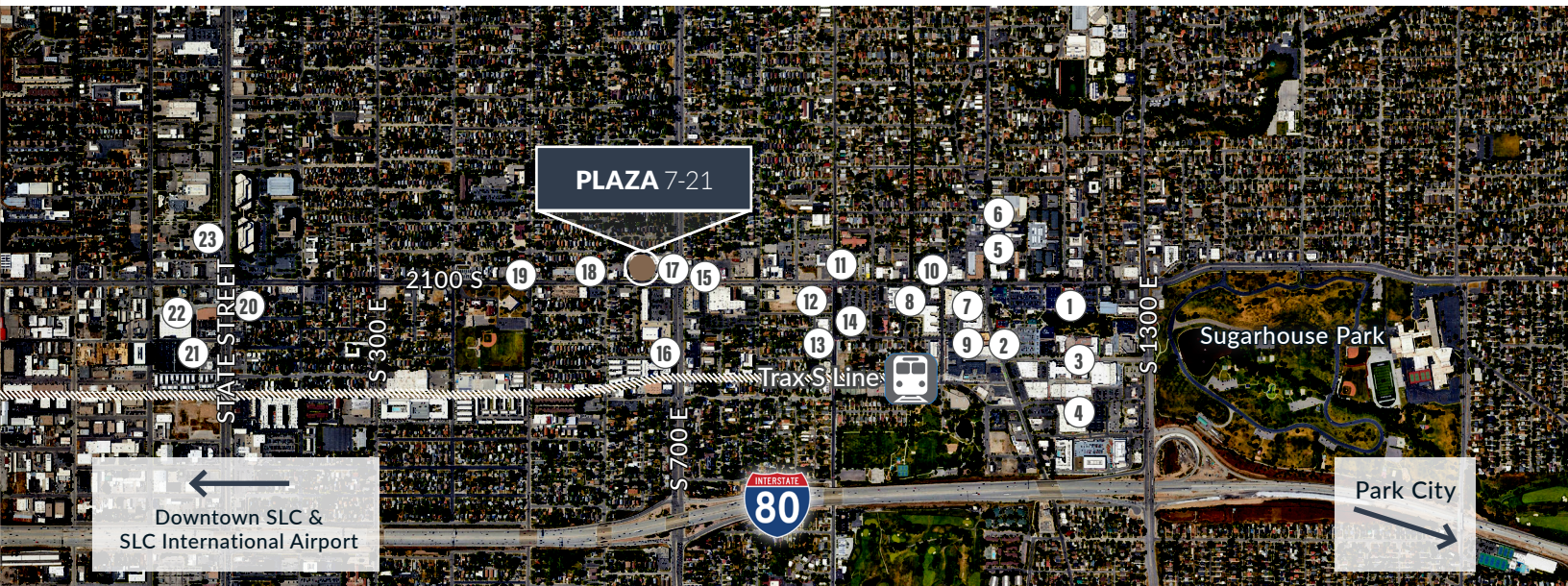


## Conveniently located in Sugarhouse

One of the hippest, most vibrant neighborhoods in Salt Lake, Sugarhouse has plenty of restaurants, bars, breweries, shops, unexpected hangouts, and one big, glorious park with sweeping mountain views.



Laurie Bray



### AMENITIES

- |                                 |                       |   |                            |
|---------------------------------|-----------------------|---|----------------------------|
| 1. Chick-fil-A                  | 7. Wasatch Brew Pub   | 13. Trolley Wing Co.  | 18. TAPPO                  |
| 2. Whole Foods                  | 8. FedEx              | 14. Smith's Food & Drug   | 19. Saffron Valley         |
| 3. Spitz - Mediterranean        | 9. Buffalo Wild Wings | 15. Beans & Brews   | 20. Starbucks              |
| 4. Target                       | 10. Chipotle          | 16. Chip Cookies  | 21. Raising Cane's Chicken |
| 5. Sugarhouse Coffee            | 11. Walgreens         | 17. Jimmy John's, Pretty Bird, Jinya Ramen, Hanaya Poke, Crumbl | 22. Winco Foods            |
| 6. United States Postal Service | 12. SugarHouse BBQ    |   | 23. Rusted Sun Pizza       |

### DRIVE TIMES

**Downtown Salt Lake City:**  
10 minutes  
**SLC International Airport:**  
18 minutes  
**Park City:**  
30 minutes



# PLAZA 7-21

675 East 2100 South SLC, UT 84106



For more information, please contact:

**Jami Marsh**

+1 801 456 9514

[jami.marsh@jll.com](mailto:jami.marsh@jll.com)

**Amanda Lawson**

+1 385 419 3191

[amanda.lawson@jll.com](mailto:amanda.lawson@jll.com)

©2025 Jones Lang LaSalle LP, Inc. All rights reserved. All information contained herein is from sources deemed reliable; however, no representation or warranty is made to the accuracy thereof.

