



For Sublease

±372,195 SF
Warehouse Space

14900 W Schulte Rd, Tracy, CA

 **JLL** SEE A BRIGHTER WAY

Jones Lang LaSalle Brokerage, Inc. Real Estate License #: 01856260

14900 W Schulte Rd, Tracy, CA / For Sublease

Property Specs

Building Size	±490,000 SF
Total Available	±372,195 SF
Office	±855 SF
Dock Doors	58
Grade-Level Doors	3
Clear Height	±36'
Column Spacing	56' x 60'
Power	TBD
Sprinklers	ESFR
Truck Stalls	95
Auto Stalls	130
Year Built	2018
Highlights	<ul style="list-style-type: none">Secured truck courtBuilding is equipped with 24,000 (1,500 lb capacity) racked pallet positions Click here for more info
Master LED	2/28/2025
Sublease Rate	Contact Broker

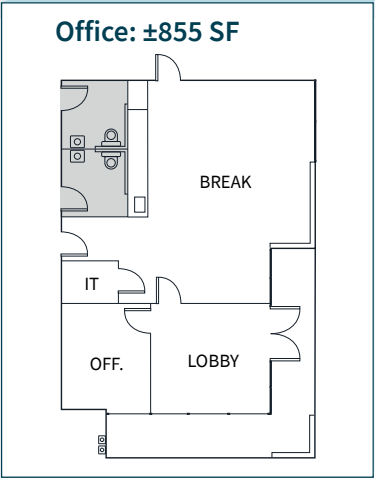
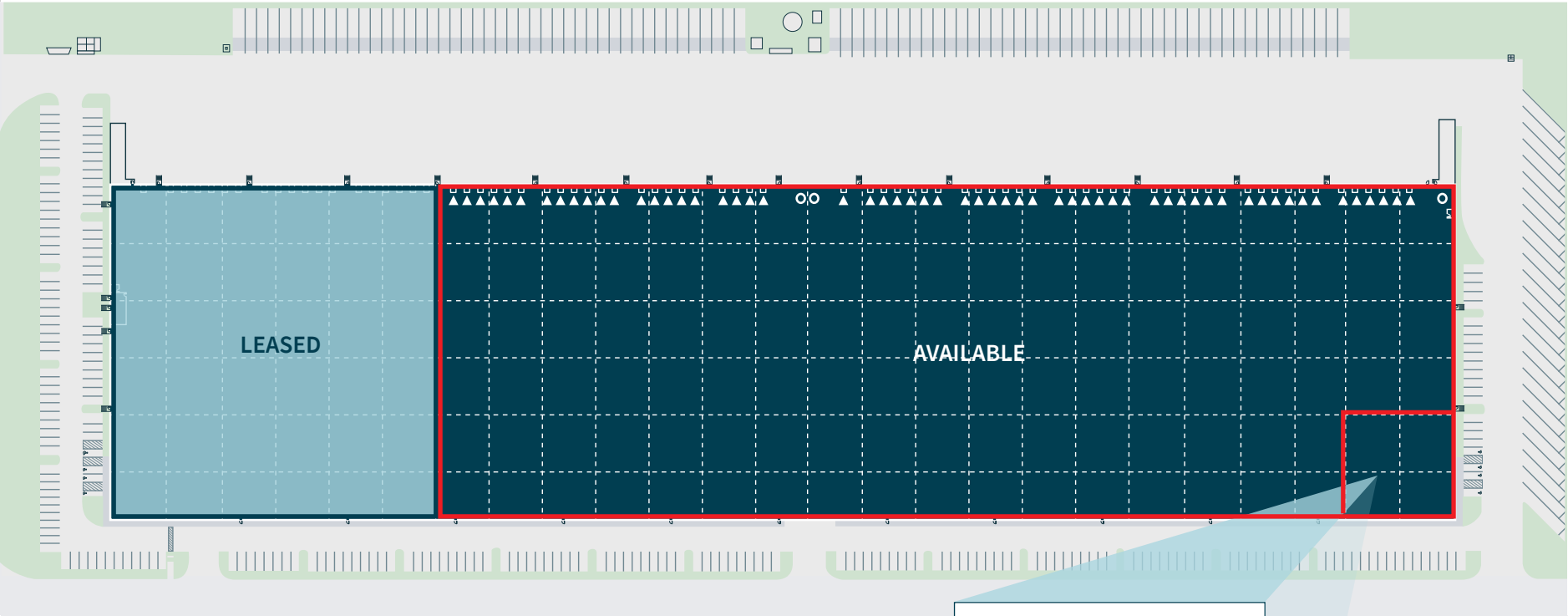


Floor plan

Total Available: ±372,195 SF

*FLOORPLAN NOT DRAWN TO SCALE

- ▲ DOCK DOOR
- GRADE LEVEL DOOR



N ←

Corporate Neighbors

- | | |
|----|---|
| 1 | Ghirardelli |
| 2 | ADESA Golden Gate |
| 3 | Owens & Minor |
| 4 | Melissa & Doug |
| 5 | Amazon |
| 6 | Musco Family,
Mccollister's Transportation |
| 7 | DHL, Synnex |
| 8 | Bunzl, Contract Metal Products |
| 9 | Costco |
| 10 | Safeway |
| 11 | AGP eGlass Plant |
| 12 | Best Buy |
| 13 | Costco |
| 14 | Zinus |
| 15 | Amazon |
| 16 | Medline |
| 17 | Williams Sonoma |
| 18 | FedEx |
| 19 | The Home Depot |
| 20 | Thermo Fisher |
| 21 | UPS |
| 22 | Costco |
| 23 | O-I Glass |



14900 W Schulte Rd, Tracy, CA / For Sublease

Location

- Easy access to Highways I-205 and I-5
- Located only 53 miles east of the Port of Oakland

Distance from Subject

UP Intermodal (Lathrop)	20 miles
Port of Stockton	30 miles
BNSF (Stockton)	35 miles
Modesto	35 miles
Oakland International Airport	45 miles
Port of Oakland	53 miles
San Francisco	60 miles
San Francisco International Airport	63 miles
Merced	64 miles
Sacramento	78 miles
Sacramento International Airport	87 miles



JLL

John Fondale, SIOR
Managing Director
+1 209 390 1694
john.fondale@jll.com
Lic. #01017415

Tim Mustin
Managing Director
+1 209 390 1687
tim.mustin@jll.com
Lic #01857876

Michael Matter
Vice President
+1 209 390 1702
michael.matter@jll.com
Lic # 01435801

Jack Fondale
Associate
+1 209 616 6057
jack.fondale@jll.com
Lic #02250595



Although information has been obtained from sources deemed reliable, neither Owner nor JLL makes any guarantees, warranties or representations, express or implied, as to the completeness or accuracy as to the information contained herein. Any projections, opinions, assumptions or estimates used are for example only. There may be differences between projected and actual results, and those differences may be material. The Property may be withdrawn without notice. Neither Owner nor JLL accepts any liability for any loss or damage suffered by any party resulting from reliance on this information. If the recipient of this information has signed a confidentiality agreement regarding this matter, this information is subject to the terms of that agreement. ©2025. Jones Lang LaSalle IP, Inc. All rights reserved