

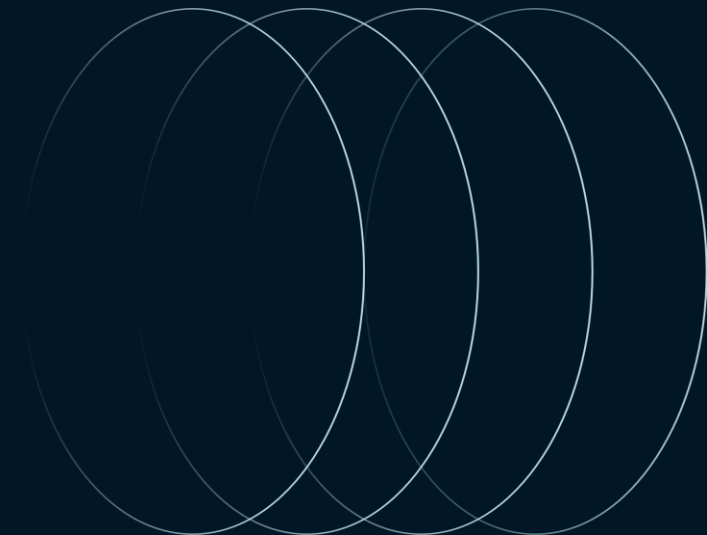
Reduced Rate: \$1.50/sf



Tech/R&D Space

For Sublease

150 Charcot Ave., San Jose
±22,622 SF





Size
22,622 SF



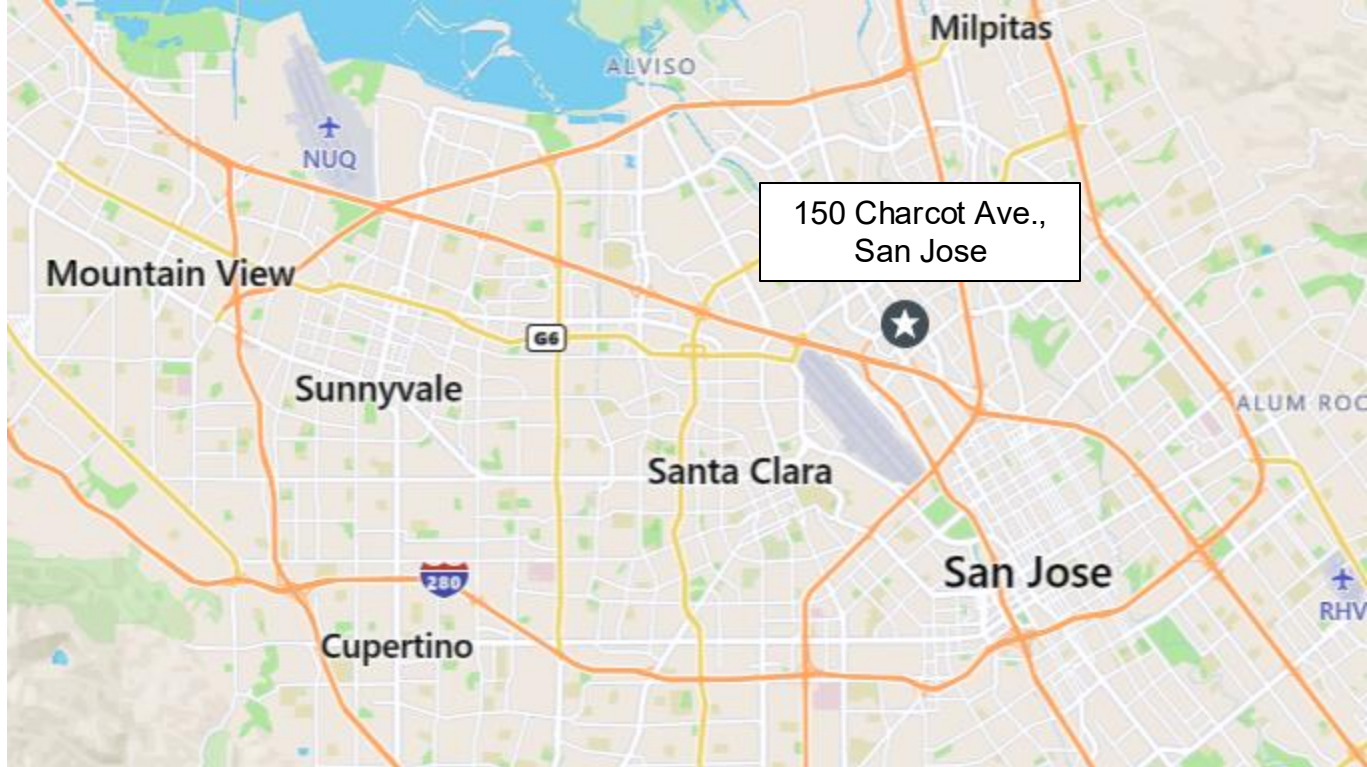
**Lease
Expiration Date**
March 31, 2027



Power
800A, 120/208V



Type
R&D/Flex/Manufacturing

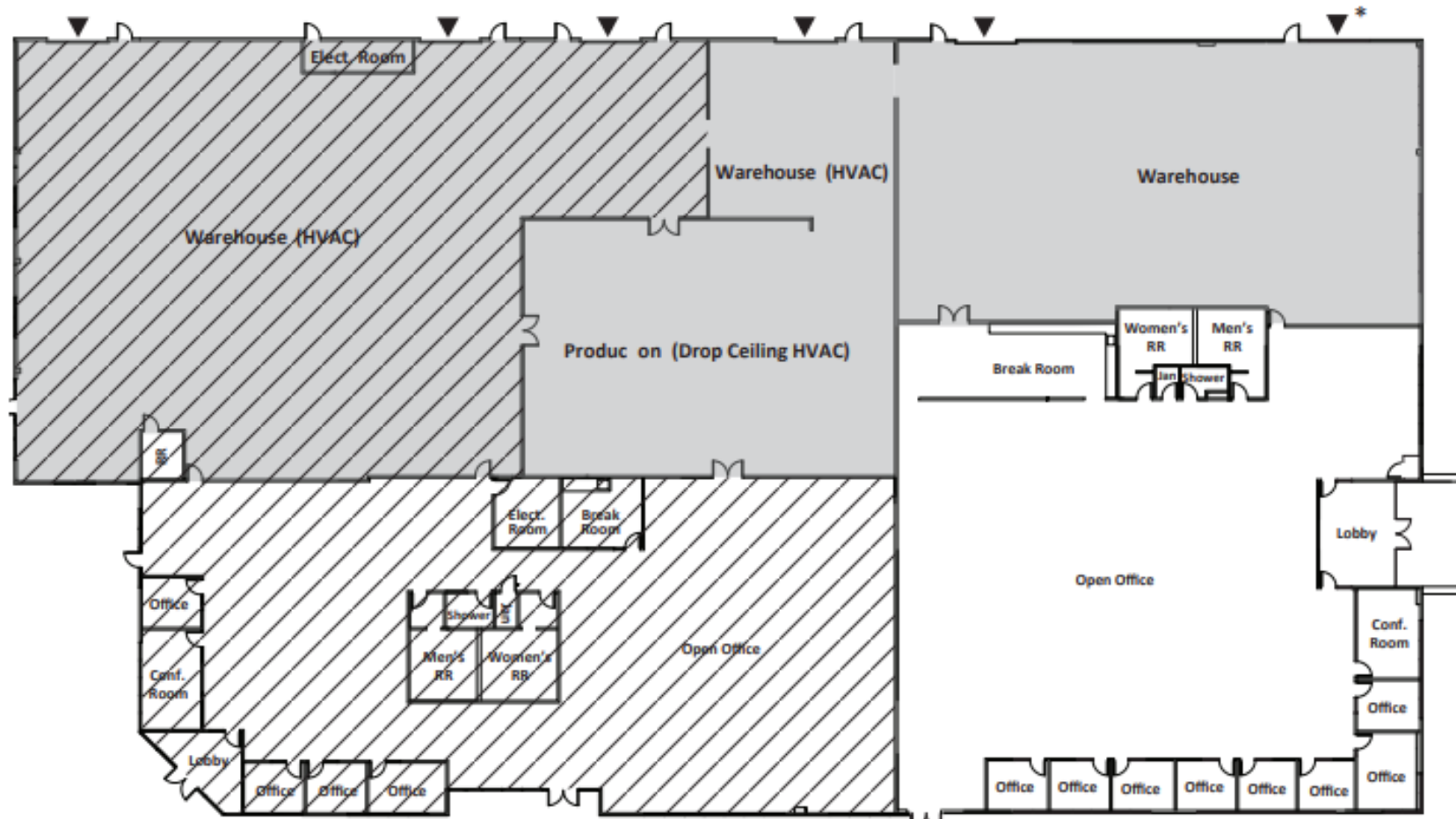


Space Highlights

- Flexible Space Suitable for R&D, Manufacturing, and Office Use
- Power: Three (3) Subpanels Rated up to 800A, 120/208V (Tenant to Verify)
- Partially Furnished Office Interiors
- Ample Parking: 4/1,000
- Two (12' x 10') Grade Level roll-up doors with covered platform
- +/- 12-14' Warehouse Clear Height
- HVAC in warehouse and labs

Floorplan

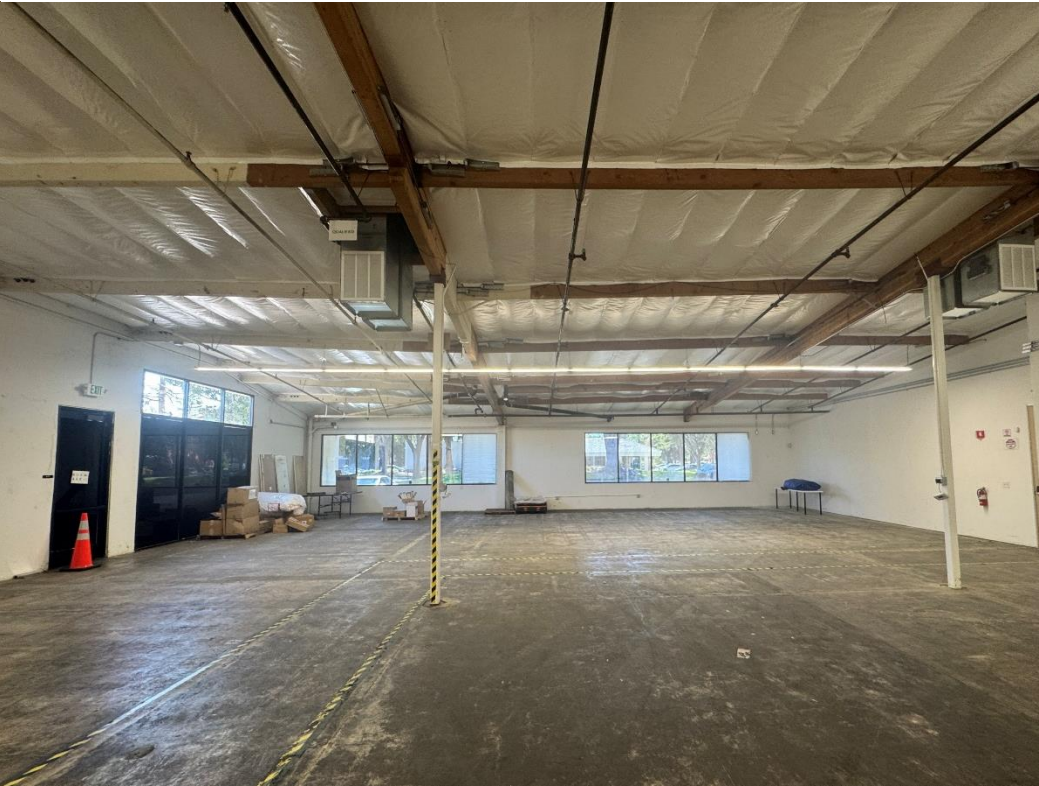
±22,622 SF



- Not Available
- Concrete
- GL Door
- GL Door (Glassed-in)

NOT TO SCALE





Local Amenities

Restaurants

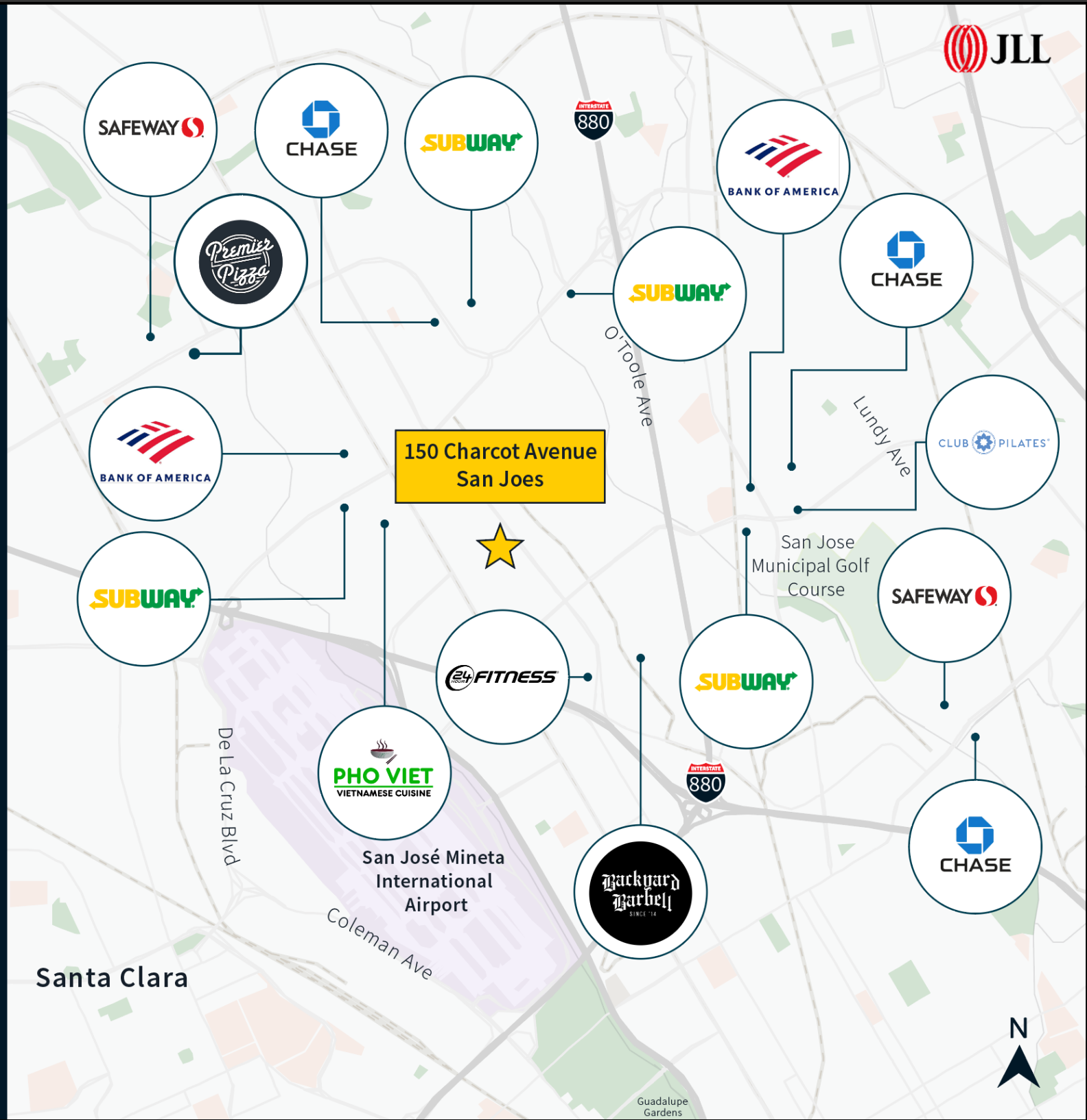
Safeway
Subway
Pho Viet
Premier Pizza

Banks

Bank of America
Chase

Gym's

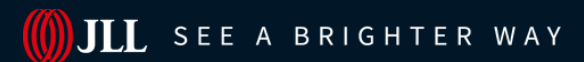
24 Hour Fitness
Backyard Barbell
Club Pilates





Dave Ross
+1 415 450 8588
Dave.Ross@jll.com
RE License # 02052598

Connor McClean
+1 971 713 0839
Connor.McClean@jll.com
RE License # 02236341



© 2025 Jones Lang LaSalle IP, Inc. All rights reserved. The information contained in this document is proprietary to Jones Lang LaSalle and shall be used solely for the purposes of evaluating this proposal. All such documentation and information remains the property of Jones Lang LaSalle and shall be kept confidential. Reproduction of any part of this document is authorized only to the extent necessary for its evaluation. It is not to be shown to any third party without the prior written authorization of Jones Lang LaSalle. All information contained herein is from sources deemed reliable; however, no representation or warranty is made as to the accuracy thereof.

Jones Lang LaSalle Americas, Inc. License #01856260