



**2,689 SF Available**

## **Arbor Plaza**

126 W Sego Lily Dr, Suite  
265 Sandy, UT 84070

Turnkey Office Space for Sublease



# 126 W Segoe Lily Dr

## Suite 265: 2,689 SF

---



**Available:** Now



**Sublease Rate:** \$23.00 PSF / Full Service



**Term Through:** September 30, 2027



**Plug and Play:** Furniture Included



**Parking:** 4/1,000 Surface Parking



## Highlights

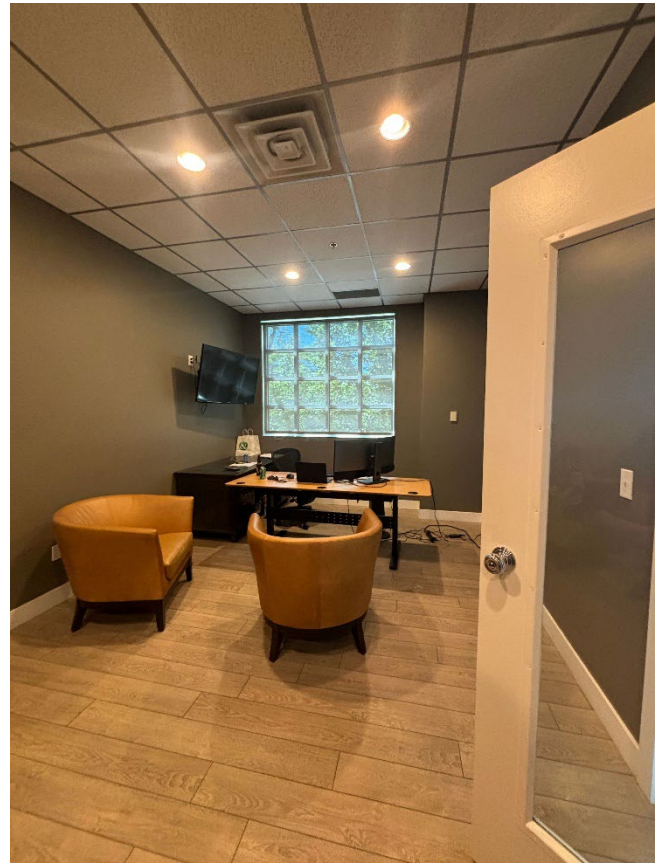
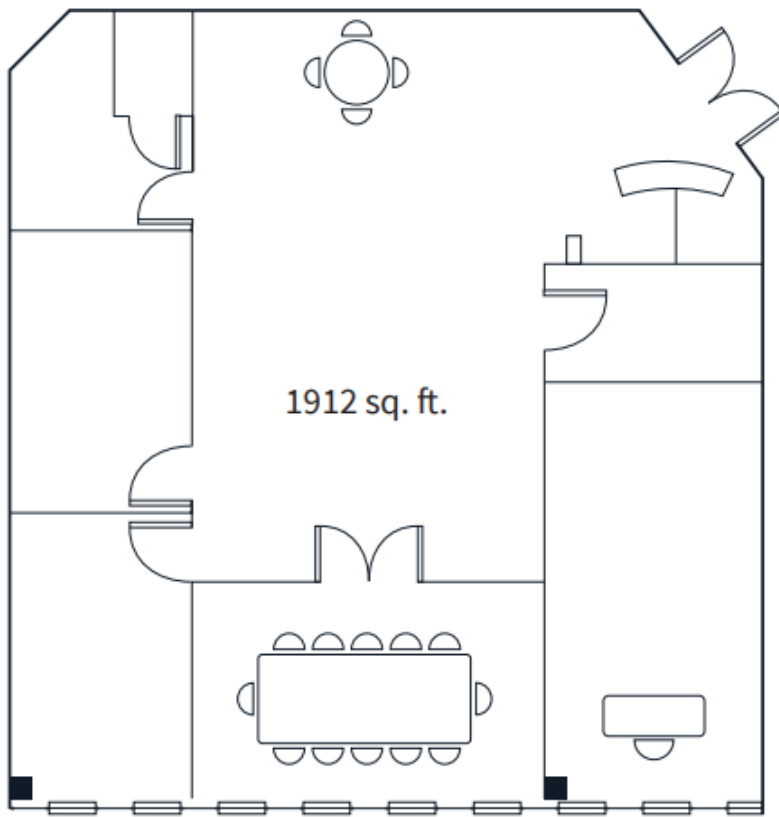
- ♦ Located next to the Shops at South Towne and surrounded by restaurants, retail, hospitality and banking amenities
- ♦ Bus service directly in front of building with service to TRAX/FrontRunner station
- ♦ Easy access to I-15 via 9000 S and 10600 S on/off ramps

David Nixon  
+1 801 456 9518  
[David.nixon@jll.com](mailto:David.nixon@jll.com)

Krystle Farrall  
+1 801 456 9524  
[Krystle.farrall@jll.com](mailto:Krystle.farrall@jll.com)

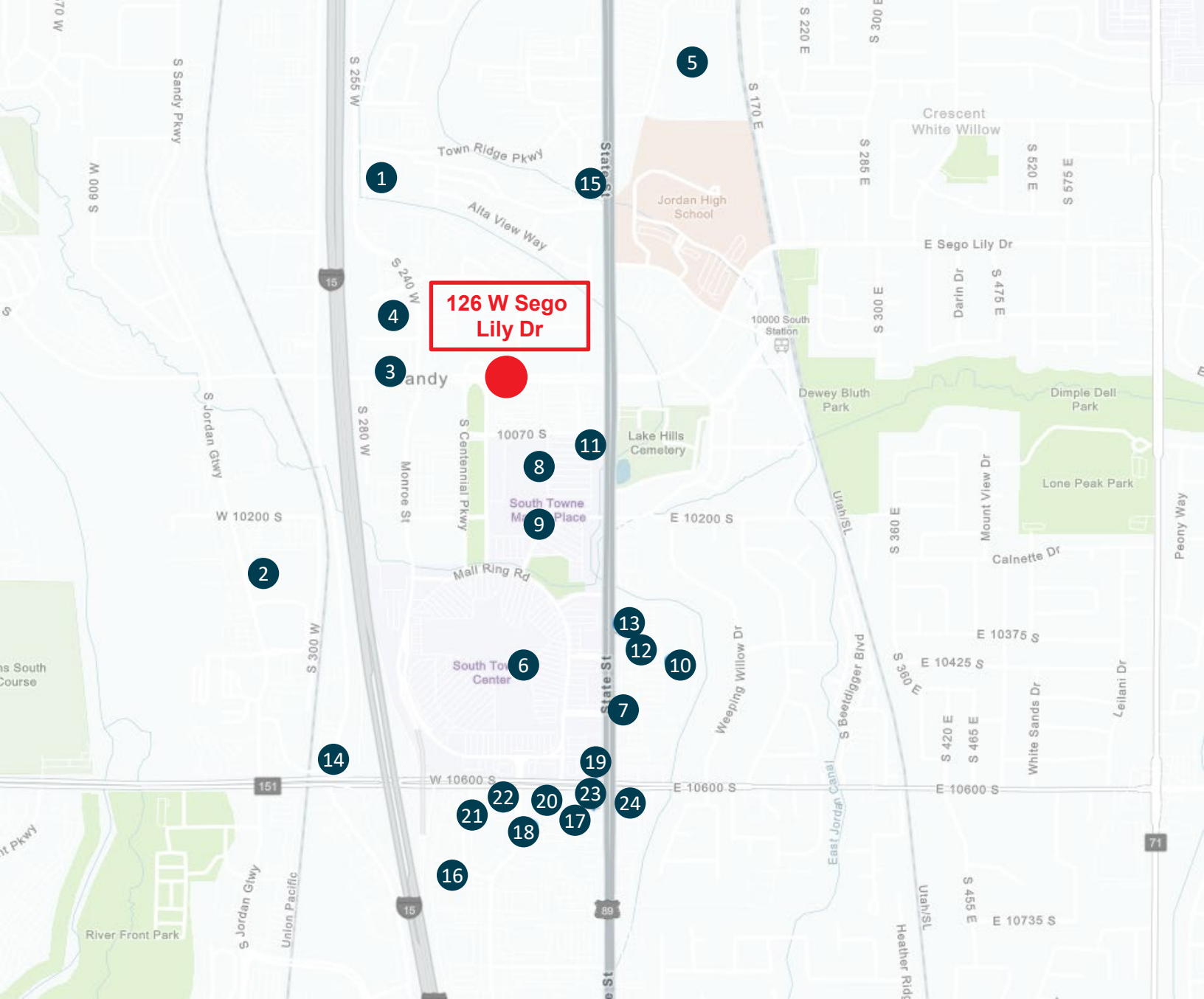


# Suite 265 - 2,689 SF



David Nixon  
+1 801 456 9518  
[David.nixon@jll.com](mailto:David.nixon@jll.com)

Krystle Farrall  
+1 801 456 9524  
[Krystle.farrall@jll.com](mailto:Krystle.farrall@jll.com)



## Nearby Amenities

- |                                 |                             |                           |
|---------------------------------|-----------------------------|---------------------------|
| 1. Hyatt House                  | 9. Old Navy                 | 17. Simply Thai           |
| 2. Embassy Suites               | 10. Ulta Beauty             | 18. Wendy's               |
| 3. Residence Inn                | 11. Chick-fil-A             | 19. El Pollo Loco         |
| 4. Hale Center Theatre          | 12. Libertango Steakhouse   | 20. Jamba                 |
| 5. Mountain America Expo Center | 13. Pei Wei Asian Kitchen   | 21. Legends Pub and Grill |
| 6. The Shops at South Towne     | 14. R&R BBQ                 | 22. Zions Bank            |
| 7. Men's Wearhouse              | 15. Crisp and Green         | 23. Chase Bank            |
| 8. Target                       | 16. Carvers Seafood & Steak | 24. US Bank               |

Although information has been obtained from sources deemed reliable, neither Owner nor JLL makes any guarantees, warranties or representations, express or implied, as to the completeness or accuracy as to the information contained herein. Any projections, opinions, assumptions or estimates used are for example only. There may be differences between projected and actual results, and those differences may be material. The Property may be withdrawn without notice. Neither Owner nor JLL accepts any liability for any loss or damage suffered by any party resulting from reliance on this information. If the recipient of this information has signed a confidentiality agreement regarding this matter, this information is subject to the terms of that agreement. ©2025 Jones Lang LaSalle IP, Inc. All rights reserved.