

For lease

Parkway Place 1 & 2
Jacksonville, FL 32216



Ross Crabtree
Managing Director
ross.crabtree@jll.com
+1 904 559 3915

Mack Keasler
Senior Associate
mack.keasler@jll.com
+1 904 559 3902

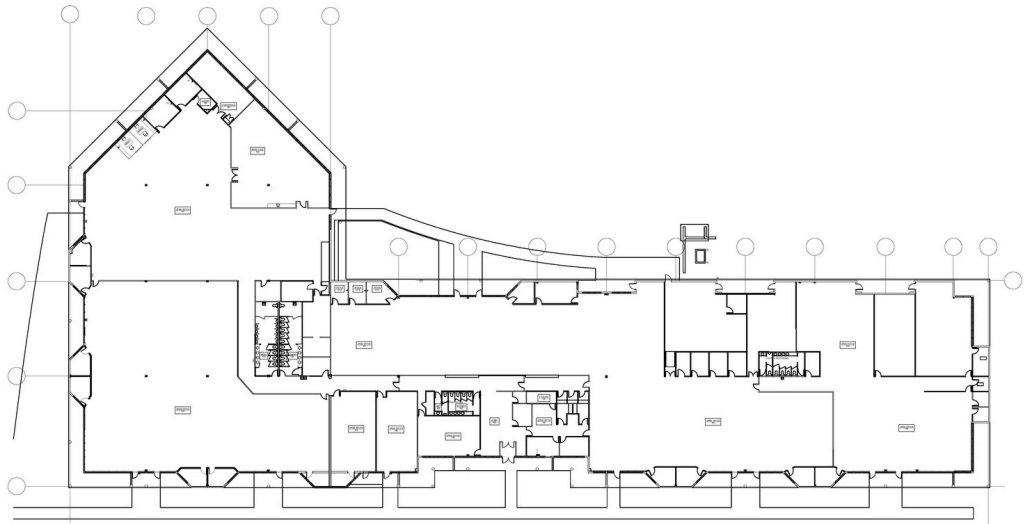
About Parkway Place

- Two single story buildings built in 1986
- Zoned IBP-2
- 7.0/1,000 s.f. parking ratio
- Convenient to I-95 and Butler Blvd.
- Easy access to Southpoint area amenities
- 13' clear height
- Grade level access

Parkway Place 1

6680 Southpoint Pkwy.

15,000 - 56,460 s.f. available



Parkway Place 2

6700 Southpoint Pkwy.

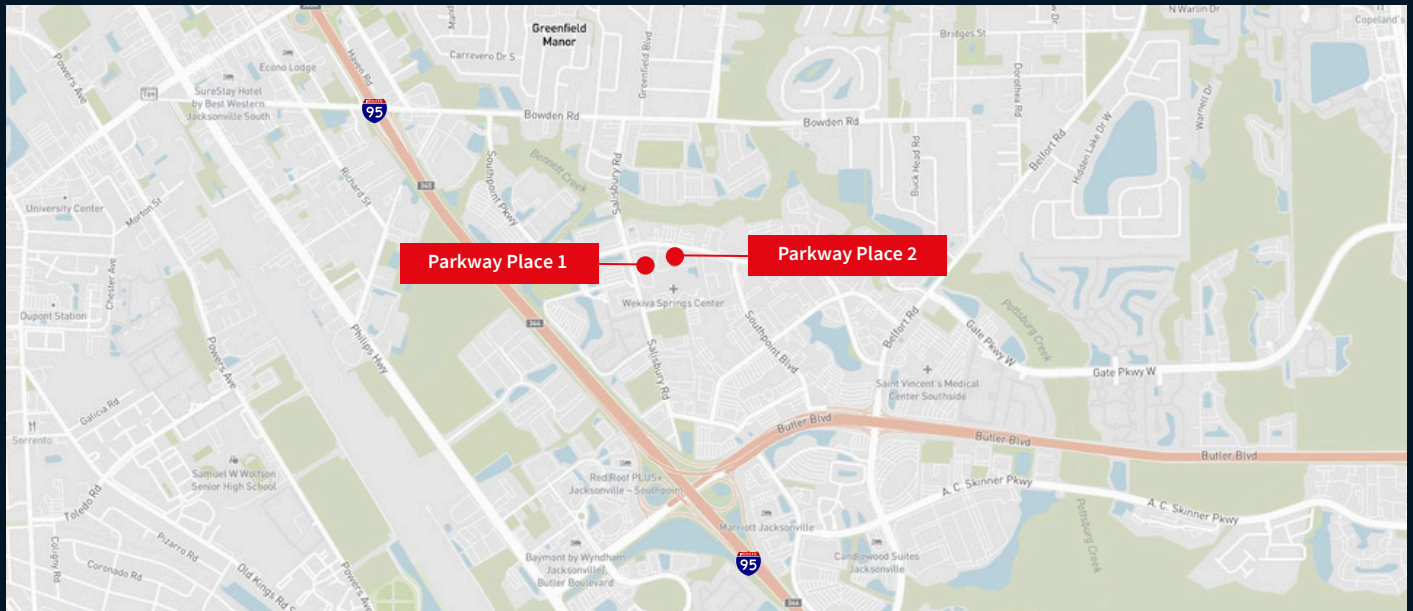
Ste. 500 - 11,491 s.f. available





Parkway Place

Convenient Southside location



- Centrally located at the intersection of I-95, US-1 and Butler Blvd.
- Part of Southpoint Business Park
- Frontage on Southpoint Pkwy.
- Quick access to all major roadways including Butler Blvd., US-1 and I-95
- Easy access to Southpoint area amenities

Ross Crabtree
Managing Director
ross.crabtree@jll.com
+1 904 559 3915

Mack Keasler
Senior Associate
mack.keasler@jll.com
+1 904 559 3902