

1400 - 1800 NW 2nd Street  
Grimes, IA 50011

# For Sale

## Property overview

Availability: 1.7-11.3 ac

Contiguous: 6.5 ac, 4.76 ac

Sale Price: \$7.00 - \$10.00 PSF

Zoning: Commercial

Commercial ground for sale in  
rapidly developing community

## 1.7-11.3 ac

- Close proximity to Dallas Center-Grimes schools, new residential developments, and the Hope District at Hy-Vee Multiplex .
- Capitalize on a growing affluent community, driving commercial demand.

**Contact broker for  
additional information**

[jll.com/des-moines](http://jll.com/des-moines)

**Nick Anderson**

Associate

[nicholas.anderson@jll.com](mailto:nicholas.anderson@jll.com)

+1 515 729 6015

**Meredith Hedstrom**

Vice President

[meredith.hedstrom@jll.com](mailto:meredith.hedstrom@jll.com)

+1 515 419 2963

**Aaron Hyde**

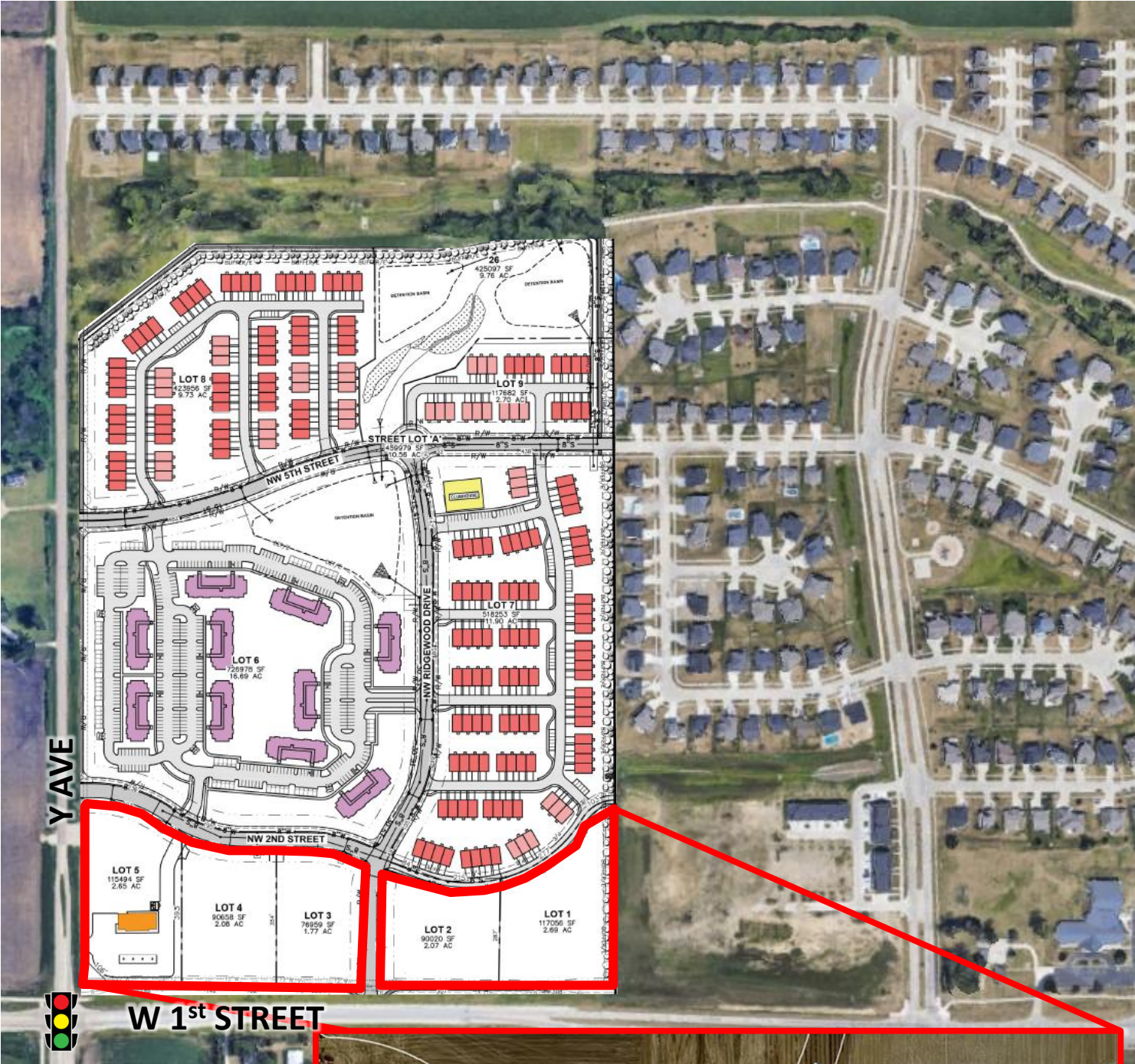
Senior Vice President

[aaron.hyde@jll.com](mailto:aaron.hyde@jll.com)

+1 515 953 8834



# Site Plan & Pricing





# 1400 - 1800 NW 2nd Street

Grimes, Iowa 50011



## Demographics

### Radius of the Property

	1-mile	3-miles	5-miles
Population	3,307	24,567	64,910
Daytime Population	2,320	19,185	58,584
Households	1,169	8,977	23,329
Household Income	\$126,262	\$118,155	\$134,483

**Contact broker for  
additional information**

[jll.com/des-moines](http://jll.com/des-moines)

**Nick Anderson**

Associate

[nicholas.anderson@jll.com](mailto:nicholas.anderson@jll.com)

+1 515 729 6015

**Meredith Hedstrom**

Vice President

[meredith.hedstrom@jll.com](mailto:meredith.hedstrom@jll.com)

+1 515 419 2963

**Aaron Hyde**

Senior Vice President

[aaron.hyde@jll.com](mailto:aaron.hyde@jll.com)

+1 515 953 8834