

85 SECOND



Matthew Shewey

Senior Managing Director
RE License #01445125
+1 415 395 7255
matt.shewey@jll.com

Charlie Hanafin

Senior Vice President
RE License #01996121
+1 415 395 4951
charlie.hanafin@jll.com



Jones Lang LaSalle Brokerage, Inc.
Real Estate License #: 01856260

History



85 Second Street was originally built in 1897 for Wells Fargo & Co. by famous architects Percy & Hamilton and withstood the 1906 earthquake and fires. The building was rehabilitated in 1908, with an additional floor added under the direction of architects Meyers & Ward and has since been seismically retrofitted.

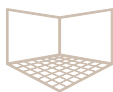
85 Second Street also housed the Supreme Court of California from 1908 to 1923 before relocating to its' current location of 350 McAllister Street.

This historic property is located in the heart of San Francisco's vibrant South of Market district, adjacent to some of the Bay Area's top technology companies and amenities.

Building Amenities



Open, creative
space



Large, efficient
floorplates



Bike
storage



Parking
on-site

location



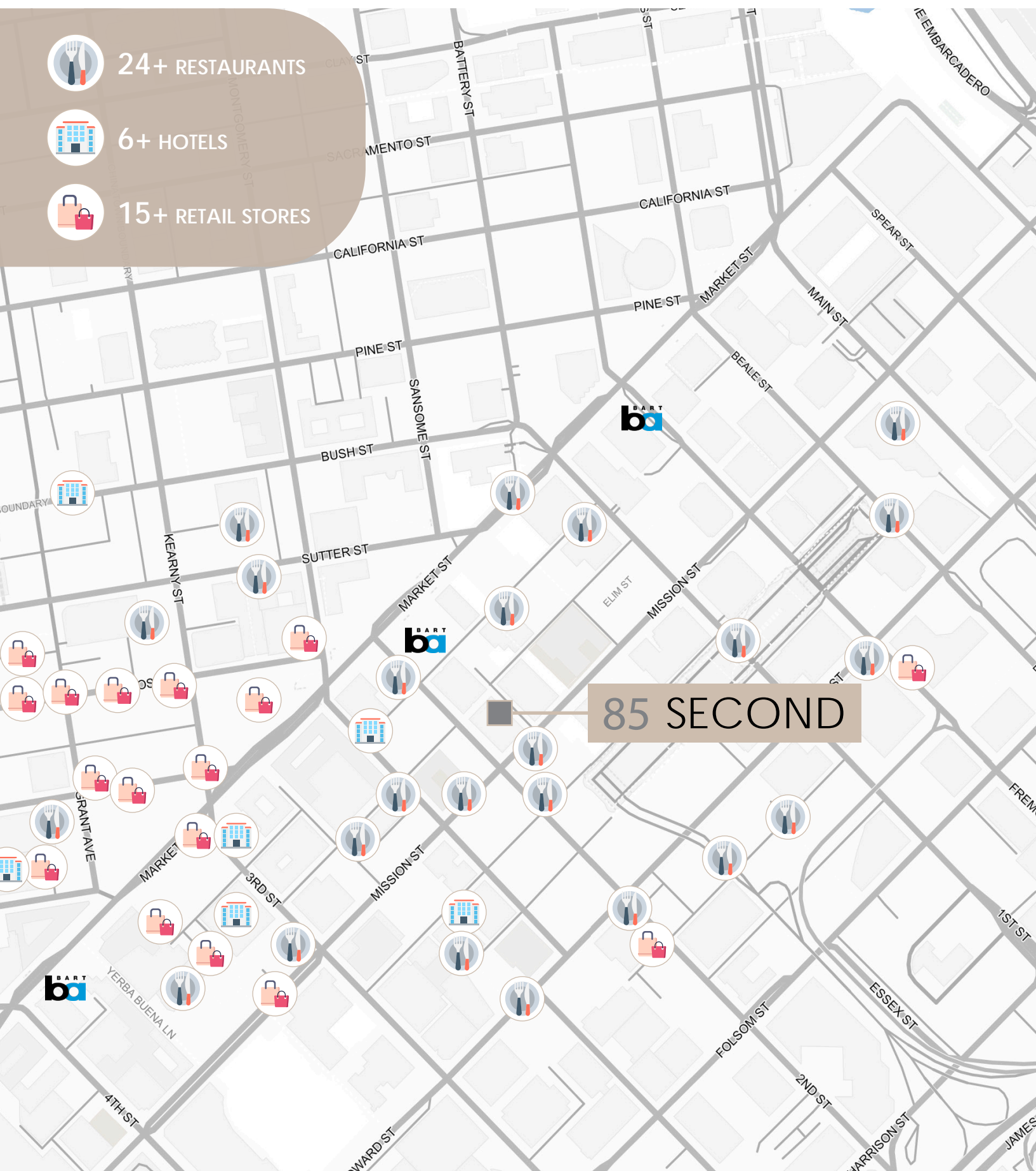
24+ RESTAURANTS



6+ HOTELS



15+ RETAIL STORES



Stack Plan

Large Block Opportunity



Floor plan



Suite 100 | 8,273 RSF



Available 12/1/2025



Highly creative space



Vast ceiling heights



All gender restroom



Large all-hands kitchen area



2 large & 4 medium meeting rooms



ADA shower

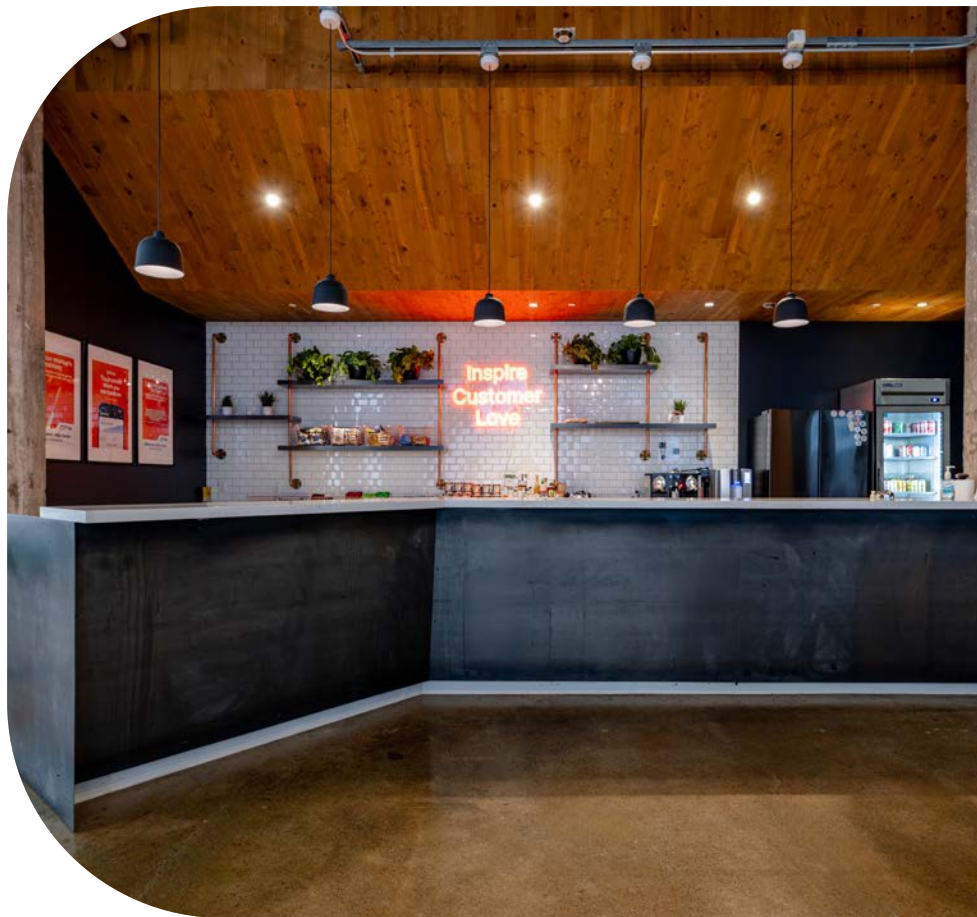
Matthew Shewey
Senior Managing Director
RE License #01445125
+1 415 395 7255
matt.shewey@jll.com

Charlie Hanafin
Senior Vice President
RE License #01996121
+1 415 395 4951
charlie.hanafin@jll.com

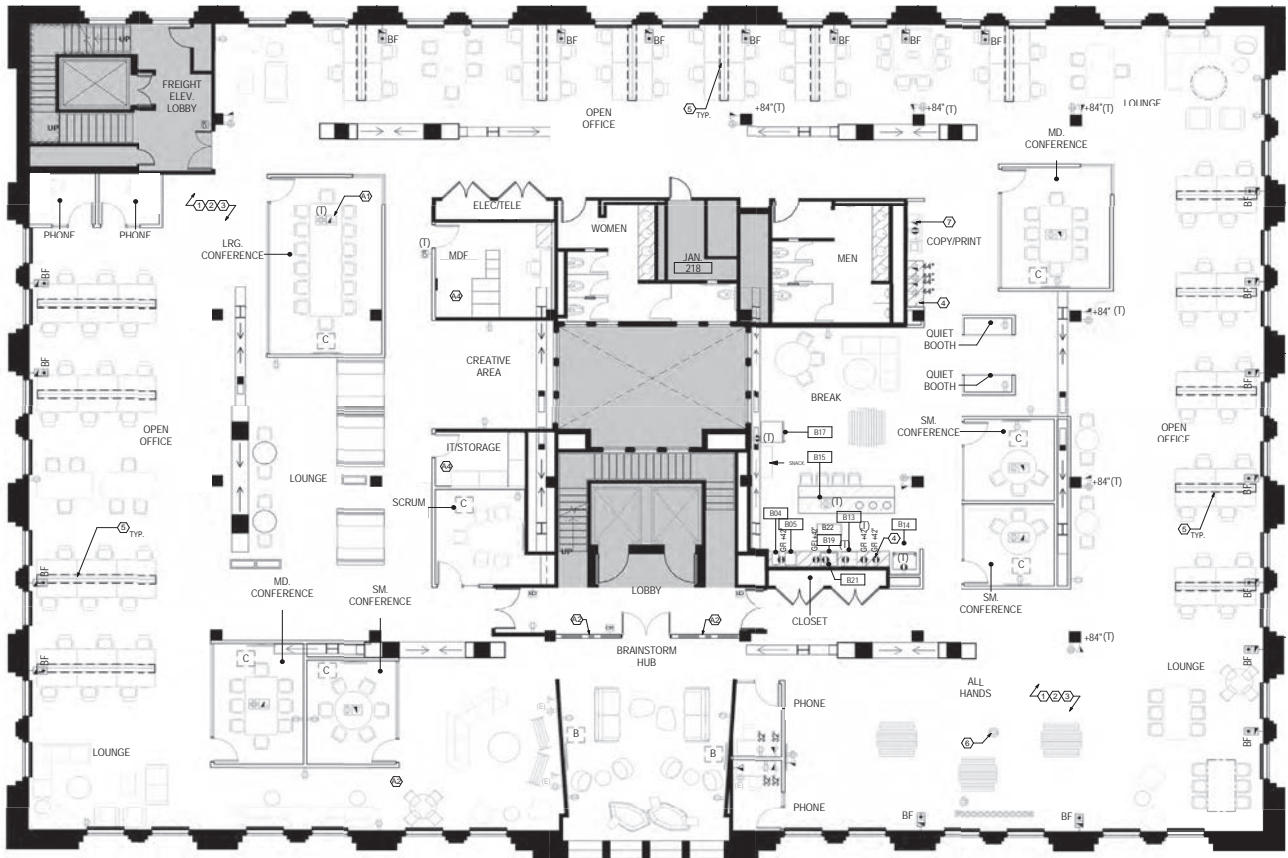


Jones Lang LaSalle Brokerage, Inc.
Real Estate License #: 01856260

gallery



Floor plan



Suite 200 | 17,279 RSF



Available 12/1/2025



Highly creative space



Vast ceiling heights



4 phone rooms



Large open kitchen



6 medium conference rooms



1 boardroom

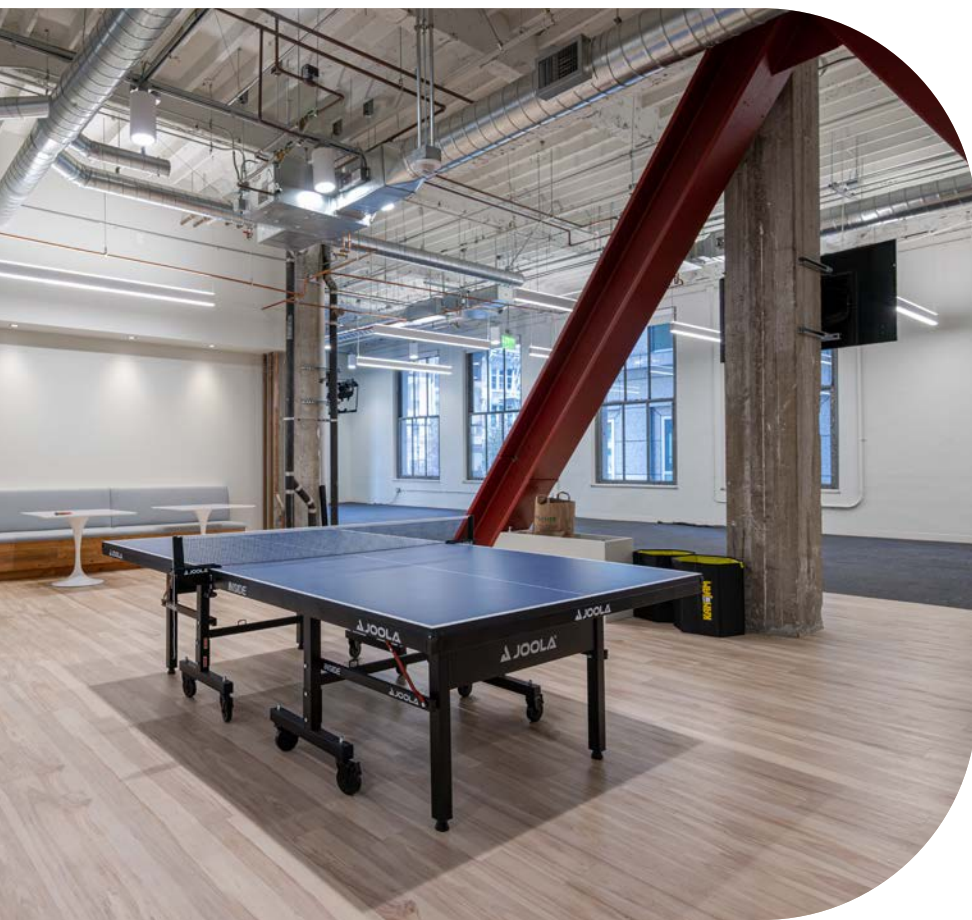
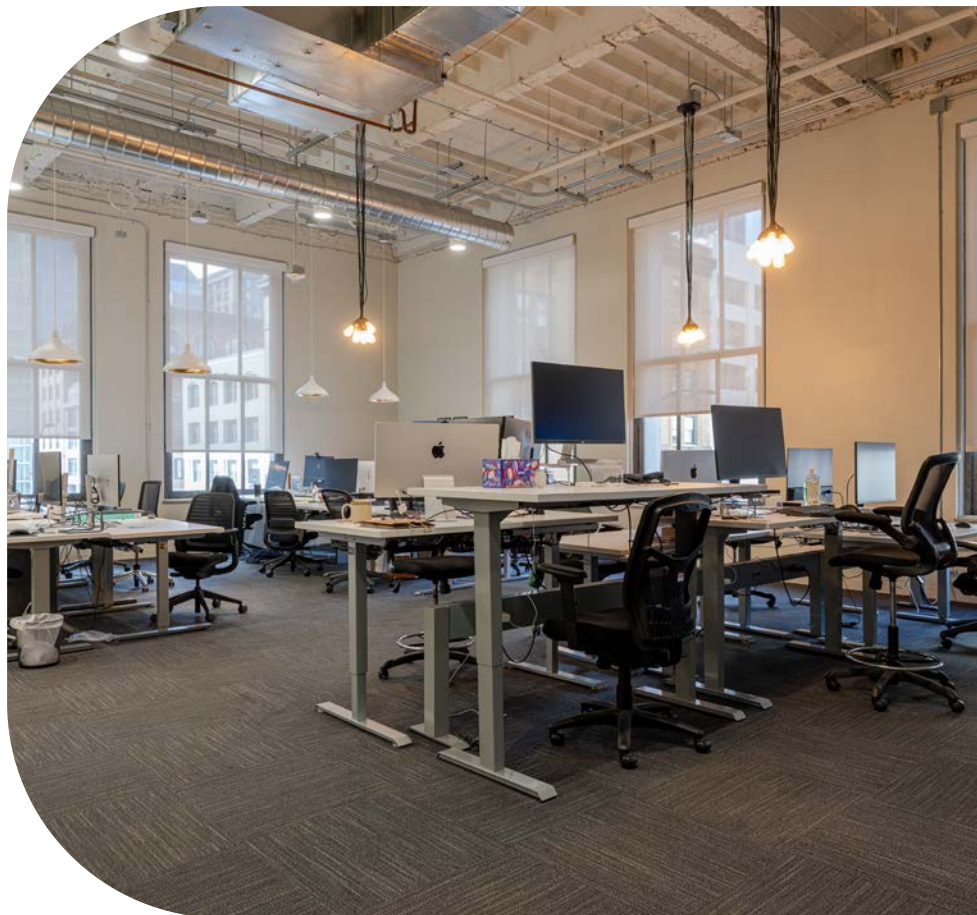
Matthew Shewey
Senior Managing Director
RE License #01445125
+1 415 395 7255
matt.shewey@jll.com

Charlie Hanafin
Senior Vice President
RE License #01996121
+1 415 395 4951
charlie.hanafin@jll.com

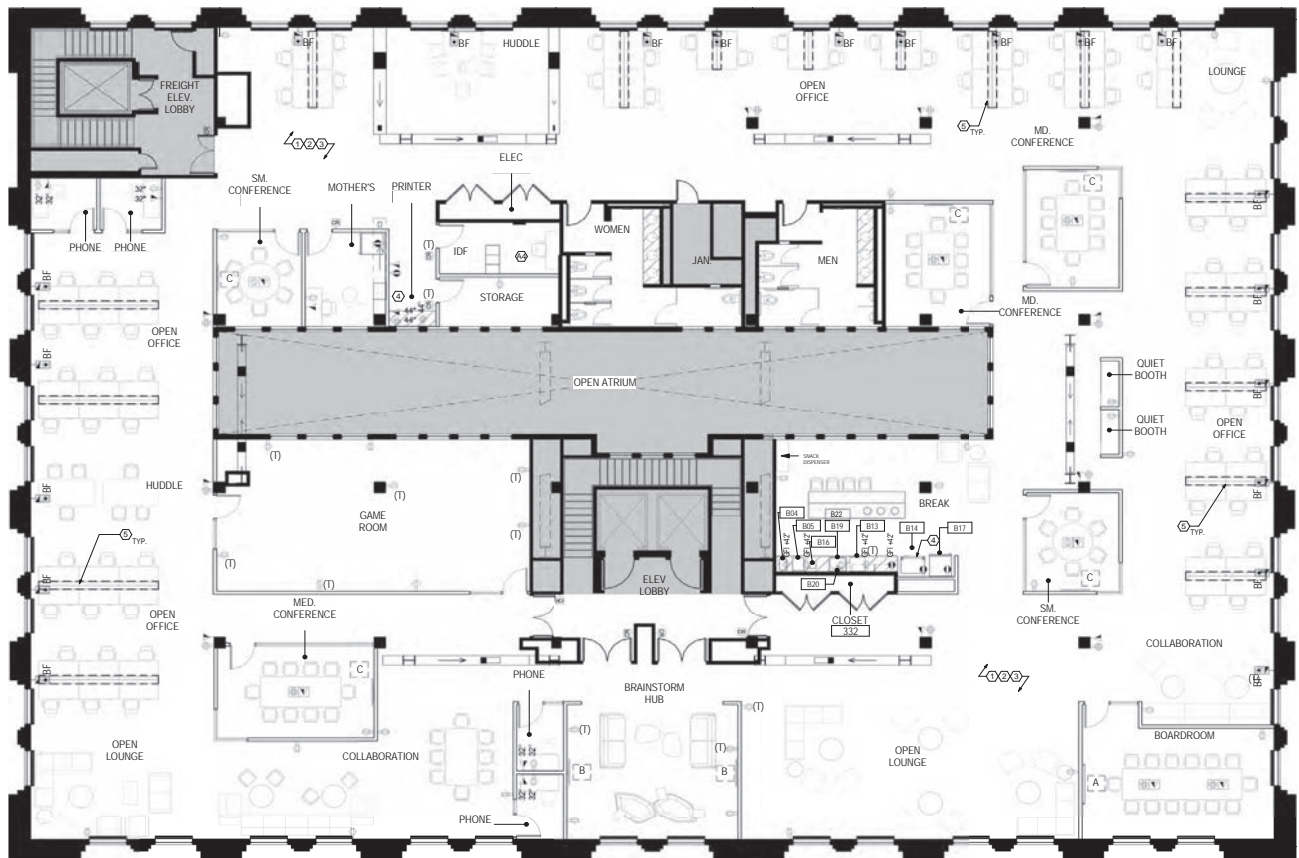


Jones Lang LaSalle Brokerage, Inc.
Real Estate License #: 01856260

gallery



Floor plan



Suite 300 | 16,147 RSF



Available 12/1/2025



Highly creative space



Vast ceiling heights



4 phone rooms



Large open kitchen



5 medium conference rooms



1 boardroom



Mother's room

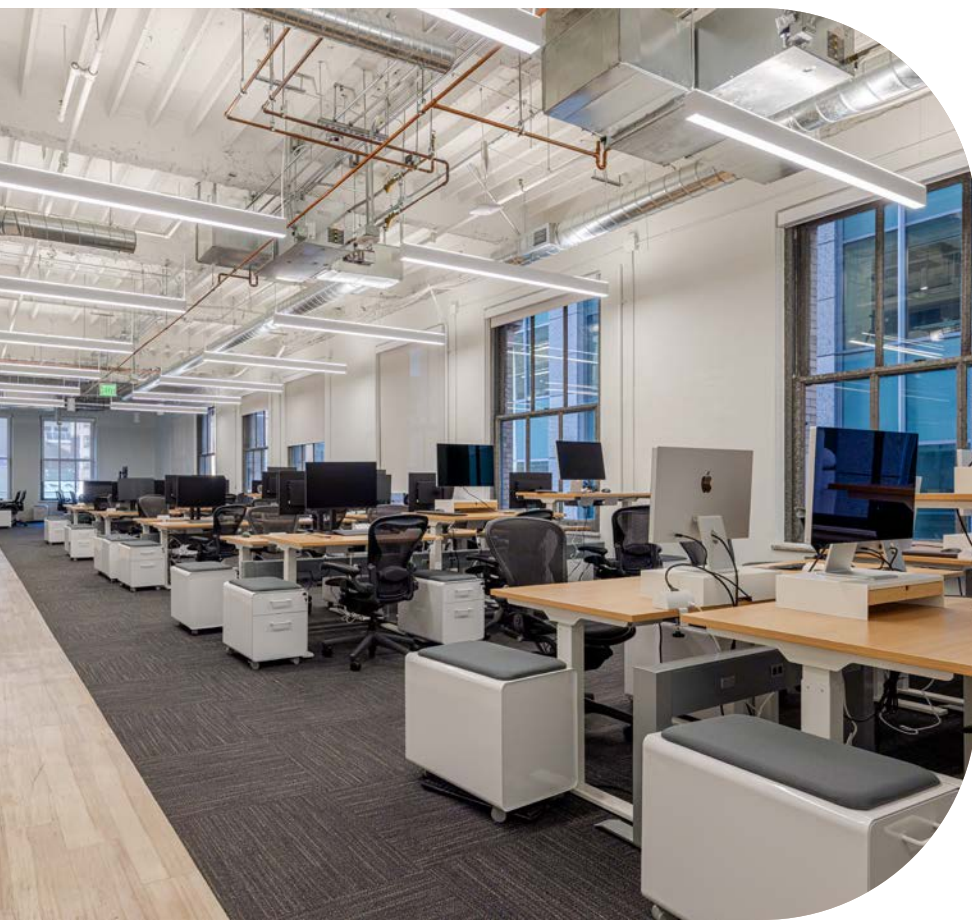
Matthew Shewey
Senior Managing Director
RE License #01445125
+1 415 395 7255
matt.shewey@jll.com

Charlie Hanafin
Senior Vice President
RE License #01996121
+1 415 395 4951
charlie.hanafin@jll.com

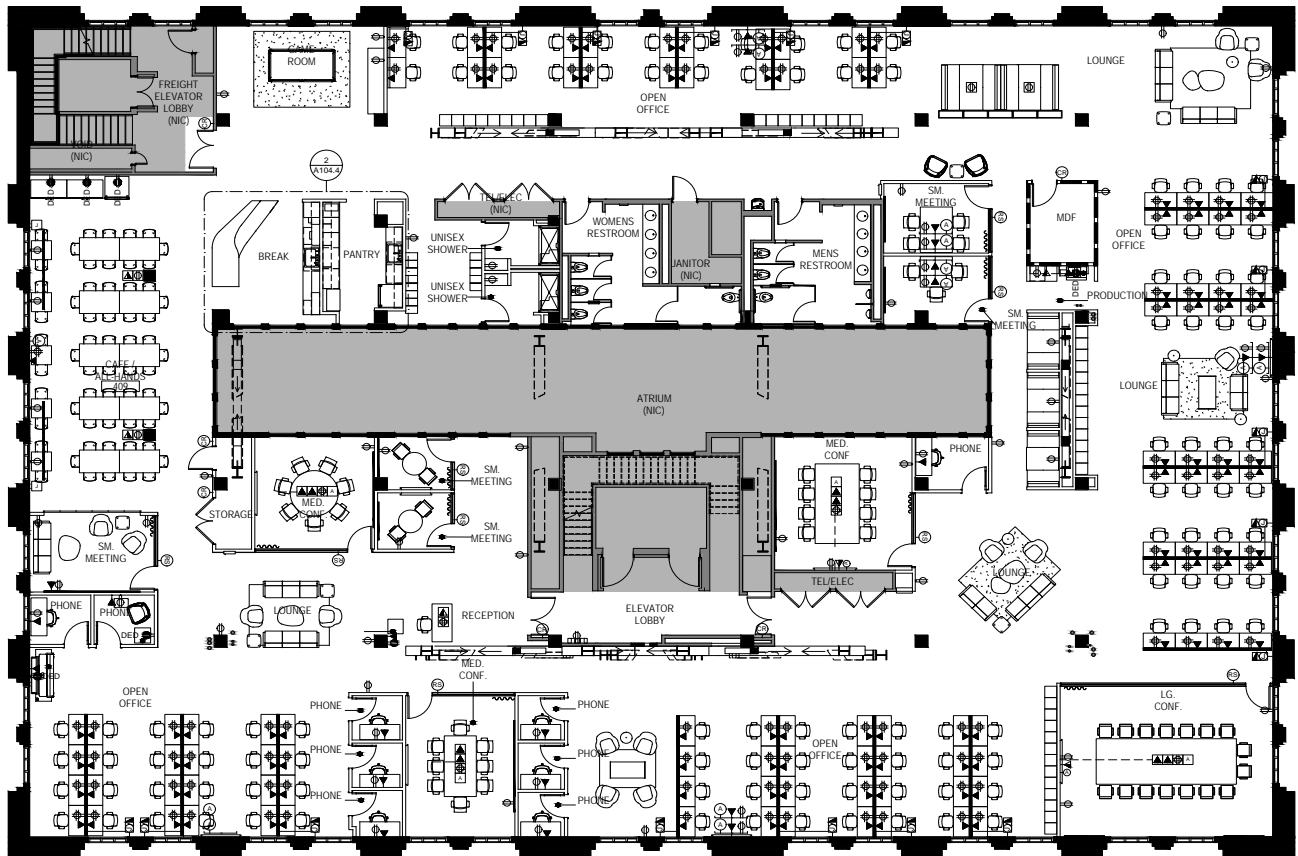


Jones Lang LaSalle Brokerage, Inc.
Real Estate License #: 01856260

gallery



Floor plan



Suite 400 | 16,111 RSF



Available 9/1/2026



Highly creative space



Vast ceiling heights



2 small meeting rooms



2 showers



Large open kitchen



6 medium conference rooms



1 boardroom



9 phone rooms

Matthew Shewey
Senior Managing Director
RE License #01445125
+1 415 395 7255
matt.shewey@jll.com

Charlie Hanafin
Senior Vice President
RE License #01996121
+1 415 395 4951
charlie.hanafin@jll.com

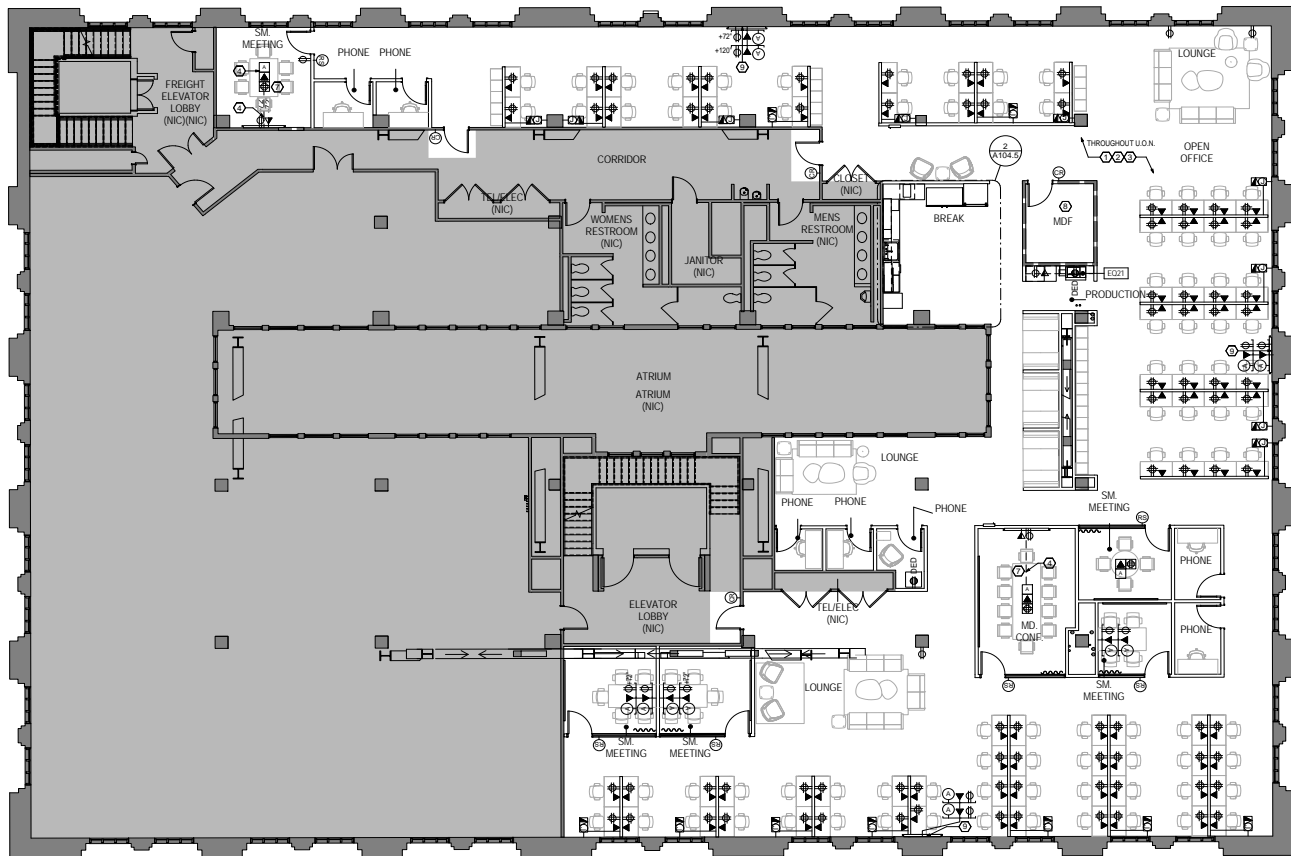


Jones Lang LaSalle Brokerage, Inc.
Real Estate License #: 01856260

gallery



Floor plan



Suite 500 | 9,736 RSF



Available 9/1/2026



Highly creative space



Vast ceiling heights



7 phone rooms



Open kitchen



5 medium conference rooms



1 large conference room

Matthew Shewey

Senior Managing Director
RE License #01445125
+1 415 395 7255
matt.shewey@jll.com

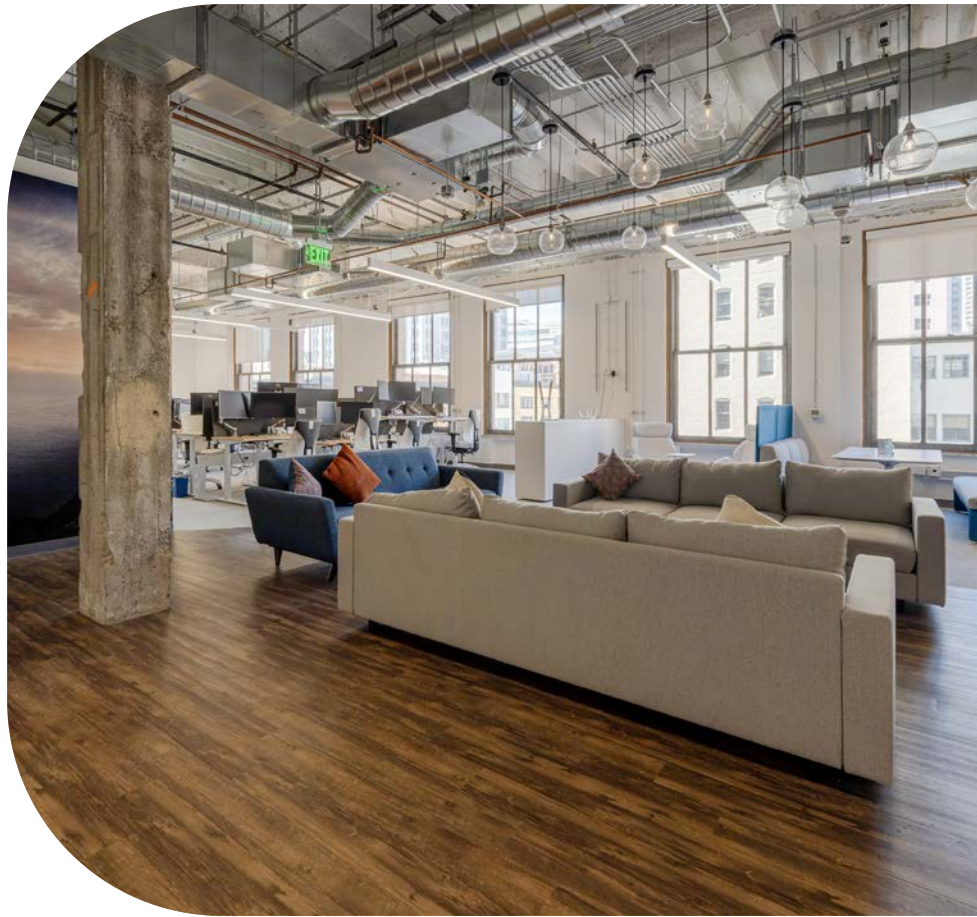
Charlie Hanafin

Senior Vice President
RE License #01996121
+1 415 395 4951
charlie.hanafin@jll.com

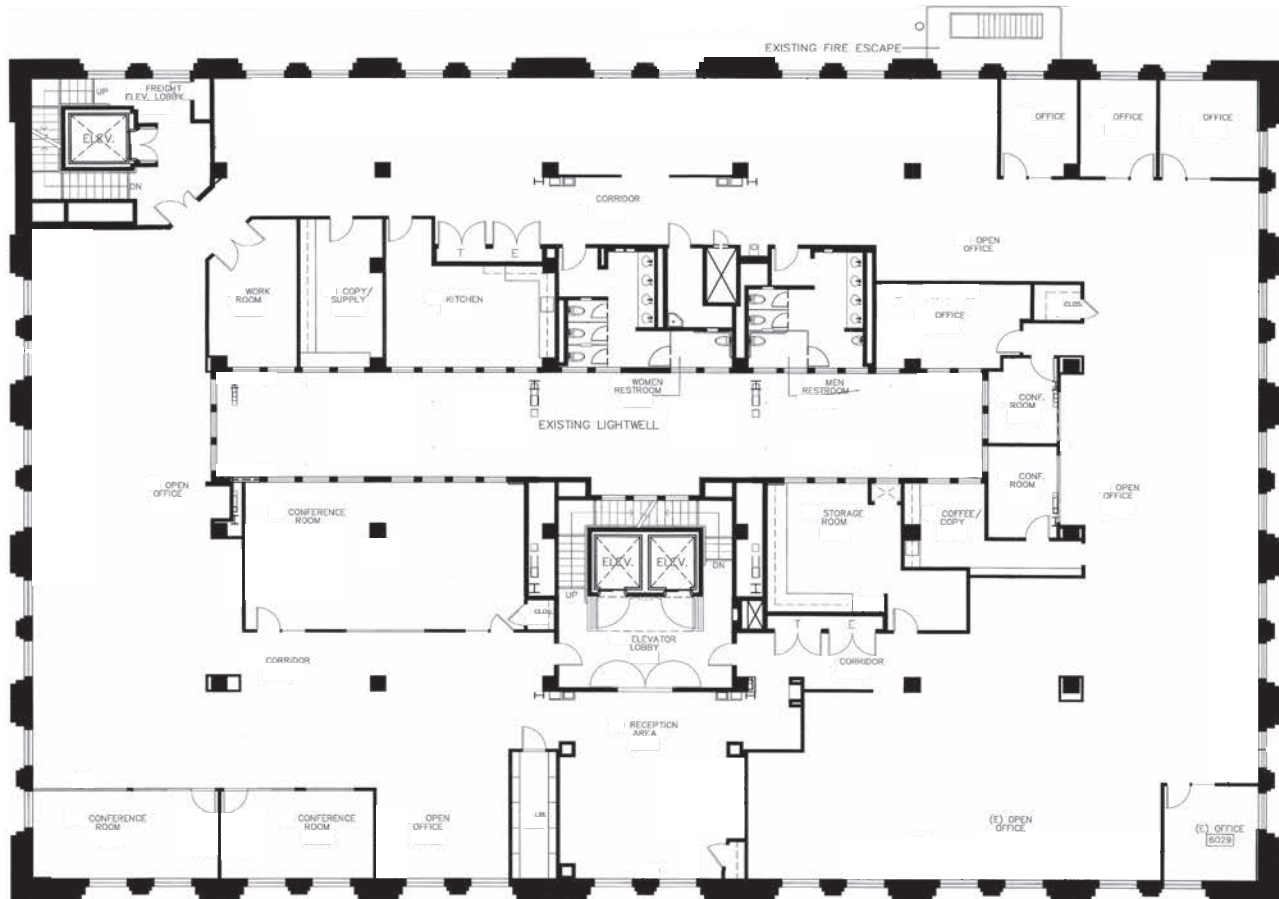


Jones Lang LaSalle Brokerage, Inc.
Real Estate License #: 01856260

gallery



Floor plan



Suite 600 | 16,117 RSF



Available 9/1/2026



Large kitchen/break room



4 large conference rooms



6 medium conference rooms



Dropped ceiling



1 boardroom

Matthew Shewey
Senior Managing Director
RE License #01445125
+1 415 395 7255
matt.shewey@jll.com

Charlie Hanafin
Senior Vice President
RE License #01996121
+1 415 395 4951
charlie.hanafin@jll.com

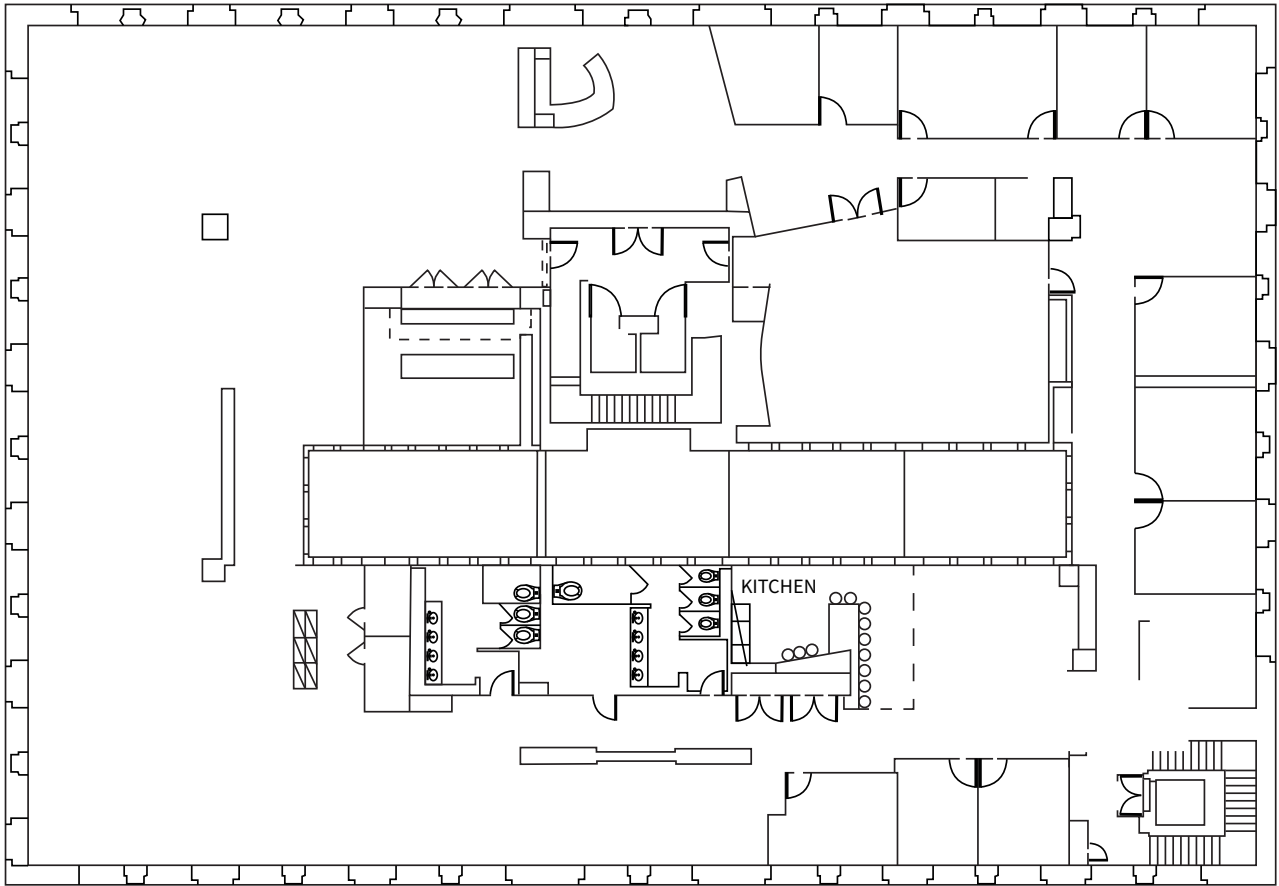


Jones Lang LaSalle Brokerage, Inc.
Real Estate License #: 01856260

gallery



Floor plan



Suite 800 | 16,886 RSF



Available now



Kitchen/Break area



Vast 18-foot ceiling heights



10 Offices/Meeting rooms
Two phone rooms



Open, creative plan



One Boardroom/All-hands

Matthew Shewey

Senior Managing Director
RE License #01445125
+1 415 395 7255
matt.shewey@jll.com

Charlie Hanafin

Senior Vice President
RE License #01996121
+1 415 395 4951
charlie.hanafin@jll.com



Jones Lang LaSalle Brokerage, Inc.
Real Estate License #: 01856260

85 SECOND



Matthew Shewey

Senior Managing Director
RE License #01445125
+1 415 395 7255
matt.shewey@jll.com

Charlie Hanafin

Senior Vice President
RE License #01996121
+1 415 395 4951
charlie.hanafin@jll.com



Although information has been obtained from sources deemed reliable, JLL does not make any guarantees, warranties or representations, express or implied, as to the completeness or accuracy as to the information contained herein. Any projections, opinions, assumptions or estimates used are for example only. There may be differences between projected and actual results, and those differences may be material. JLL does not accept any liability for any loss or damage suffered by any party resulting from reliance on this information. If the recipient of this information has signed a confidentiality agreement with JLL regarding this matter, this information is subject to the terms of that agreement. ©2025 Jones Lang LaSalle Brokerage, Inc. All rights reserved.