



# For lease

1201 N 50th St., Tampa, FL 33610

± 1.50 acres of industrial outdoor storage

 **JLL** SEE A BRIGHTER WAY



1201 N 50th St., Tampa, FL

# Highlights

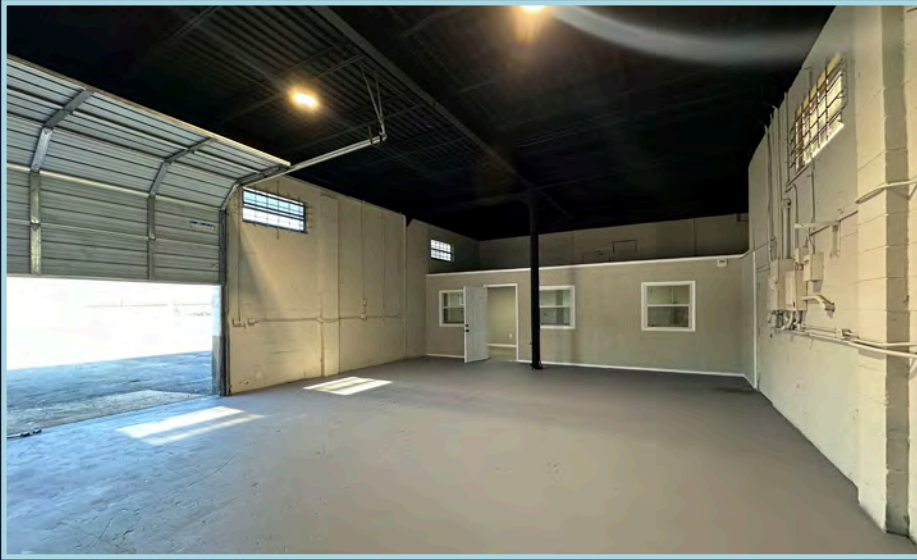
Available	October 1, 2025
Pricing	\$10,000/mo. Gross
Acres	± 1.50
Warehouse SF	± 1,600 total
Office SF	± 150
Zoning	IH - Industrial Heavy
Grade level doors	One (1)
Warehouse clear height	18'
Site features	<ul style="list-style-type: none"><li>- Full fenced, paved, and lit</li><li>- Two (2) access points</li><li>- Newly renovated office pod</li><li>- Small warehouse</li><li>- Bathroom in warehouse</li><li>- Prime visibility on 50th St</li></ul>





1201 N 50th St., Tampa, FL

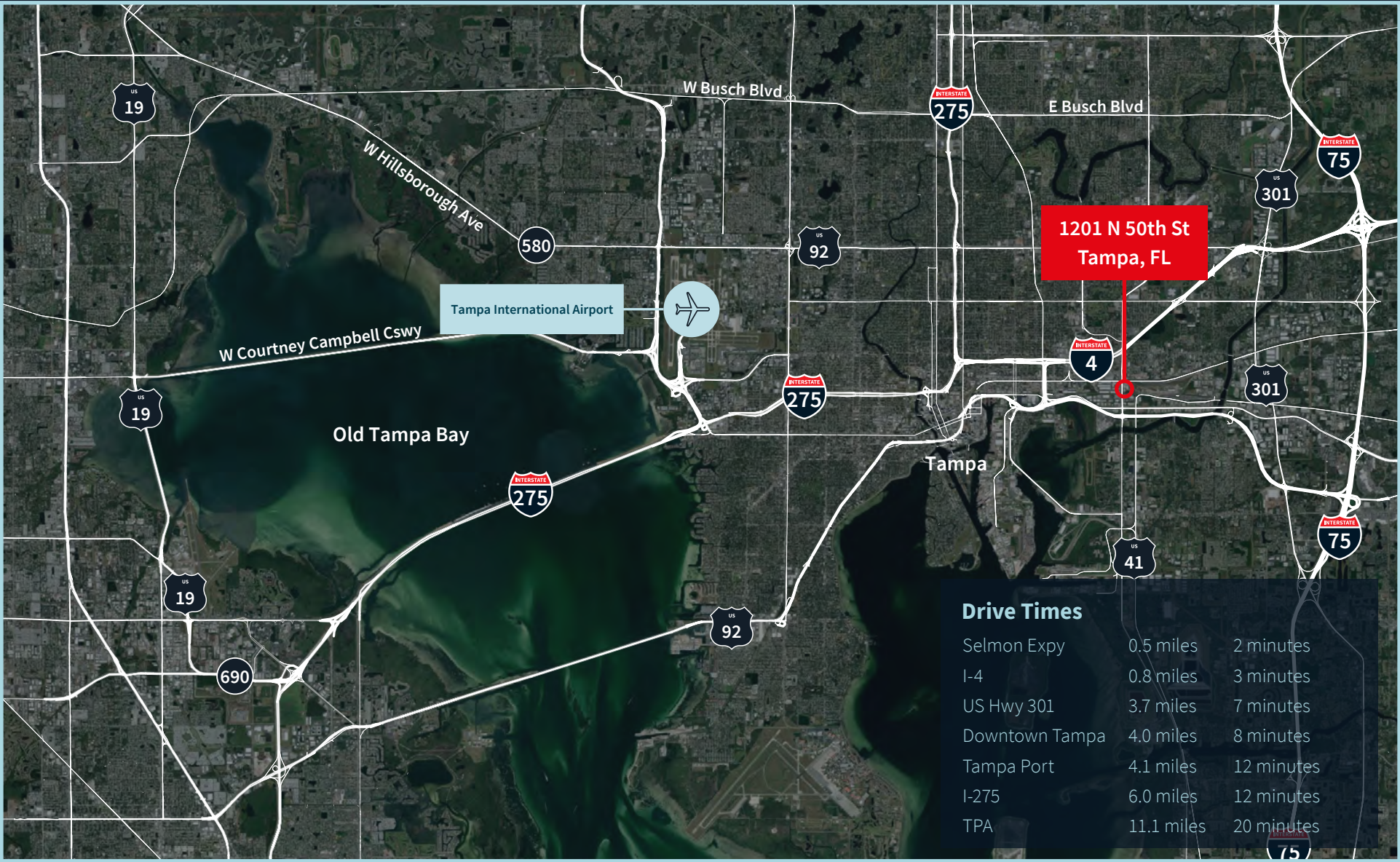
## Photos





1201 N 50th St., Tampa, FL

# Access Map



**Contact:****Harrison Pithers***Associate*

+1 813 610 0239

harrison.pithers@jll.com

**Pete Cecora, SIOR***Executive Managing Director*

+1 813 387 1297

peter.cecora@jll.com