



# For lease

## Bryan Dairy East Building 4

7300 Bryan Dairy Rd  
Largo, FL 33777

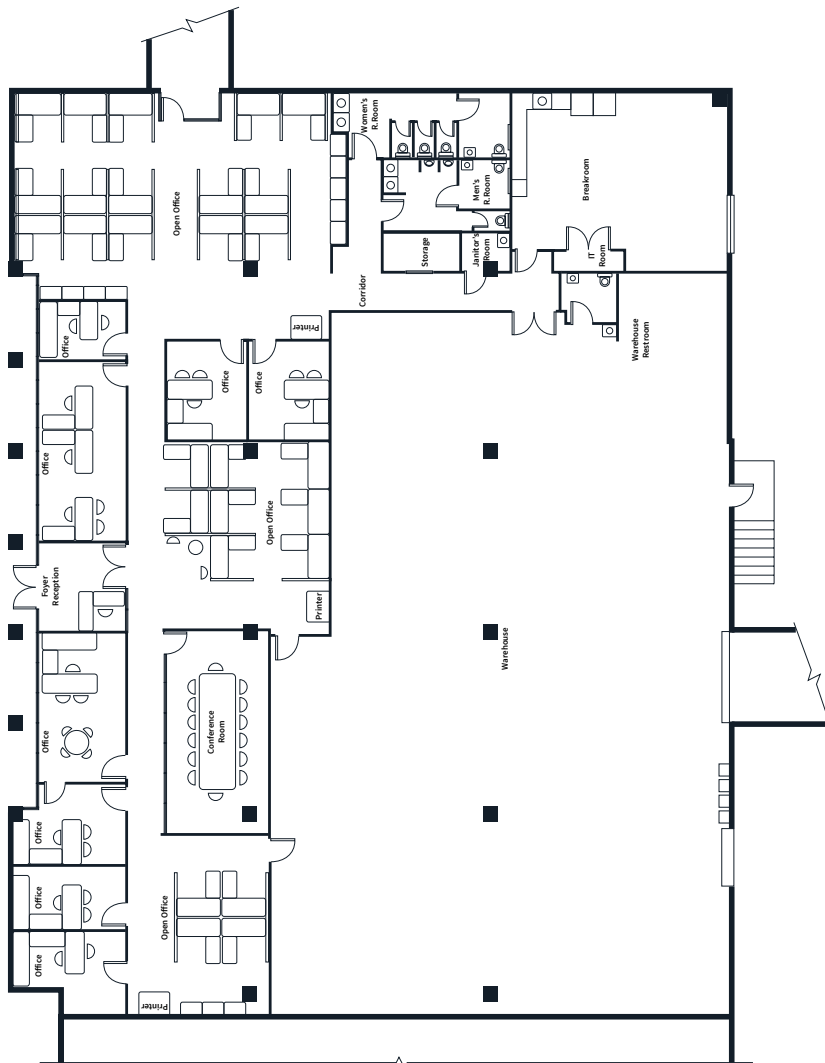
### Property Highlights

- Class A industrial business park
- Mid-Pinellas County with frontage on Bryan Dairy Road
- Tilt-wall construction
- Sprinklered
- 100% air-conditioned
- 3-phase power

**Class A Industrial Pinellas County**

**Bryan Dairy East  
Building 4  
7300 Bryan Dairy Road**

Total SF: 12,500



### Space Highlights

- Sprinklers: Wet
- Lights: LED
- Loading: One (1) dock-high door, one (1) drive-in door
- Building depth: 100'
- Power: 3-phase
- Multiple open office space areas, eight (8) private offices, conference room, breakroom, men's and women's restrooms in office area, warehouse restroom
- Frontage on Bryan Dairy Rd.



# Bryan Dairy East

## 2025 Demographics

### Population

42,405	264,840	719,144
2 miles	5 miles	10 miles

### Households

18,080	120,575	337,605
2 miles	5 miles	10 miles

### Avg. household income

\$105,183	\$91,731	\$103,006
2 miles	5 miles	10 miles

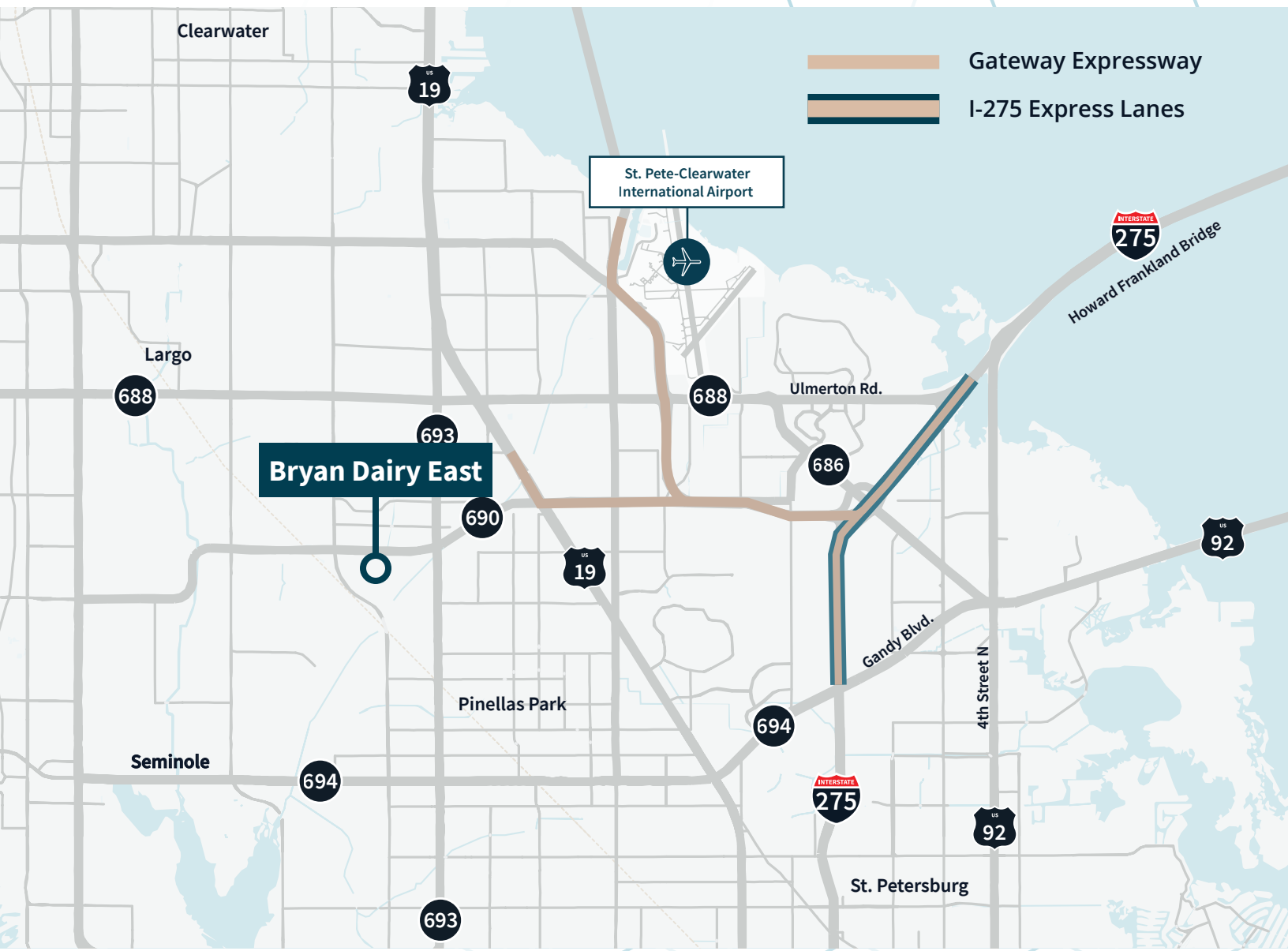
### Daytime employees

30,172	166,759	410,389
2 miles	5 miles	10 miles

### Daytime businesses

2,479	13,725	38,287
2 miles	5 miles	10 miles





**John Dunphy, CCIM, SIOR**  
Executive Managing Director  
johnc.dunphy@jll.com  
+1 813 387 1312

**Harrison Pithers**  
Associate  
harrison.pithers@jll.com  
+1 813 610 0239

jll.com

Jones Lang LaSalle Americas

Although information has been obtained from sources deemed reliable, JLL does not make any guarantees, warranties or representations, express or implied, as to the completeness or accuracy as to the information contained herein. Any projections, opinions, assumptions or estimates used are for example only. There may be differences between projected and actual results, and those differences may be material. JLL does not accept any liability for any loss or damage suffered by any party resulting from reliance on this information. If the recipient of this information has signed a confidentiality agreement with JLL regarding this matter, this information is subject to the terms of that agreement. ©2025 Jones Lang LaSalle Brokerage, Inc. All rights reserved.