

575 Lexington Avenue

Midtown East Retail Sublease Opportunity



Location

Northeast corner
of East 51st Street

Size

Ground Floor: 10,598 sf
Lower Level: 3,476 sf
(non-selling)
Mezzanine: 364 sf
(non-selling)
Total: 14,438 sf

Frontage

Approx. 120' wraparound

Site Status

Former Duane Reade
store #14488

Sublease Term

1/31/2027

Rent

Available upon request

Neighboring Co-Tenants

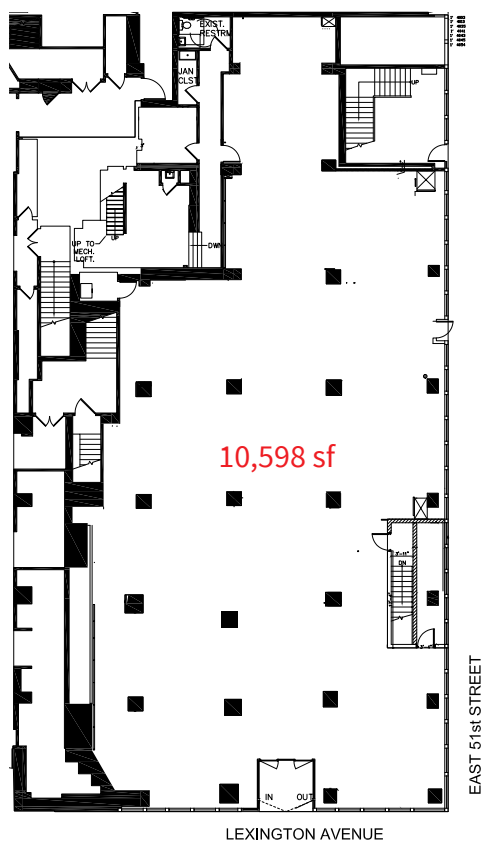
- Urban Space
- Paris Baguette
- Devoción
- CVS
- Starbucks
- Sugarfish

Features

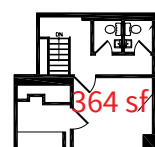
- Corner retail opportunity located at the base of a premier 35-story, 745,487 SF Class-A office building
- Adjacent to the E, M, and 6 subway station entrance, located at Lexington and 51st Street
- Surrounded by high-density commercial and hotel properties
- Close proximity to Grand Central Terminal



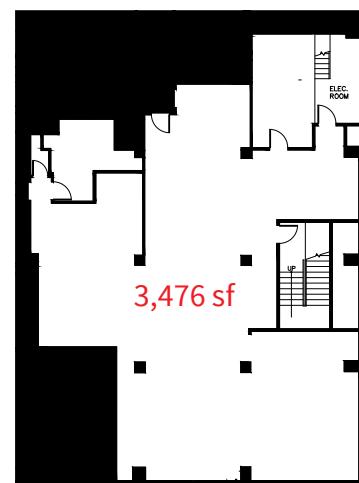
Ground Floor



Mezzanine



Lower Level



Floor plans not to scale