




For Lease

Deep Run III | 9954 Mayland Drive, Richmond, VA 23233

 **JLL** SEE A BRIGHTER WAY

Deep Run III

9954 Mayland Drive, Richmond, VA

Building Features

- 1,719 - 24,916 SF of class A office space immediately available
- State-of-the-art fitness center with locker rooms and showers
- Building cafe serving breakfast and lunch
- Large conference center
- Outdoor patio areas and green space.
- 5/1,000 SF of parking ratio
- On-site security
- Immediate access to I-64 at Gaskins Road interchange



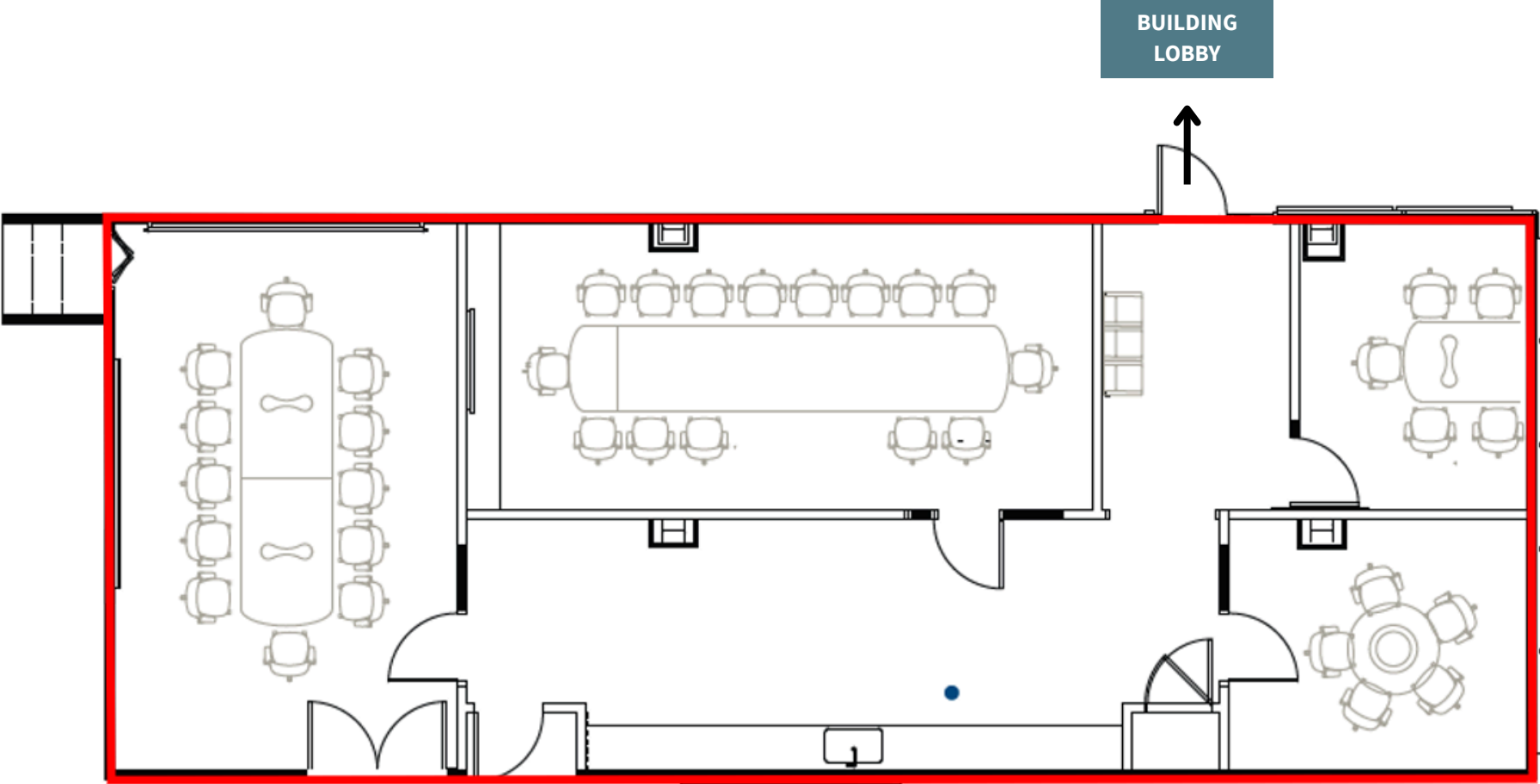
FLOORPLAN

SUITE 1100 | 5,764 SF



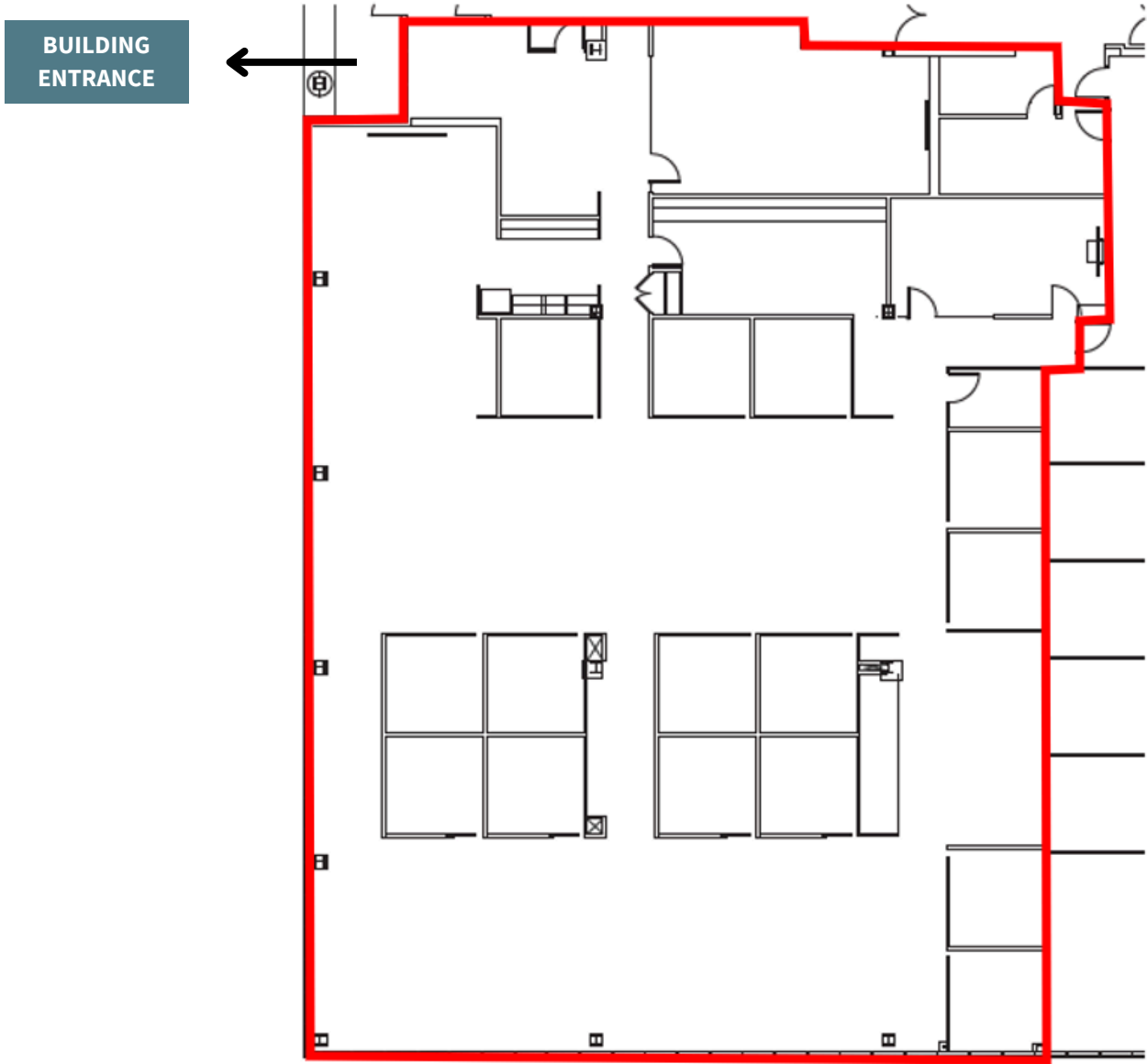
FLOORPLAN

SUITE 2600 | 1,719 SF



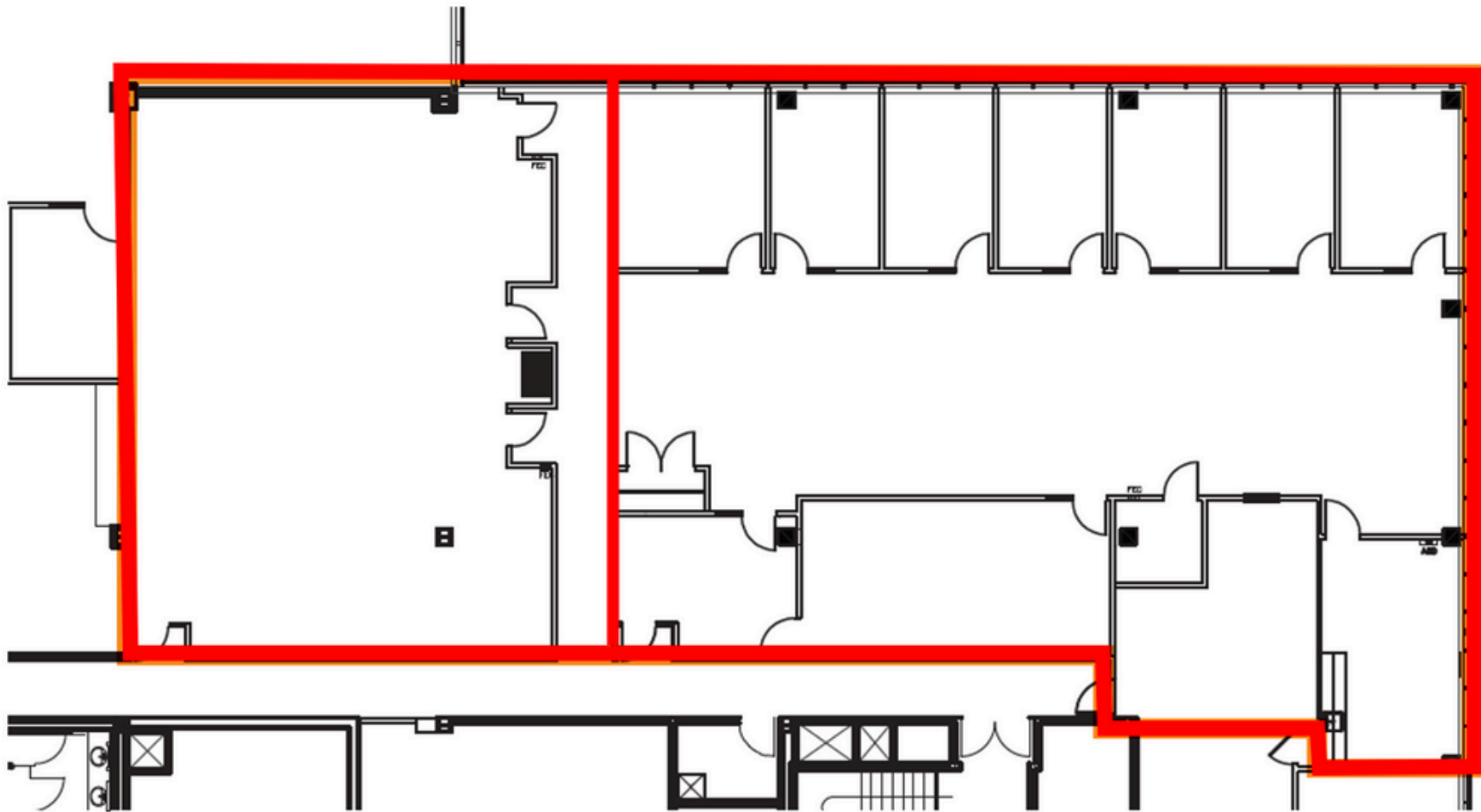
FLOORPLAN

SUITE 2400 | 9,071 SF



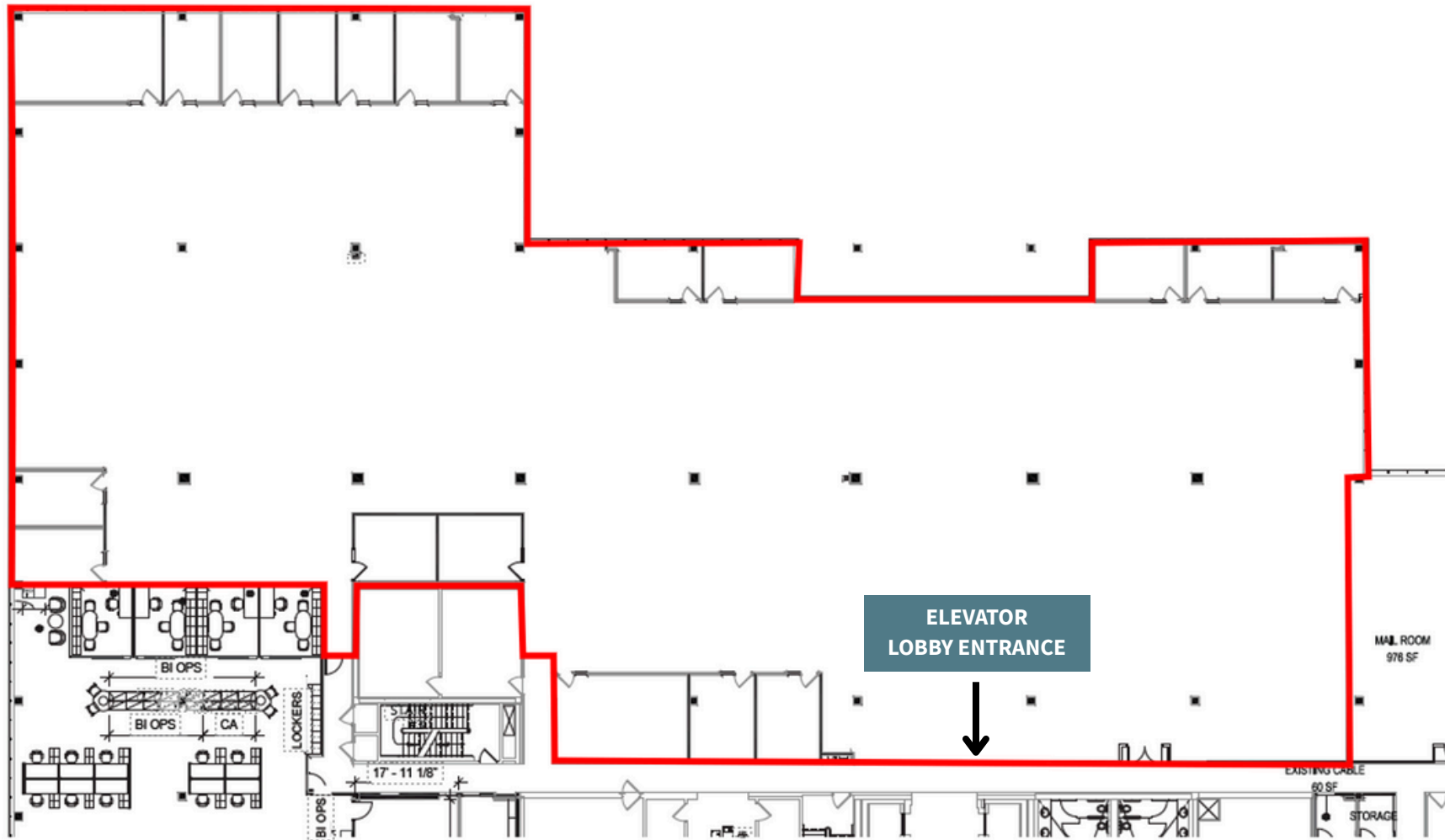
FLOORPLAN

SUITE 5400 | 2,460 SF - 6,922 SF

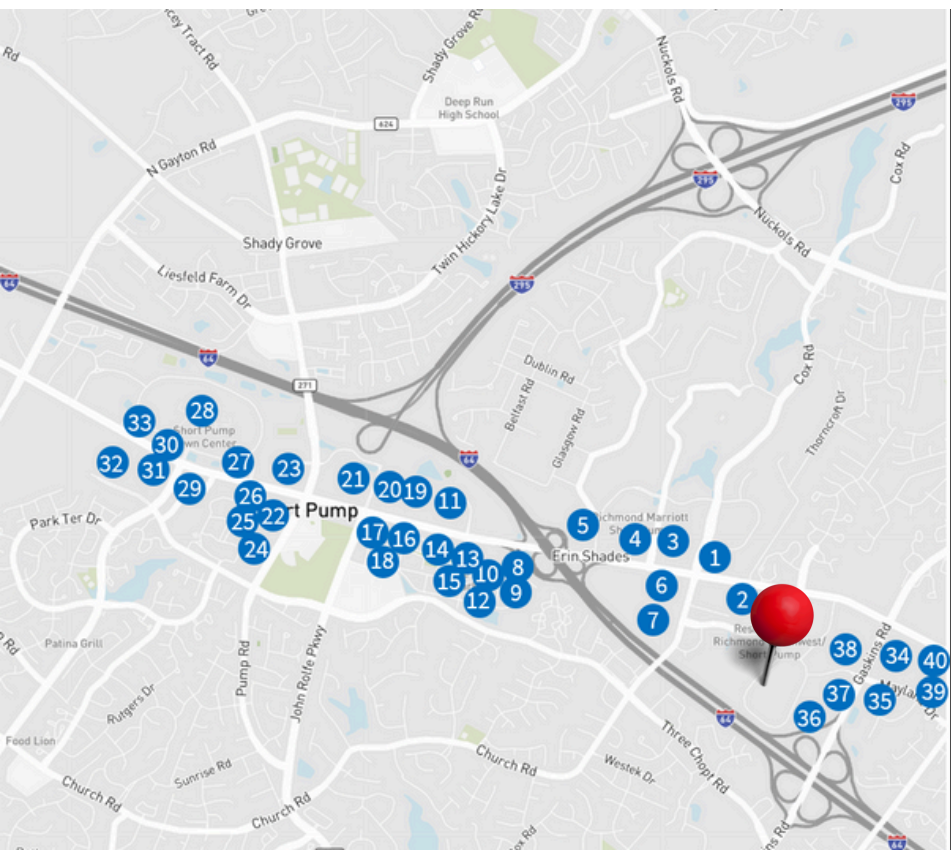


FLOORPLAN

SUITE 6000 | 24,916 SF (can be demised)



AREA HIGHLIGHTS



MAP KEY							
01	Silver Diner	11	World Market	21	Walmart	31	Olive Garden
02	Chipotle	12	acac Fitness	22	Chick-fil-A	32	Kroger
03	Capital Ale House	13	Carrabba's	23	World of Beer	33	CAVA
04	Corner Bakery	14	Bonefish Grill	24	Tazza Kitchen	34	DBG CrossFit
05	CarMax	15	Burger Bach	25	Publix	35	Cracker Barrel
06	Potbelly	16	Chopt Salad Co.	26	Total Wine	36	Holiday Inn Express
07	Marshalls	17	Ulta Beauty	27	Mezeh	37	Sheetz
08	REI	18	Trader Joe's	28	Short Pump Town Center	38	Starbucks
09	HomeGoods	19	The Home Depot	29	Starbucks	39	Westpark Shopping Center
10	Whole Foods	20	Target	30	Cooper's Hawk Winery	40	Ay Mama Mexican Grill



JLL

Gareth Jones

garetho.jones@jll.com

+1 (804) 200 6453

Jimmy Appich

jimmy.appich@jll.com

+1 (804) 200 6420

Jones Lang LaSalle Americas, Inc.

Although information has been obtained from sources deemed reliable, JLL does not make any guarantees, warranties or representations, express or implied, as to the completeness or accuracy as to the information contained herein. Any projections, opinions, assumptions or estimates used are for example only. There may be differences between projected and actual results, and those differences may be material. JLL does not accept any liability for any loss or damage suffered by any party resulting from reliance on this information. If the recipient of this information has signed a confidentiality agreement with JLL regarding this matter, this information is subject to the terms of that agreement. ©2023. Jones Lang LaSalle IP, Inc. All rights reserved.