



# Western Container Building

500 North Third Street, Minneapolis MN



# Photography



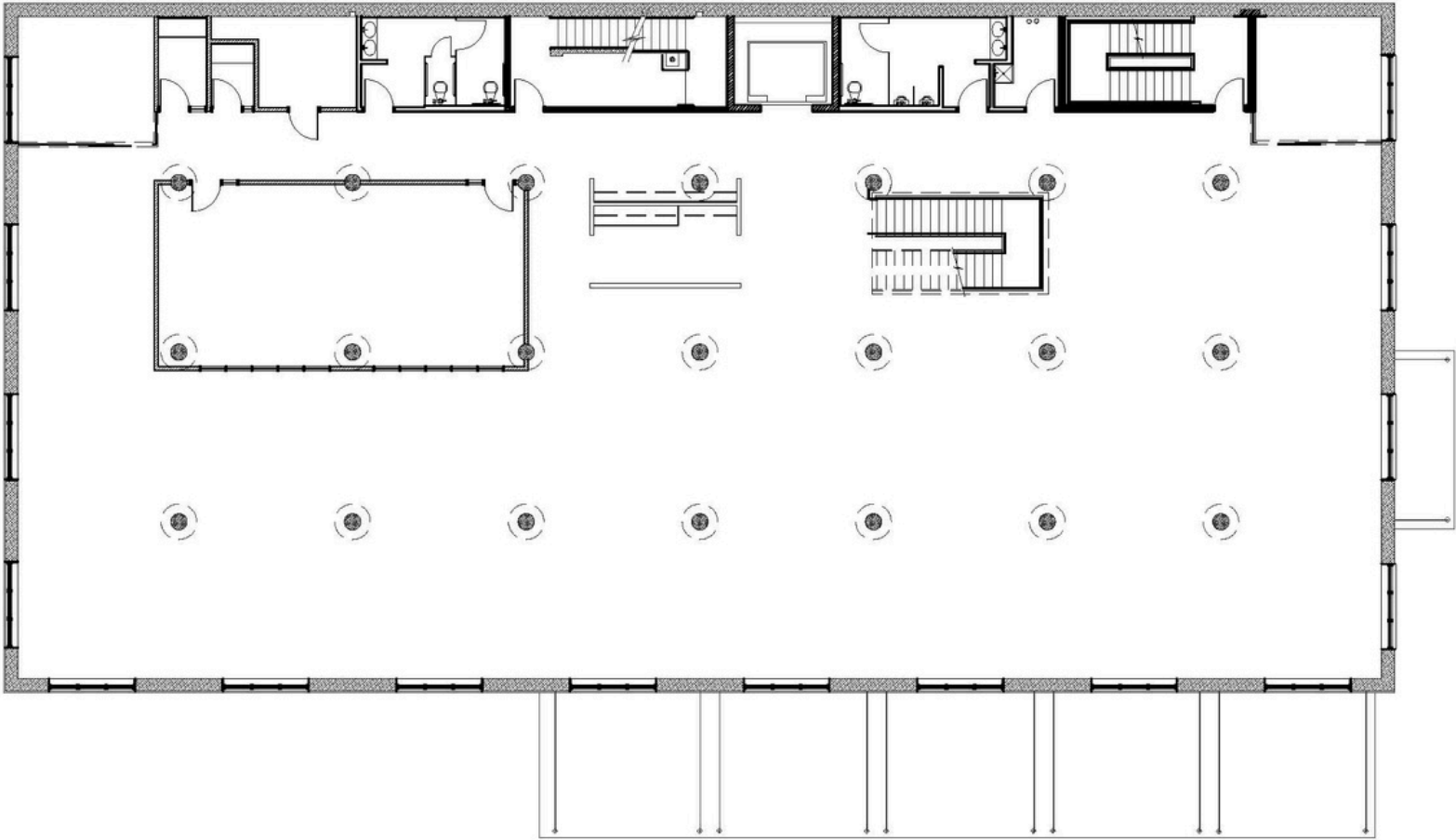


# Sublease Details

- Six-story building with 55,892 RSF
- Immediate availability, term through November 30, 2029
- Build out primarily open configuration
- High exposed ceilings, brick and timber walls
- All new building systems installed in 2015 | 2016
- Contemporary new design
- Access to Amenities at the Steelman Exchange building



# Floorplan



**Suite 200**  
**10,542 RSF**  
**Available**



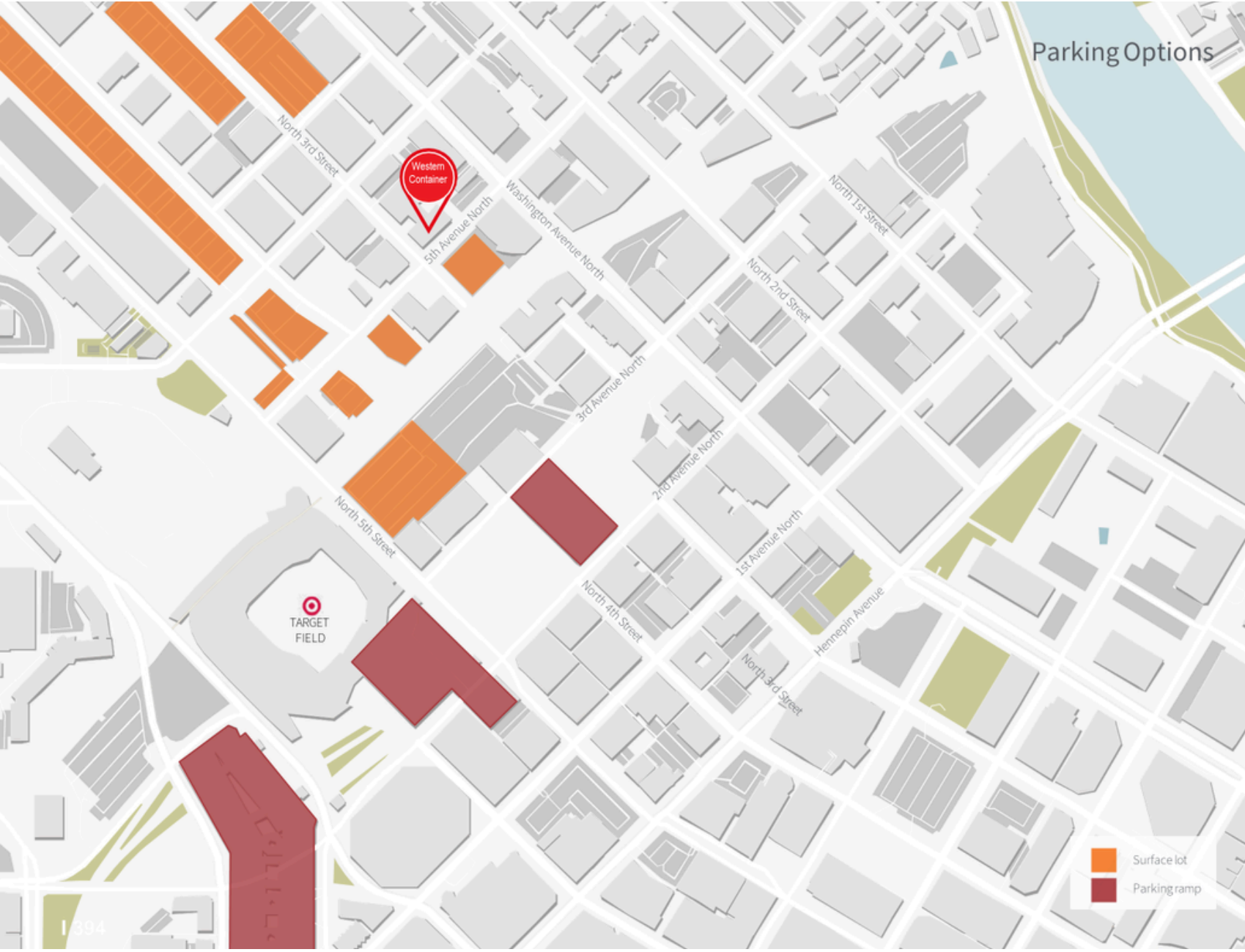
# Prime Location

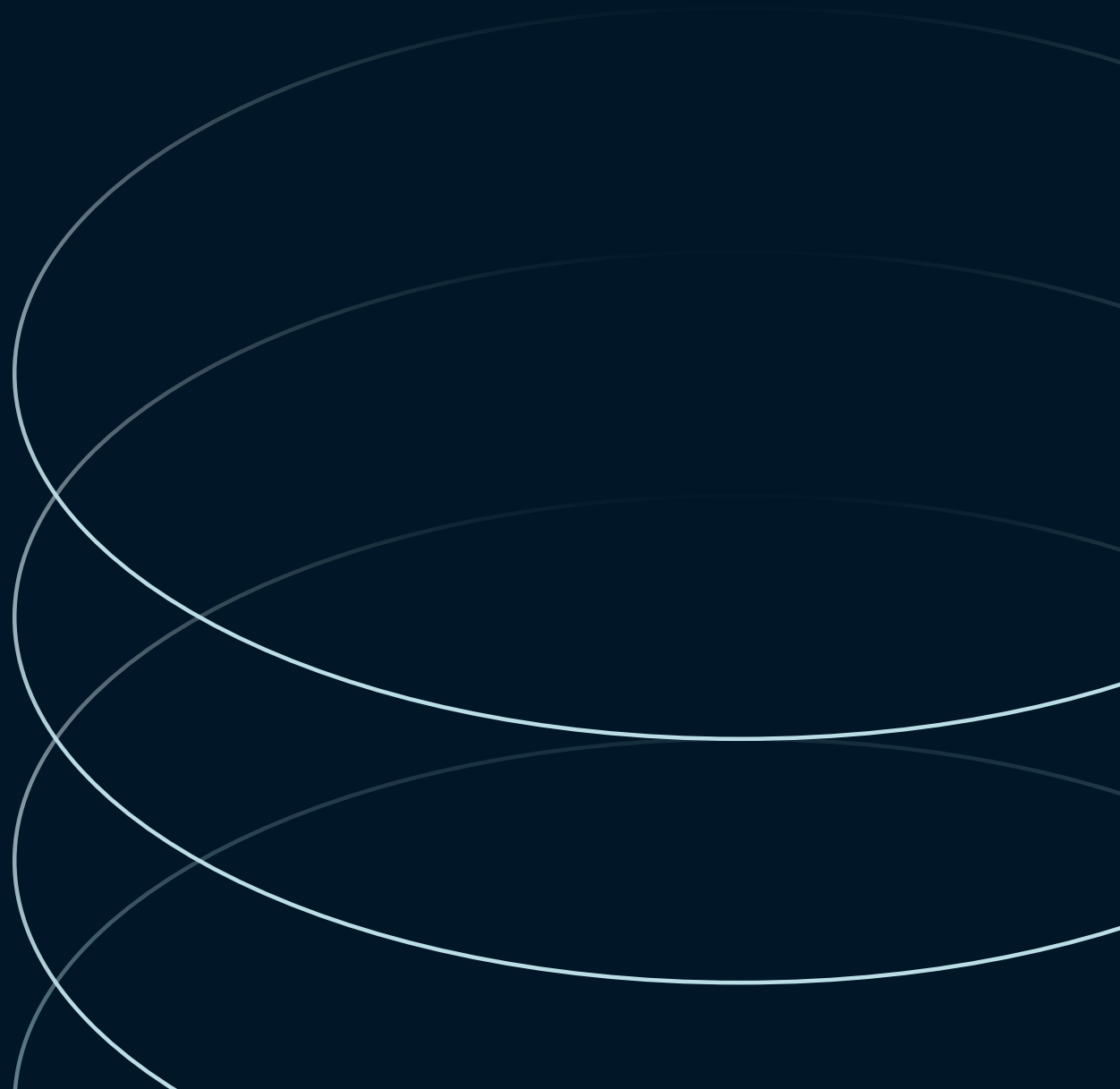
500 North Third Street  
Minneapolis, MN

- Located in the heart of the North Loop neighborhood
- Astonishing views of Minneapolis CBD and North Loop
- Close proximity to Light Rail Transit on Fifth Street and bus routes on Washington Ave
- Easy access to 94 and 394 within blocks of the building
- Immediate proximity to North Loop restaurants and retail
- Near access to Cedar Lake Trail and other major bike paths
- 1/2 block from Washington Ave
- 2 1/2 blocks from Target Field Station



# Parking Map





**Teig Hutchison**  
**[teig.hutchison@jll.com](mailto:teig.hutchison@jll.com)**  
**612 217 5157**

**Mason Hardacre**  
**[mason.hardacre@jll.com](mailto:mason.hardacre@jll.com)**  
**612 217 6714**