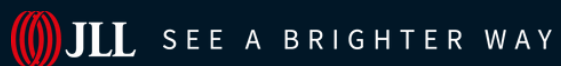




# For Sublease

4435 Waterfront Drive, Glen Allen, VA



# Property Highlights

## 4435 Waterfront Dr, Glen Allen, VA

4435 Waterfront Drive is located in Innsbrook, the largest Class A office park in the Richmond Metro Area with numerous restaurants, shops, and hotels a short walk away. The Innsbrook and Short Pump areas of western Henrico County provide an exceptional quality of life and place to do business.

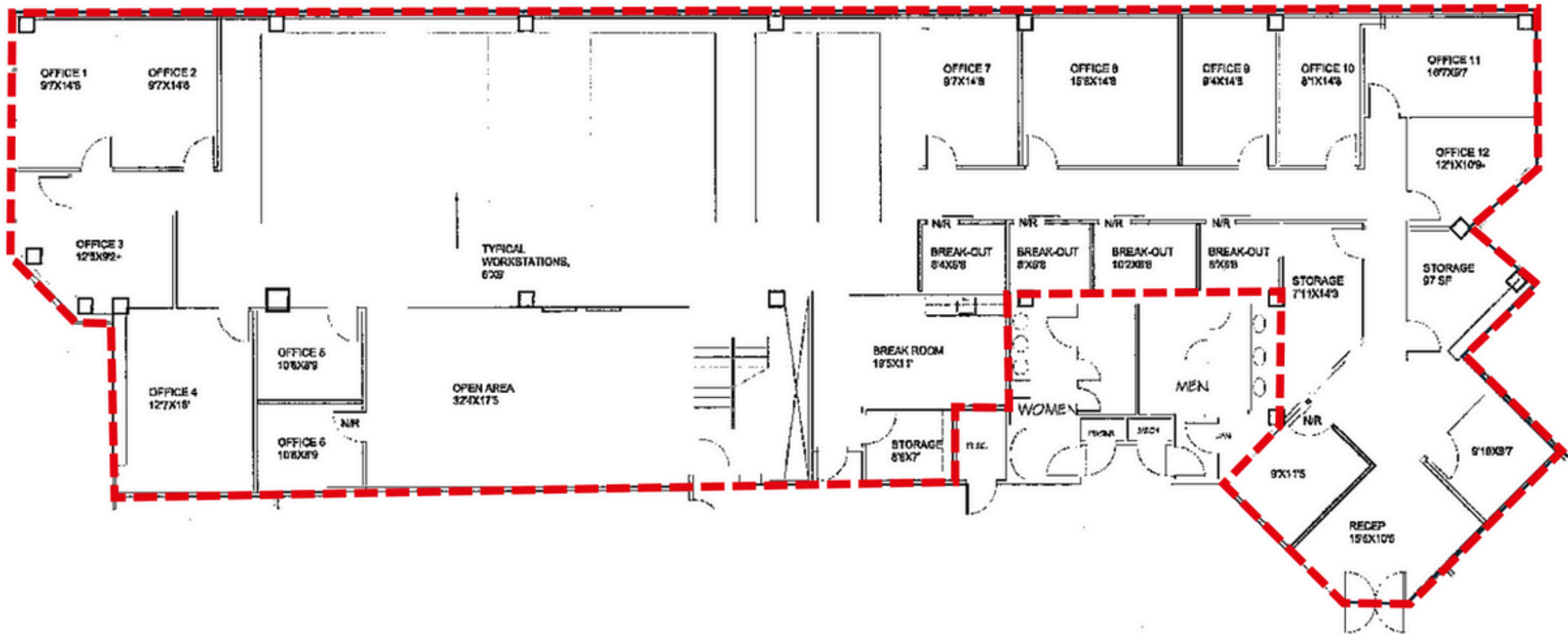
Innsbrook is conveniently positioned close to interchanges for I-64, I-295 and Route 288, providing easy access to the entire Richmond region. Over 500 companies with over 22,000 employees call Innsbrook home.

### Space Features

- Suite 300: 7,504 sf available
- Term through 6/30/2027
- Recently renovated class A office space available
- Elevator lobby exposure
- Furniture available
- On-site cafe and patio overlooking lake
- Available immediately



# FLOOR PLAN





**JLL**

**Kaylin Farruggio**

kaylin.farruggio@jll.com

+1 (804) 802 6125

**Gareth Jones**

garetho.jones@jll.com

+1 (804) 200 6453

Jones Lang LaSalle Americas, Inc.

Although information has been obtained from sources deemed reliable, JLL does not make any guarantees, warranties or representations, express or implied, as to the completeness or accuracy as to the information contained herein. Any projections, opinions, assumptions or estimates used are for example only. There may be differences between projected and actual results, and those differences may be material. JLL does not accept any liability for any loss or damage suffered by any party resulting from reliance on this information. If the recipient of this information has signed a confidentiality agreement with JLL regarding this matter, this information is subject to the terms of that agreement. ©2023. Jones Lang LaSalle IP, Inc. All rights reserved.