

For Lease



1600 Cochran Road | Pittsburgh, PA 15220



Property highlights

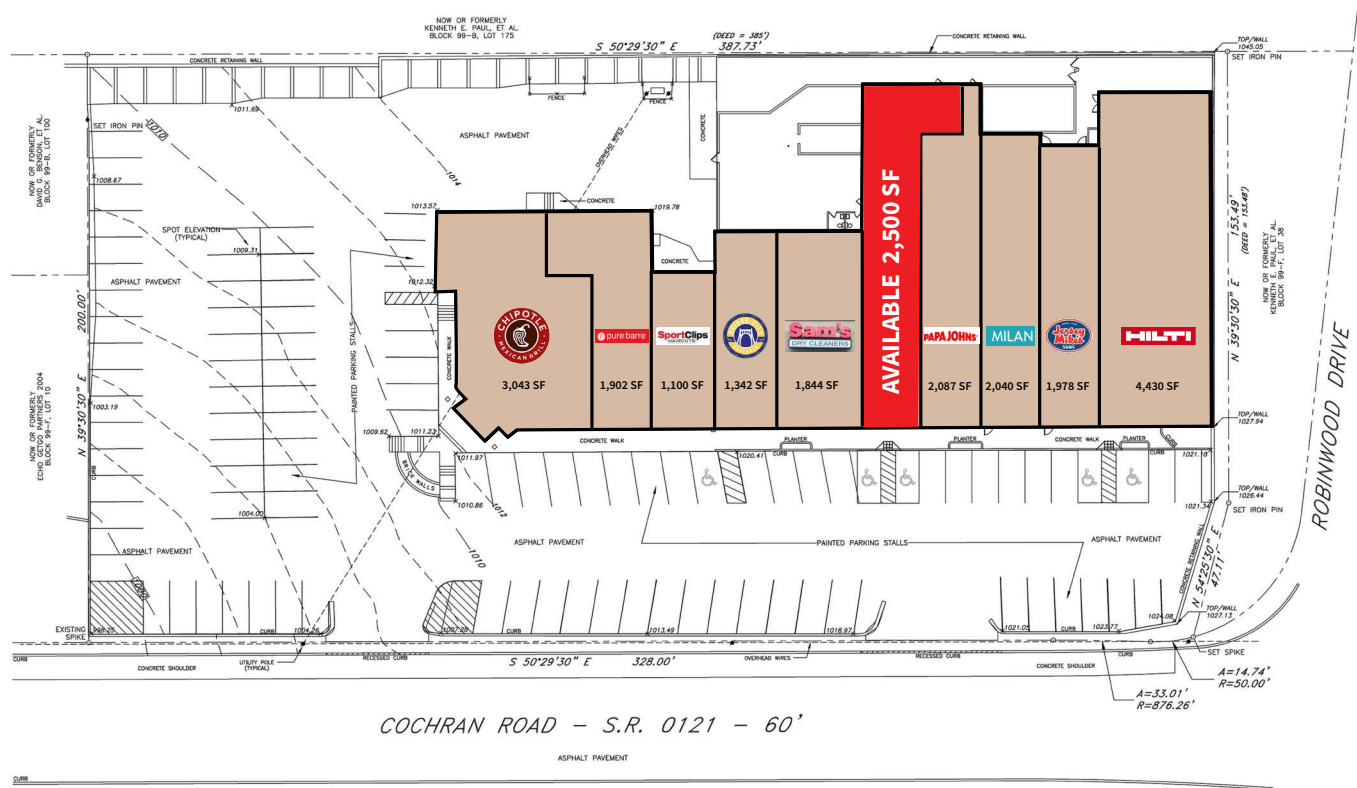
- One space available - 2,500 SF
- High ceilings
- Excellent co-tenancy and visibility
- Strong demographics
- Located along a busy trade route
- Pylon signage available



Contact

Michelle Stewart
Senior Vice President
michelle.stewart@jll.com
+1 412 849 5726

Site plan



Chipotle	3,043 SF	Milan Wax.....	2,040 SF
Pure Barre.....	1,902 SF	Jersey Mike's.....	1,978 SF
Sports Clips.....	1,100 SF	HILTI Tools.....	4,430 SF
Bridge City Beverage	1,342 SF	Regular Parking	92 SPACES
Sams Dry Cleaners.....	1,844 SF	ADA Parking	6 SPACES
AVAILABLE	2,500 SF	Total Parking.....	98 SPACES
Pappa John's	2,087 SF		

Demographics	1-mile	3-miles	5-miles
Population	19,773	121,193	277,414
Daytime Population	19,535	110,696	315,783
Households	9,152	55,912	124,028
Average Household Income	\$134,749	\$118,481	\$109,767
Average Age	42.7	44.5	43.2

DISCLAIMER
Although information has been obtained from sources deemed reliable, Owner, Jones Lang LaSalle, and/or their representatives, brokers or agents make no guarantees as to the accuracy of the information contained herein, and offer the Property without express or implied warranties of any kind. The Property may be withdrawn without notice. If the recipient of this information has signed a confidentiality agreement regarding this matter, this information is subject to the terms of that agreement. ©2025. Jones Lang LaSalle. All rights reserved.

Trade Area

