



West End Logistics

1338 Mount Olive Church Rd., Gastonia, NC

Available 1.1.26

For Lease

Available Space: ±87,360 SF

State-of-the-art Class A industrial building with direct access to I-85

Site Plan

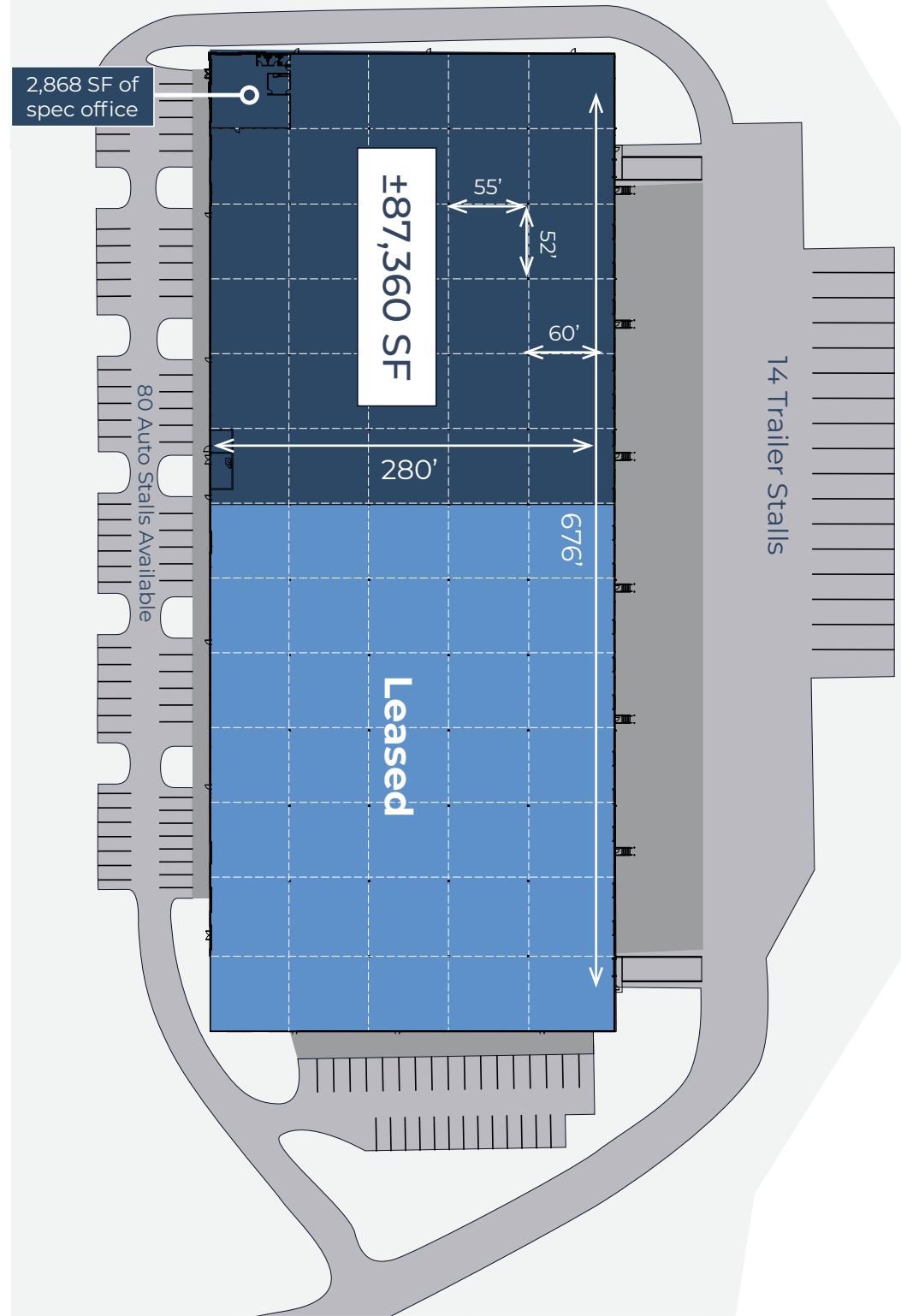
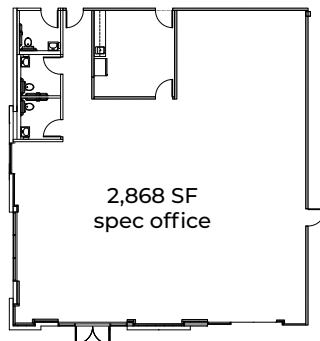


Gaston County Investment Grant Program
5-year tax abatements in place



Building Specs

Available SF	±87,360 SF
Office SF	±2,868 SF
Clear Height	32'
Loading	9 Dock High Doors, 1 Drive In Door 3 Existing Dock Packages (Pit Levelers, Bumpers, Seals, Lights & Fans)
Sprinkler System	ESFR
Trailer Parking	14 Stalls
Auto Parking	80 Stalls
Building Dimensions	280' X 676'
Column Spacing	55' X 52' with 60' Speed Bays
Power	1,400 amps, 277/480V 6 Existing Forklift Charging Stations
Lighting	30 Foot-Candles
HVAC	1 HVLS Fan 55-Degree Heating



Location Map



Amenities within 5 miles





Contacts

Brad Cherry, CCIM, SIOR
Exec. Managing Director
Charlotte, NC
+1 704 927 3013
brad.cherry@jll.com

Matthew Greer, CCIM, SIOR
Exec. Managing Director
Charlotte, NC
+1 704 804 5762
matthew.greer@jll.com

Jay Hill
Senior Vice President
Charlotte, NC
+1 704 804 5754
jay.hill@jll.com



Although information has been obtained from sources deemed reliable, neither Owner nor JLL makes any guarantees, warranties or representations, express or implied, as to the completeness or accuracy as to the information contained herein. Any projections, opinions, assumptions or estimates used are for example only. There may be differences between projected and actual results, and those differences may be material. The Property may be withdrawn without notice. Neither Owner nor JLL accepts any liability for any loss or damage suffered by any party resulting from reliance on this information. If the recipient of this information has signed a confidentiality agreement regarding this matter, this information is subject to the terms of that agreement. ©2025. Jones Lang LaSalle IP, Inc. All rights reserved.