



UC San Diego

3333 - 10350

N Torrey Pines Ct

LINK | *Torrey Pines*

UC San Diego Innovation Hub

LinkTorreyPines.com



ALTOS



SYNTHETIC GENOMICS®

SORRENTO
VALLEY

GOLF COURSE

N TORREY PINES ROAD



SBP

© Johnson & Johnson

SBP



TORREY PINES

LINK

Torrey Pines

UC San Diego Innovation Hub



Gary & Mary
West Wireless Health
Institute™

conKwest

astellas

GENERAL ATOMICS

PACIRA
PHARMACEUTICALS, INC.

PACIRA
PHARMACEUTICALS, INC.

LabCorp

ThermoFisher
SCIENTIFIC

GENESEE AVENUE



SALK INSTITUTE
FOR BIOLOGICAL STUDIES

UC San Diego

Click here to take flight and see the unmatched views that **LINK** has to offer

3344

3366

3377

10350

3333

LINK TODAY WITH YESTERDAY

Perched above the Pacific Ocean and nestled along the 10th hole of the Torrey Pines Golf Course, Link boasts panoramic views, awe-inspiring sunsets and cool ocean breezes. Come be a part of this community rich with history, overlooking a famous course built on the site of Camp Callan, a U.S. Army installation during World War II.



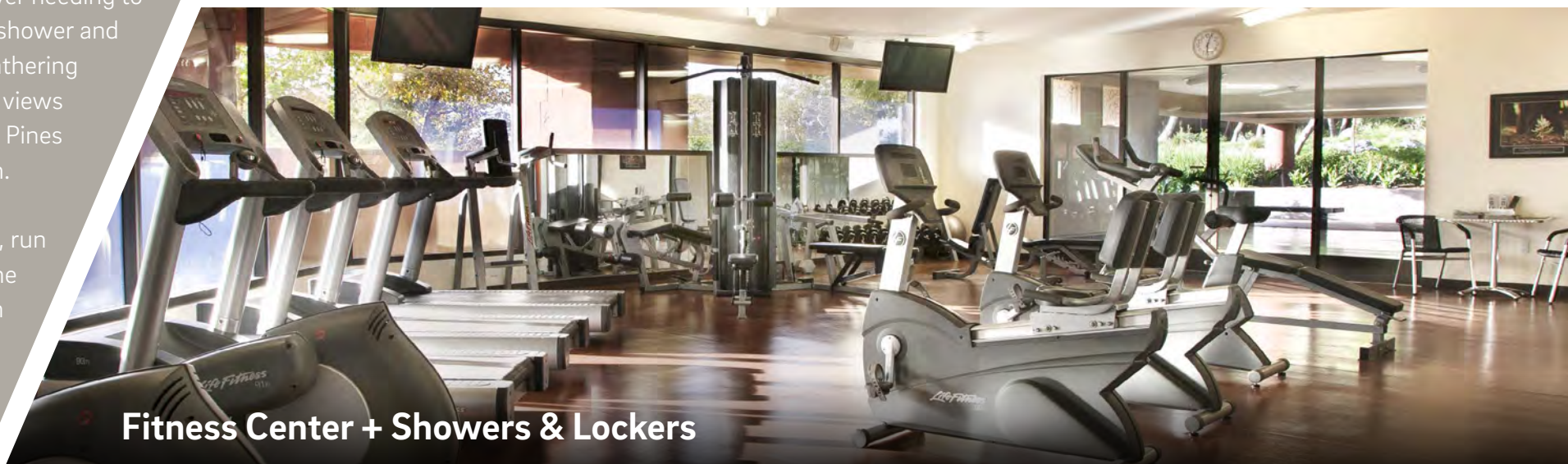
Campus Amenities

On campus without ever needing to leave. Enjoy our gym, shower and lockers, impromptu gathering spaces, and incredible views overlooking the Torrey Pines Golf Course and ocean.

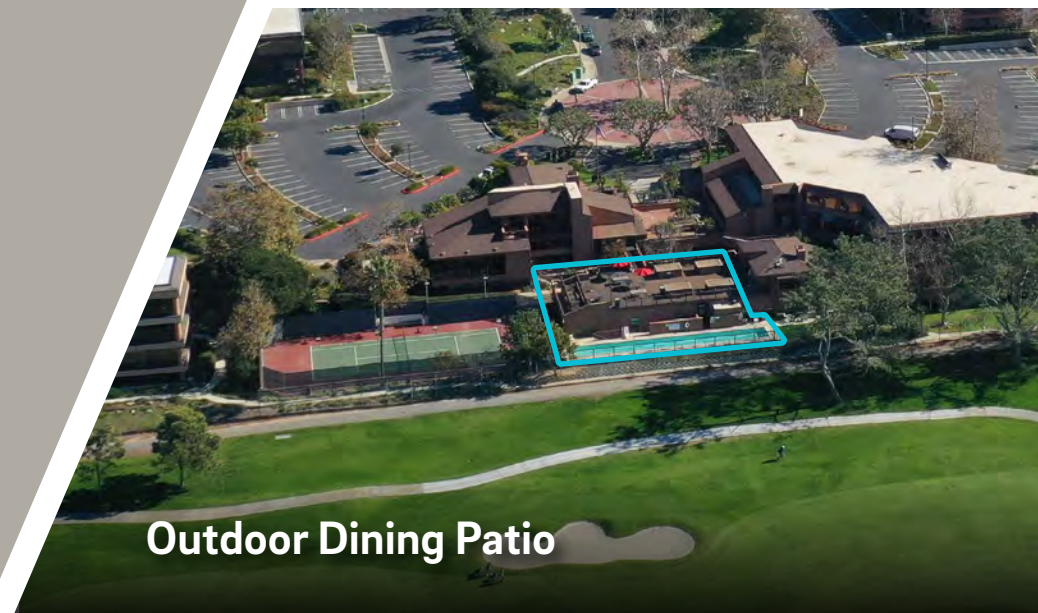
Golf, hike, surf, paddle, run and glide... We offer the quickest access to San Diego's best outdoor activities without wasting extra time.



Outdoor Seating



Fitness Center + Showers & Lockers



Outdoor Dining Patio



Weekly Food Trucks

Nearby Dining Options within ± 5 -minute drive

Greenfinch | Mustangs and Burros

Cliff Hanger Cafe

Bella Vista Social Club

LINK Torrey Pines
UC San Diego Innovation Hub

The Grill at Torrey Pines

The Bistro at The Strand

Cafe Ventanas

The Farmer & The Sea Horse

Joya Kitchen





LINK TO CHANGE

Are you looking for concrete floors, expansive window lines and modern finishes? Link will change the way you work with just the right workspace.

Availability Summary

Building - Suite	RSF	Details
3333 - Suite 100	8,588	11 private offices, large board room, break area, IT room, coffee/production room, storage, open office area.
3333 - Suite 200	13,165	20 private offices, 8 conference rooms, break area, IT room, 2 coffee/production rooms, mail room, storage and open office area.
3333 - Suite 300	11,238	23 private offices, reception, 2 conference rooms, 2 break areas, IT room, production room, 2 storage rooms, 3 huddle rooms and open office area.
3333 - Suite 400	13,487	Available October 2026. Top floor space with 28 private offices, large board room, 2 conference rooms, huddle rooms, mail room, IT room, and production room. Includes a private patio next to large break-area with unmatched ocean views. Building top signage available.
3344 - Suite 100	9,090	Available with 60 days notice. 5 conference/huddle rooms, 7 private offices, 38 workstations, "Zoom" studio, break room and kitchenette, ocean views, private balcony, and private elevator entry to lobby. Building top signage available.
3366 - Suite 110	2,400	Creative space with exposed ceilings, partial ocean views, 2 meeting rooms, conference room, open kitchen, and balance open office.
3366 - Suite 130	3,100	Creative spec suite with ocean views, 3 offices, room for 8 cubicles, conference room, open concept kitchen. Can be combined with Suite 110 for 5,500 sf.
3366 - Suite 140	1,722	3 offices, conference room, break area, reception, IT/server room.
3366 - Suite 220	2,190	Cool & creative space with upgraded finishes, polished concrete and ocean/golf course views.
3366 - Suite 250	2,153	Spec suite coming Q1 2026. Reception area, 4 offices, break room, conference room, storage/server room and open office.
3366 - Suite 270	672	Available December 2025. 2 offices, break room, and open office.
3366 - Suite 310	3,493	5 offices, large conference room, small conference room, open area for cubicles, kitchen, polished concrete to the open area & kitchen. Ocean/golf course views. Furniture shown on floor plan is not included.
3366 - Suite 318	950	2 offices, copy/print room and reception.
3377 - Suite 150	9,095	Shell space. Direct entry from building exterior. Potential creative space with ocean views.



[Take a Virtual Tour - Fitness Center](#)

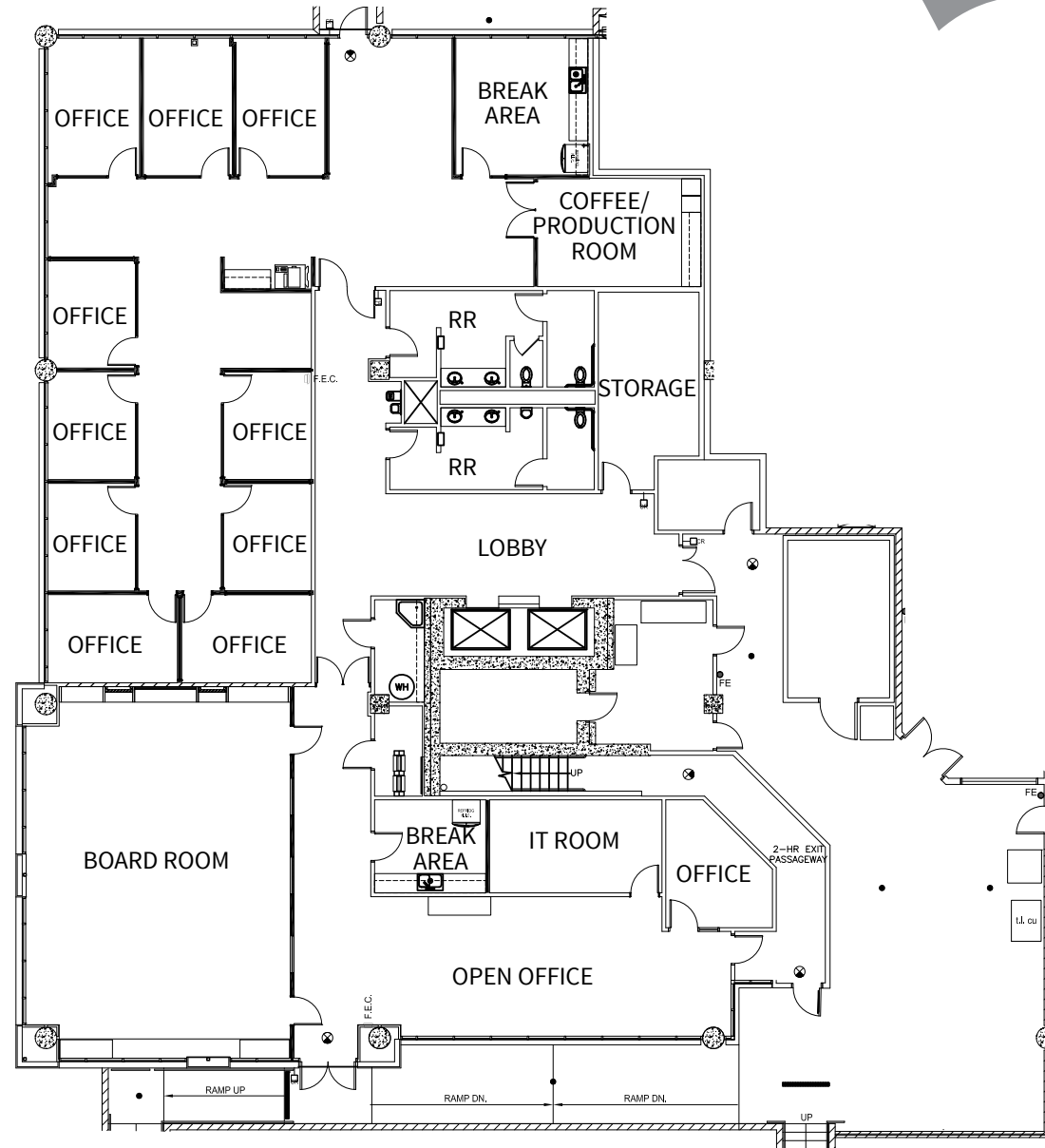




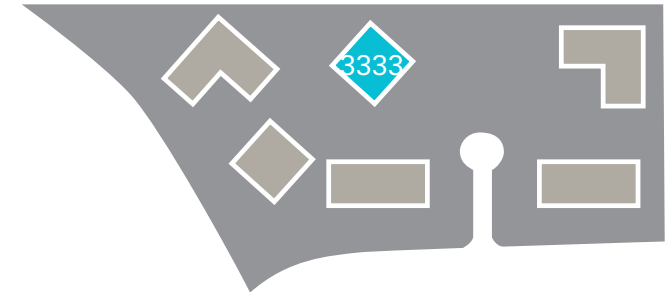
3333 N. Torrey Pines Court | **First floor**

Suite 100 - 8,588 sf | available now

- 11 private offices
- Large board room
- Break area
- IT room
- Coffee / Production room
- Storage
- Open office area



↑ West

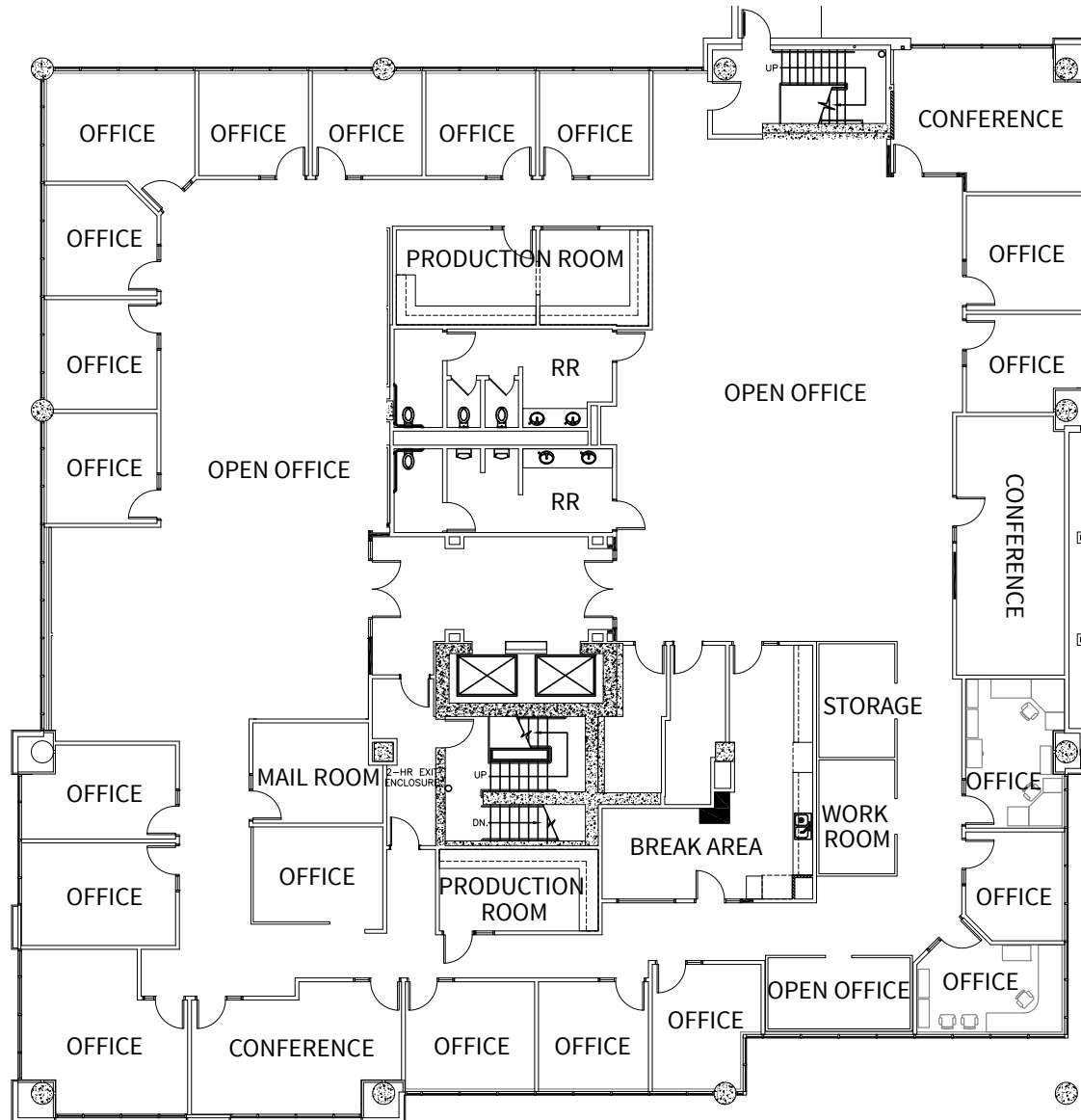
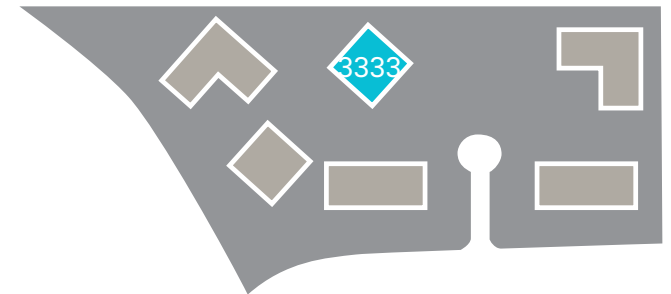


3333 N. Torrey Pines Court | **Second floor**

Suite 200 - 13,165sf | available now

- 20 private offices
- 3 Conference rooms
- Break area
- IT room
- 2 Coffee / Production rooms
- Work room
- Mail room
- Storage
- Open office area

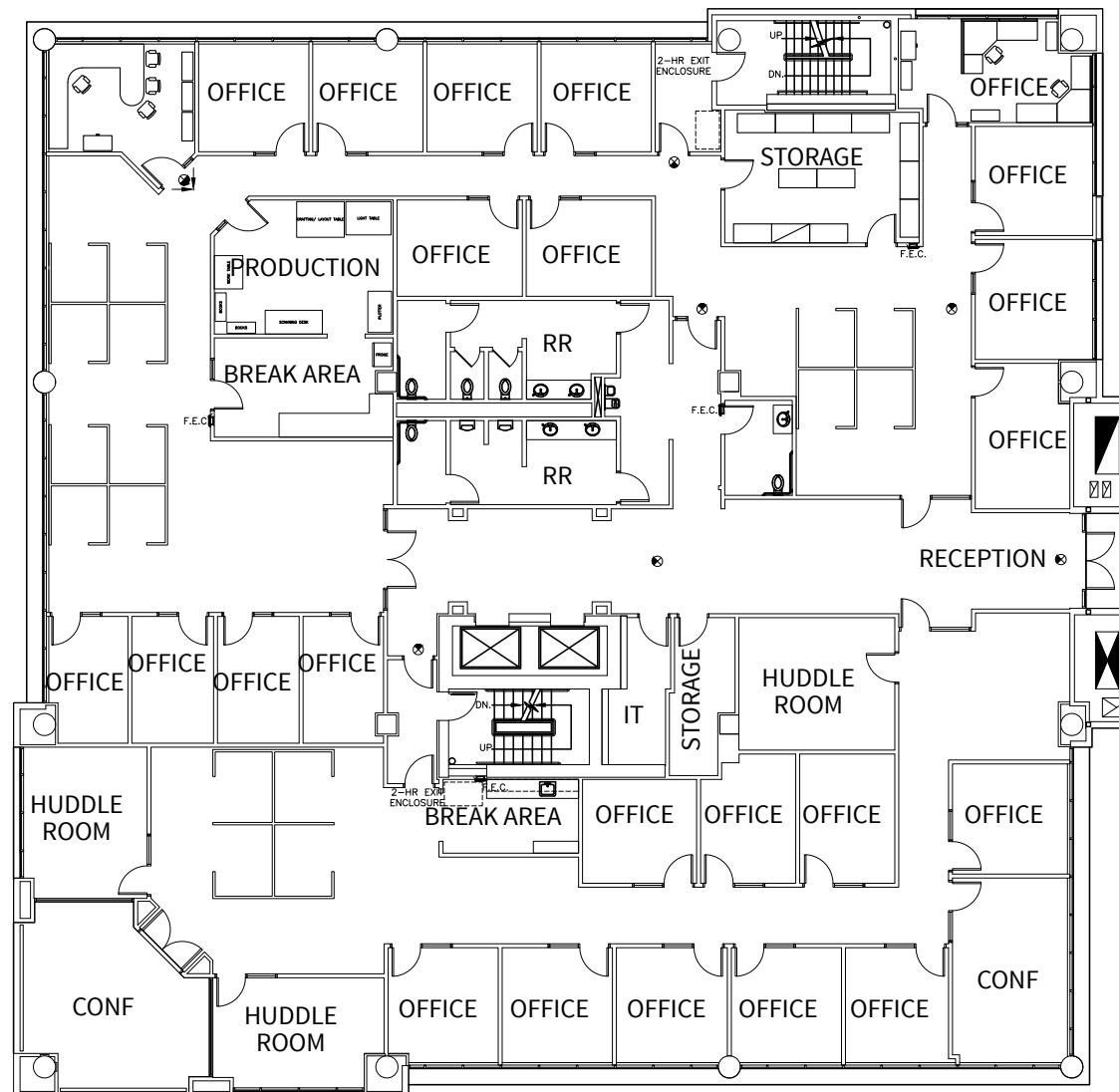
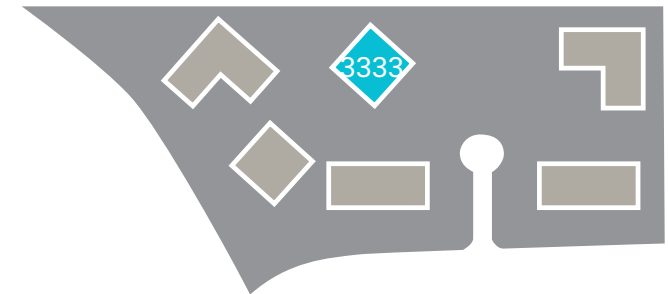
↑ West



3333 N. Torrey Pines Court | **Third floor**
Suite 300 - 11,238 sf | available now

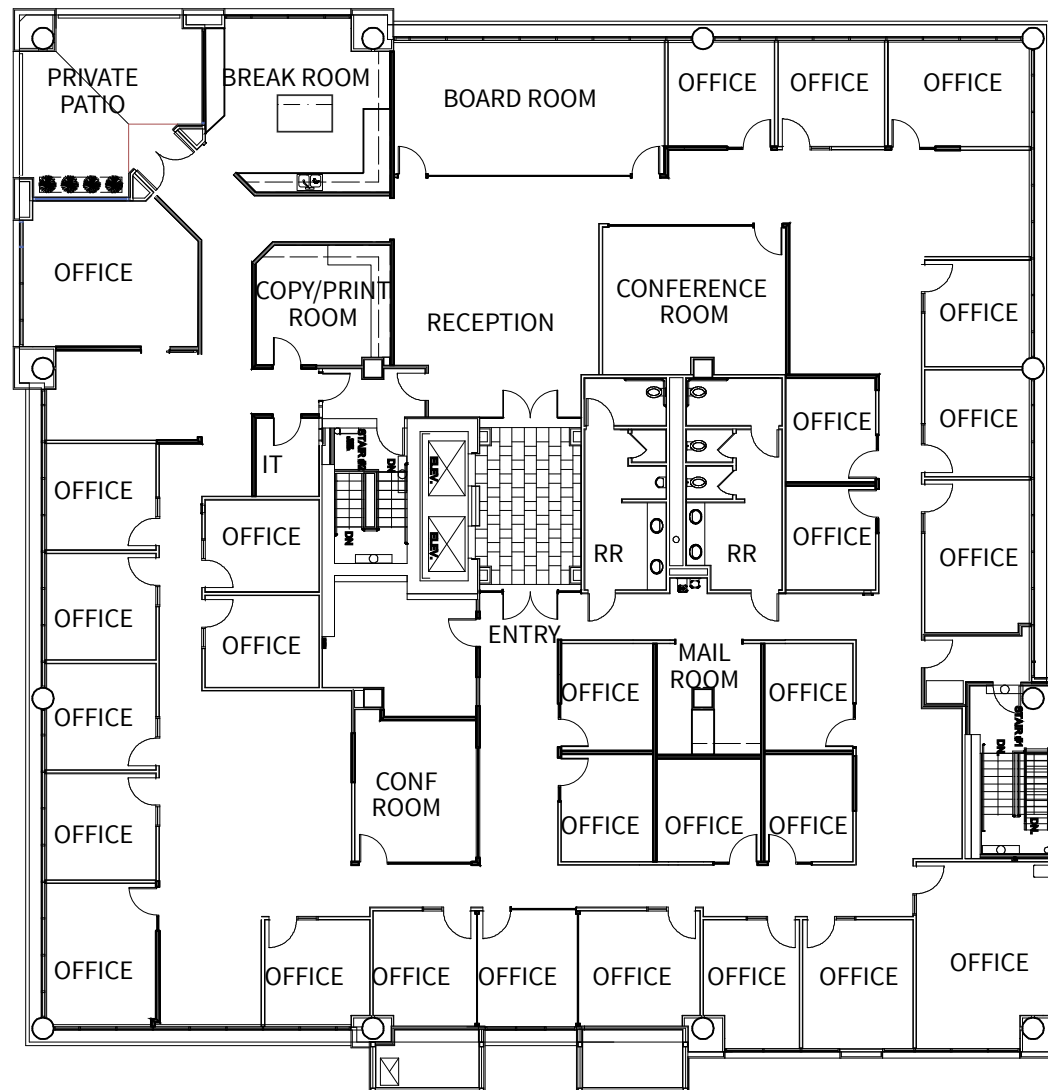
- 23 private offices
- Reception
- 2 Conference rooms
- 2 Break areas
- IT room
- Production room
- 2 Storage rooms
- 3 Huddle rooms
- Open office area

↑ West



3333 N. Torrey Pines Court | **Fourth floor**
Suite 400 - 13,487sf | available October 2026

- 28 private offices
- Large board room
- 2 conference rooms
- Huddle rooms
- Mail room
- IT room
- Production room
- Private patio directly next to large break-area with unmatched ocean views
- Building top signage available

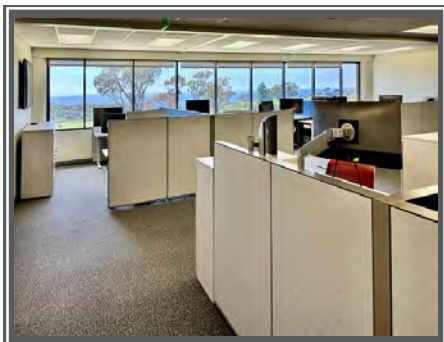
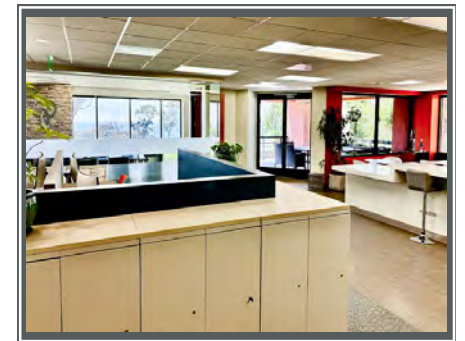
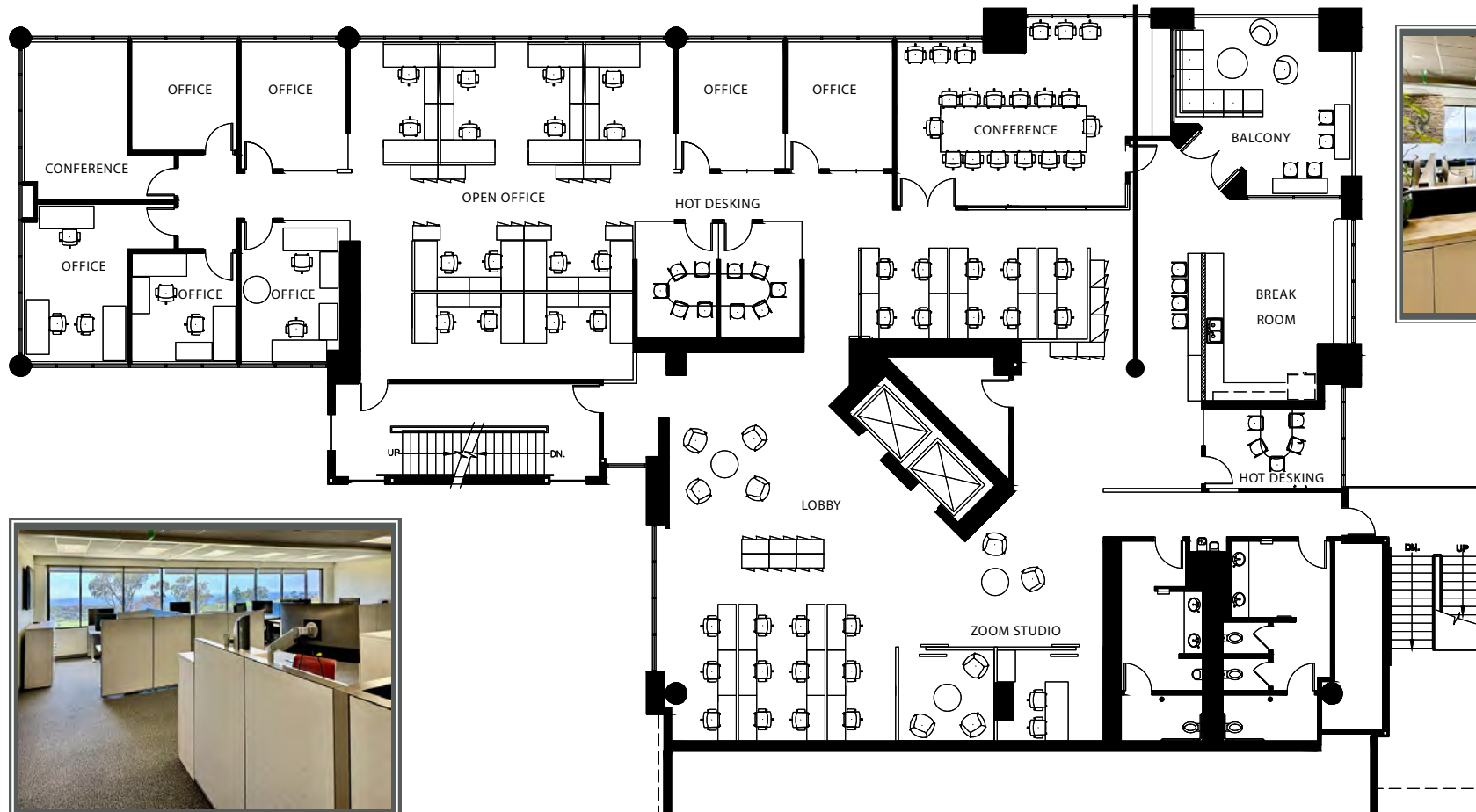
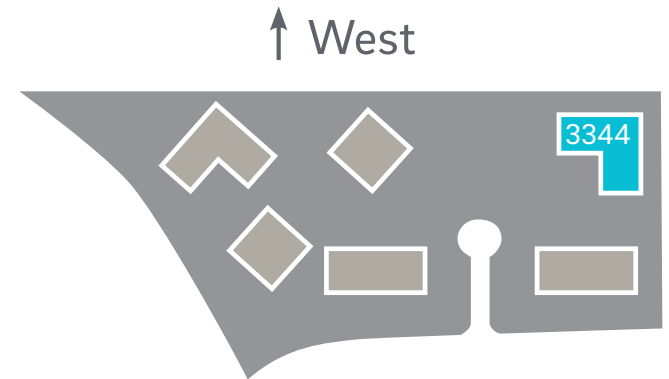




3344 N. Torrey Pines Court | **First floor**
Suite 100 - 9,090 sf | available w/60 days notice

- 5 conference/huddle rooms
- 7 private offices
- 38 workstations
- "Zoom" studio
- Break room & kitchenette
- Ocean views
- Private balcony
- Private elevator entry to lobby
- Building top signage available

 [Take a Virtual Tour - 3344 #100](#)



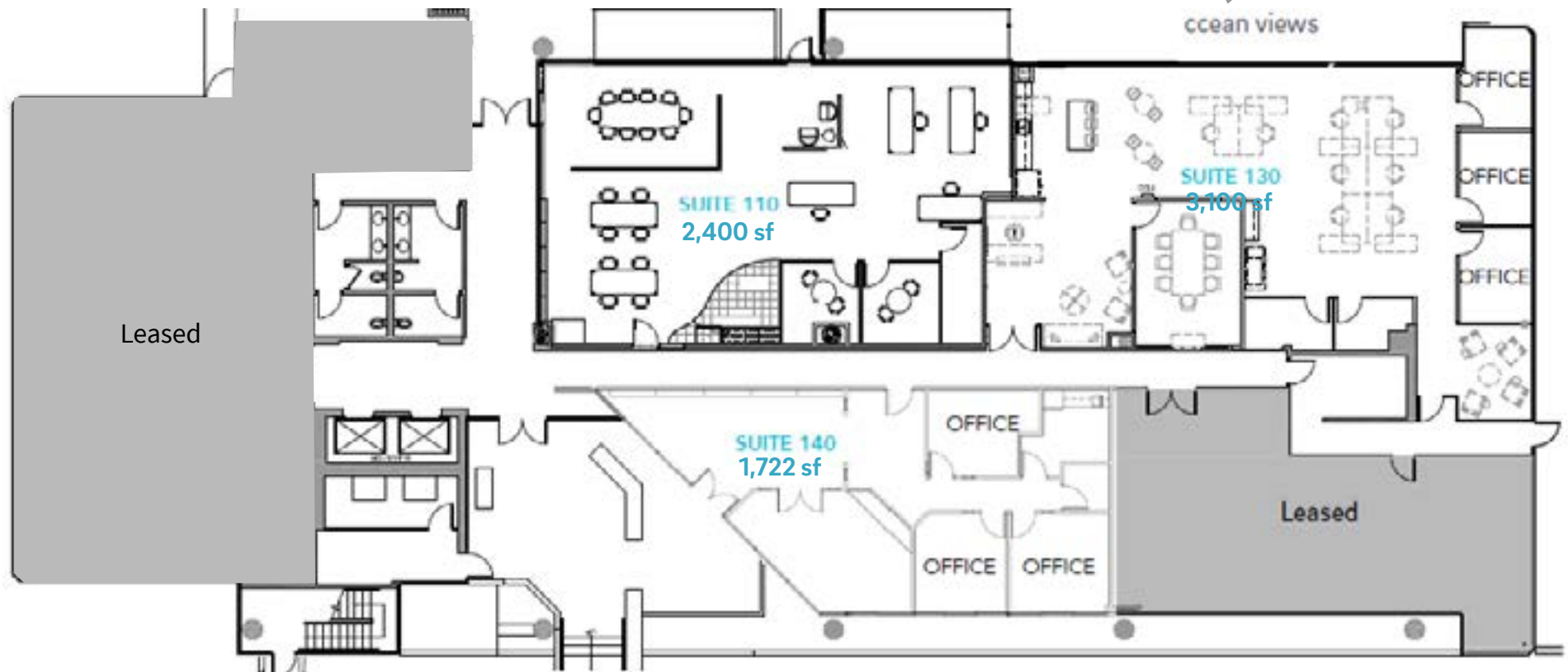
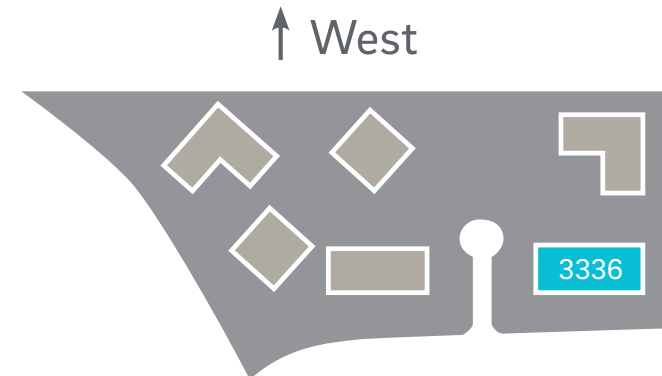


3366 N. Torrey Pines Court | **First floor**

Suite 110 - 2,400 sf | available now

Suite 130 - 3,100 sf | available now

Suite 140 - 1,722 sf | available now



Suite 110 - 2,400 sf

- Creative space w/exposed ceilings
- Partial ocean views
- 2 meeting rooms
- Conference room
- Open kitchen
- Balance open office

Suite 130 - 3,100 sf

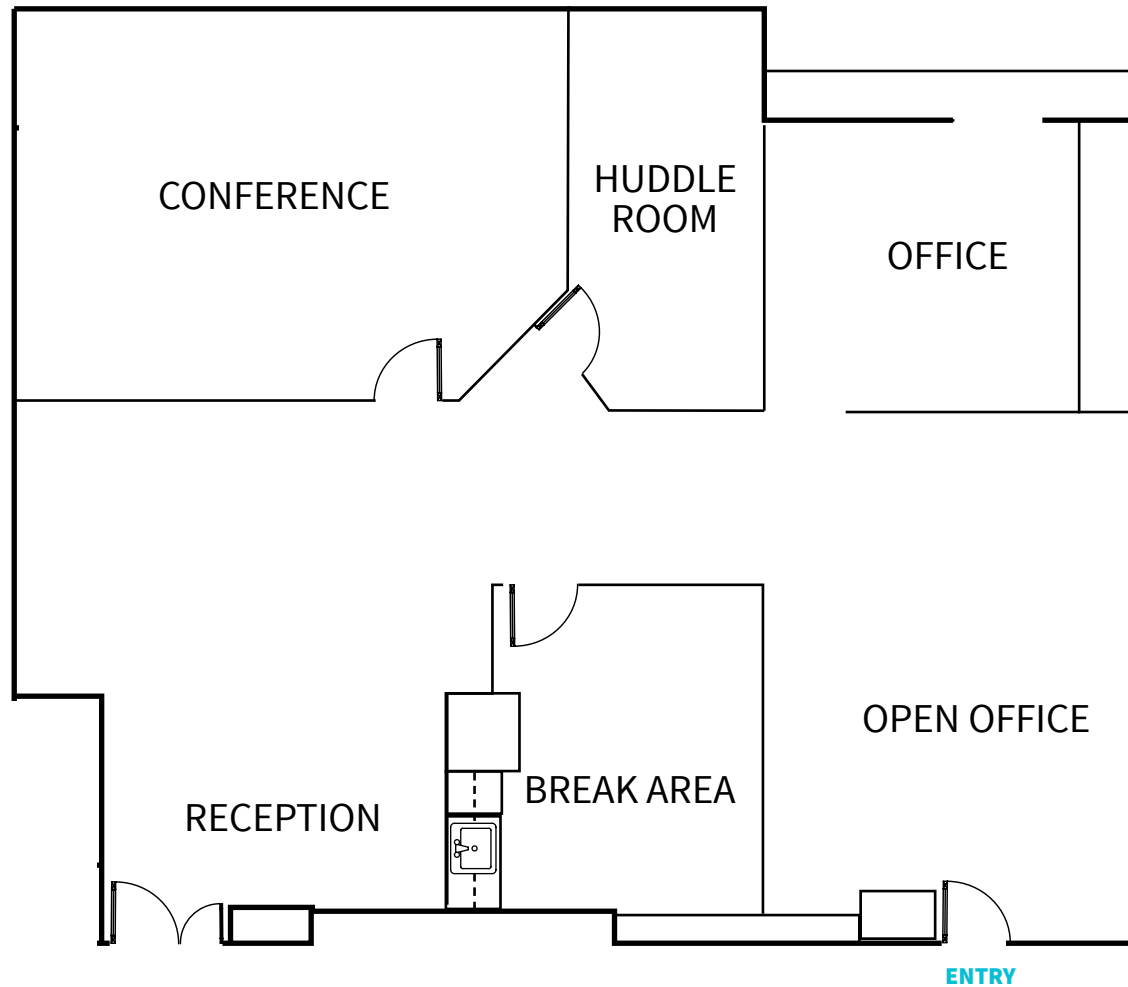
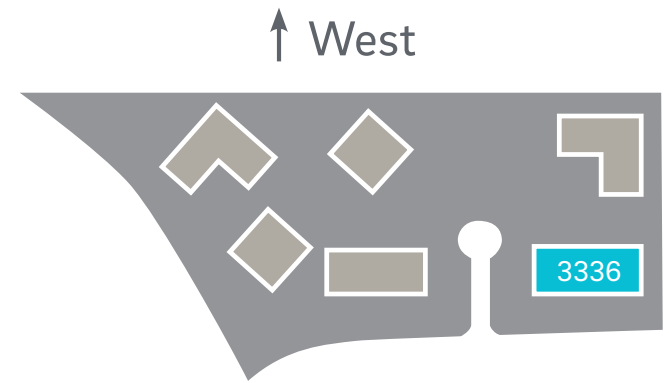
- Creative spec suite w/ocean views
- 4 Offices
- Room for 8 cubicles
- Conference room
- Open kitchen

Suite 140 - 1,722 sf

- Reception
- 3 Offices
- Conference room
- Break area
- IT/server room

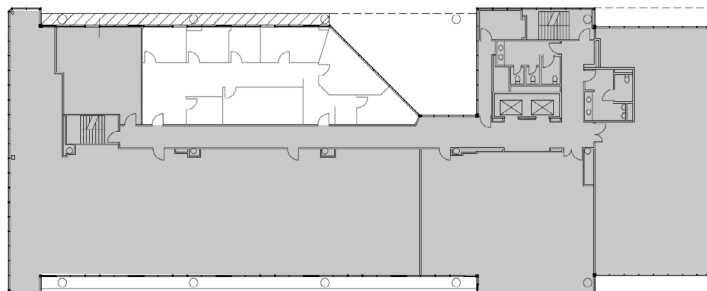
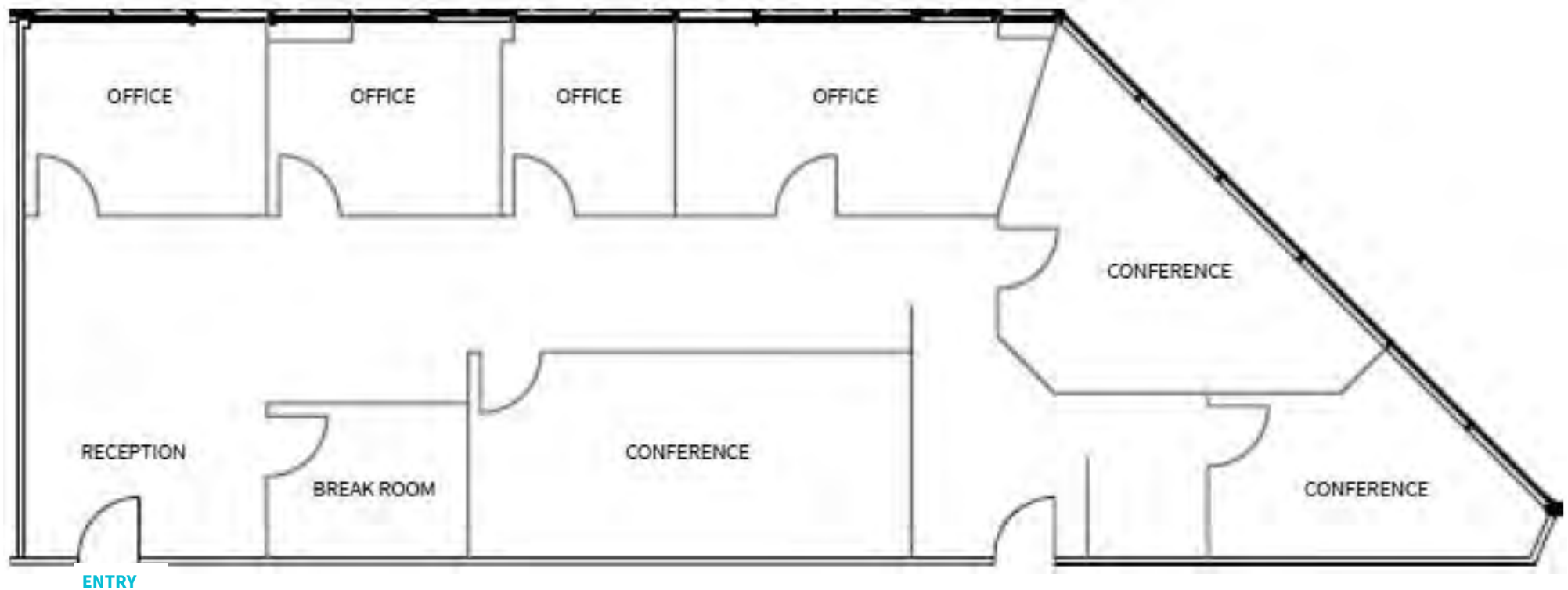
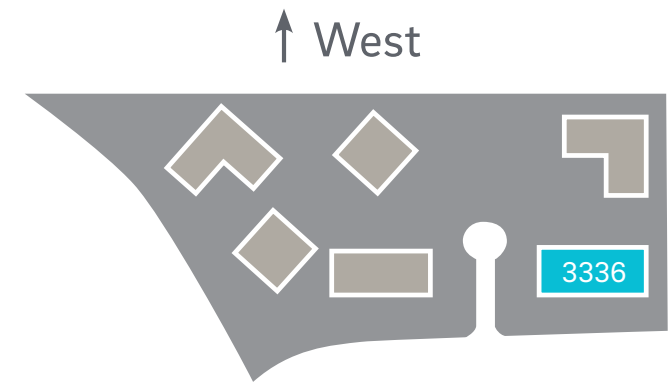
3366 N. Torrey Pines Court | **Second floor**
Suite 220 - 2,190 sf | available now

- Suite 220
- Ocean/golf course views
- Cool & creative space with upgraded finishes, polished concrete
- Private office
- Huddle room
- Conference room
- Break area
- Open office



3366 N. Torrey Pines Court | **Second floor**
Suite 250 - 2,153 sf | available now | as-is plan

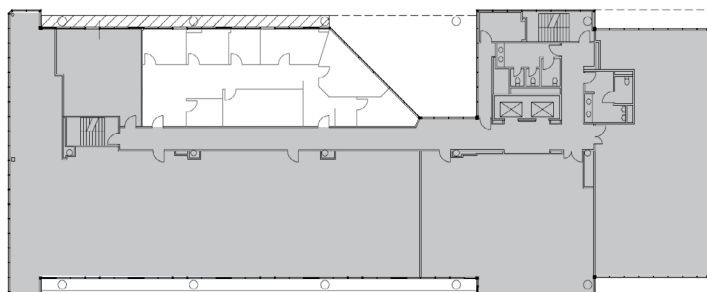
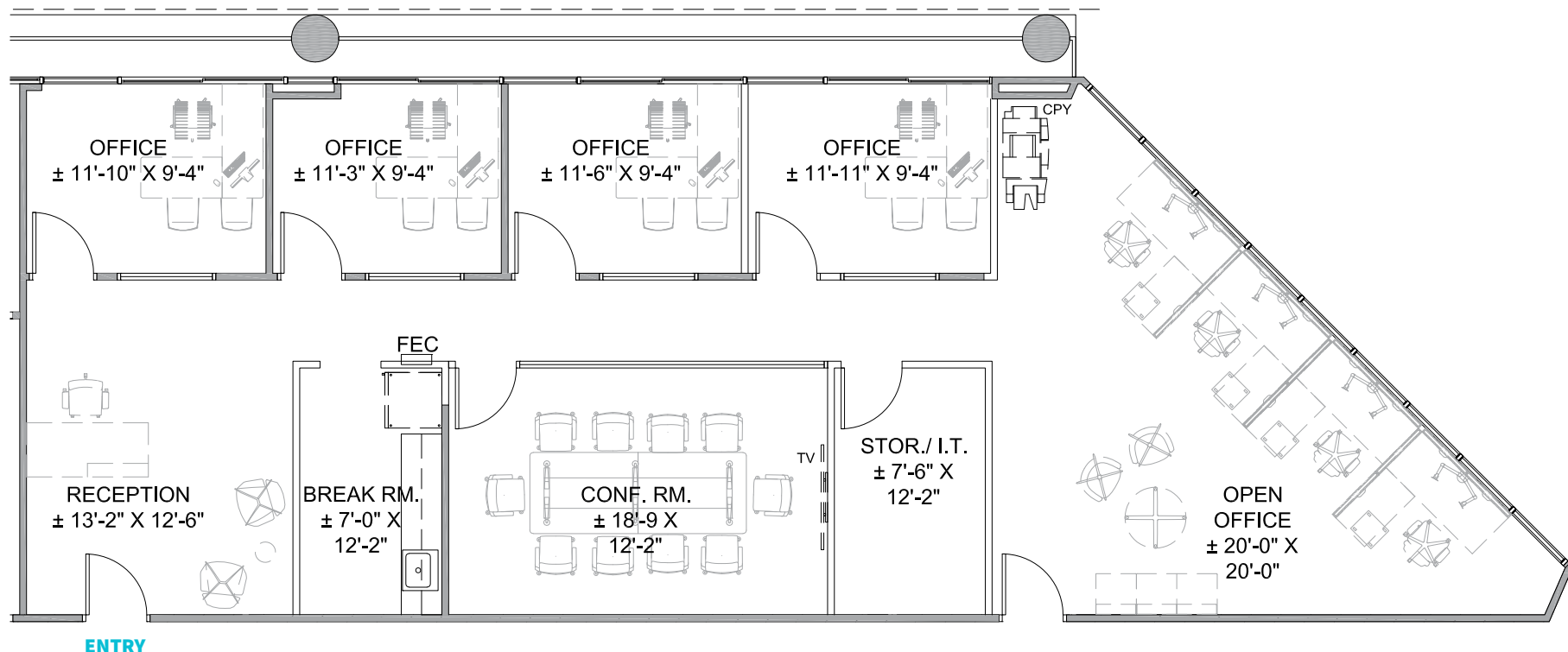
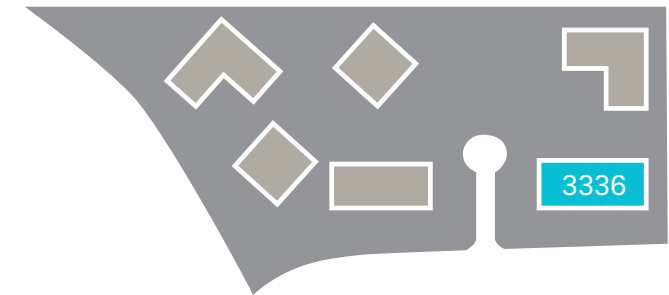
- Reception
- 4 Offices
- 3 Conference rooms
- Break room



3366 N. Torrey Pines Court | **Second floor**
Suite 250 - 2,153 sf | available Q1 2026

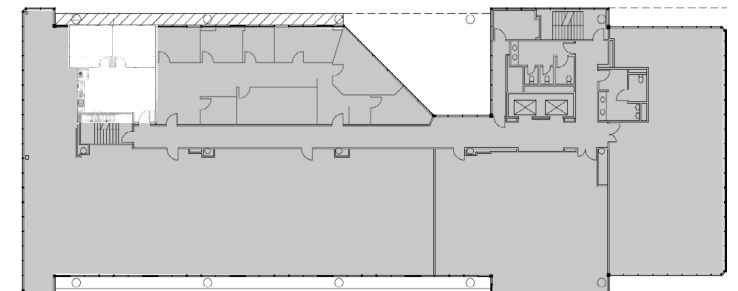
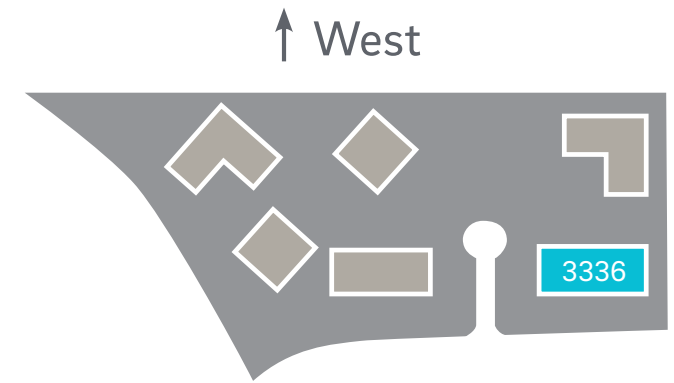
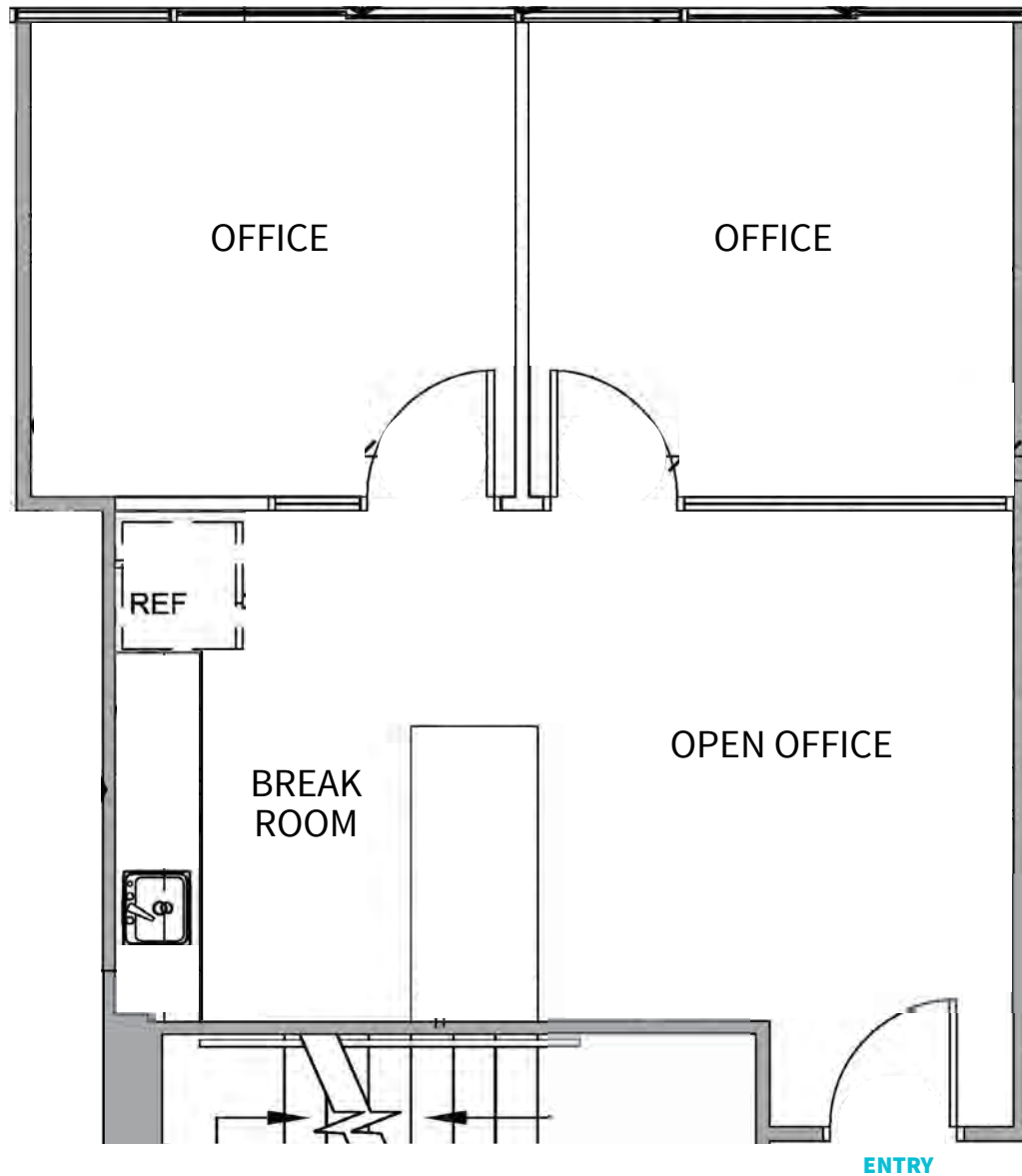
- To be Delivered Spec Suite
- Reception
- 4 Offices
- Break room
- Conference room
- Storage/server room
- Open office area

↑ West



3366 N. Torrey Pines Court | **Second floor**
Suite 270 - 672 sf | available December 2025

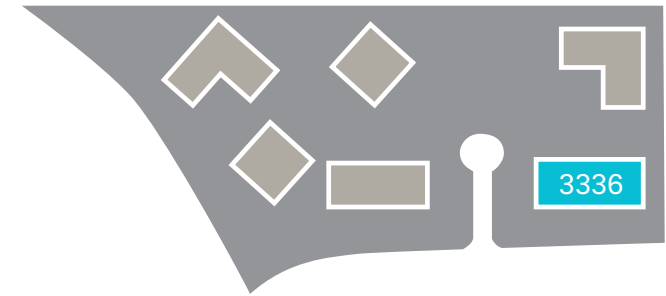
- 2 offices
- Break room
- Open office



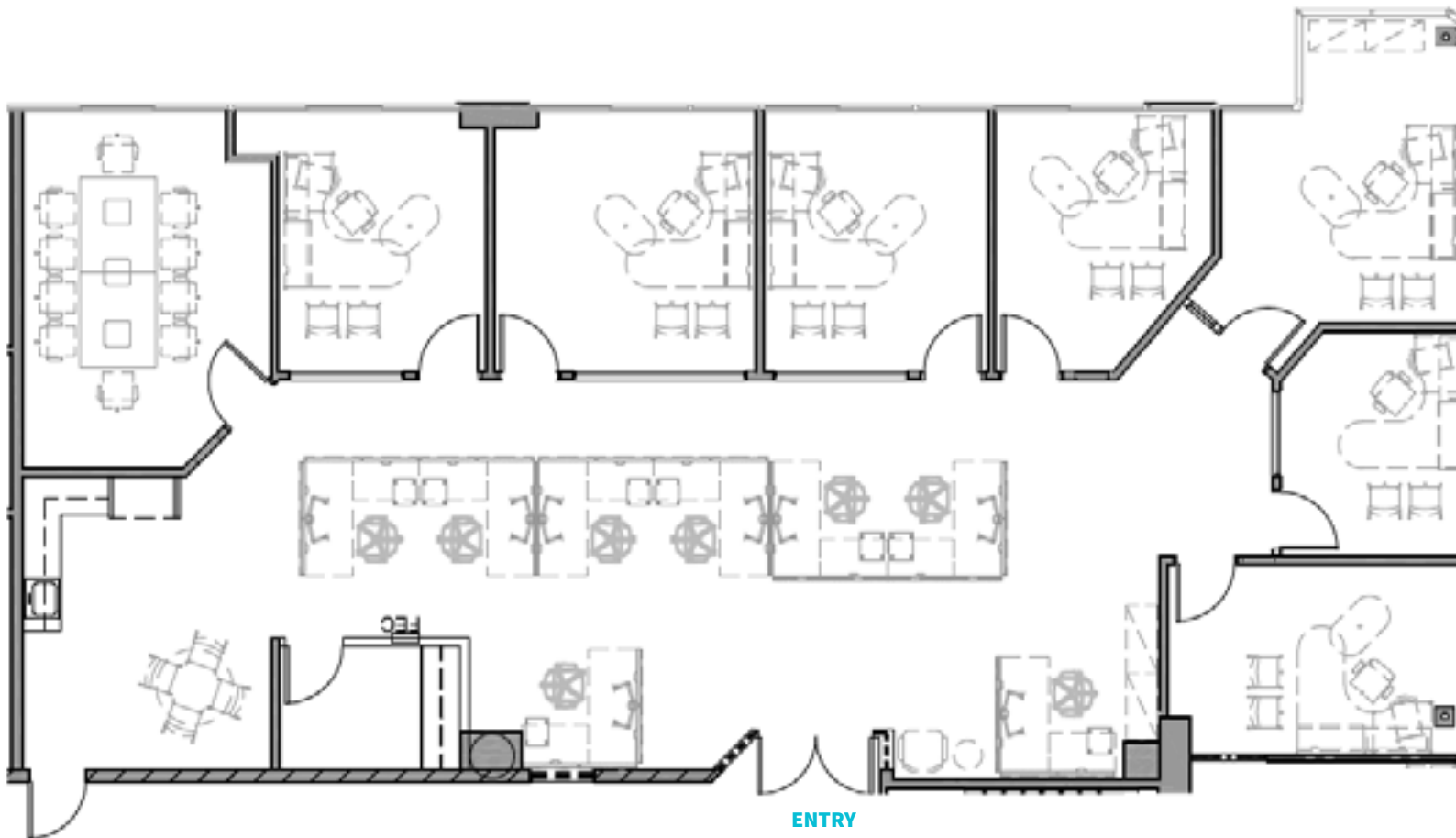
3366 N. Torrey Pines Court | **Third floor**
Suite 310 - 3,493 sf | available now

- 5 offices
- Large conference room
- Small conference room
- Open area for cubicles
- Kitchen
- Polished concrete to the open area and kitchen
- Ocean views - see photos on next page
- Furniture not included

↑ West

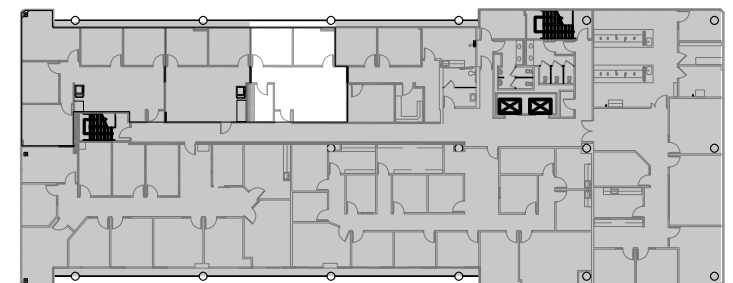
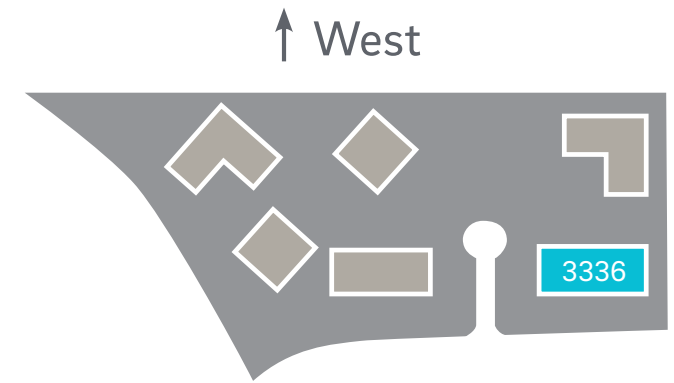
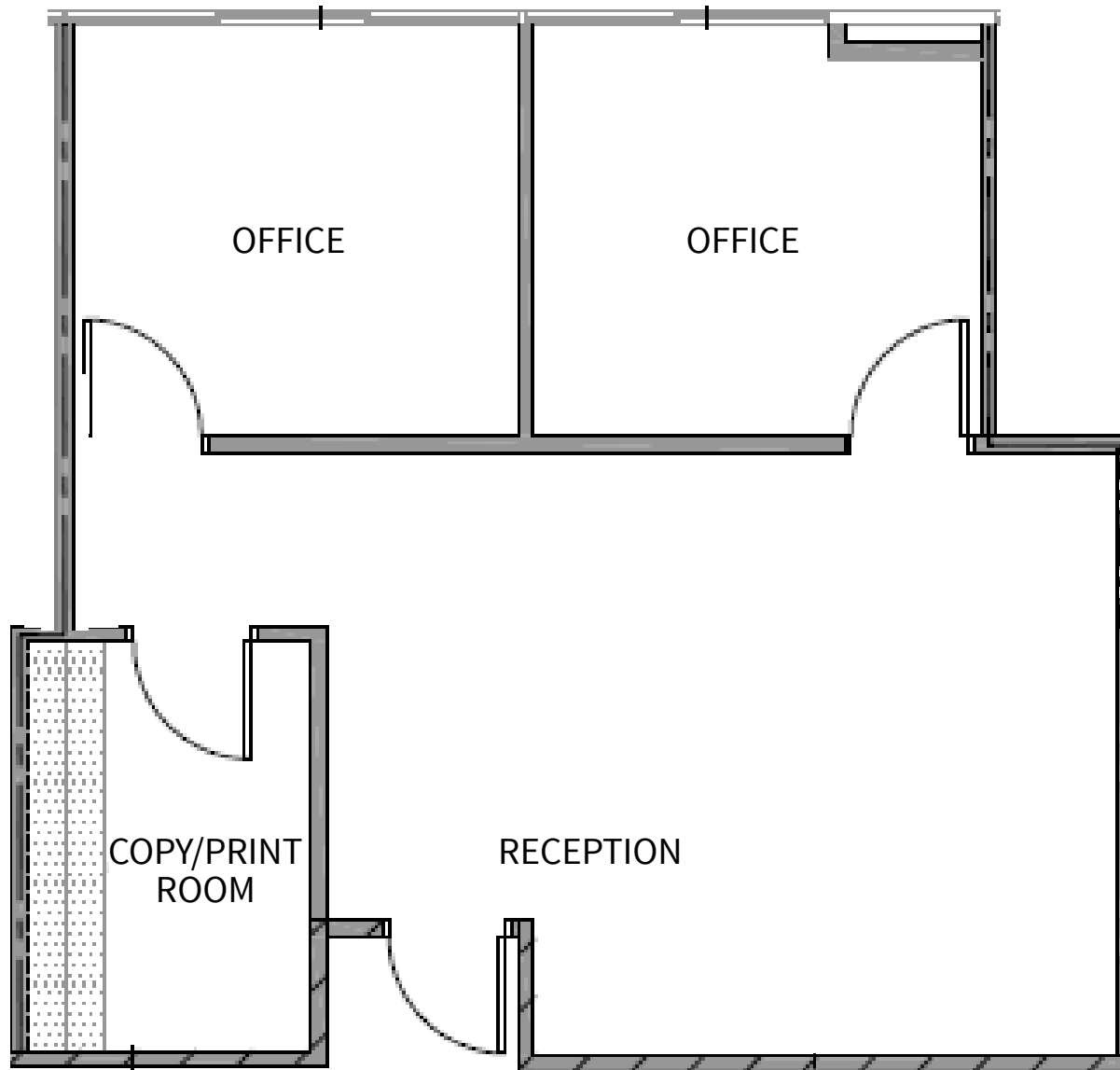


Suite 310 | [Ocean view photos](#)



3366 N. Torrey Pines Court | **Third floor**
Suite 318 - 950 sf | available now

- 2 offices
- Copy/print room
- Reception

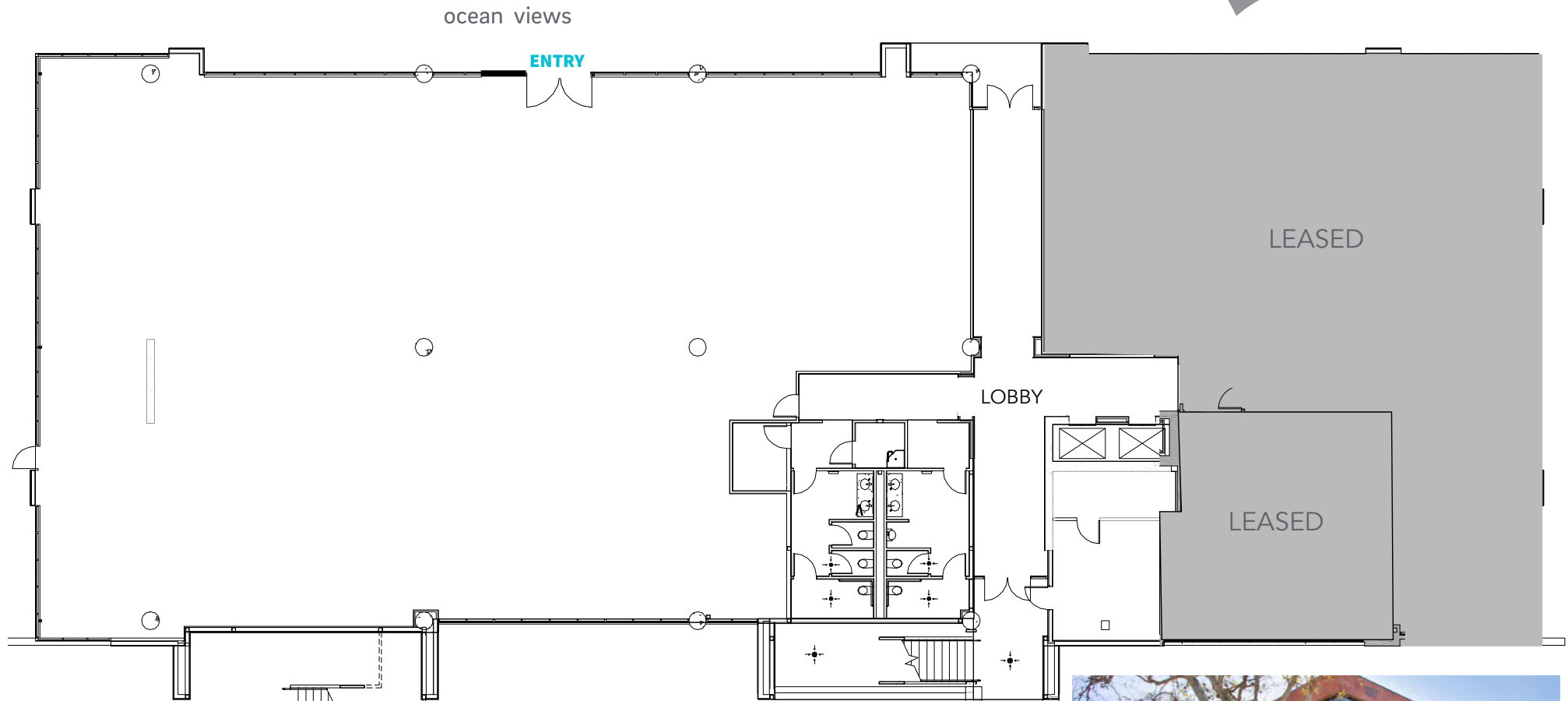
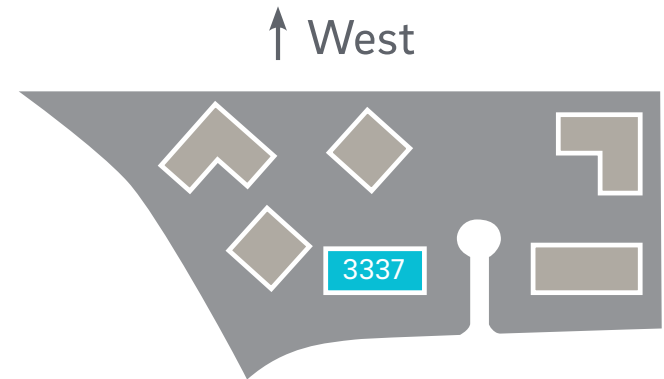


3377 N. Torrey Pines Court | **First floor**

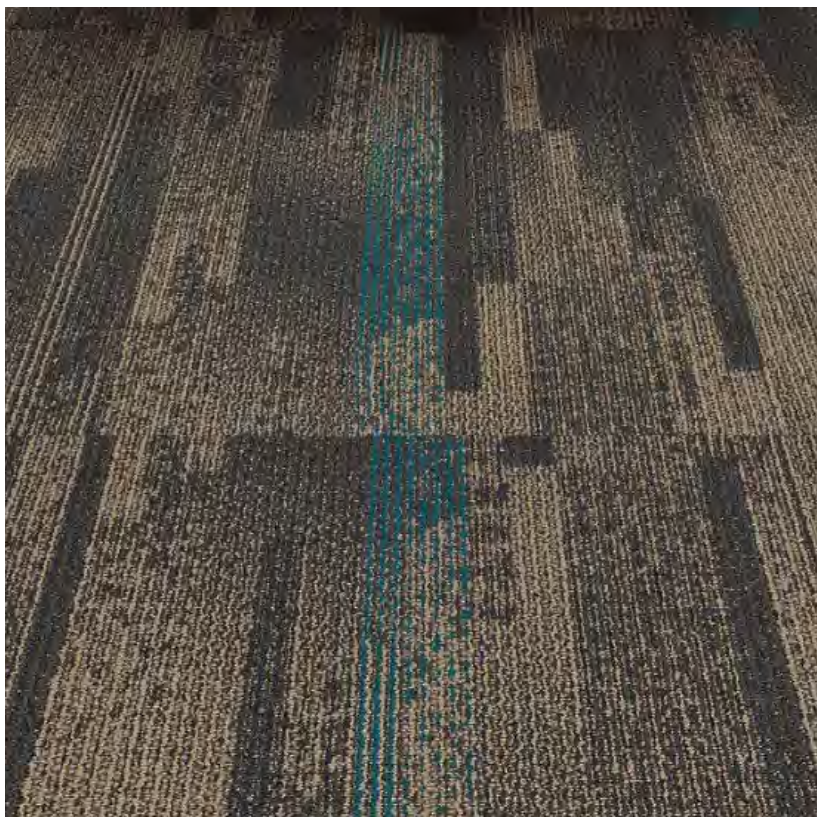
Suite 150 - 9,095 sf | available now

- Shell Condition - potential creative space
- Direct entry from building exterior
- Ocean views

[Take a Virtual Tour - 3377 #150](#)



Spec Suite Finishes



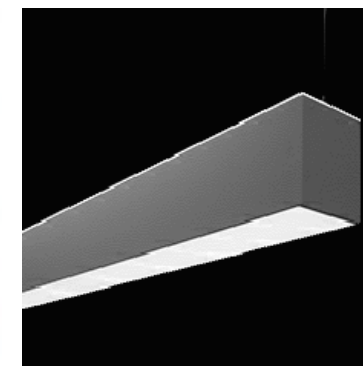
CARPET



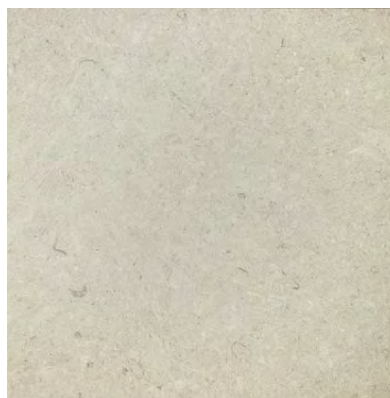
ENTRY CHANDELIER



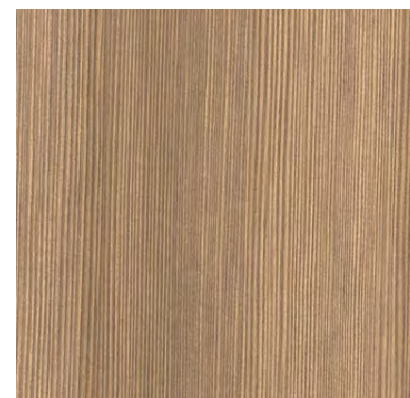
ISLAND PENDANT



GENERAL LIGHTING



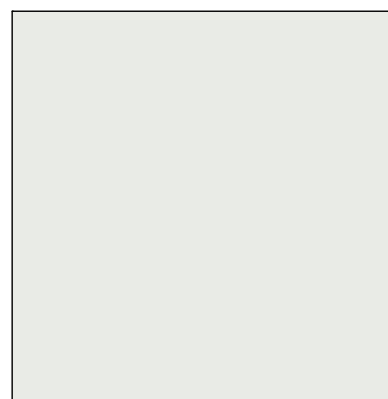
SOLID SUFACE COUNTERTOP



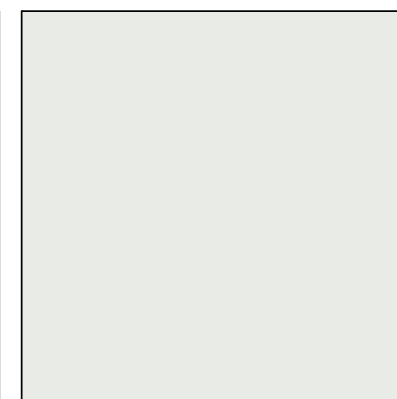
MILLWORK LAMINATE



TILE BACKSPLASH



FIELD PAINT



WALL BASE



Tim Olson
858.410.1253
tim.olson@jll.com
RE lic. #01364117

Greg Moore
858.410.6367
greg.moore@jll.com
RE lic. #02068852

Although information has been obtained from sources deemed reliable, neither Owner nor JLL makes any guarantees, warranties or representations, express or implied, as to the completeness or accuracy as to the information contained herein. Any projections, opinions, assumptions or estimates used are for example only. There may be differences between projected and actual results, and those differences may be material. The Property may be withdrawn without notice. Neither Owner nor JLL accepts any liability for any loss or damage suffered by any party resulting from reliance on this information. If the recipient of this information has signed a confidentiality agreement regarding this matter, this information is subject to the terms of that agreement. ©2025.Jones Lang LaSalle IP, Inc. All rights reserved.