

# River Vale Center

673-675 Westwood Avenue, River Vale, NJ



**2,100 SF Available for Lease**

**David Townes**

Managing Director

+1 917 993 5515

david.townes@jll.com

**Alana Friedman**

Vice President

+1 201 741 0990

alana.friedman@jll.com





## Property Location

- » Retail space for lease in downtown River Vale located in the Central Bergen Submarket
- » Dedicated parking lot located behind the building

## Retail Availability

- » 2,100 SF available for lease

- » Divisible

### Asking Rent

- » Upon request

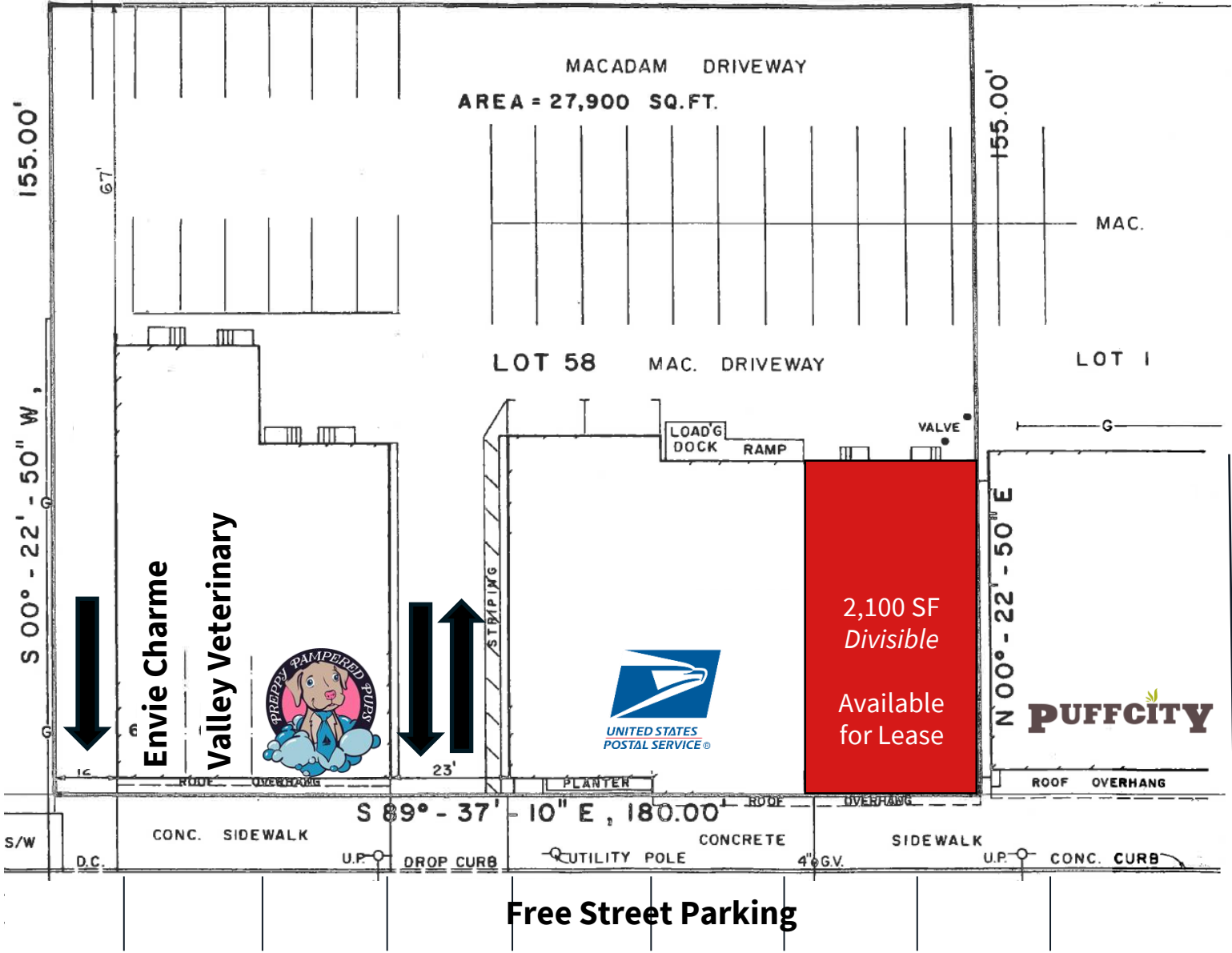
### NNN Charges

- » \$7.00 PSF

## Trade Area Co-Tenants

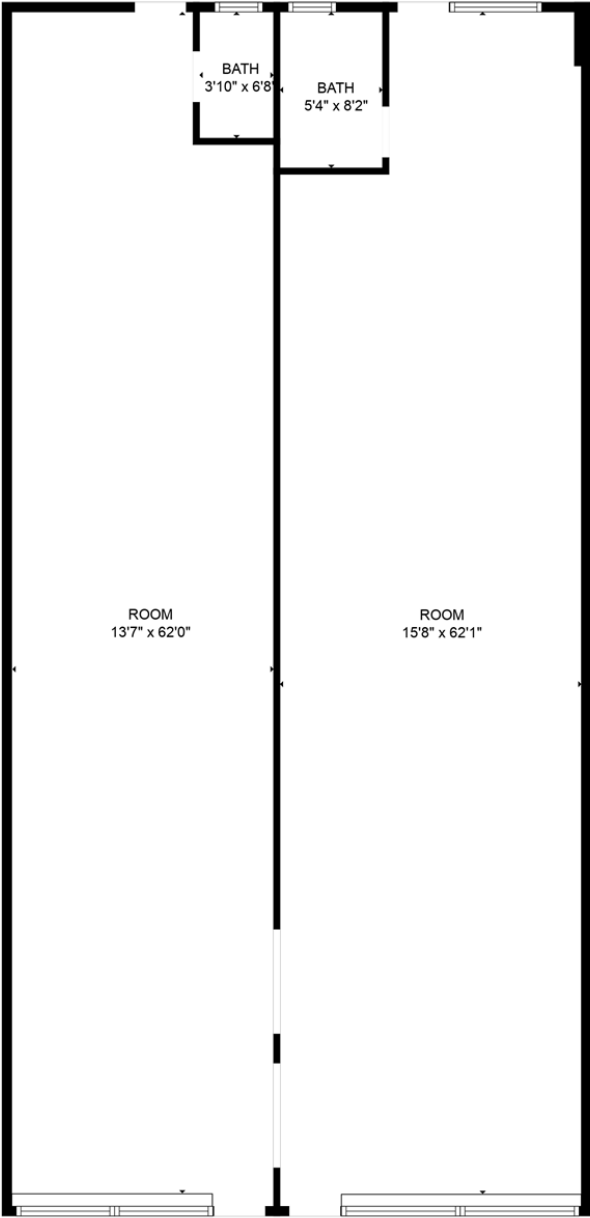


Site Plan





# Floor Plan





## Photos





673-675 Westwood Ave, River Vale, NJ

# Market Aerial



## Demographics



**78,081**  
Population



**\$145,021**

Med. HH Income



**26,532**

Employees



**4,005**

Businesses

Demographics taken within 3 miles Source:  
Costar 2024

### For more information contact:

**David Townes**  
Managing Director

+1 917 993 5515  
david.townes@jll.com

**Alana Friedman**  
Vice President

+1 201 741 0990  
alana.friedman@jll.com

Although information has been obtained from sources deemed reliable, JLL does not make any guarantees, warranties or representations, express or implied, as to the completeness or accuracy as to the information contained herein. Any projections, opinions, assumptions or estimates used are for example only. There may be differences between projected and actual results, and those differences may be material. JLL does not accept any liability for any loss or damage suffered by any party resulting from reliance on this information. If the recipient of this information has signed a confidentiality agreement with JLL regarding this matter, this information is subject to the terms of that agreement. ©2024. Jones Lang LaSalle IP, Inc. All rights reserved.