

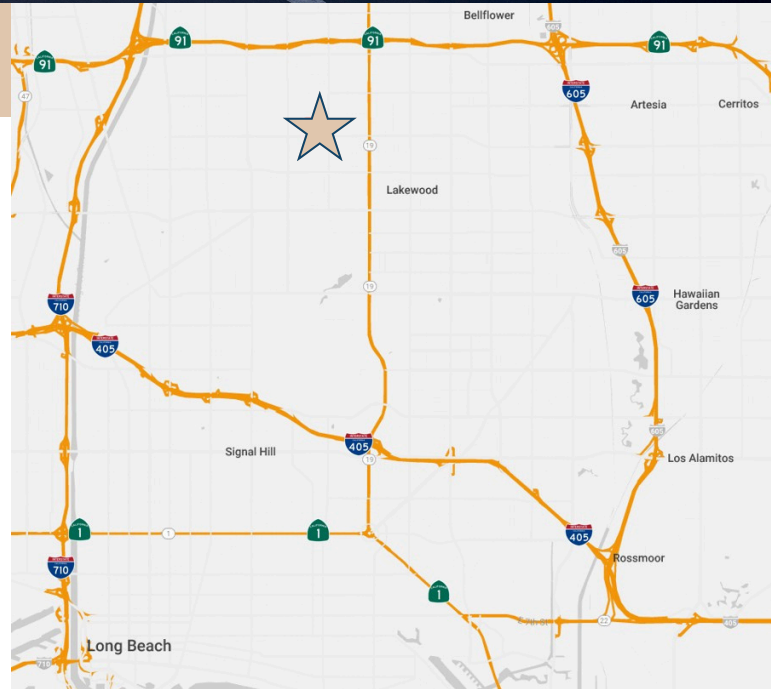
3117 E. SOUTH STREET
LONG BEACH, CA

±22,309 SF
FOR SUBLEASE



PROPERTY FEATURES

- » ±22,309 SF of Land
- » ±4,223 SF Building with Warehouse/Office Space
- » 2 Ground Level Loading Doors
- » Fenced Fenced, Paved, and Secured Yard
- » Light Industrial Zoning (LBIL)
- » Professionally Owned and Managed by CenterPoint Properties
- » Close Proximity to 91, 605, 710 and 405 Freeways
- » Central Location to Downtown Los Angeles, Orange County, and Beach Cities
- » Located ~14 Miles From the Port of Long Beach



RUSTIN MORK

Senior Managing Director
rustin.mork@jll.com
+1 213 239 6181
RE License #01448642

MARK VANIS

Managing Director
mark.vanis@jll.com
+1 949 278 7807
RE License #01856260

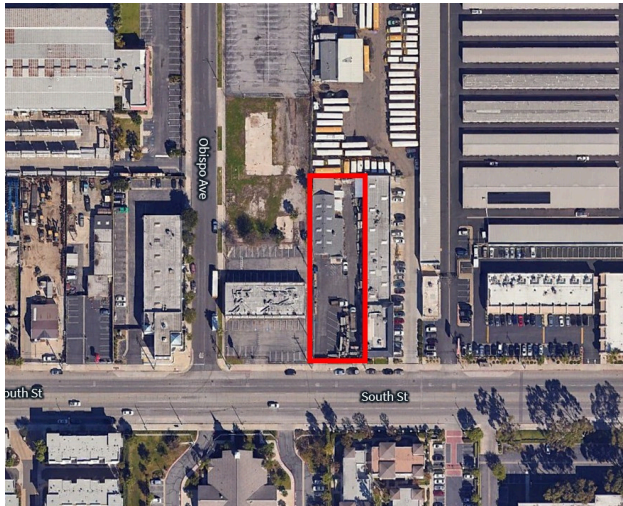
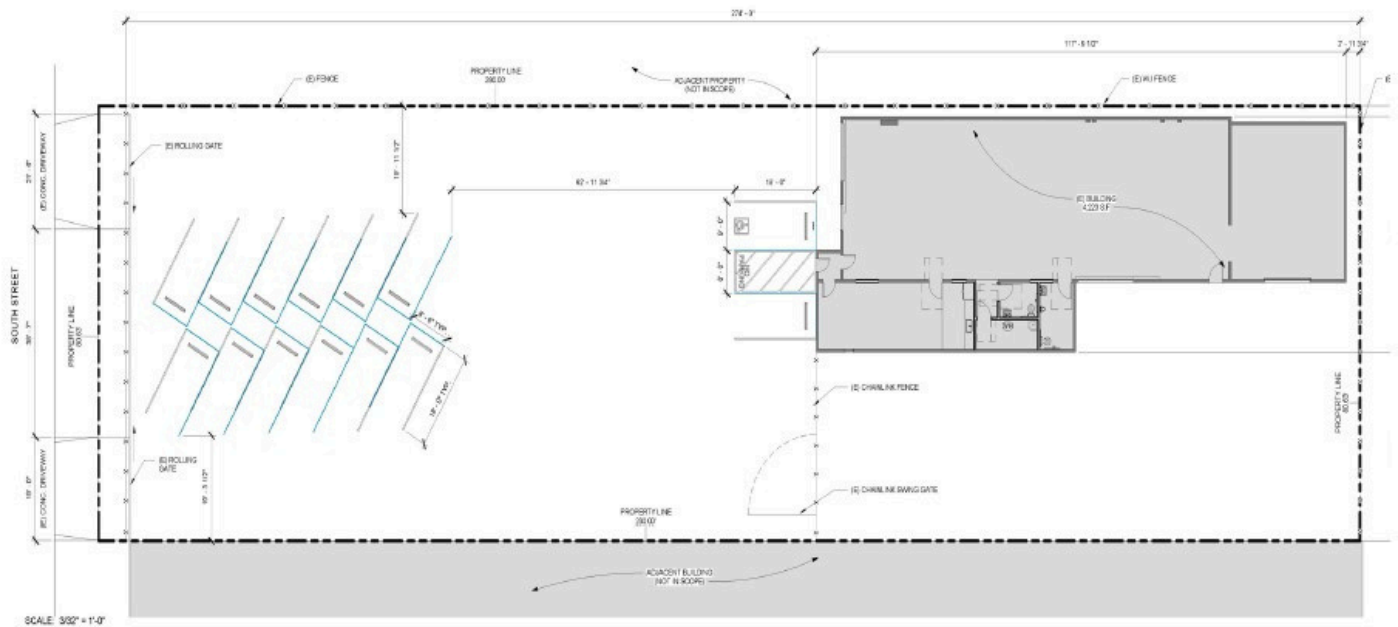
CELINA CHHUON-ROMERO

Senior Associate
celina.chhuon-romero@jll.com
+1 909 467 6868
RE License #02249849

3117 E. SOUTH STREET
LONG BEACH, CA

±22,309 SF
FOR SUBLEASE

SITE PLAN



RUSTIN MORK

Senior Managing Director
rustin.mork@jll.com
+1 213 239 6181
RE License #01448642

MARK VANIS

Managing Director
mark.vanis@jll.com
+1 949 278 7807
RE License #01856260

CELINA CHHUON-ROMERO

Senior Associate
celina.chhuon-romero@jll.com
+1 909 467 6868
RE License #02249849