



**PwC**  
PLAZA





# CONNECTED

PwC Plaza is an iconic 19-story, 330,096 square-foot Class A boutique office tower that sits atop the 17-story Royal Sonesta luxury hotel. PwC Plaza is centrally located on 7th Street, just steps from Nicollet Mall and surrounded by all the best the Minneapolis CBD and Entertainment district has to offer.



PREMIER, CENTRAL  
LOCATION



RECENTLY  
RENOVATED LOBBY &  
SKYWAY AMENITIES



BEAUTIFUL DOWNTOWN  
AND UNOBSTRUCTED  
VIEWS



OFF-CENTER SIDE  
CORE FLOOR PLATES



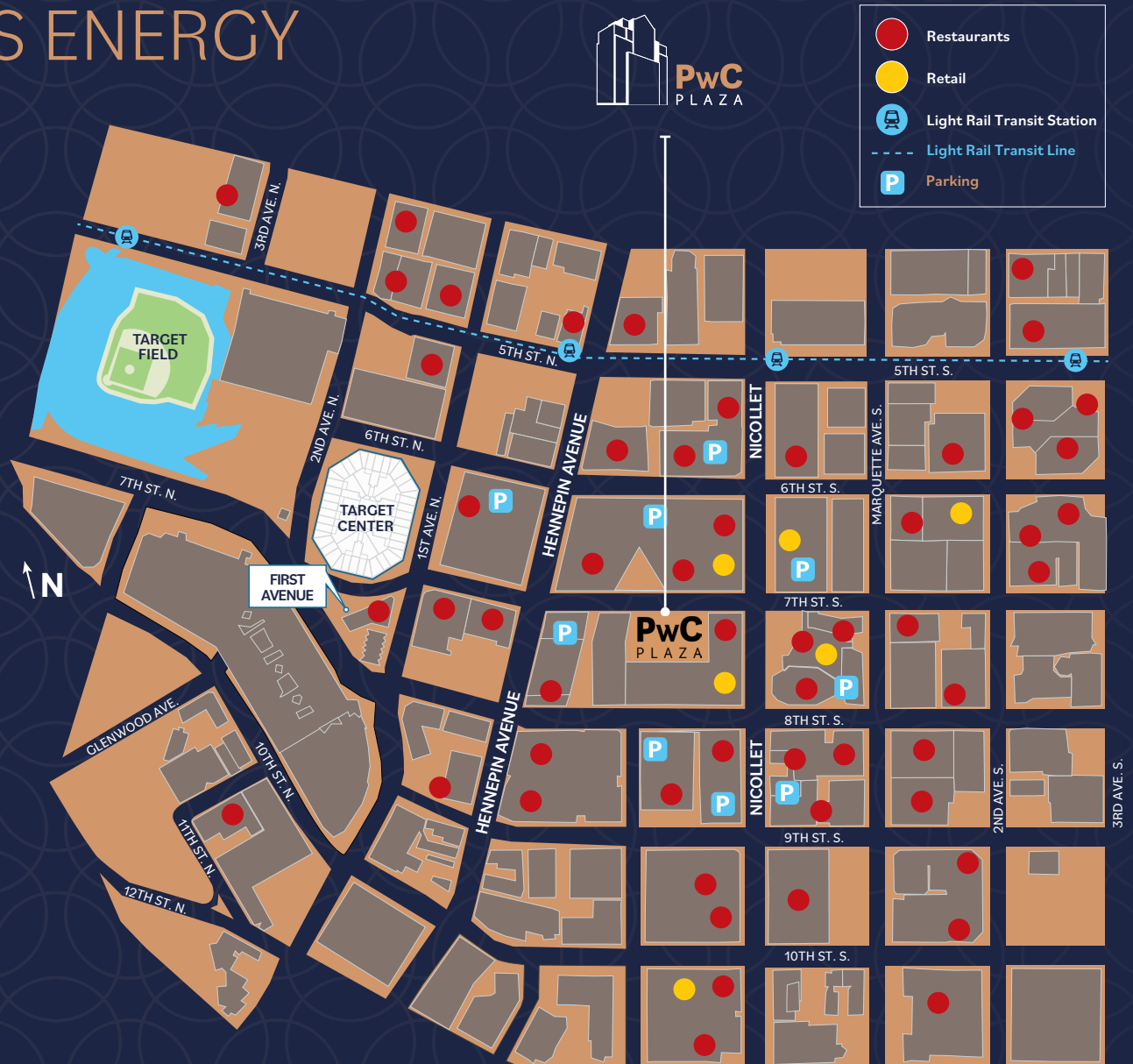




# CONNECT TO DOWNTOWN'S ENERGY

At the center of the Minneapolis skyway system, located on the Wolves Skyway Route with extended hours during Target Center Events, employees are connected to all the local dining, shopping and entertainment.

With close proximity to Target HQ, PwC Plaza is ideal for Target vendors.





	WALK
TARGET CENTER	4 min
FIRST AVENUE	4 min
RAMP A	5 min
TARGET FIELD	7 min
NORTH LOOP	14 min
MISSISSIPPI RIVER	21 min





# CONNECT WITHIN A SKYWAY AWAY

Walk over to your favorite restaurants for a quick lunch with coworkers, then go to happy hour before heading to the parking garage.

Run errands during your workday by popping over to UPS or the bank.

WELLS FARGO

usbank

ups DROP BOX

T-Mobile

St CROIX  
CLEANERS

NY JEWELRY

WOOD + PADDLE  
eatery

TOM'S  
WATCH BAR

Huntington

GNC  
GENERAL NUTRITION CENTERS

FedExOffice  
Print & Ship Services

charles SCHWAB

BREMER  
BANK

BANK OF AMERICA

SUBWAY









## 2ND FLOOR AMENITIES

ON-SITE MANAGEMENT OFFICE  
STATE-OF-THE-ART TRAINING ROOM  
TENANT LOUNGE WITH FREE COFFEE  
CONNECTION TO CBD  
SKYWAY SYSTEM

## 1ST FLOOR AMENITIES

UNDERGROUND PARKING  
24/7 SECURITY



# CONNECT TO HOSPITALITY



- Office Floors 18-36
- 360 degrees of unobstructed views
- Uniquely efficient offset, sidecore floorplates

## 17TH FLOOR AMENITY

FULL-SERVICE SECURED  
FITNESS CENTER

## The ROYAL SONESTA

- 360 luxury hotel suites
- 30,000 SF of meeting and event space
- Wood + Paddle Eatery



# CONNECT TO MODERN AMENITIES

PwC Plaza offers tenants a variety of modern spaces to collaborate, relax and entertain.



PwC Plaza's new tenant lounge, The Meridian Room, is where energy flows and employees can

take a break, work, grab a cup of coffee or host a client.

## TRAINING AND IDEATION ROOM

Equipped with access to today's most innovative technology providing tenants seamless collaboration between in-office and remote employees.







## On site Royal Sonesta Hotel AMENITIES AVAILABLE FOR TENANT USE:



30,000 SF  
EVENT CENTER



WOOD + PADDLE,  
A FARM-TO-TABLE  
RESTAURANT



FULL-SERVICE  
SECURED FITNESS  
CENTER

## ADDITIONAL FEATURED AMENITIES



ON-SITE 24/7  
SECURITY



ON-SITE PARKING  
WITH GUEST  
VALIDATION



ON-SITE PROPERTY  
MANAGEMENT











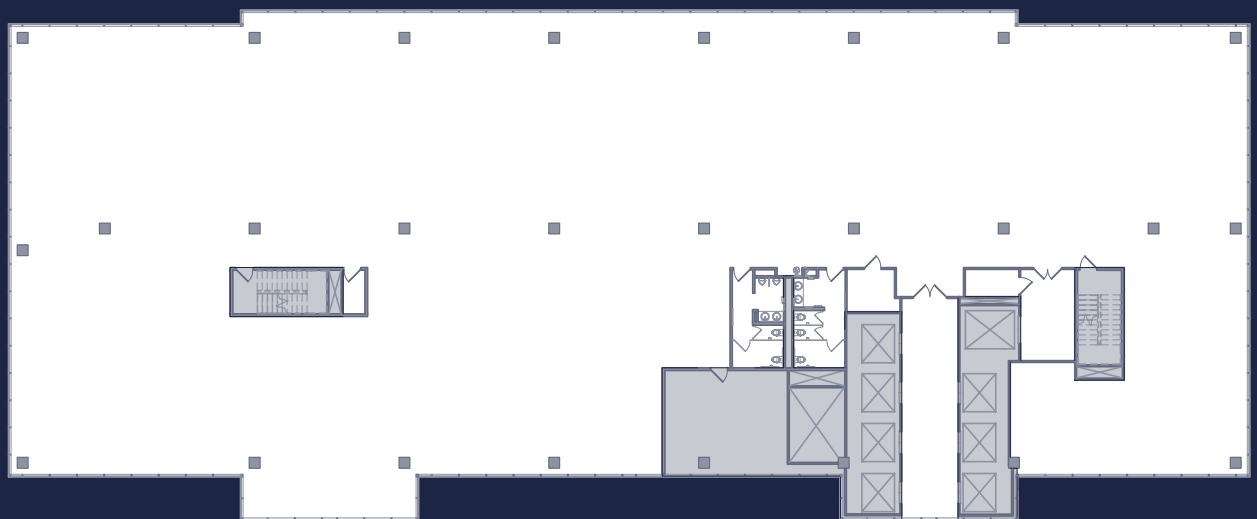




# CONNECT TO UNIQUE SPACES

Featuring unique off-center side-core floor plates, PwC Plaza offers efficient and distinct space plans with convenient direct freight access.

This one-of-a-kind floor plate offers unobstructed views and a truly collaborative work space.







## FOR LEASING INFORMATION, CONTACT

**Brent Robertson**  
+1 612 217 5132  
[brent.robertson@jll.com](mailto:brent.robertson@jll.com)

**Andrea Leon**  
+1 612 217 5142  
[andrea.leon@jll.com](mailto:andrea.leon@jll.com)

**Teig Hutchison**  
+1 612 217 5157  
[teig.hutchison@jll.com](mailto:teig.hutchison@jll.com)

Although information has been obtained from sources deemed reliable, neither Owner nor JLL makes any guarantees, warranties or representations, express or implied, as to the completeness or accuracy as to the information contained herein. Any projections, opinions, assumptions or estimates used are for example only. There may be differences between projected and actual results, and those differences may be material. The Property may be withdrawn without notice. Neither Owner nor JLL accepts any liability for any loss or damage suffered by any party resulting from reliance on this information. If the recipient of this information has signed a confidentiality agreement regarding this matter, this information is subject to the terms of that agreement. ©2022. Jones Lang LaSalle IP, Inc. All rights reserved.

