

FMC Tower Sublease

57,043 SF Available

Full 19th Floor: 25,284 SF

Full 18th floor: 25,303 SF

Partial 11th Floor: 6,546 SF

Sublease Offering

- 50,587 SF of contiguous trophy class office space available in the heart of uCity, walking distance to the University of Pennsylvania and Drexel University.
- 6,456 SF available on the 11th floor: 3,706 SF fit-out completed in 2024 & 2,840 SF in shell condition
- Ability to access Sublandlord's dedicated amenities located on the 19th Floor equipped with a full cafe, food service and conference meeting space
- Cira Green - FMC Tower's unique elevated urban green space positioned 95 feet above ground level, direct views on the 11th Floor

18 & 19 Floors



Separate dedicated lobby and secured entrance



Knoll - like new furniture can be made available



Adjacent public parking garage with 1,600+ spaces and bike racks



Floor to ceiling window line with 360° unobstructed views

11th Floor



LEED-based sustainable design

Property Floorplans

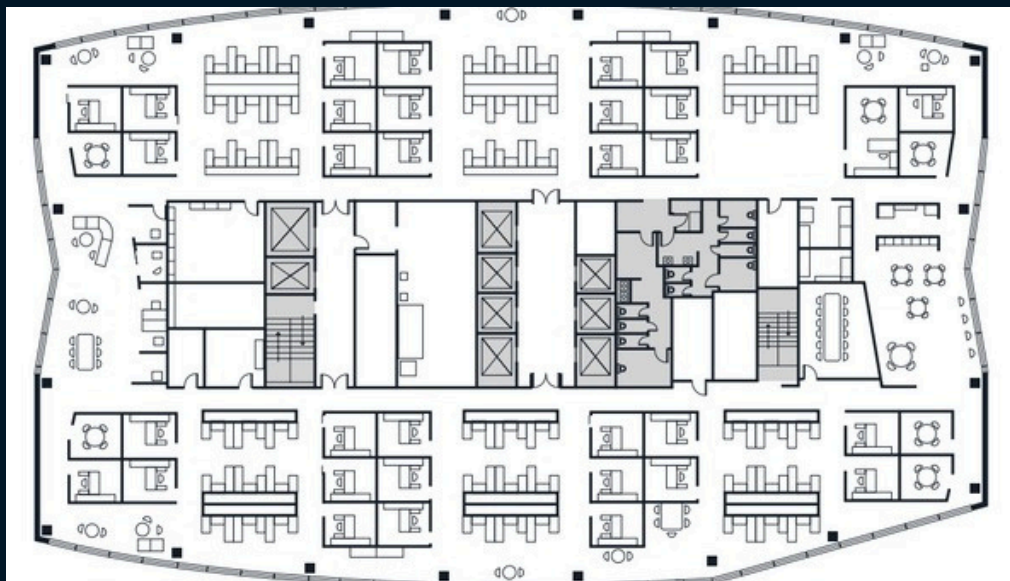
19th Full Floor

25,284 RSF Plug-and-Play
Office Fit-out



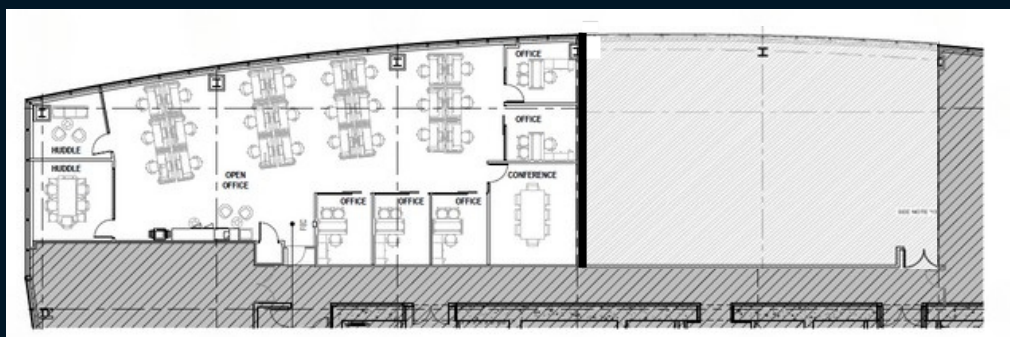
18th Full Floor

25,303 RSF Plug-and-Play
Office Fit-out



11th Partial Floor

3,706 RSF Office Fit-out
completed in 2024
2,840 RSF in shell condition



*Separated by demising wall

28th Floor: 25,000 SF of Trophy Class Amenities

Work and entertain with ease using the tech-equipped business center, 16-seat movie theater, and indoor 3D golf simulator. Stay well with a state-of-the-art fitness center featuring Technogym equipment, a multipurpose studio, and a 72-foot pool, complemented by a wellness center with water therapy, aromatherapy, and locker rooms with towel service.



John Leubecker
Managing Director
John.Leubecker@JLL.com
+1 215 988 5529

Kevin Maloney
Managing Director
Kevin.Maloney@JLL.com
+1 215 399 1833

Regan Rich
Associate
Regan.Rich@JLL.com
+1 484 790 1909

JLL | Jones Lang Lasalle Brokerage, Inc.
1700 Market Street Suite 2400
Philadelphia, PA 19103