



Only 6,235 RSF Remaining

# **4625 LAKE PARK BLVD SALT LAKE CITY**

**Jami Marsh**

+1 801 456 9514

jami.marsh@jll.com

**David Nixon**

+1 801 456 9518

david.nixon@jll.com

**Jones Lang LaSalle Brokerage, Inc.**

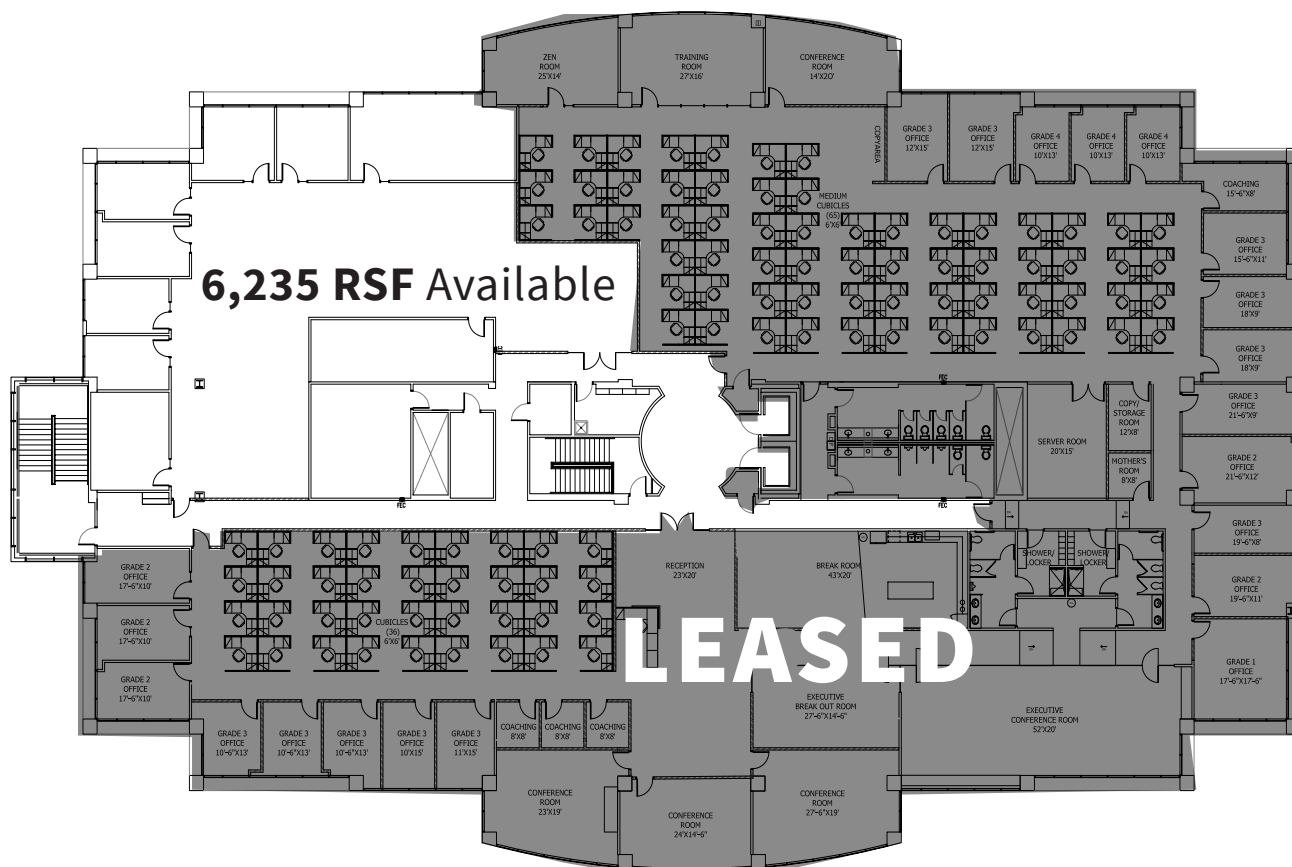


# Property Highlights



- 6,235 RSF Available on Top Floor
- \$22.00 Full Service Gross
- EV Chargers coming soon
- High End Pre-Built Space
- Parking ratio of 4.5/1,000
- Abundant natural light
- Adjacent to 27-hole Stonebridge Golf Course
- Immediate access to Bangerter Hwy, minutes from I-80

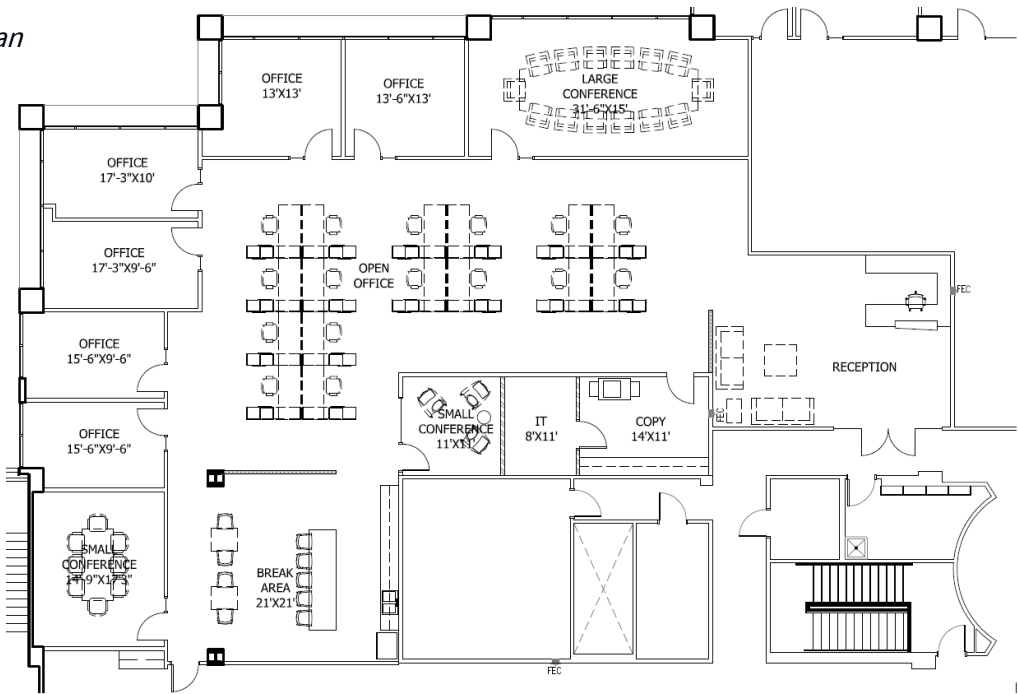
# Third Floor







*Conceptual Floorplan*





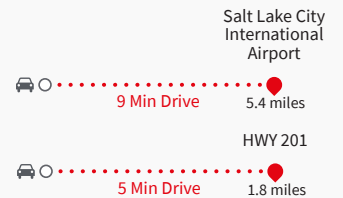
### Area Amenities

- |  |                |
|--|----------------|
| 1. Freddy's Frozen Custard & Steakburgers  | 7. Chick-fil-A |
| 2. Zaxby's Chicken Fingers & Buffalo Wings | 8. Culver's    |
| 3. Popeyes Louisiana Kitchen               | 9. McDonald's  |
| 4. Buffalo Wild Wings                      | 10. Target     |
| 5. Panda Express                           | 11. Walmart    |
| 6. Chili's Grill & Bar                     | 12. Winco      |

### Lake Park Tenants

1. Discover Financial Services
2. Intermountain Healthcare
3. Sutter Health
4. Canon
5. Verizon Wireless
6. Carbonite

### Distance



### Contact information:

**Jami Marsh**  
+1 801 456 9514  
jami.marsh@jll.com

**David Nixon**  
+1 801 456 9518  
david.nixon@jll.com

Jones Lang LaSalle Brokerage, Inc.

©2025 Jones Lang LaSalle LP, Inc. All rights reserved. All information contained herein is from sources deemed reliable; however, no representation or warranty is made to the accuracy thereof.

