



Reagan Logistics Park

NEW CLASS-A INDUSTRIAL

10144 & 10207 Veterans Drive, Avon, IN

www.reaganlogisticspark.com

Building A: 113,400 SF remaining

Building B: 712,800 SF



PARK OVERVIEW



PARK FEATURES



First generation, move-in ready



Ten year tax abatement in place



14 minute drive to FedEx



Sustainably Certified: Green Globes Core and Shell

TENANT OPPORTUNITIES



Signage



Security



Ample parking

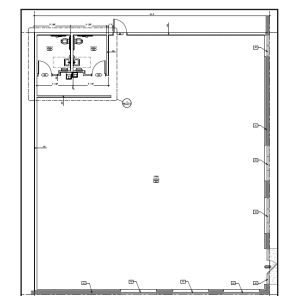
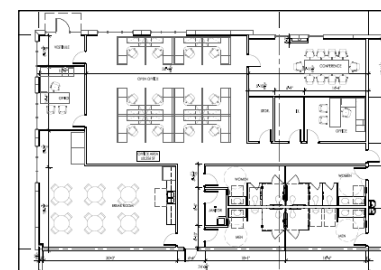


Controlled access

OFFICE SPACE

Building A - 3,556 SF

Building B - 3,238 SF



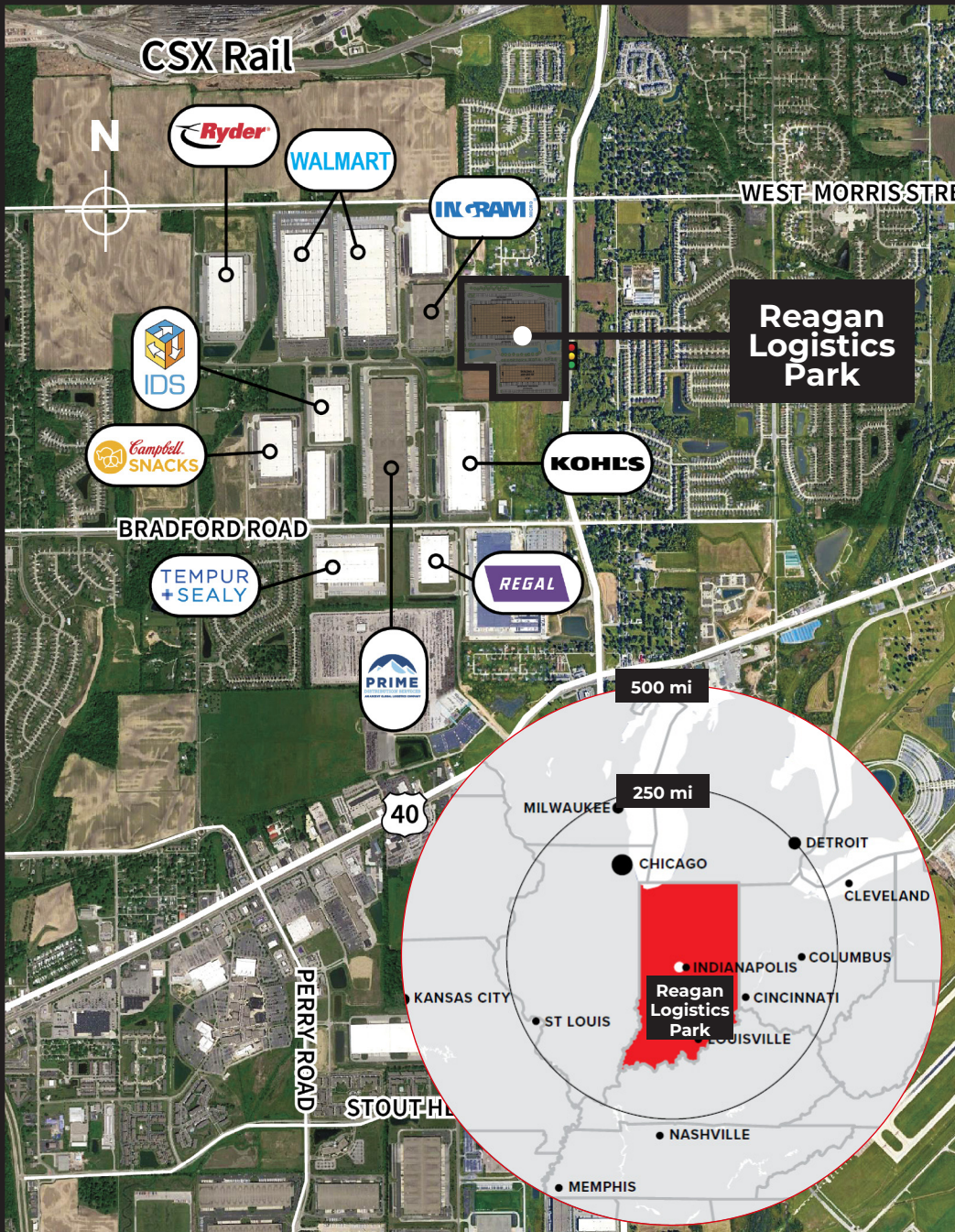


Building B - 10144 Veterans Drive

BUILDING	712,800 SF
OFFICE	3,238 SF
LOADING FACILITIES	Cross dock 96 dock doors (expandable to 159) 48 fully equipped w/ 40,000 lb levelers
DRIVE-IN DOOR	(4) 12' x 14'
BUILDING DEPTH	550'
CLEAR HEIGHT	36'
COLUMN SPACING	54' x 48' typical 60' speed bays
TRAILER PARKING	160 stalls
AUTO PARKING	369 spaces
CONSTRUCTION	Pre-cast concrete
SLAB	7" concrete floors
ROOF	60 mil TPO, 20 yr warranty
SPRINKLER	ESFR
POWER	(2) 2500 Amp, 277/480V, 3 phase
LIGHTING	LED
SUSTAINABILITY	6 EV charging stations

Building A - 10207 Veterans Drive

BUILDING	291,600 SF
AVAILABLE	113,400 SF
OFFICE	3,556 SF under construction
LOADING FACILITIES	Rear load 15 dock doors (expandable to 24) 7 fully equipped w/ 40,000 lb levelers
DRIVE-IN DOOR	(1) 12' x 14'
BUILDING DEPTH	300'
CLEAR HEIGHT	32'
COLUMN SPACING	54' X 48' typical 60' speed bays
TRAILER PARKING	28 stalls
AUTO PARKING	68 spaces
CONSTRUCTION	Pre-cast concrete
SLAB	7" concrete floors
ROOF	60 mil TPO, 20 yr warranty
SPRINKLER	ESFR
POWER	800 amps, 277/480V, 3 phase
LIGHTING	LED



Located in Indianapolis, the “Crossroads of America,”

Reagan Logistics Park is strategically positioned along Ronald Reagan Parkway, which connects I-70 to I-74 and is located 5.5 miles from the Indianapolis airport. This airport is home to the 2nd largest FedEx Express hub, provides direct Asia-Indianapolis freight access, and is the 8th largest air cargo facility nationally.

Hendricks County is one of the largest and most established submarkets in Indianapolis, with nearly 80% of the U.S. population accessible within a 24 hour drive. With such close proximity to the FedEx hub and a major transportation crossroads, **10144 and 10207 Veterans Drive** are unparalleled when it comes to access.



US 40
1.15 mi



Int'l Airport
5.5 mi



I-70
4.5 mi



FedEx Hub
7.3 mi



I-465
5.2 mi



CSX Railyard
3.2 mi

GRANITE
REIT



BELINDA FLORES
Director, Asset Management
469.965.3348
bflores@granitereit.com



BRIAN BUSCHUK
Senior Managing Director
317.810.7180
brian.buschuk@jll.com

STEVE SCHWEGMAN, SIOR
Executive Managing Director
Market Lead - Indianapolis
317.810.7185
steve.schwegman@jll.com

Although information has been obtained from sources deemed reliable, neither Owner nor JLL makes any guarantees, warranties, or representations, express or implied, as to the completeness or accuracy as to the information contained herein. Any projections, opinions, assumptions, or estimates used are for example only. There may be differences between projected and actual results, and those differences may be material. The Property may be withdrawn without notice. Neither Owner nor JLL accepts any liability for any loss or damage suffered by any party resulting from reliance on this information. If the recipient of this information has signed a confidentiality agreement regarding this matter, this information is subject to the terms of that agreement. © 2024. Jones Lang LaSalle IP, Inc. All rights reserved.