

Retail For Lease

1445 John F. Kennedy Blvd.
North Bergen, NJ 07047

3,630 sf available for lease



Alana Friedman

+1 201 741 0990

alana.friedman@jll.com

David Townes

+1 917 993 5515

david.townes@jll.com

Hilary Sievers

+1 212 812 6449

hilary.sievers@jll.com

Property Details

Property Location

- Direct visibility from the heavily-trafficked John F. Kennedy Blvd. (27,253 VPD)
- This property benefits from its location within a retail center featuring a flagship Food Bazaar supermarket

Retail Availability

- 3,630 sf available for lease
- Space is currently subdivided - 2,427 sf occupied by Popeye's and 1,193 sf occupied by the Bagel Co. Spaces can easily be combined or leased separately as demised
- 346 car parking spaces within the center

Asking Rent

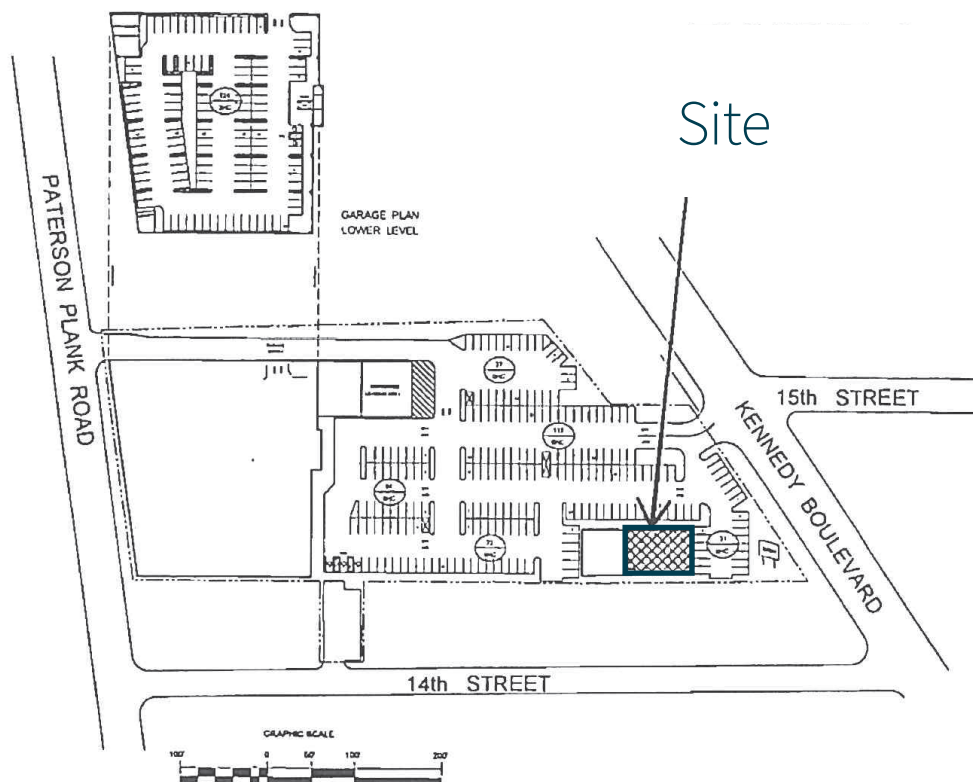
- Available upon request

Trade Area Tenants





Site Plan



Jones Lang LaSalle Brokerage, Inc. | 330 Madison Avenue New York, NY 10017

DISCLAIMER

Although information has been obtained from sources deemed reliable, neither Owner nor JLL makes any guarantees, warranties or representations, express or implied, as to the completeness or accuracy as to the information contained herein. Any projections, opinions, assumptions or estimates used are for example only. There may be differences between projected and actual results, and those differences may be material. The Property may be withdrawn without notice. Neither Owner nor JLL accepts any liability for any loss or damage suffered by any party resulting from reliance on this information. If the recipient of this information has signed a confidentiality agreement regarding this matter, this information is subject to the terms of that agreement. ©2025 Jones Lang LaSalle IP, Inc. All rights reserved.

Market Aerial



Area Demographics

	5-min drive time	10-min drive time	15-min drive time
Total population 2025	61,248	189,173	486,536
Employees	31,167	49,349	244,342
Median HH income	\$68,335	\$85,615	\$98,770