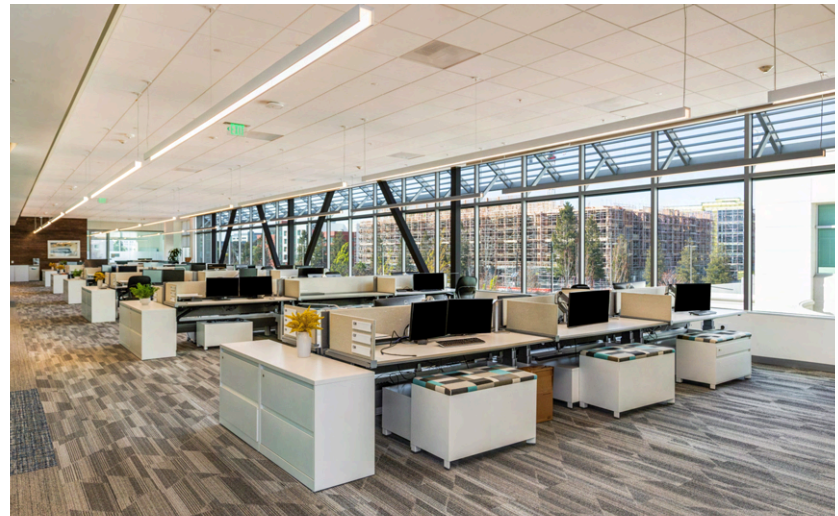




For Sublease

700, 720, 740 Bay Road, Redwood City

± 255,650 SF Divisible to 30,492 SF



Highlights

- State-of-the-art conference facilities
- Lab/Office
- Flexible space designed for scalability and growth
- Onsite café offering convenient dining options
- Landscaped outdoor areas for relaxation and informal meetings
- Versatile layout suitable for single or multi-tenant occupancy
- Direct access to Hwy 101 & El Camino Real
- 20 minute drive to SFO
- Conveniently located near Downtown Redwood City
- LED: 3/31/2027 - Longer term available



1st Floor

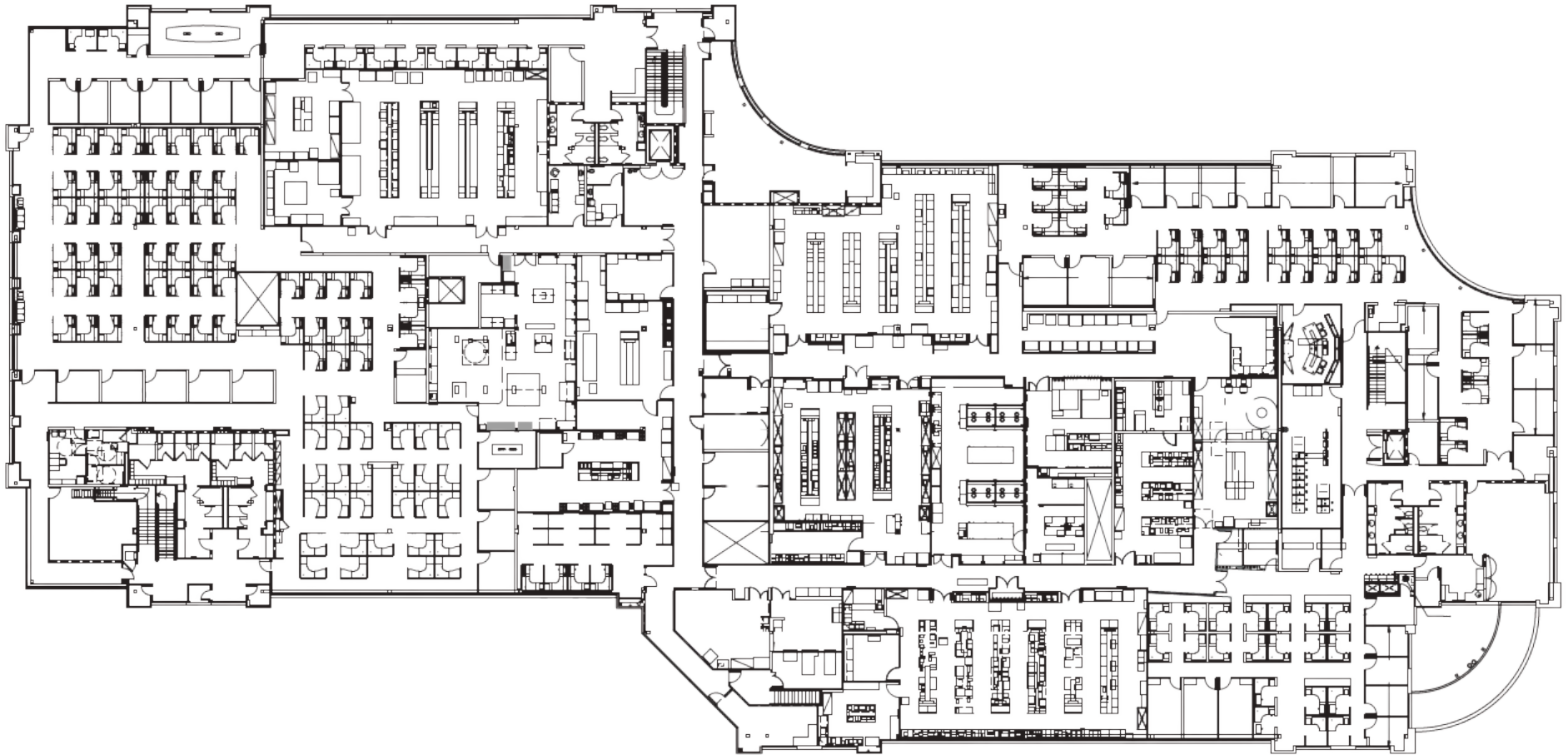
700 Bay Road



Lab Space: 66,561 SF

2nd Floor

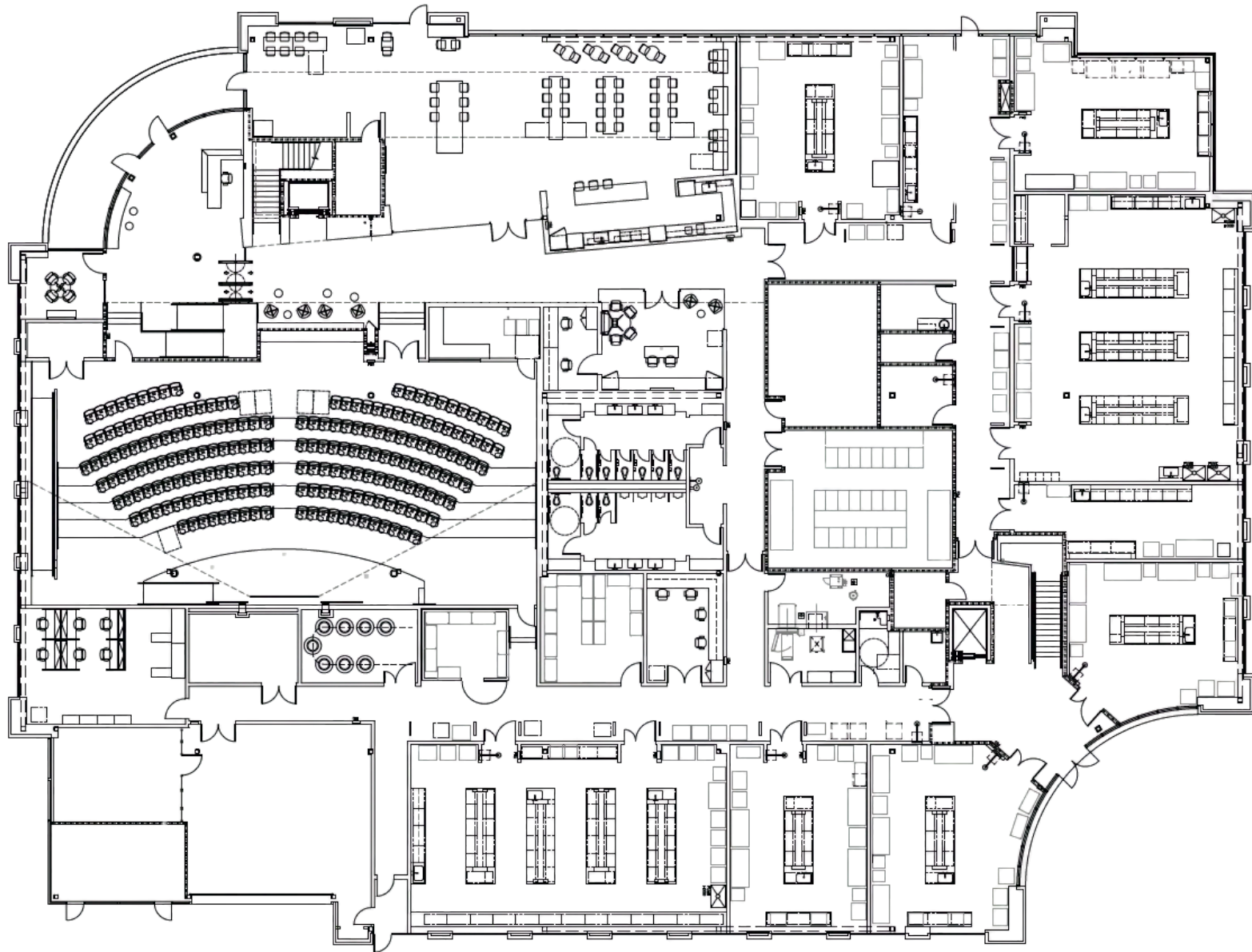
700 Bay Road



Lab/Office Space: 66,562 SF

1st Floor

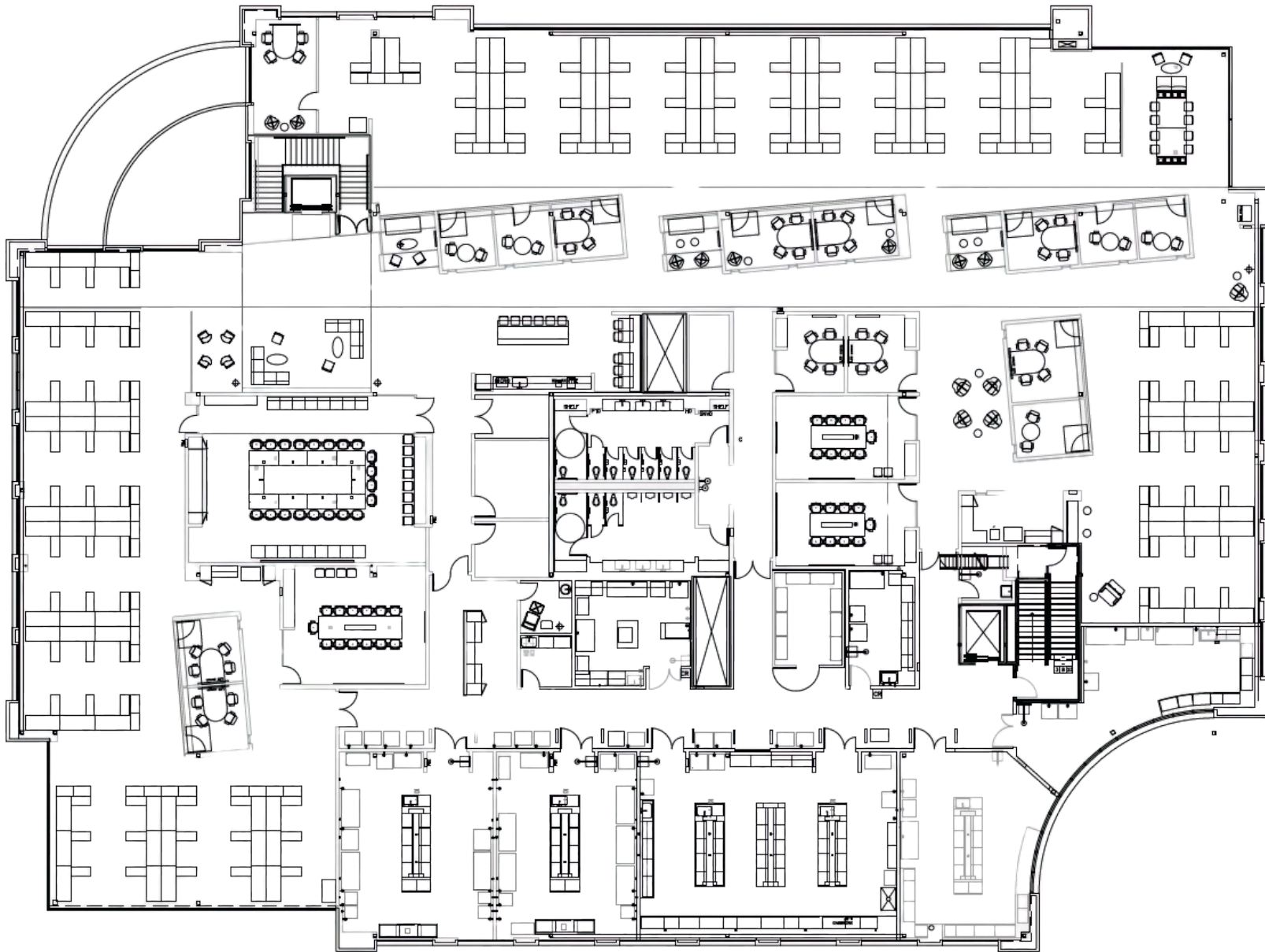
720 Bay Road



Lab/Office Space: 30,771 SF

2nd Floor

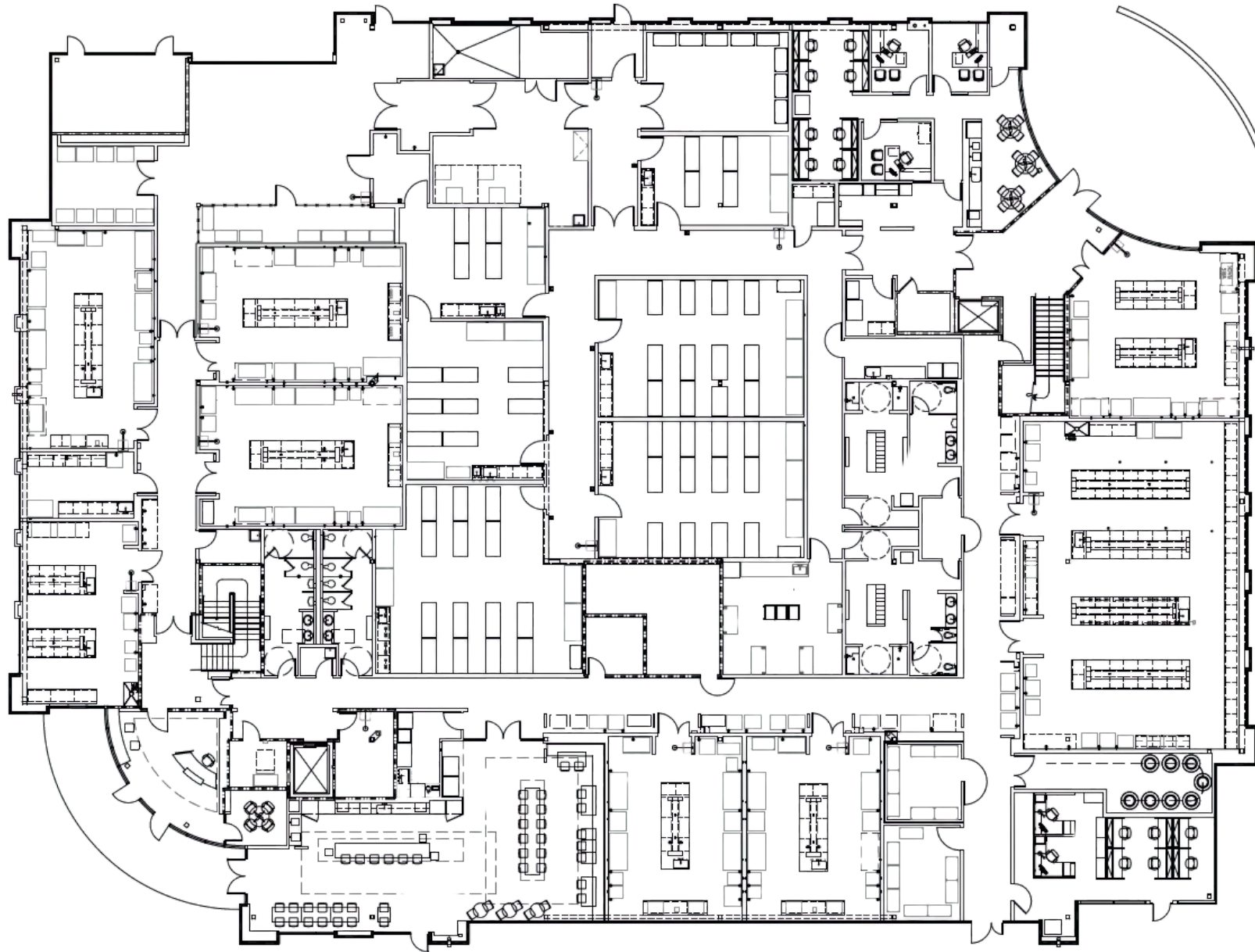
720 Bay Road



Lab/Office Space: 30,771 SF

1st Floor

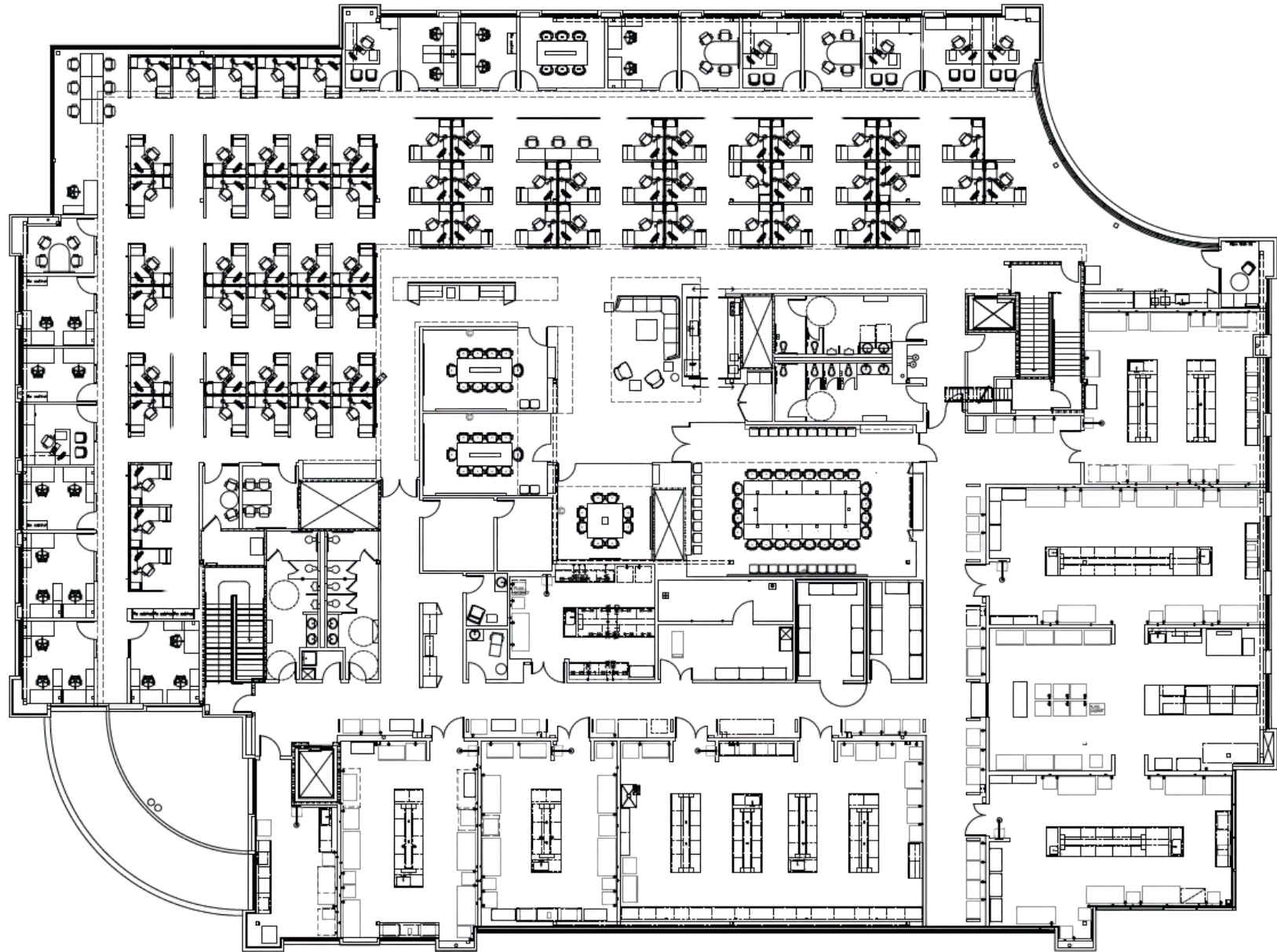
740 Bay Road



Lab/Office Space: 30,492 SF

2nd Floor

740 Bay Road



Lab/Office Space: 30,493 SF

Cole Smith

650.480.2230

Cole.Smith@jll.com

RE Lic. #01948128

Grant Yeatman

858.736.5261

Grant.Yeatman@jll.com

RE Lic. #01972905

Allison Hoffmann

971.645.6127

Allison.Hoffmann@jll.com

RE Lic. #02075868

Emmanuel Enabulele

650.480.2130

Emmanuel.Enabulele@jll.com

RE Lic. #02195583