

Lab/Office for Sublease



2nd Floor Available

± 23,500 SF



900 Chesapeake Drive

Redwood City, CA 94063

Highlights



Full Second Floor \pm 23,500 SF



Former Next Computer First Office With Steve Job Designed Entry Stairwell



LED: Feb 2031



Direct Lease Available



Full Building Expansion Available
(20,974 RSF on Ground Floor)



Parking: 3.0/1,000 RSF



Available for Immediate Occupancy



High Quality Lab Infrastructure



Plug & Play Furniture

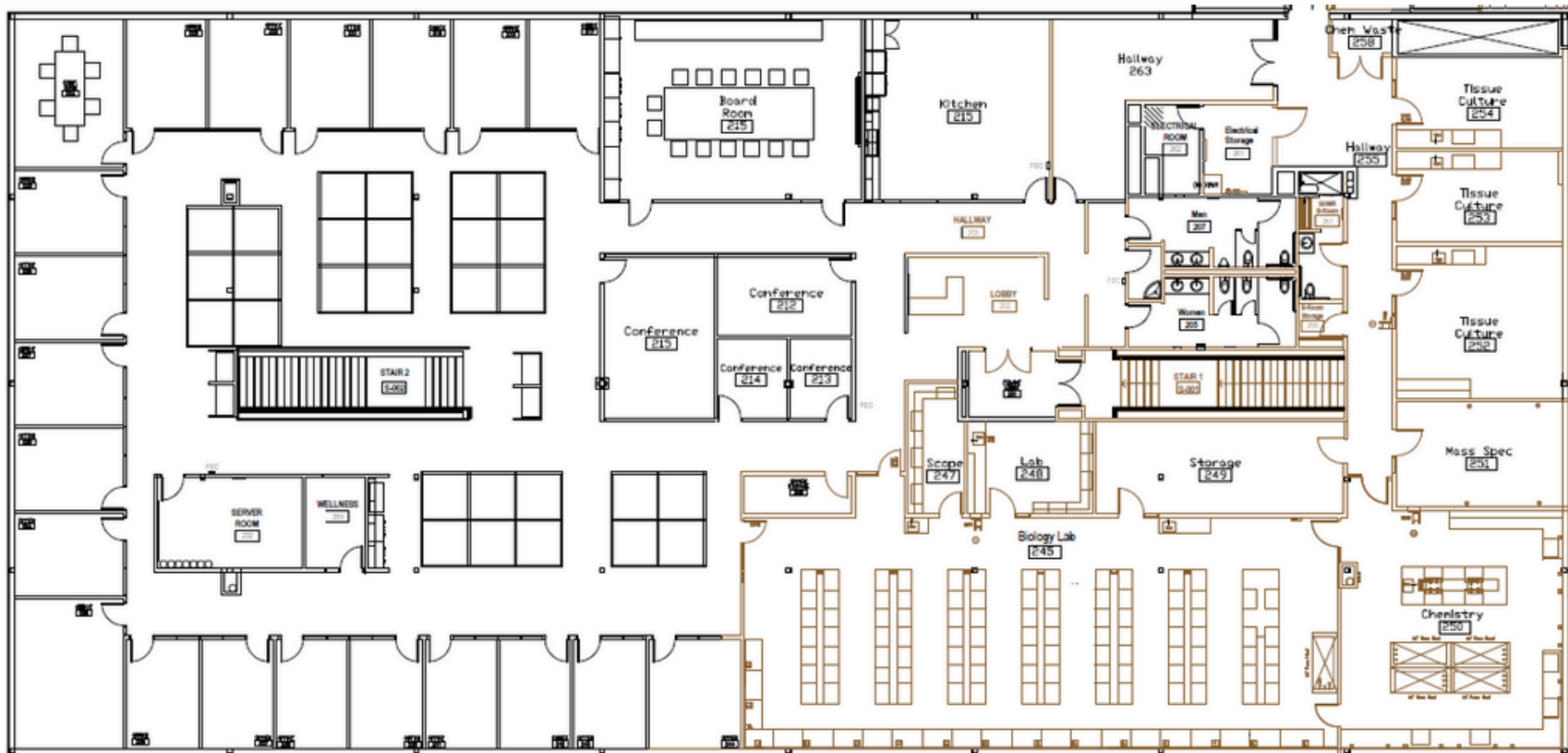


Idyllic San Francisco Bay Setting with Landscaping and Outdoor Trails and Recreation Areas



Floorplan

± 23,500 SF



- 5 Conference Rooms
- Board Room
- 20 Private Offices
- Open Office

- Server Room
- Break Area
- Mother's Room
- Private Lobby

- Biology Lab
- Chemistry Lab
- 3 Tissue Culture Suites
- 5 Chemistry Fume Hoods

Bret Yerkovich

650.867.1646

Bret.Yerkovich@jll.com

RE License #01916826

Allison Hoffmann

971.645.6127

Allison.Hoffmann@jll.com

RE License #02075868