



# 5214 Old Louisville Road

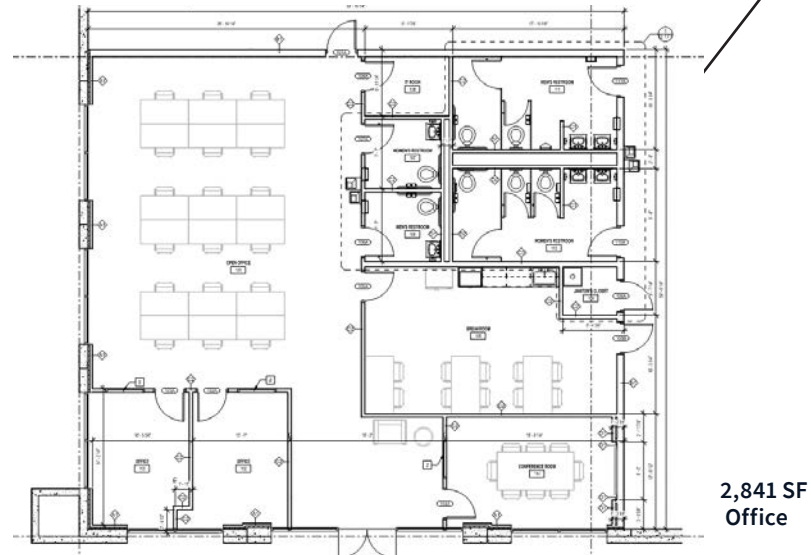
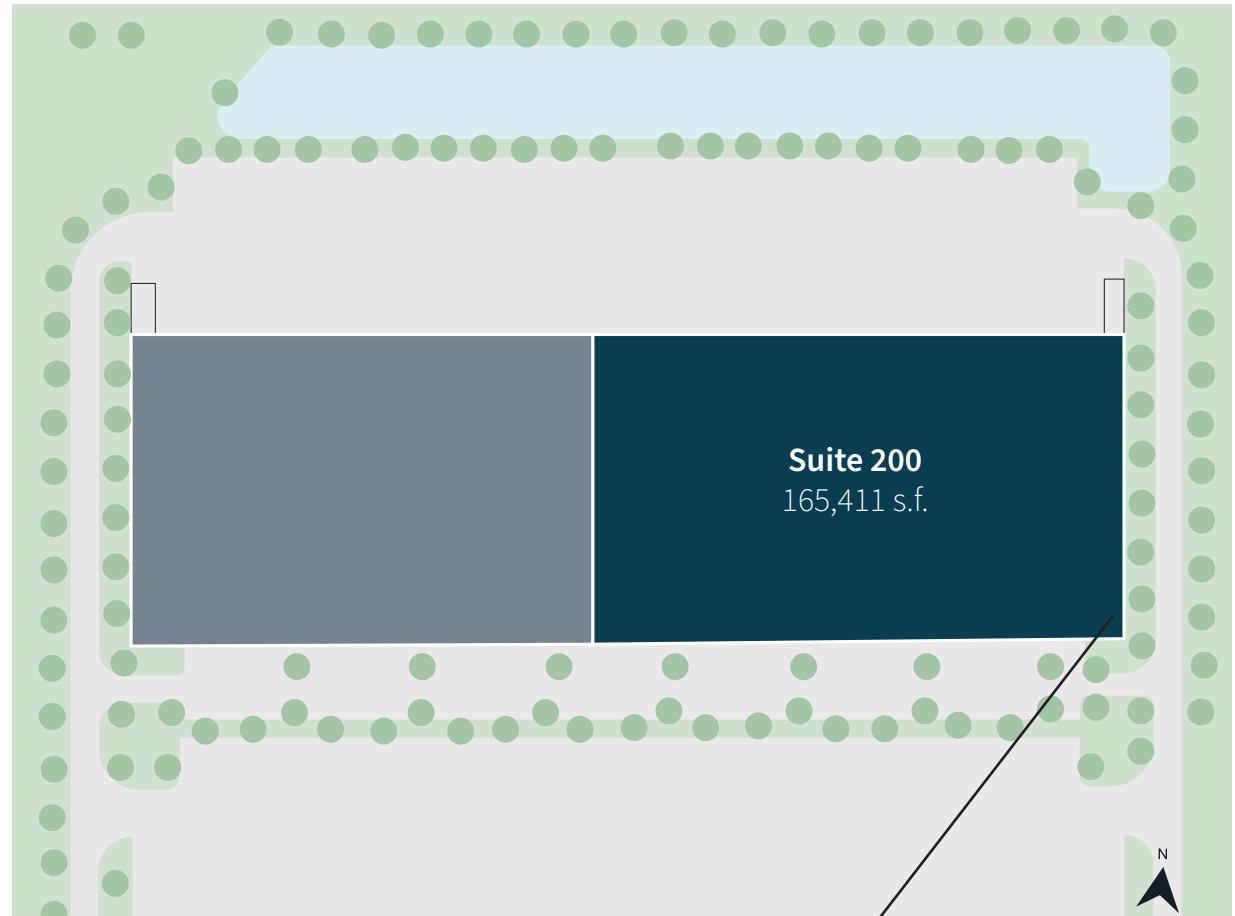
Suite 200  
Savannah, GA 31322

165,411 SF Available for Sublease

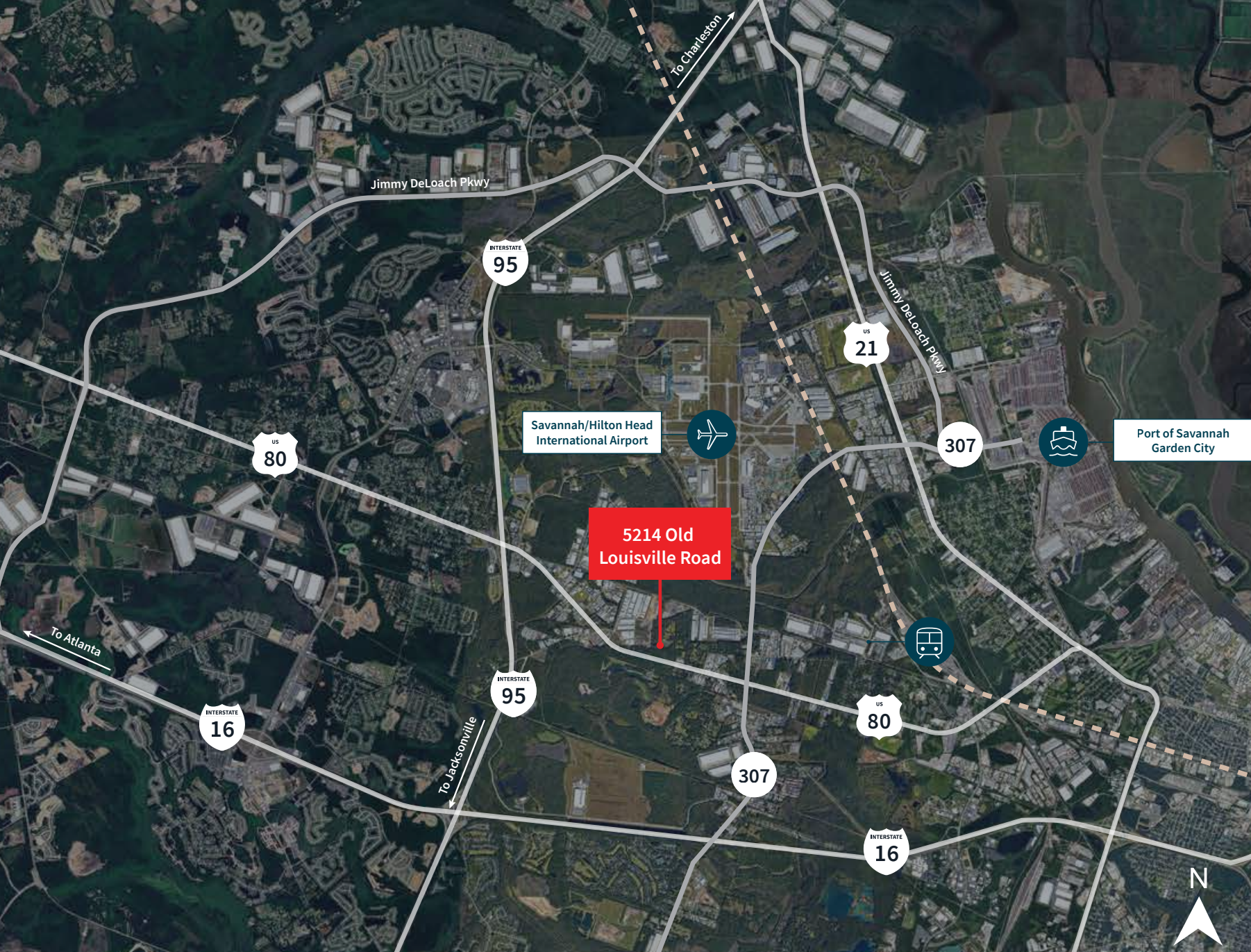


## Property highlights

<b>Sublease term</b>	Until September 1, 2028
<b>Total Building SF</b>	314,288 SF
<b>Suite</b>	200
<b>Available SF</b>	165,411 SF
<b>Office SF</b>	2,841 SF
<b>Clear height</b>	36' minimum
<b>Auto parks</b>	58
<b>Trailer parks</b>	22
<b>Column spacing</b>	+/-53'4" with 60' speed bay
<b>Loading</b>	20 dock doors
<b>Dock equipment</b>	10 doors with 40,000 lb mechanical dock levelers Quad outlets at every other dock door position
<b>Configuration</b>	Rear load
<b>Lighting</b>	30 FC LED lighting at 36" AFF
<b>Sprinkler</b>	ESFR
<b>HVLS Fans</b>	Six (6)
<b>Charging stations</b>	Five (5)
<b>Slab</b>	7" unreinforced, 4,000 PSI with vapor barrier
<b>Power</b>	2,000 AMP service
<b>Roof</b>	60 Mil TPO, R-15 warehouse, R-25 office (5,000 SF on each corner)







#### INTERSTATES

I-95	1.7 miles
I-16	4.3 miles

#### PORT OF SAVANNAH - ACCESS

Garden City Terminal	5.1 miles
----------------------	-----------

#### AIR

Savannah International Airport	4.2 miles
--------------------------------	-----------

#### CITIES

Charleston, SC	109 miles
Jacksonville, FL	134 miles
Atlanta, GA	243 miles





**BENNETT RUDDER, SIOR**  
JLL  
+1 912 250 4595  
[bennett.rudder@jll.com](mailto:bennett.rudder@jll.com)

**LINDSEY WILMOT**  
JLL  
+1 912 663 9394  
[lindsey.wilmot@jll.com](mailto:lindsey.wilmot@jll.com)

**CHRIS TOMASULO, SIOR**  
JLL  
+1 404 995 2462  
[chris.tomasulo@jll.com](mailto:chris.tomasulo@jll.com)

**RYAN HOYT, SIOR**  
JLL  
+1 404 995 2090  
[ryan.hoyt@jll.com](mailto:ryan.hoyt@jll.com)

Although information has been obtained from sources deemed reliable, JLL does not make any guarantees, warranties or representations, express or implied, as to the completeness or accuracy as to the information contained herein. Any projections, opinions, assumptions or estimates used are for example only. There may be differences between projected and actual results, and those differences may be material. JLL does not accept any liability for any loss or damage suffered by any party resulting from reliance on this information. If the recipient of this information has signed a confidentiality agreement with JLL regarding this matter, this information is subject to the terms of that agreement. ©2024 Jones Lang LaSalle Brokerage, Inc. All rights reserved.