



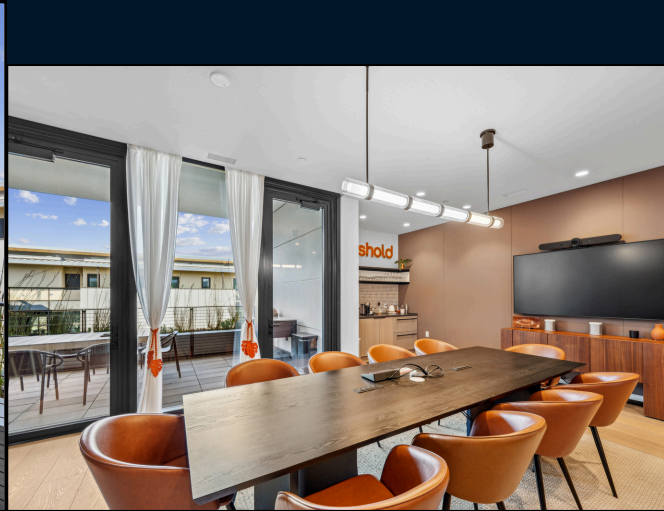
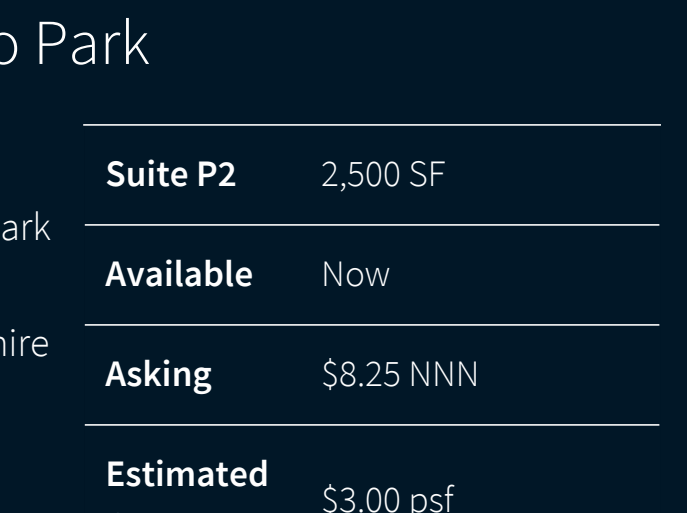
For lease

1125 Merrill Street, Suite P2, Menlo Park

2,500 SF

 **JLL** SEE A BRIGHTER WAY

Jones Lang LaSalle Brokerage, Inc. License #: 01856260



1125 Merrill Street, Menlo Park

- High Quality, Class A+ new construction in downtown Menlo Park
- Exclusive outdoor balcony
- Neighboring tenants include Sapphire Ventures and Social Capital

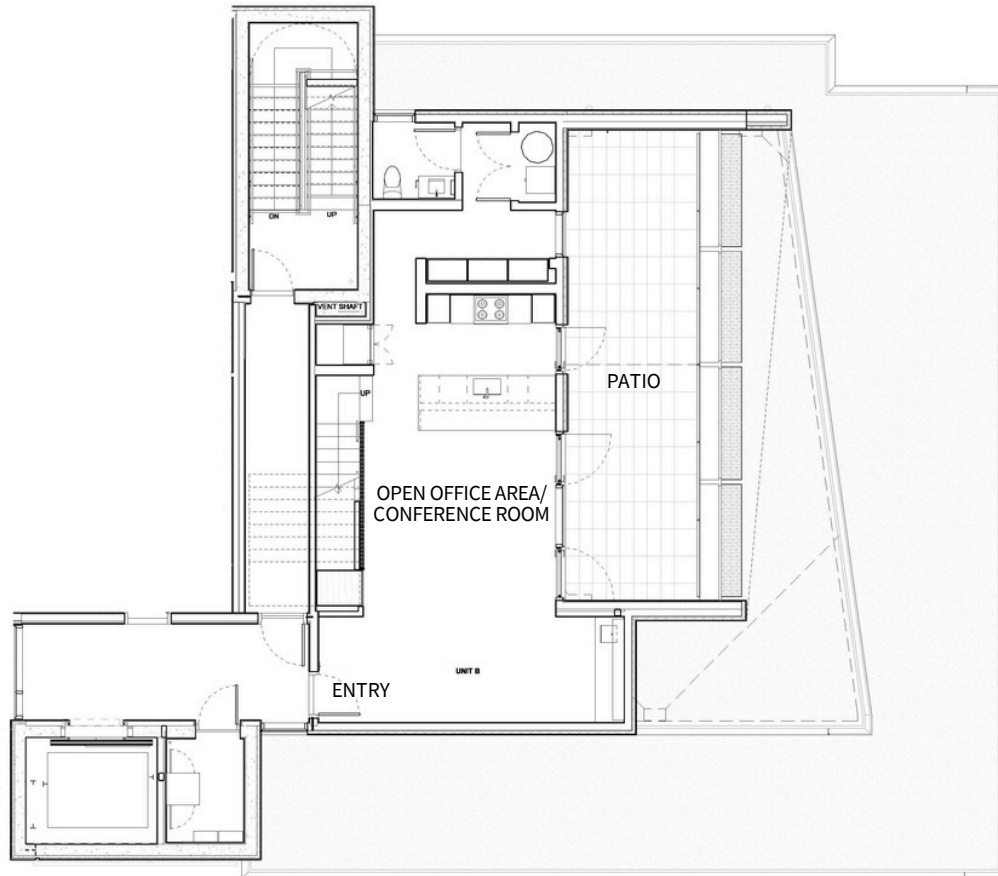
Suite P2 2,500 SF

Available Now

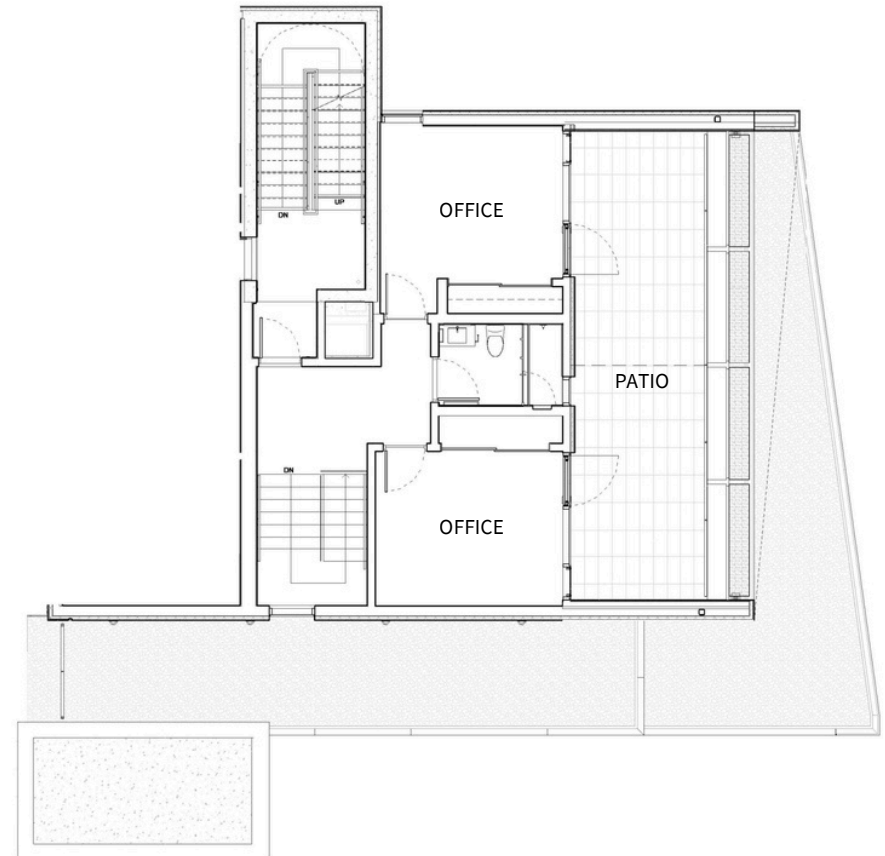
Asking \$8.25 NNN

**Estimated
OpEx** \$3.00 psf

LEVEL 3



LEVEL 4



Thank you

About JLL

For over 200 years, JLL (NYSE: JLL), a leading global commercial real estate and investment management company, has helped clients buy, build, occupy, manage and invest in a variety of commercial, industrial, hotel, residential and retail properties. A Fortune 500® company with annual revenue of \$20.9 billion and operations in over 80 countries around the world, our more than 103,000 employees bring the power of a global platform combined with local expertise. Driven by our purpose to shape the future of real estate for a better world, we help our clients, people and communities SEE A BRIGHTER WAYSM. JLL is the brand name, and a registered trademark, of Jones Lang LaSalle Incorporated. For further information, visit jll.com.

JLL

Bryte Bellotti
CA Lic #01944321
Bryte.Bellotti@jll.com
+1 (408) 621 7517

Colliers

Christian Prella
CA Lic #1888351
Christian.Prella@colliers.com
+1 (650) 688 8504

Although information has been obtained from sources deemed reliable, JLL does not make any guarantees, warranties or representations, express or implied, as to the completeness or accuracy as to the information contained herein. Any projections, opinions, assumptions or estimates used are for example only. There may be differences between projected and actual results, and those differences may be material. JLL does not accept any liability for any loss or damage suffered by any party resulting from reliance on this information. If the recipient of this information has signed a confidentiality agreement with JLL regarding this matter, this information is subject to the terms of that agreement. ©2025. Jones Lang LaSalle IP, Inc. All rights reserved.