



# *For Sale*

**15,584 SF / 1.6 AC Available**

1021 Rogers St, Laurel, MS 39440

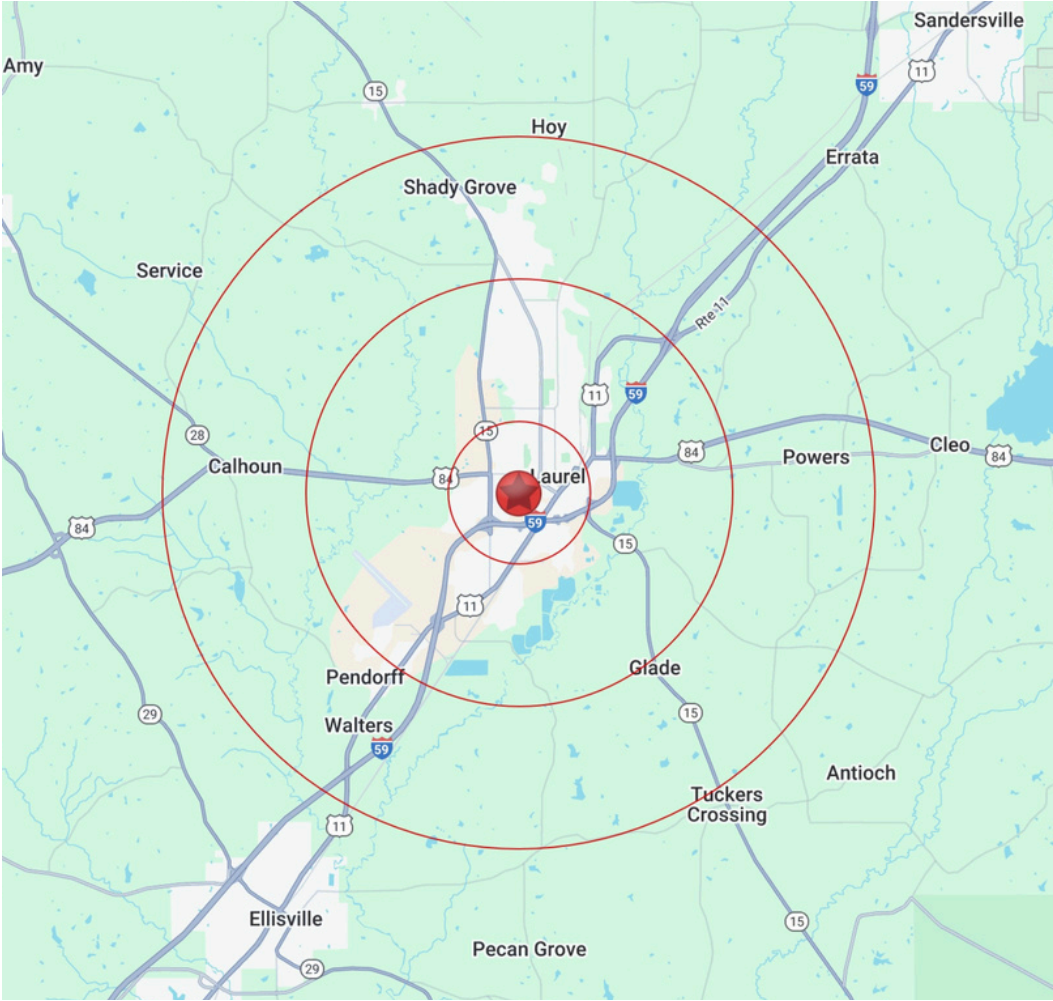


# 1021 Rogers Street

Laurel, MS 39440

## Property Specifications

- Strategic Downtown Location Positioned in Laurel's established central business district
- Direct access to US Hwy 84 E-W corridor with immediate connectivity to Hwy 15
- High-Traffic Arterial Position Located on N 11th Avenue, key north-south thoroughfare
- National Media Recognition Benefits from HGTV's "Home Town" exposure and increased tourism
- Healthcare Hub Proximity Adjacent to South Central Regional Medical Center
- Ten minutes to I-59 with direct routes to Hattiesburg (30 minutes) and Jackson (2 hours)
- Regional Market Reach Commercial hub serving surrounding counties







## Retailers Within One Mile



## Demographics

1 Mile      3 Mile      5 Mile

	1 Mile	3 Mile	5 Mile
 Total Population	4,961	17,262	27,592
 Total Daytime Population	12,269	28,220	38,670
 Median Age	37.6	36.8	37.5
 Median Household Income	\$45,013	\$41,227	\$46,899

\*Source: Esri 2025





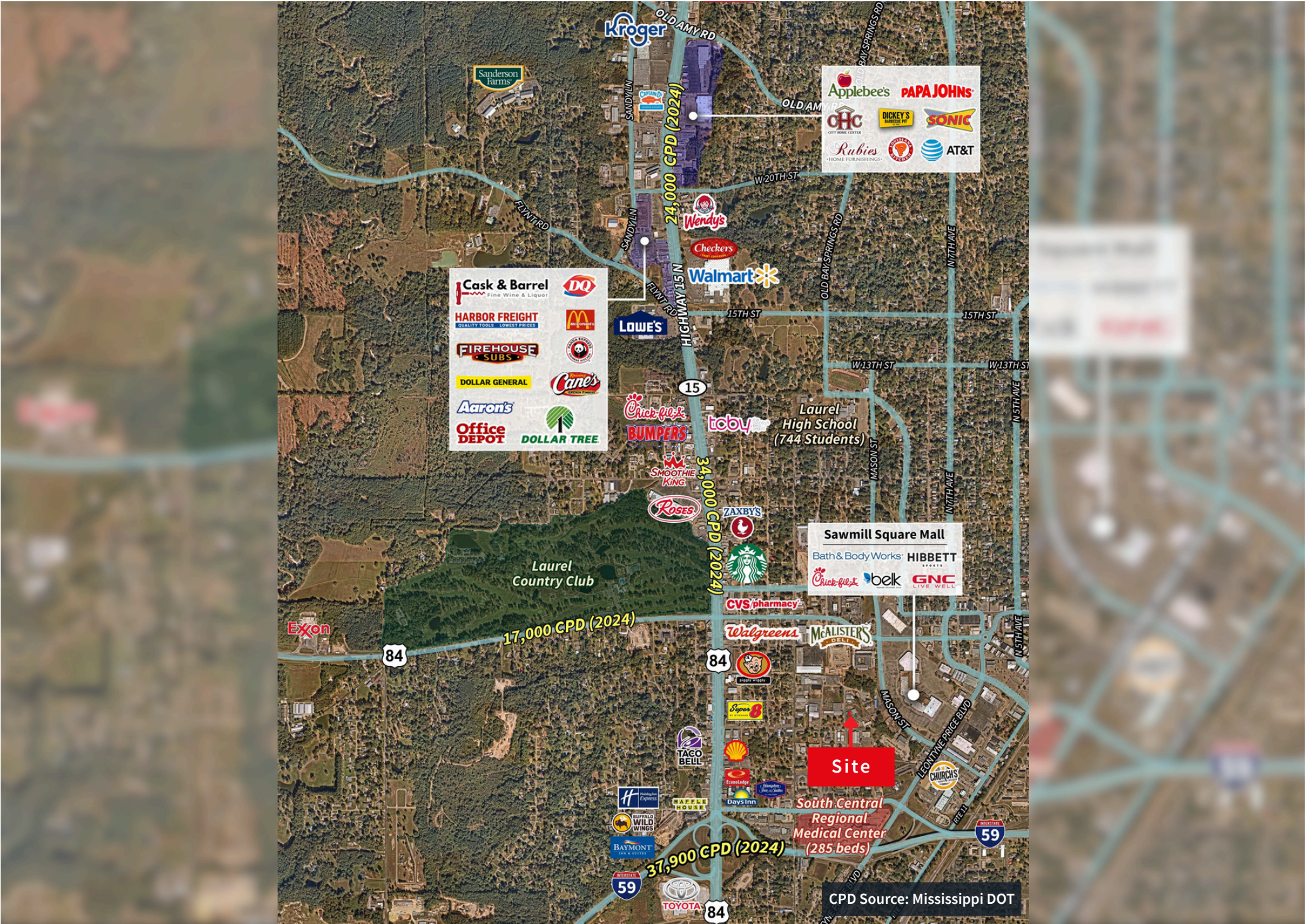


# Mid Zoom Aerial





# Retail Aerial





# Thank you

Contact for more information:



**Buff Teague**

*Executive Managing Director*

[buff.teague@jll.com](mailto:buff.teague@jll.com)

251 341 1600