

New Stanton  
Turnpike Exit

Broadview Rd

N Center Ave

**20.9 AC**  
**910,404 SF**

EXIT 57



# Available

jll.com

Prime Land in New Stanton, PA

+/- 20.9 AC

181 Broadview Road | New Stanton, PA 15672

**Greg Hopkins**  
412.770.5295  
greg.hopkins@jll.com

**Rick O'Brien, SIOR**  
412.208.1403  
rick.obrien@jll.com

**Alec Staiger**  
412.977.4184  
alec.staiger@jll.com

 **JLL** SEE A BRIGHTER WAY



SITE



PROPERTY INFORMATION

Site Size	20.9 AC
Zoning	B-1 General Business District
Municipality	Westmoreland County
Parcel ID	64-03-00-0-046



**AREA PHOTOS**





TRADE AREA





## KEY DISTANCES

01 miles (5 min) to I-70

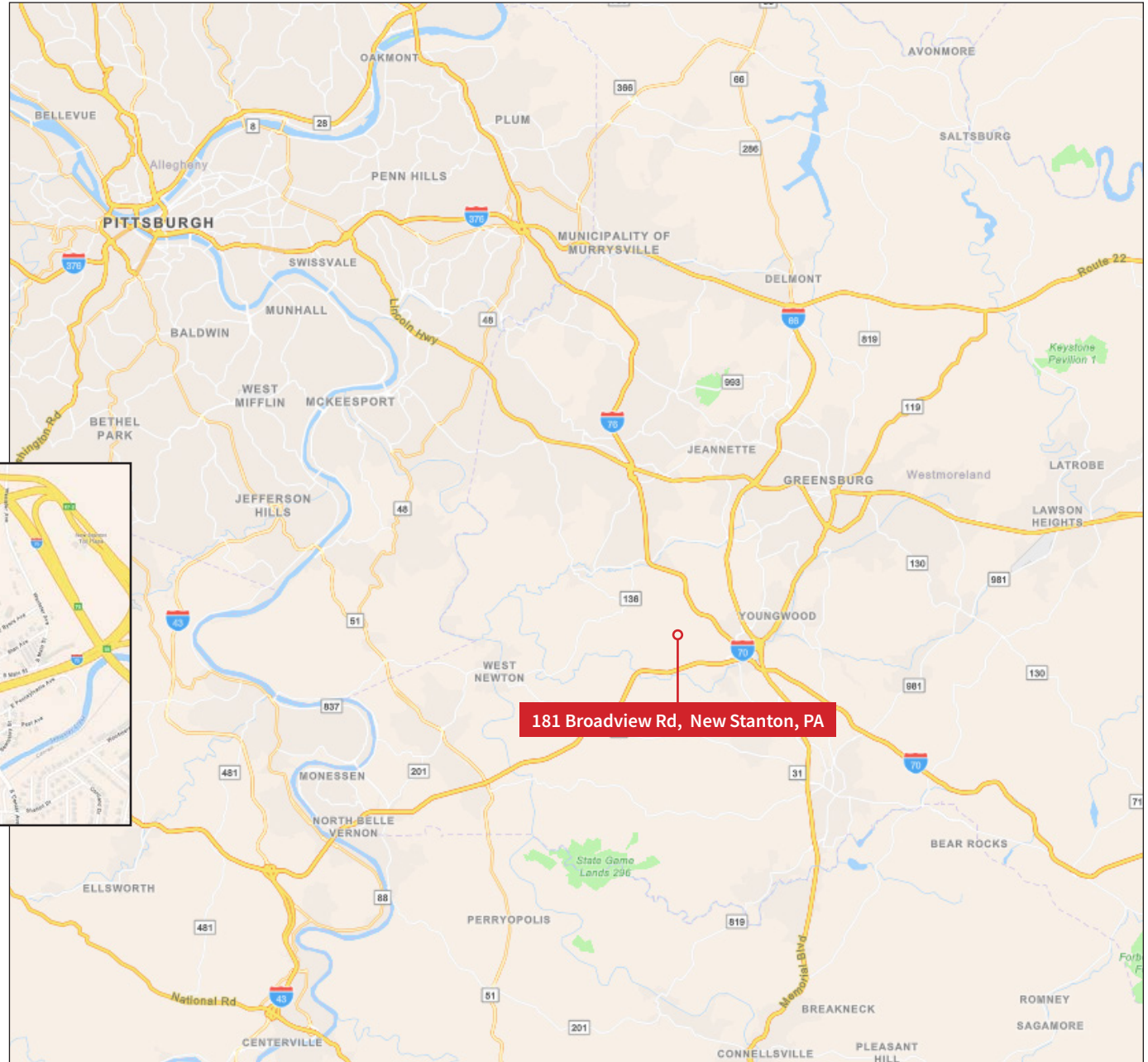
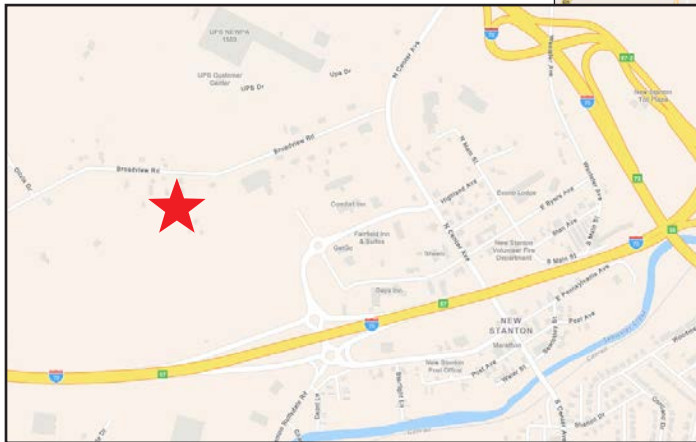
01 miles (5 min) to I-76

16 miles (20 min) to I-376

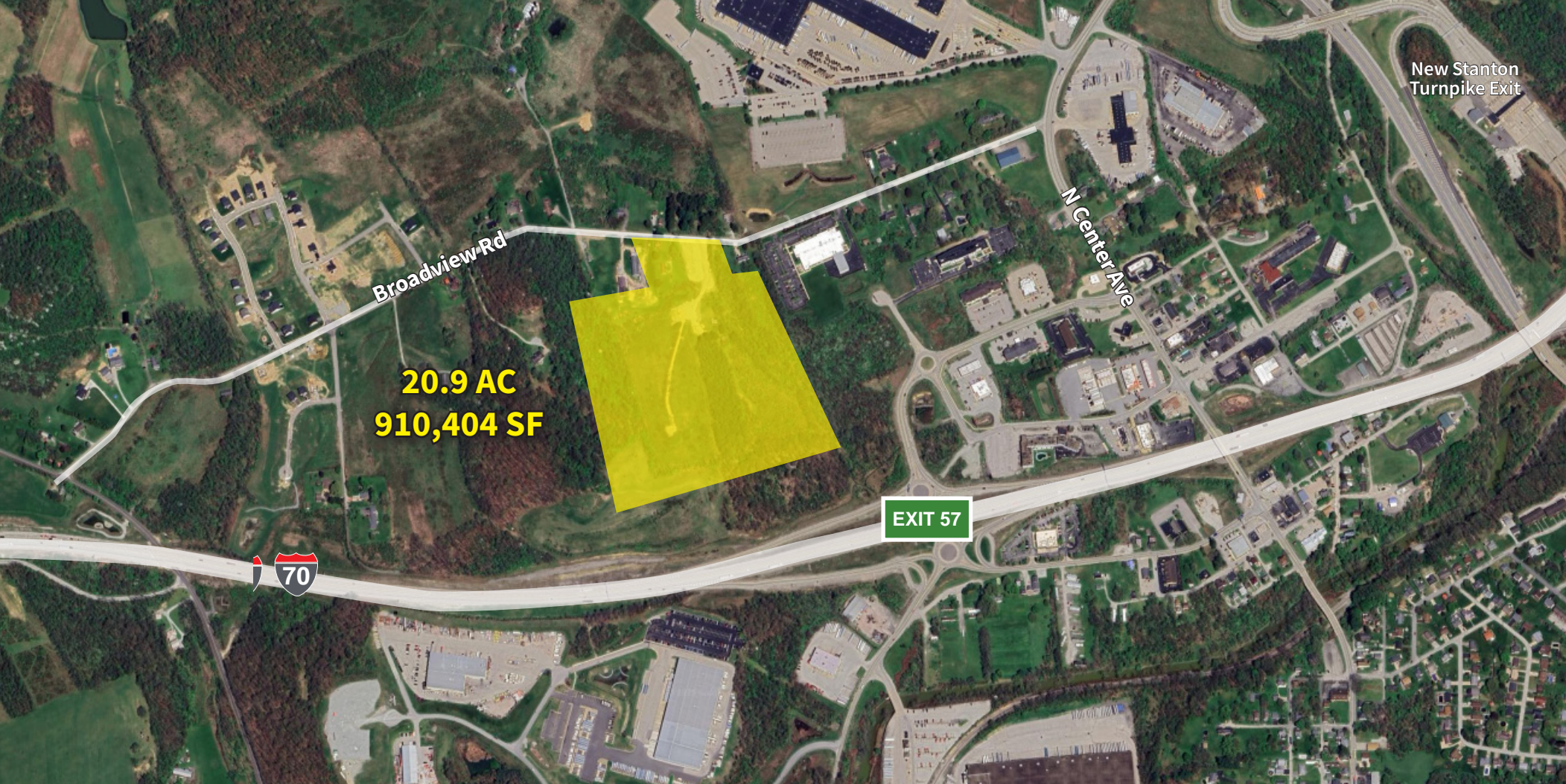
35 miles (45 min) to Pittsburgh

53 miles (57 min) to Cranberry

71 miles (1 hr 13 min) to PIT Airport







DISCLAIMER: Although information has been obtained from sources deemed reliable, Owner, Jones Lang LaSalle, and/or their representatives, brokers or agents make no guarantees as to the accuracy of the information contained herein, and offer the Property without express or implied warranties of any kind. The Property may be withdrawn without notice. If the recipient of this information has signed a confidentiality agreement regarding this matter, this information is subject to the terms of that agreement. ©2025. Jones Lang LaSalle. All rights reserved.

[jll.com](https://jll.com)

## Contacts

**Greg Hopkins**  
412.770.5295  
[greg.hopkins@jll.com](mailto:greg.hopkins@jll.com)

**Rick O'Brien, SIOR**  
412.208.1403  
[rick.obrien@jll.com](mailto:rick.obrien@jll.com)

**Alec Staiger**  
412.977.4184  
[alec.staiger@jll.com](mailto:alec.staiger@jll.com)

 **JLL** SEE A BRIGHTER WAY