



± 100,000 SF AVAILABLE
FOR SUBLEASE

3201 GATEWAY CENTRE PKWY

PINELLAS PARK, FL 33781





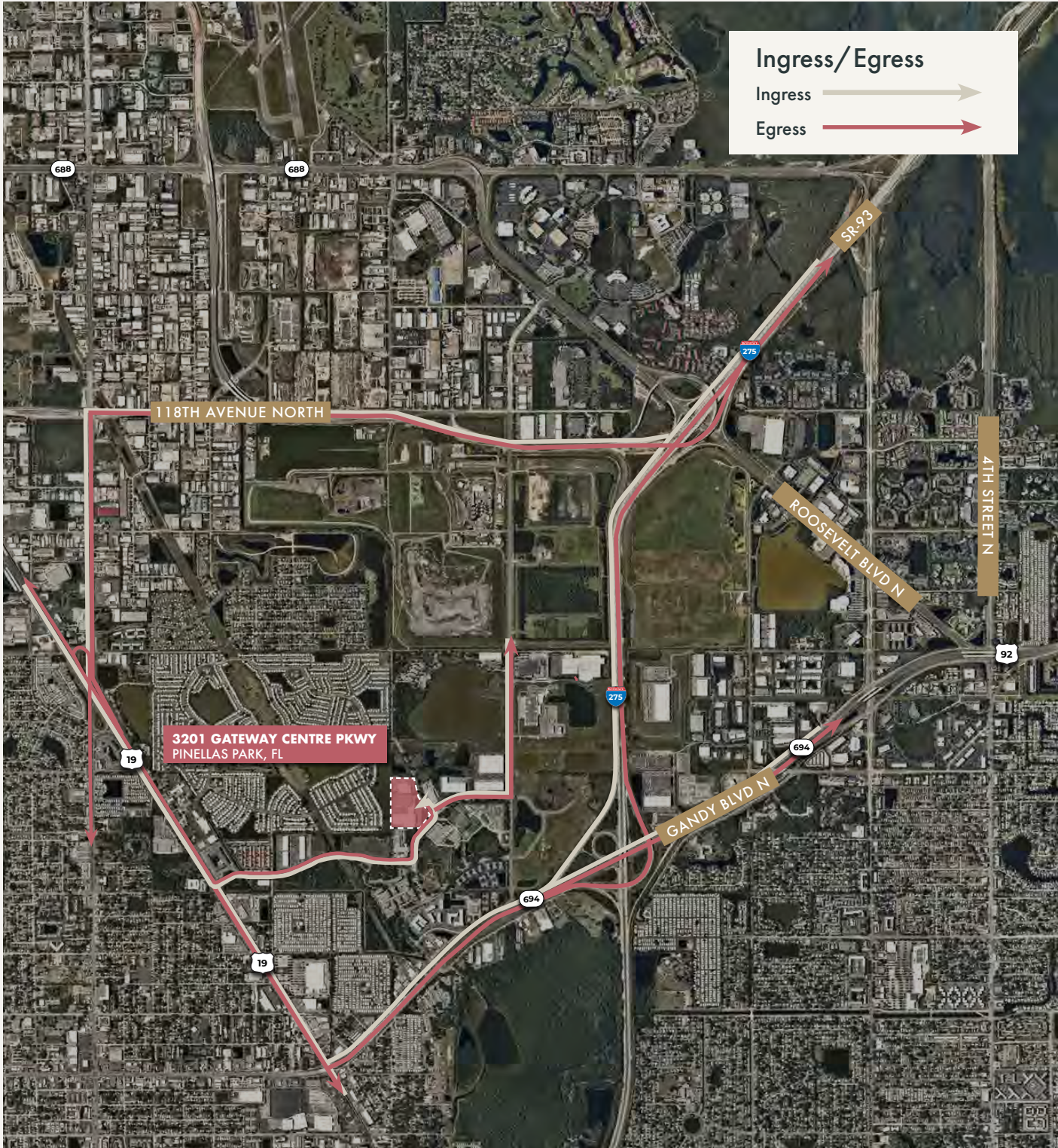
Property Specifications



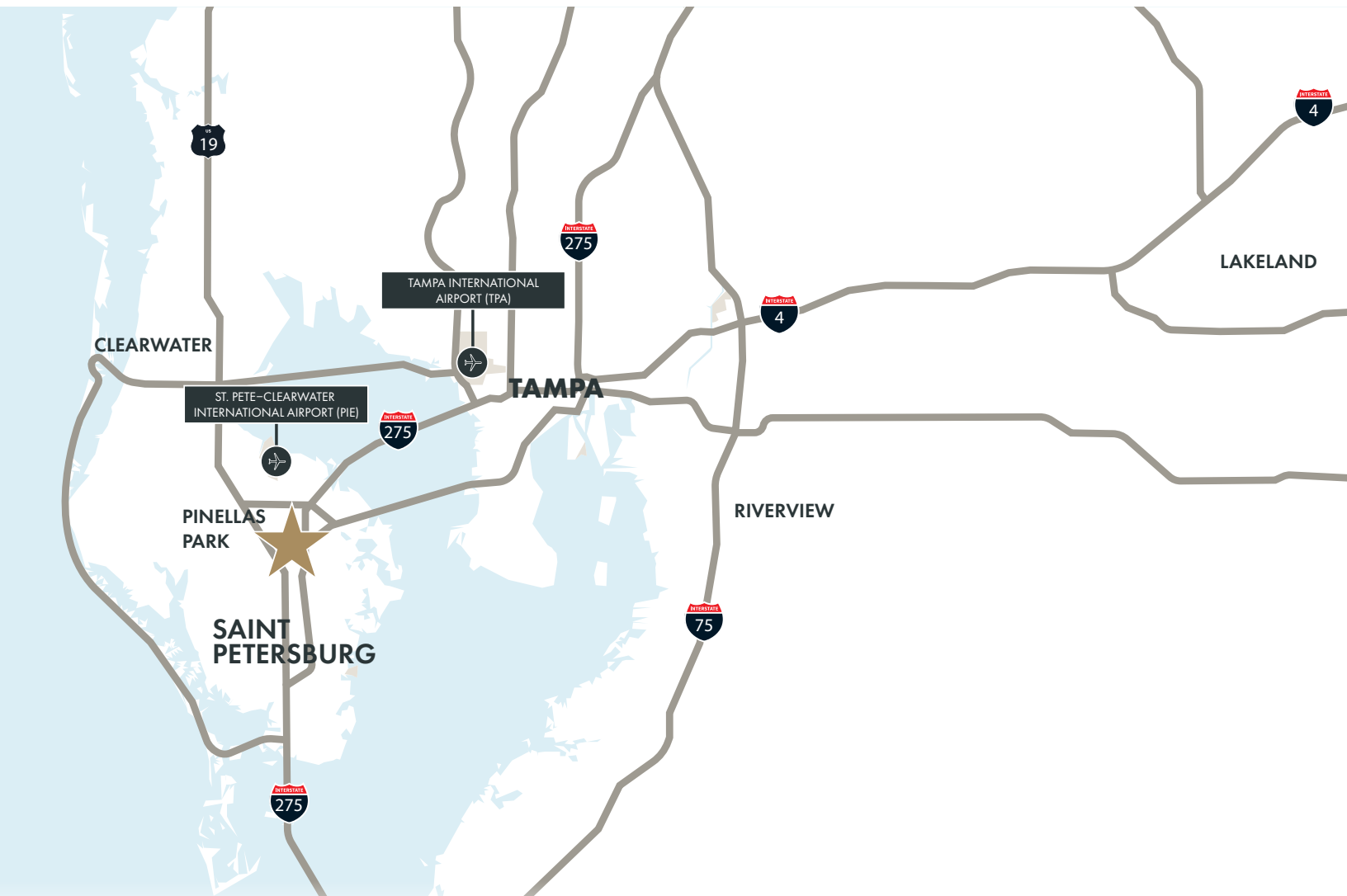
PROPERTY SPECIFICATIONS	
±100,000 SF	Square Feet Available
7	Grade-Level Doors
8	Dock High Doors (Levelers +Seals)
3	Phase Power
30'	Clear Height
ESFR	Sprinkler Type

-  ±100,000 Square Feet
-  LED Lighting
-  Fully Air Conditioned
-  Tilt-Wall Construction
-  Fenced Truck Court
-  Cross-Dock Configuration

Immediate Interstate 275 Access



Premier Regional Connectivity



Please contact

John Dunphy CCIM, SIOR
Executive Managing Director
+1 727 744 2356 | johnc.dunphy@jll.com

Although information has been obtained from sources deemed reliable, JLL does not make any guarantees, warranties or representations, express or implied, as to the completeness or accuracy as to the information contained herein. Any projections, opinions, assumptions or estimates used are for example only. There may be differences between projected and actual results, and those differences may be material. JLL does not accept any liability for any loss or damage suffered by any party resulting from reliance on this information. If the recipient of this information has signed a confidentiality agreement with JLL regarding this matter, this information is subject to the terms of that agreement. ©2025 Jones Lang LaSalle Brokerage, Inc. All rights reserved.



Jones Lang LaSalle, a licensed real estate broker