



2001

ADDISON STREET

BERKELEY, CA

Office Space Available For Lease



maia | 2001
addison

Building Specifications



Located in Historic Downtown Berkeley



Brand new amenity lounge & conference center



Monthly parking across the street at the Center Street Parking Garage



Walking distance to neighborhood amenities – restaurants, Cafes & Bars



Minutes from UC Berkeley Campus



2 blocks from Downtown Berkeley BART station



5 bus stops within walking distance



Located within an Opportunity Zone



2001 ADDISON STREET

Availabilities Overview

Suite	R.S.F.	Description/Features
Suite 130	1,530	Four private offices, large open area with extensive natural light, spec suite, available immediately.
Suite 140	890	Two private offices, open area, spec suite, available immediately.
Suite 260	2,373	One private office/breakout room, one conference room, large open area, one newly finished kitchenette with extensive natural light, spec suite, available immediately.
Suite 275	1,873	One conference room, four private offices, large open area, available 1/1/26.



2001 ADDISON STREET

First Floor

Suite 130

- $\pm 1,530$ SF
- Four private offices
- Large open area with extensive natural light
- Spec suite
- Available immediately

Suite 140

- ± 890 SF
- Two private offices
- Open area
- Spec suite
- Available immediately



2001 ADDISON STREET

Second Floor

Suite 260



Virtual Tour

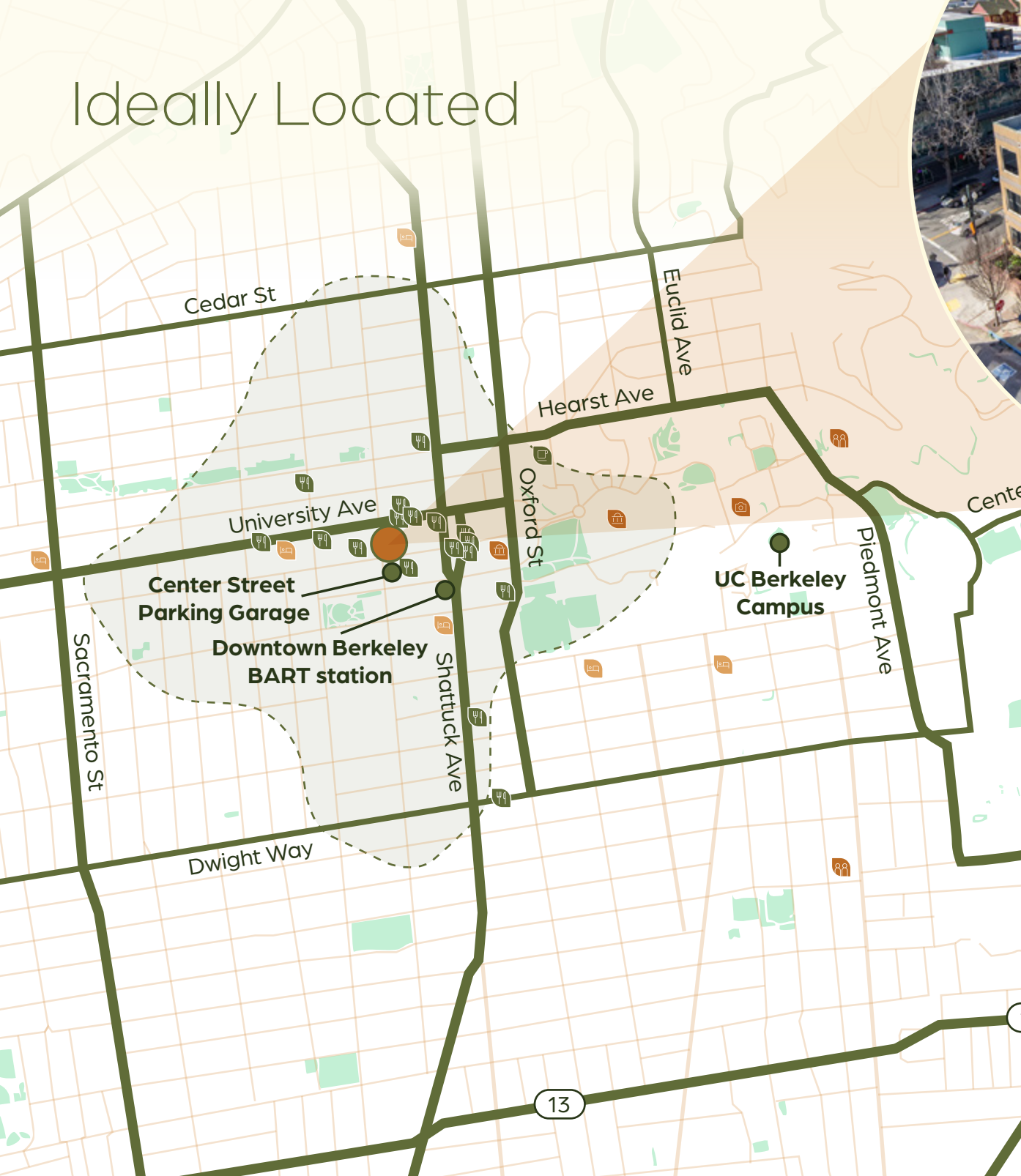
- $\pm 2,373$ SF
- One private office/breakout room
- One conference room
- Large open area
- One newly finished kitchenette
- Extensive natural light
- Spec suite
- Available immediately

Suite 275

- $\pm 1,873$ SF
- One conference room
- Four private offices
- Large open area
- Available 1/1/26



Ideally Located



Just minutes from what matters

- Walk score – 100
- Transit score – 72
- Bike score – 100
- 2 blocks from Downtown Berkeley BART station
- 5 bus stops within walking distance



2001

ADDISON STREET BERKELEY, CA

CHARLIE SWEENEY | License #01987199
Vice President
+1 510 593 8034
Charlie.Sweeney@jll.com

SAM SWAN | License #00992868
Managing Director
+1 510 388 6400
Sam.Swan@jll.com



maia | 2001
addison

Although information has been obtained from sources deemed reliable, neither Owner nor JLL makes any guarantees, warranties or representations, express or implied, as to the completeness or accuracy as to the information contained herein. Any projections, opinions, assumptions or estimates used are for example only. There may be differences between projected and actual results, and those differences may be material. The Property may be withdrawn without notice. Neither Owner nor JLL accepts any liability for any loss or damage suffered by any party resulting from reliance on this information. If the recipient of this information has signed a confidentiality agreement regarding this matter, this information is subject to the terms of that agreement. ©2025 Jones Lang LaSalle IP, Inc. All rights reserved.