




3843 W. 43rd,
Chicago, Illinois

 **JLL** SEE A BRIGHTER WAY

For sublease

3843 W. 43rd Street
Chicago IL 60632

+/-80,026 SF
Divisible to 25,000 SF
Sublease through May 31, 2028



3843 W. 43rd Street Chicago IL 60632

PROPERTY HIGHLIGHTS

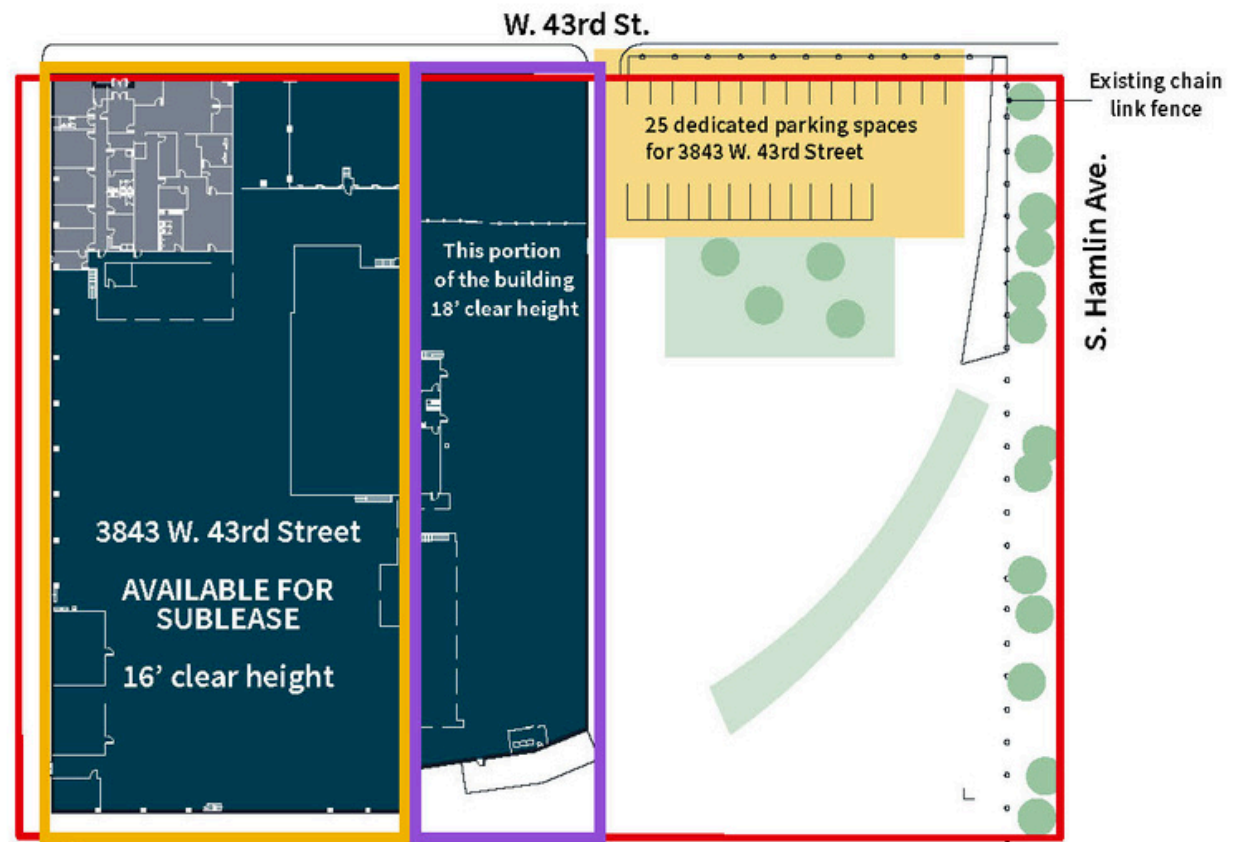
3843 W. 43rd is located in Chicago's Crawford Industrial Park, with easy access to public transportation and area amenities. 3 minutes to a full interchange at I-55 and 15 minutes to downtown Chicago.

Property specifications

- +/- 80,026 sq.ft.
- Divisible to 25,000 sq. ft.
- +/- 11,000 sq. ft. office
- 16' - 18' Clear height
- 6 Interior docks
- 25 Parking spaces
- Zoned M2-2
- Located in the 14th Ward
- Sublease through May 31, 2028
- **Taxes: \$0.78/sf**
- **CAM: \$1.06/sf**
- **Asking Rate: \$5.50 /SF NET**

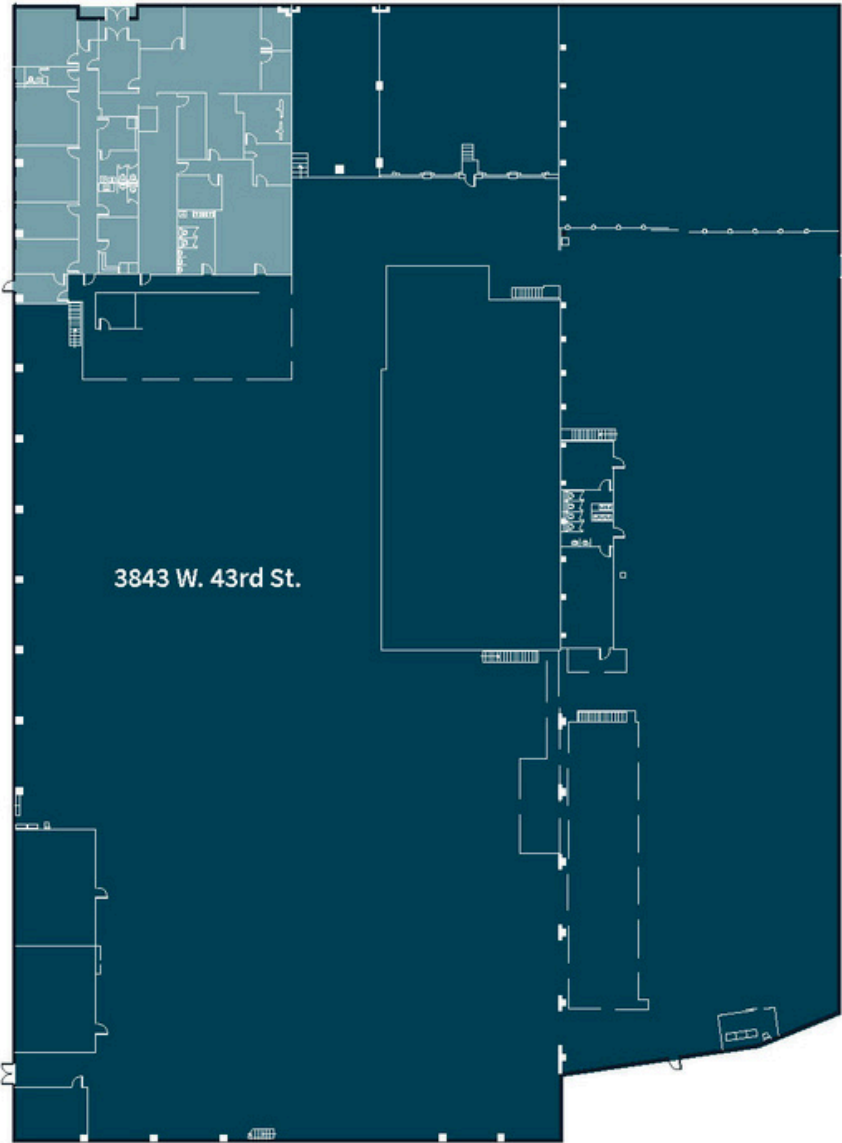
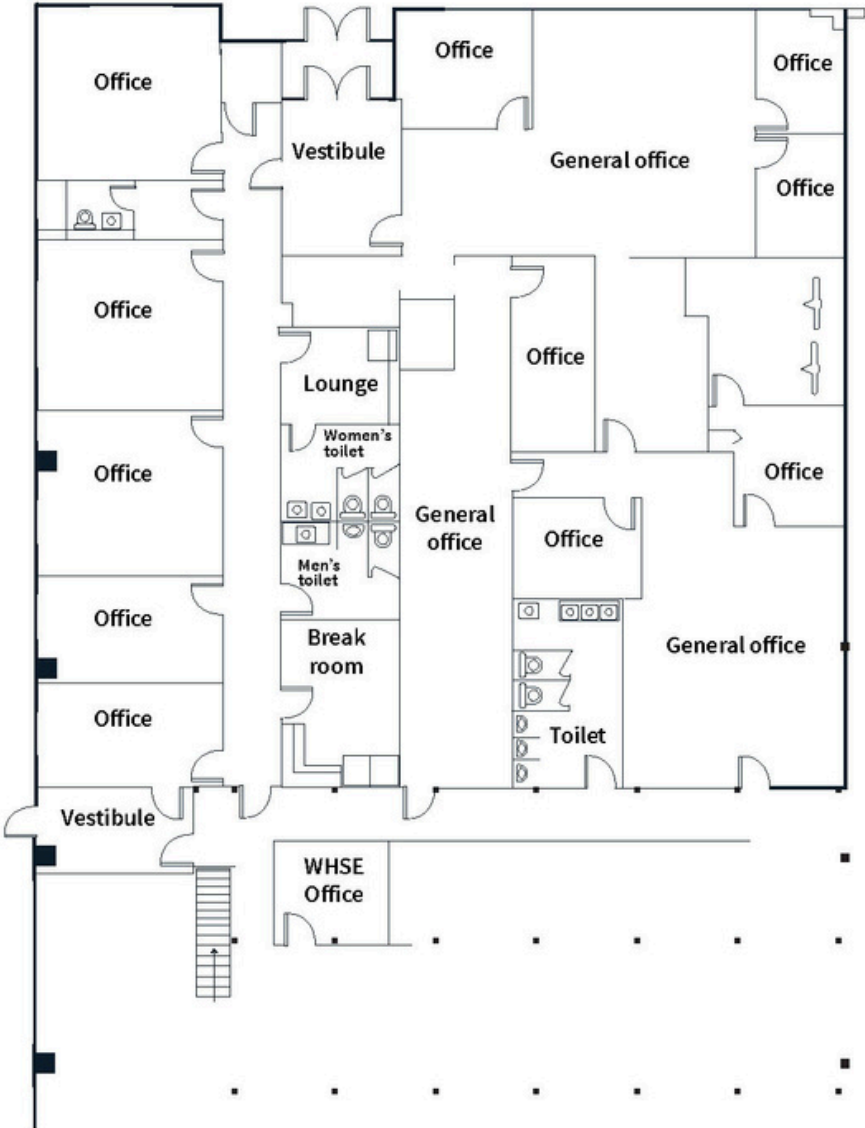
Advantages and amenities

- Fully sprinkled building
- New roof & LED lighting
- Access to a strong labor force



3843 W. 43rd Street Chicago IL 60632

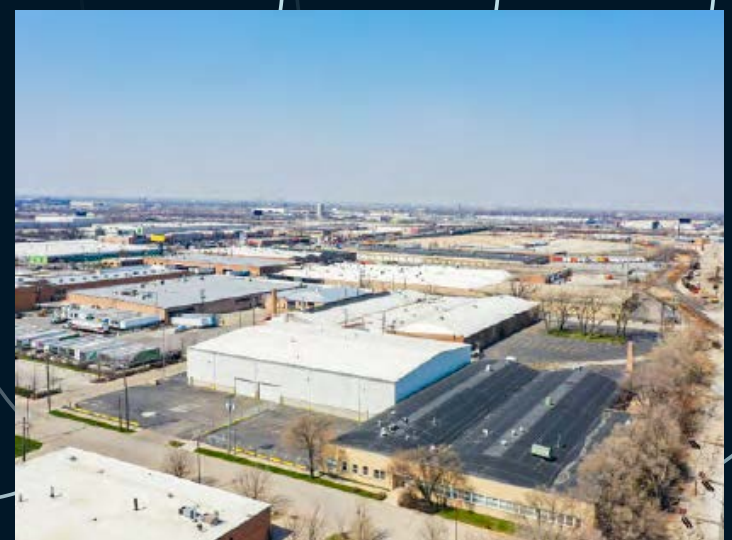
WAREHOUSE & OFFICE PLANS



3843 W. 43rd Street Chicago IL 60632

AREA AMENITIES





Michael Conway
Senior Vice President
michael.conway@jll.com
815 529 7100

Keith Stauber
Managing Director
keith.stauber@jll.com
847 804 2564

Although information has been obtained from sources deemed reliable, neither Owner nor JLL makes any guarantees, warranties or representations, express or implied, as to the completeness or accuracy as to the information contained herein. Any projections, opinions, assumptions or estimates used are for example only. There may be differences between projected and actual results, and those differences may be material. The Property may be withdrawn without notice. Neither Owner nor JLL accepts any liability for any loss or damage suffered by any party resulting from reliance on this information. If the recipient of this information has signed a confidentiality agreement regarding this matter, this information is subject to the terms of that agreement. ©2025. Jones Lang LaSalle IP, Inc. All rights reserved.