

Ignite Growth *with* Advanced Manufacturing Opportunities *on* Mare Island



Mare
Island
Co.

Building 253
575 CONNOLLY STREET

Jones Lang LaSalle Brokerage, Inc. · Real Estate License #: 01856260

Building 253

26,858 RSF

575 CONNOLLY ST.



TOTAL SF:
26,858 SF



BEST USES:
Warehousing, light
manufacturing / assembly



POWER:
1,000 amps at 280/120v
Single Phase



TOTAL OFFICE SF:
224 SF



WATER:
Sprinklered



YARD:
Adjacent Yard

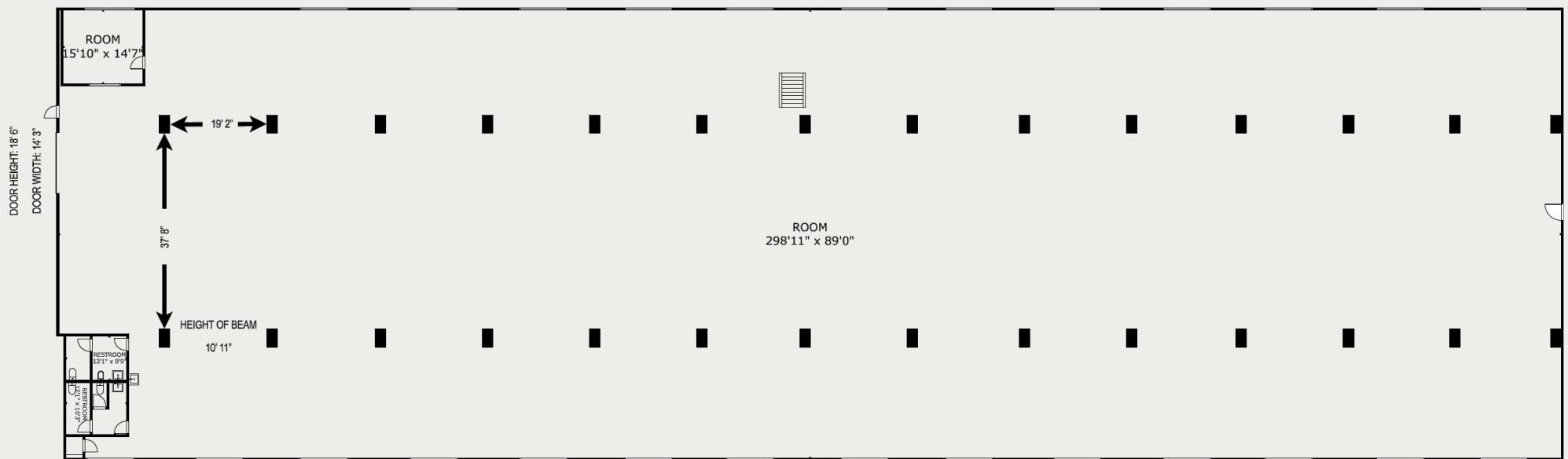


FLOOR:
Concrete slab on
grade



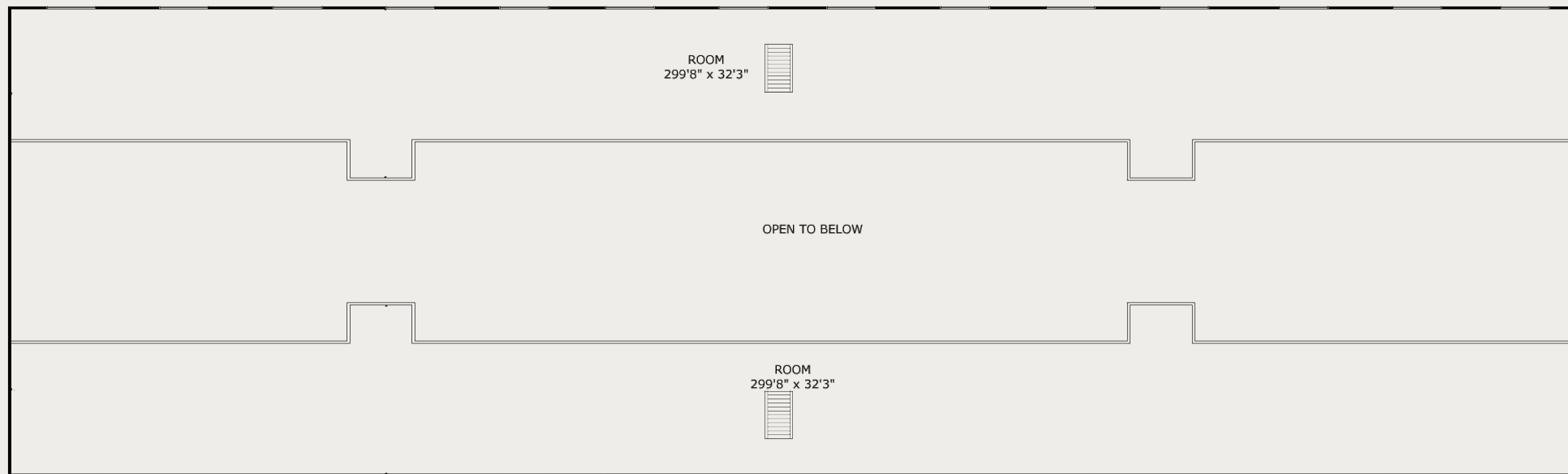
Building 253

FIRST FLOOR PLAN



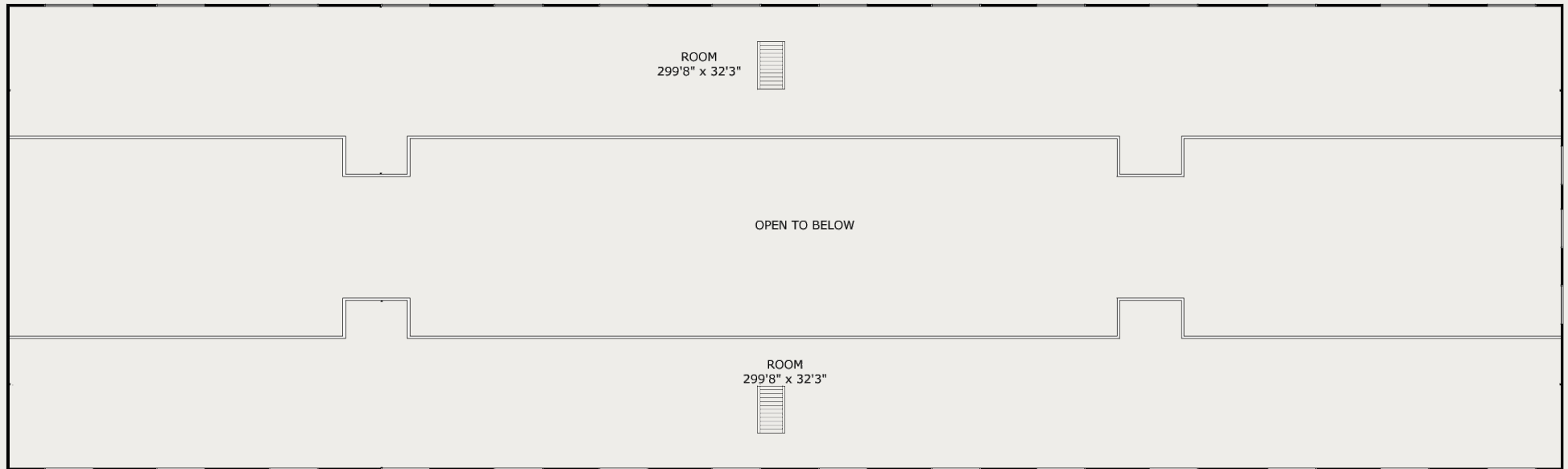
Building 253

SECOND FLOOR PLAN



Building 253

THIRD FLOOR PLAN







LEASING TEAM:

MATT BRACCO

Senior Managing Director

matt.bracco@jll.com

+1 925 948 1305

CA Lic. #01185434

GREG MATTER

Executive Managing Director

greg.matter@jll.com

+1 650 480 2220

CA Lic. #01380731

KRISTI CHILDERS

Managing Director

kristi.childers@jll.com

+1 510 812 2878

CA Lic. #01997043

CHRIS BURNS

Managing Director

christopher.burns@jll.com

+1 925 389 0292

CA Lic. #01880060

CHRIS NEEB

Managing Director

chris.neeb@jll.com

+1 707 495 7777

CA Lic. #01324612

Mare
Island
Co.

NATHAN NIEBERGALL

Director of Leasing

CA Lic. #01967005

Mare Island Co.

Nathan.Niebergall@mareislandco.com

www.mareislandco.com

Although information has been obtained from sources deemed reliable, neither Owner nor JLL makes any guarantees, warranties or representations, express or implied, as to the completeness or accuracy as to the information contained herein. Any projections, opinions, assumptions or estimates used are for example only. There may be differences between projected and actual results, and those differences may be material. The Property may be withdrawn without notice. Neither Owner nor JLL accepts any liability for any loss or damage suffered by any party resulting from reliance on this information. If the recipient of this information has signed a confidentiality agreement regarding this matter, this information is subject to the terms of that agreement.
© 2025 Jones Lang LaSalle IP, Inc. All rights reserved.