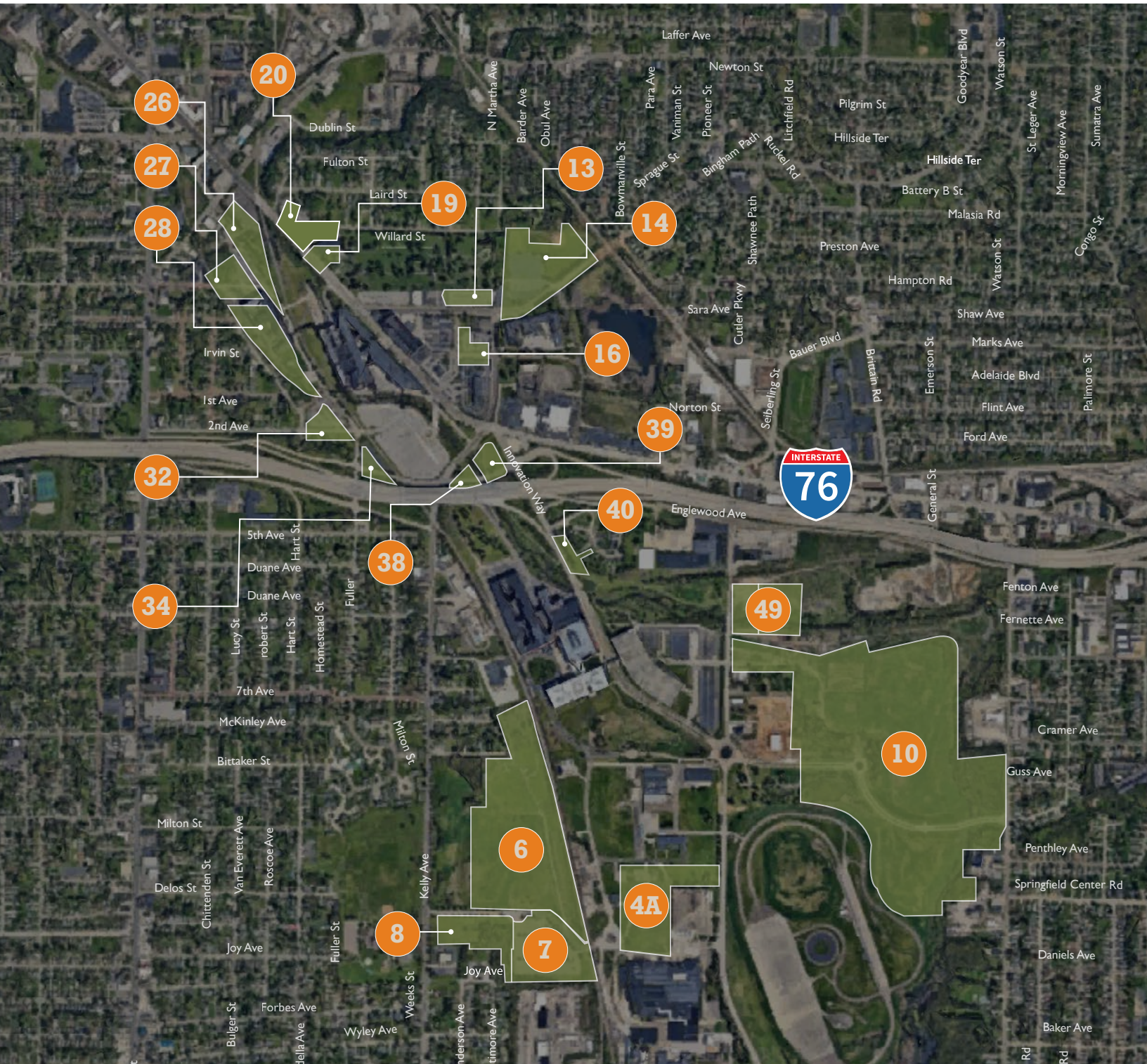




# LAND AVAILABLE FOR LEASE

The East End | Akron, OH

Up to **180 Acres**





Address	Acreage	County Parcel #	Aerial #
210 Massilon Road	72.31	67-63115	10
Unknown Goodyear Boulevard	6.81	67-63754	14
110 Goodyear Boulevard	2.20	68-53355	16
N. Martha Avenue	0.10	68-53357	16
15 South Case Avenue	4.12	67-63131	26
1140 River Street	5.20	67-63133	28
1058 River Street	2.56	67-63132	27
1255 Second Avenue	1.95	67-63137	32
1291 Third Avenue	1.03	67-63139	34

Address	Acreage	County Parcel #	Aerial #
99 Seiberling Street	3.51	67-62306	49
99 Seiberling Street	8.00	67-61032	49
1339 Tech Way	22.23	67-63111	6
465 Kelly Avenue	4.99	67-63113	8
1381 Tech Way	5.95	67-63109	4A
N Martha Ave	1.60	67-63121	16
1244 Tech Way	9.16	67-63112	7
95 Goodyear Boulevard	1.37	67-63118	13
27 Kelley Avenue	0.81	67-63143	39

## BUILD WITHIN AKRON'S PREMIER URBAN DEVELOPMENT

Secure a premier development site within The East End, Akron's most sought-after mixed-use campus, where visionary developers can capitalize on the area's established success and continued growth trajectory. This exceptional land opportunity offers the flexibility of ground lease terms or speculative development within a proven lifestyle destination that has already attracted a diverse mix of office tenants, residents, and retail establishments.

### Kristy (Hull) Peters SIOR

Senior Vice President, JLL  
+1 440 226 1550  
kristy.hull@jll.com

### Amy Bradford

Vice President, JLL  
+1 216 407 5821  
amy.bradford@jll.com

### Sam Everson

Associate, JLL  
+1 440 503 1150  
samuel.everson@jll.com

[eastendakron.com](http://eastendakron.com)

Jones Lang LaSalle Americas, Inc.

Although information has been obtained from sources deemed reliable, JLL does not make any guarantees, warranties or representations, express or implied, as to the completeness or accuracy as to the information contained herein. Any projections, opinions, assumptions or estimates used are for example only. There may be differences between projected and actual results, and those differences may be material. JLL does not accept any liability for any loss or damage suffered by any party resulting from reliance on this information. If the recipient of this information has signed a confidentiality agreement with JLL regarding this matter, this information is subject to the terms of that agreement. ©2025 Jones Lang LaSalle Brokerage, Inc. All rights reserved.

