



For Sublease

±16,000 - 31,250 SF Available

1850 Diplomat Drive Suite 200

Farmers Branch, TX 75234



JLL Contacts

Brandon Brower

brandon.brower@jll.com

(281) 685.2511

Paul Davis

paul.davis2@jll.com

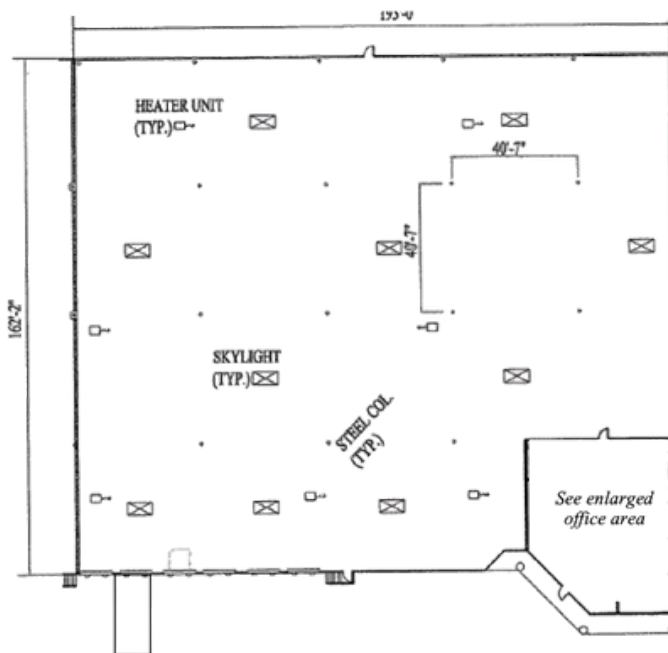
(214) 808.1519



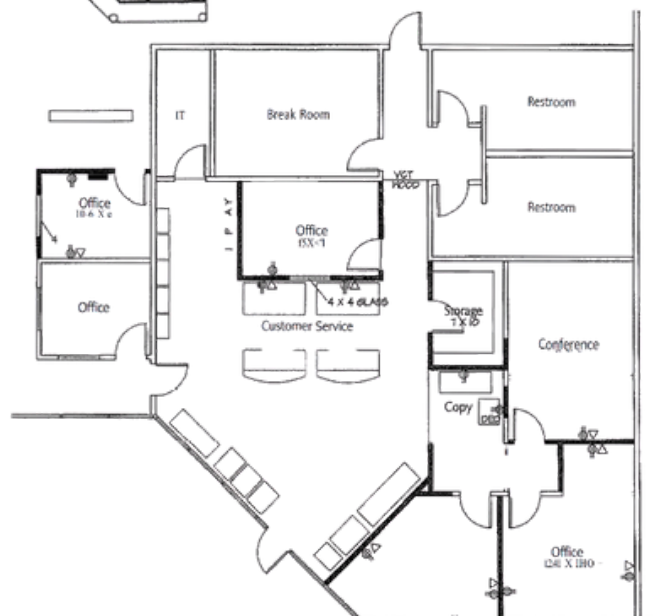
Property Specifications

- 31,250 SF
- $\pm 2,737$ SF office
- Open to leasing $\pm 16,000$ SF with 2 private offices and bullpen office
- Five (5) dock high doors
- One (1) dock leveler
- One (1) ramp
- 22' clear height
- Fully sprinklered
- Valwood Park location

Site Plan



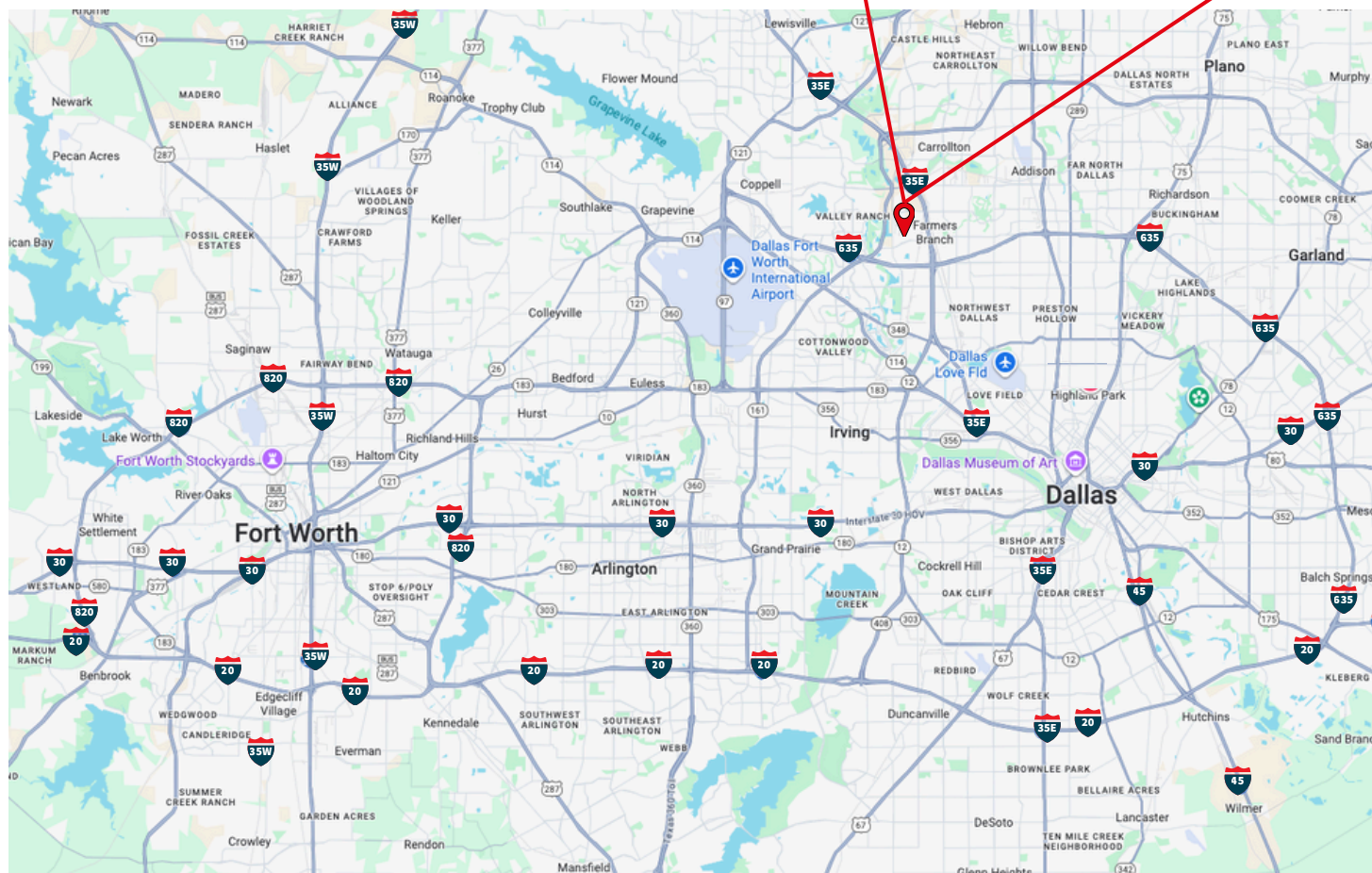
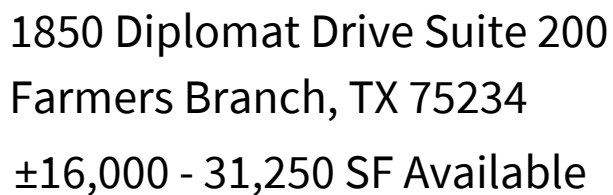
Enlarged Office Area





Property Photos





Brandon Brower
brandon.brower@jll.com
(281) 685.2511

Paul Davis
paul.davis2@jll.com
(214) 808.1519

Although information has been obtained from sources deemed reliable, neither Owner nor JLL makes any guarantees, warranties or representations, express or implied, as to the completeness or accuracy as to the information contained herein. Any projections, opinions, assumptions or estimates used are for example only. There may be differences between projected and actual results, and those differences may be material. The Property may be withdrawn without notice. Neither Owner nor JLL accepts any liability for any loss or damage suffered by any party resulting from reliance on this information. If the recipient of this information has signed a confidentiality agreement regarding this matter, this information is subject to the terms of that agreement. ©2023 Jones Lang LaSalle IP, Inc. All rights reserved.