

For Sublease

Gateway Business Center

6005 Commerce Drive | Irving, TX 75063

9,565 SF Available | S-330



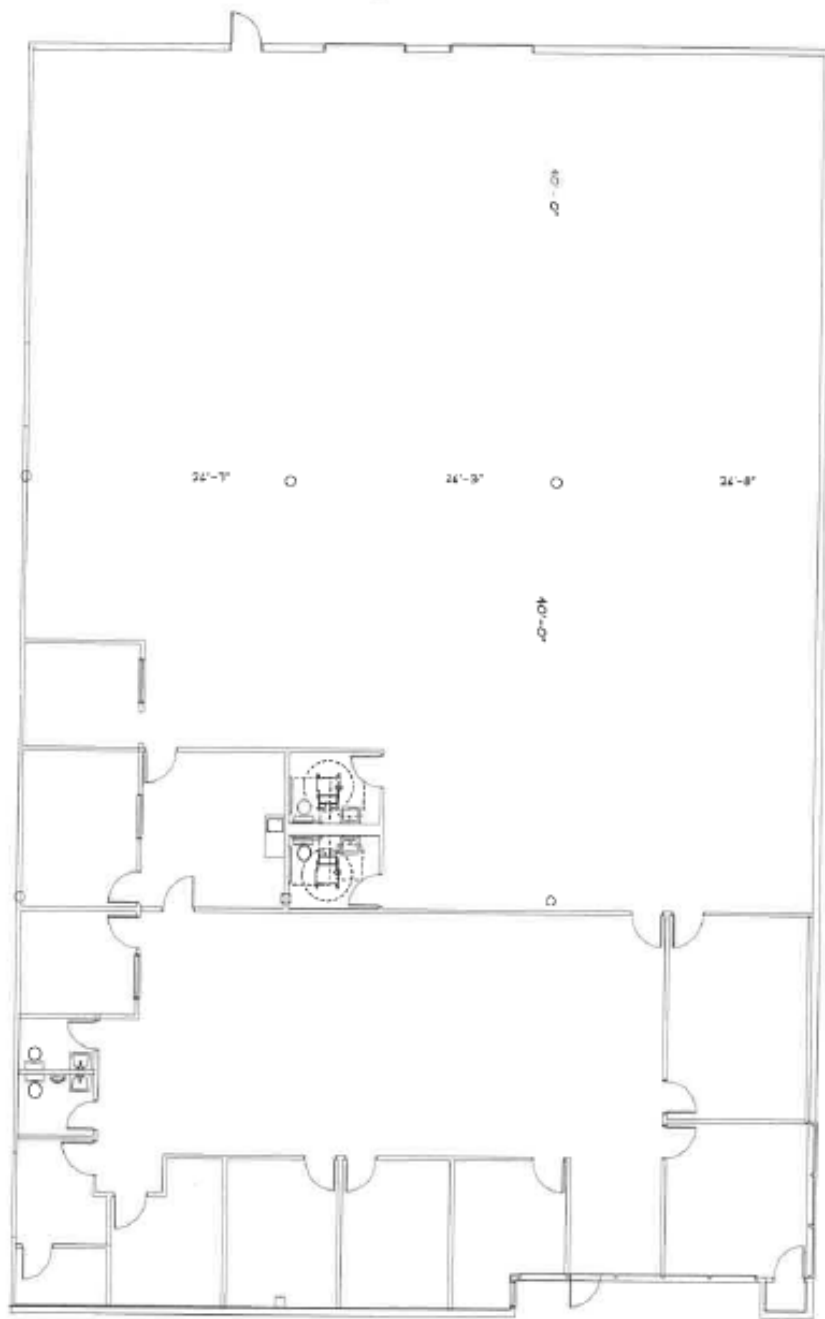
Property Specifications

- ±9,565 SF Office/Warehouse
 - Approx. 3,500 SF Office
 - Appox. 6,065 SF Warehouse
- 18' Clear Height
- 2 Dock High Doors
- Sublease Term Through 12/31/2025
- Easy Access to Hwy 161, Hwy 121
- Close Proximity to DFW Airport



6005 Commerce Dr | Irving, TX 75063

Floor Plan & Property Photos



Although information has been obtained from sources deemed reliable, neither Owner nor JLL makes any guarantees, warranties or representations, express or implied, as to the completeness or accuracy as to the information contained herein. Any projections, opinions, assumptions or estimates used are for example only. There may be differences between projected and actual results, and those differences may be material. The Property may be withdrawn without notice. Neither Owner nor JLL accepts any liability for any loss or damage suffered by any party resulting from reliance on this information. If the recipient of this information has signed a confidentiality agreement regarding this matter, this information is subject to the terms of that agreement. © 2024 Jones Lang LaSalle IP, Inc. All rights reserved.