



For Sublease

3737 W Miller Road | Garland, TX 75041

472,200 SF Available



Melissa Holland

Senior Managing Director
melissa.holland@jll.com
(469) 358-3013

Chris Stout, SIOR

Executive Vice President
chris.stout@jll.com
(214) 207-1007

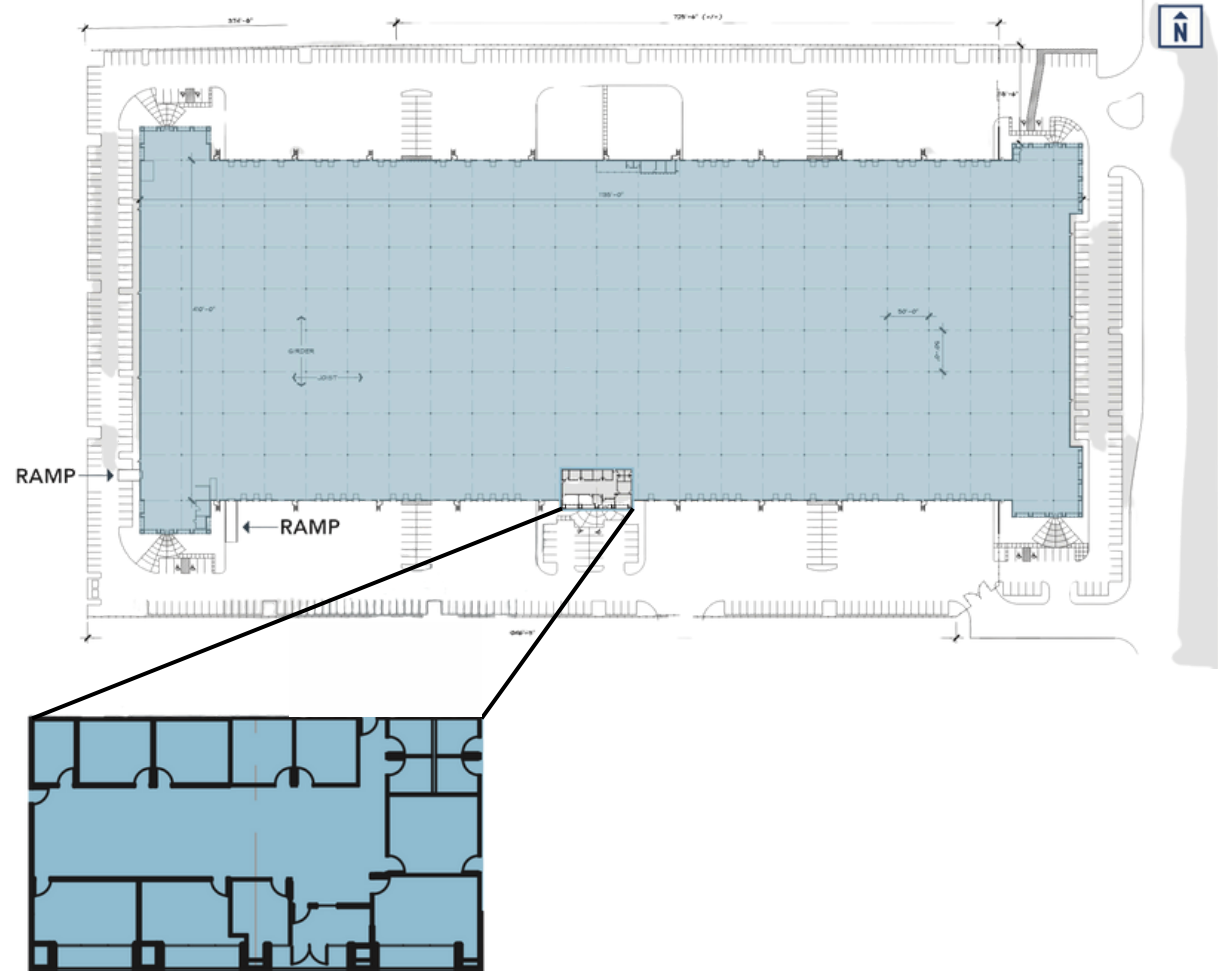
Kodie Comby

Vice President
kodie.comby@jll.com
(214) 438-6192

3737 W Miller Road | Garland, TX 75041

Property Specifications & Site Plan

- 472,200 SF Warehouse Available
- Flexible Terms
- 30' Clear Height
- Cross Dock
- LED Lighting
- BAF's
- 50x50 Column Spacing with 60' speed bays
- 32 Dock High Doors with levelers
- Abundant Parking
- Convenient access to major thoroughfares (I-635, US-75, and George Bush Turnpike)
- Sublease term through 7/31/29

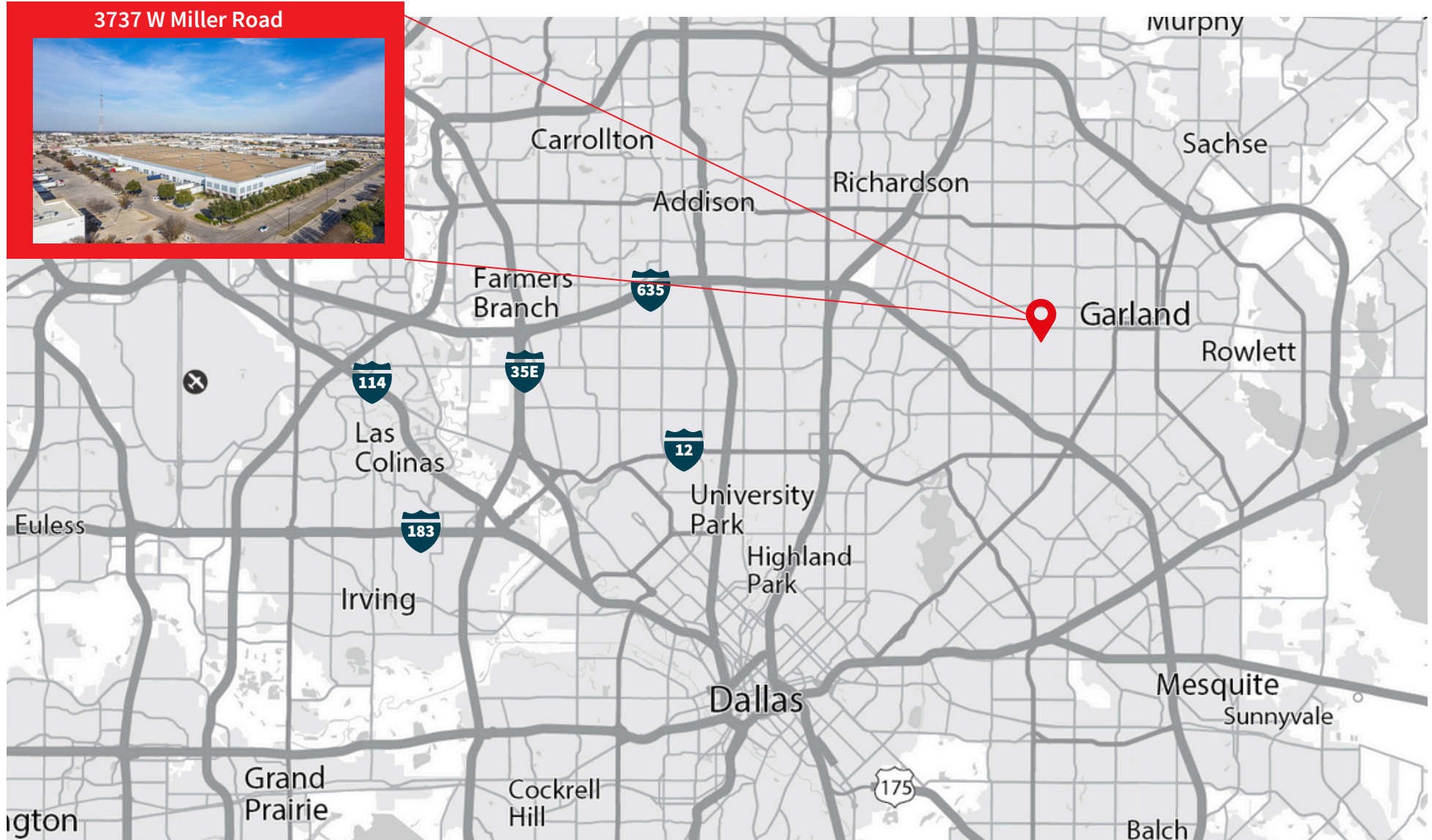


3737 W Miller Road | Garland, TX 75041

Property & Space Photos



3737 W Miller Road | Garland, TX 75041



3737 W Miller Road



Although information has been obtained from sources deemed reliable, neither Owner nor JLL makes any guarantees, warranties or representations, express or implied, as to the completeness or accuracy as to the information contained herein. Any projections, opinions, assumptions or estimates used are for example only. There may be differences between projected and actual results, and those differences may be material. The Property may be withdrawn without notice. Neither Owner nor JLL accepts any liability for any loss or damage suffered by any party resulting from reliance on this information. If the recipient of this information has signed a confidentiality agreement regarding this matter, this information is subject to the terms of that agreement. © 2024 Jones Lang LaSalle IP, Inc. All rights reserved.

Melissa Holland
Senior Managing Director
melissa.holland@jll.com
(469) 358-3013

Chris Stout, SIOR
Executive Vice President
chris.stout@jll.com
(214) 207-1007

Kodie Comby
Vice President
kodie.comby@jll.com
(214) 438-6192