



For Lease

18,564 SF on 3.57 Acres

2210 Hightower Drive | Garland, Texas 75041

Available Immediately



JLL Contacts

Caleb McCoy, SIOR
Managing Director
+1 214 949 2084
caleb.mccoy@jll.com

Paul Davis
Associate
+1 214 808 1519
paul.davis2@jll.com

Jones Lang LaSalle Brokerage Inc.



Property Specifications

Main Building

- ±18,564 SF Tilt Wall Building
- ± 6,500 SF Office

Secondary Structure

- ± 250 SF Guard Shack (west side of site)

Acreage

- 3.57

Clear Height

- 20'

Loading

- (4) 10' W x 12' H Grade-Level Doors
- (2) 16' W x 16' H Grade-Level Doors

Column Spacing

- 34' x 22'

Yard Base

- Fully Concrete

Yard Security

- Chain Link Fence with Barbed Wire Arms, Automatic Gate, Fully Lit, Guard Shack

Power

- Heavy

Lighting

- Metal Halide

Parking

- 30 Car Parks
- 56 Trailer Parks

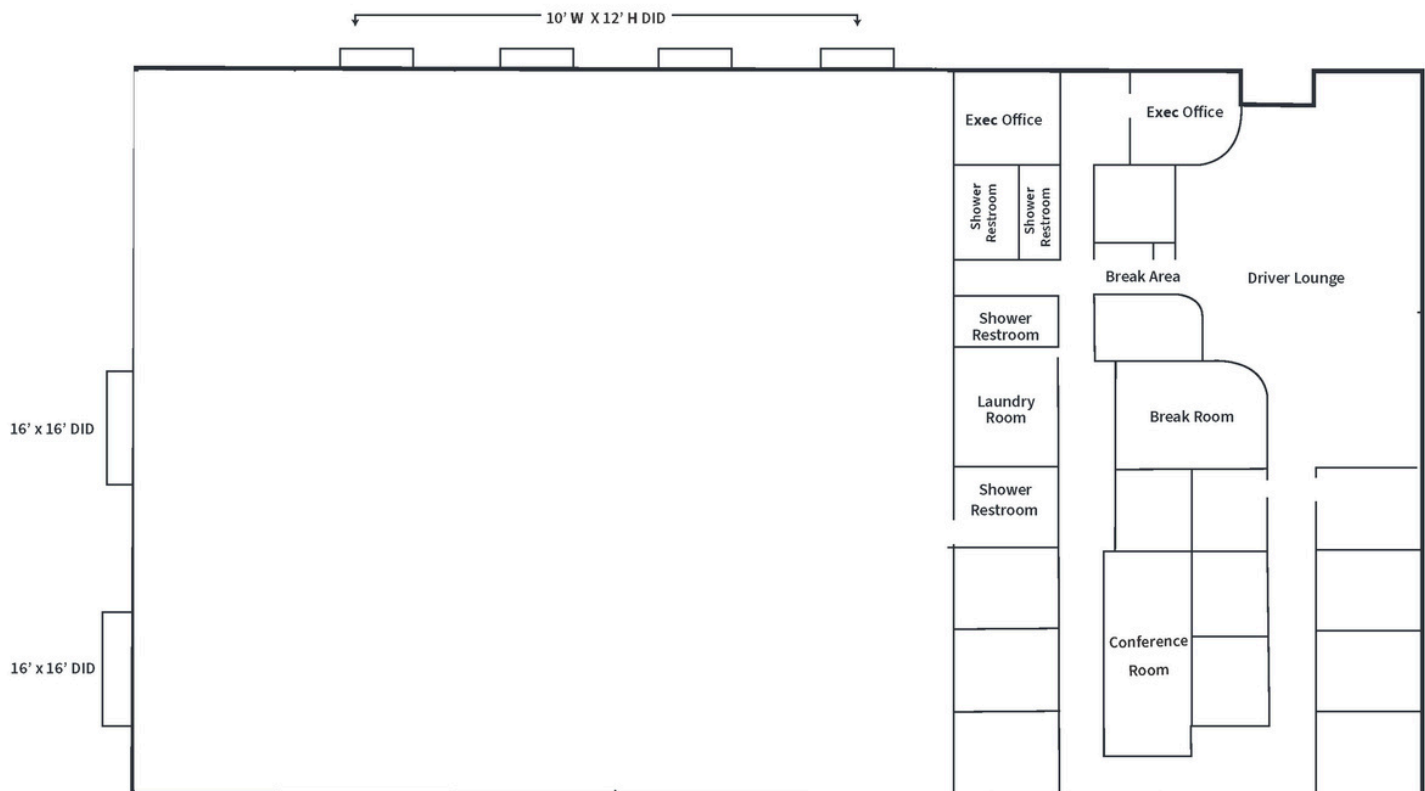
Sprinklers / Fire Suppression

- Yes - Class IV

Adjacent Land

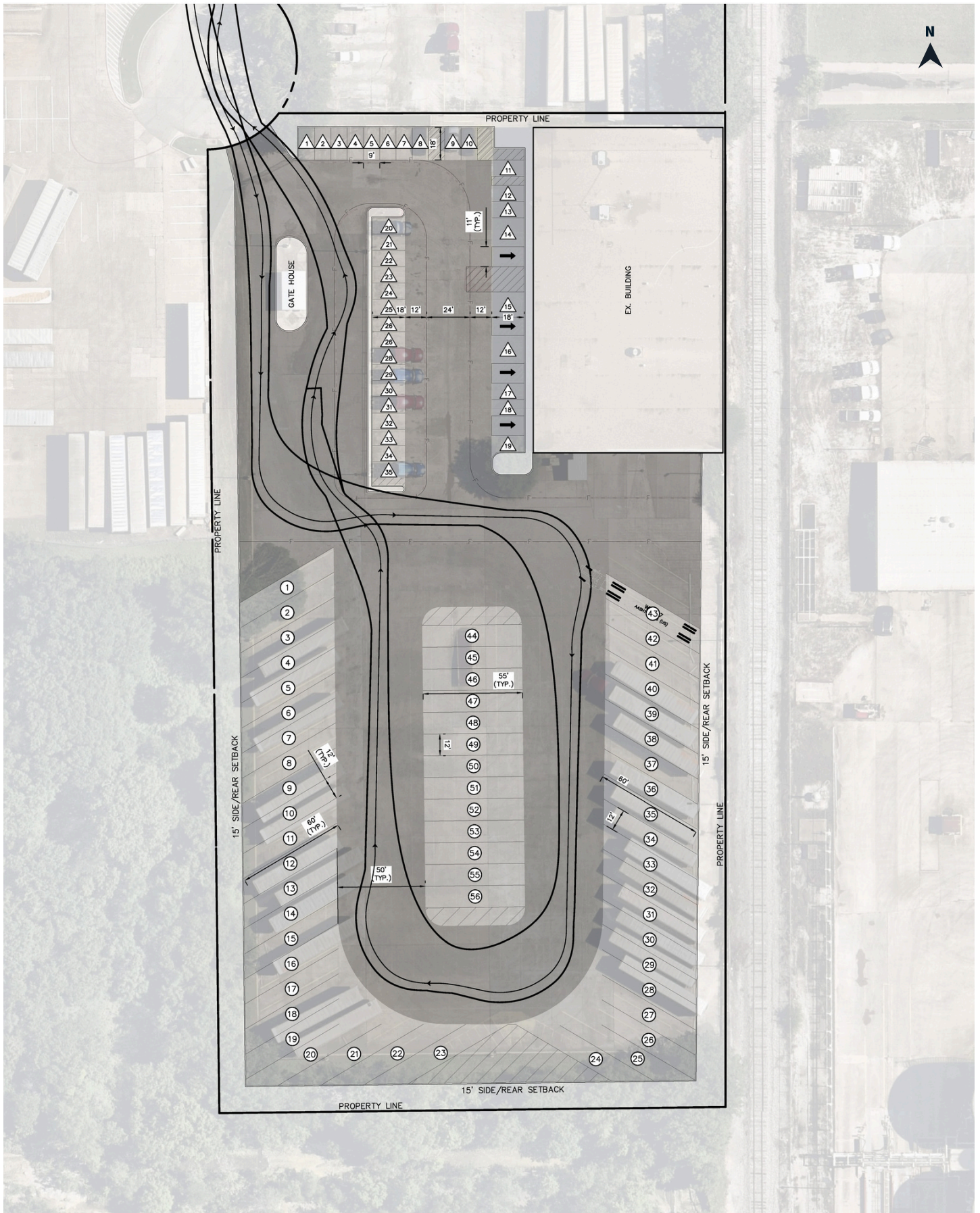
- Landlord willing to pave 2 additional acres

Floor Plan





Trailer Flow





Main Entry



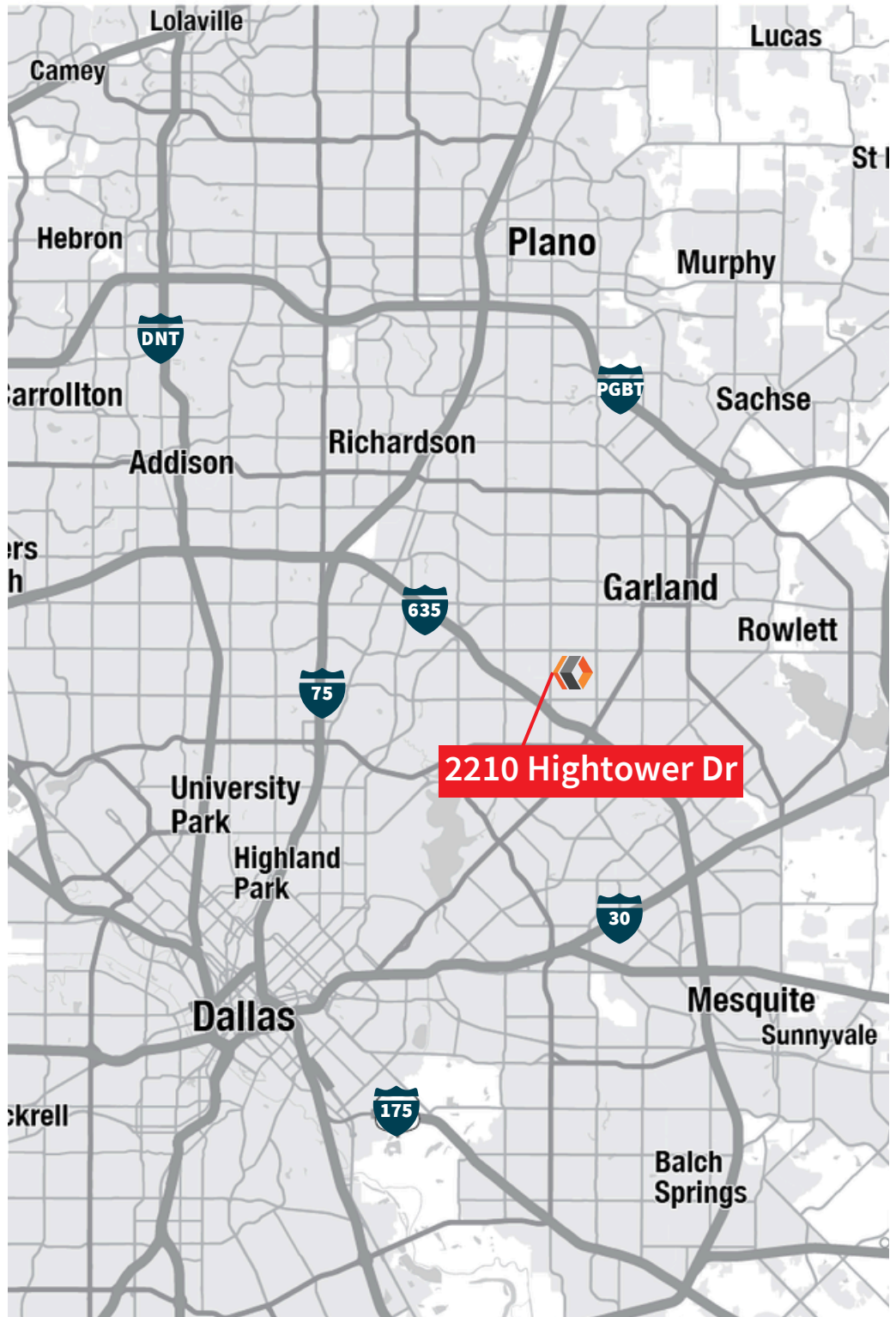
Side Loading



Rear Loading



Interior



Caleb McCoy, SIOR
Managing Director
+1 214 949 2084
caleb.mccoy@jll.com

Paul Davis
Associate
+1 214 808 1519
paul.davis2@jll.com

Jones Lang LaSalle Brokerage Inc.

Although information has been obtained from sources deemed reliable, neither Owner nor JLL makes any guarantees, warranties or representations, express or implied, as to the completeness or accuracy as to the information contained herein. Any projections, opinions, assumptions or estimates used are for example only. There may be differences between projected and actual results, and those differences may be material. The Property may be withdrawn without notice. Neither Owner nor JLL accepts any liability for any loss or damage suffered by any party resulting from reliance on this information. If the recipient of this information has signed a confidentiality agreement regarding this matter, this information is subject to the terms of that agreement. ©2023 Jones Lang LaSalle IP, Inc. All rights reserved.