



Confidential Offering

Sublease

Fully Operational Car Wash

3330 Central Parkway
Cincinnati, OH 45225

4,984 RSF Available

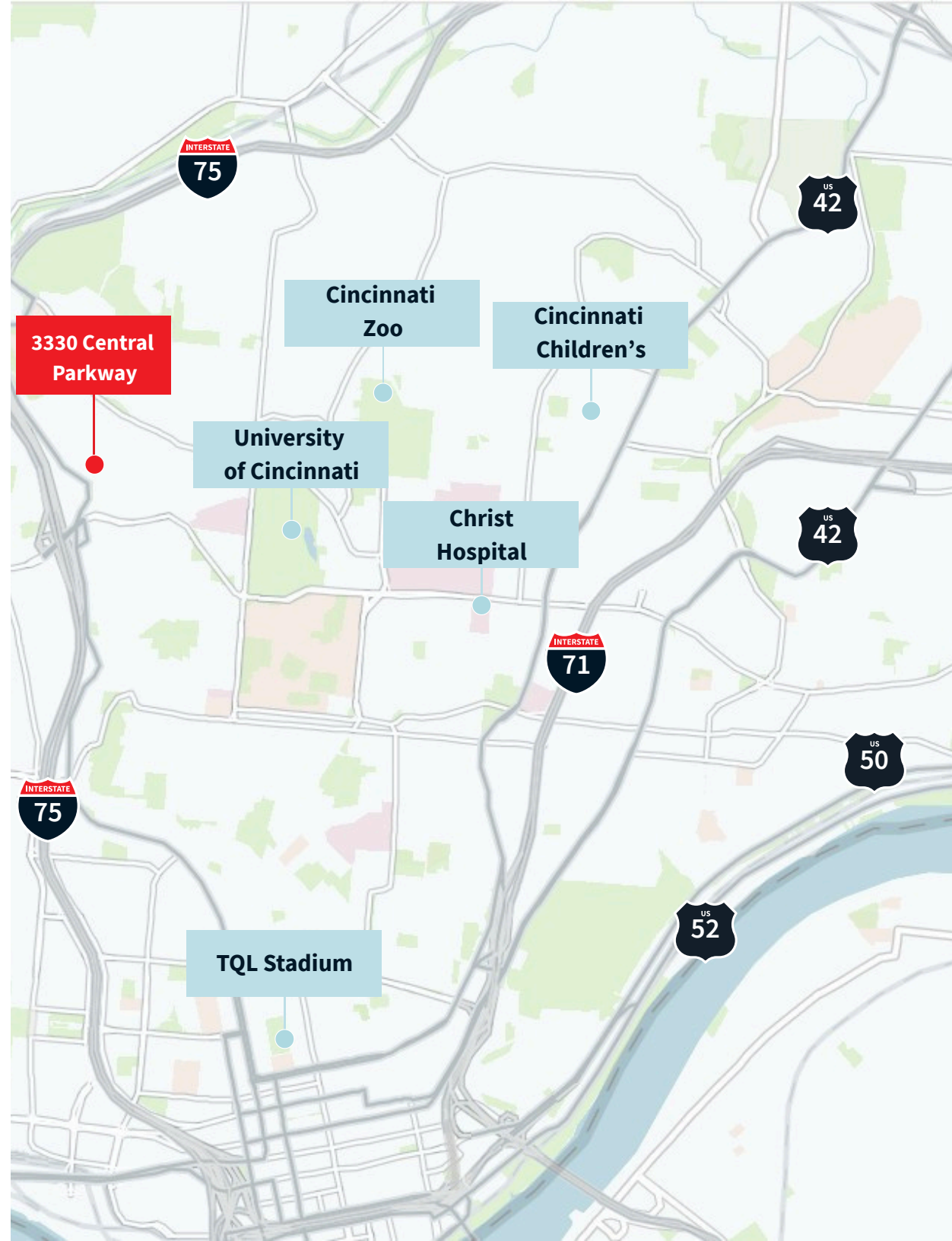
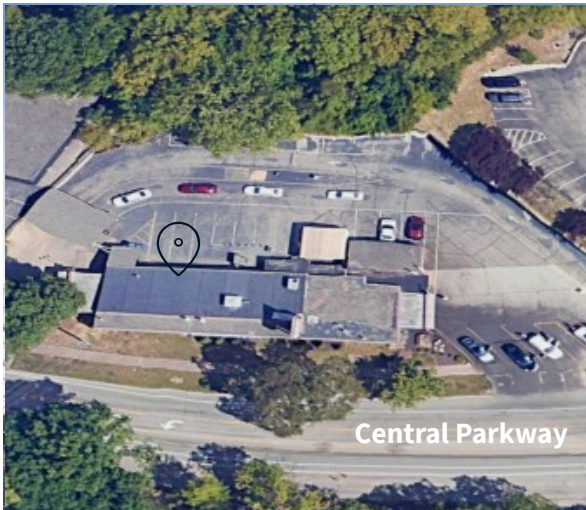
 **JLL** SEE A BRIGHTER WAY

Location Overview

3330 Central Parkway

Strategically located in Cincinnati's Mill Creek Valley submarket. The location provides efficient freight access, connectivity to downtown Cincinnati and northern suburbs, and serves as a cost-effective alternative to premium submarkets.

 Excellent I-75 access via Central Parkway.



Thank you

About JLL

For over 200 years, JLL (NYSE: JLL), a leading global commercial real estate and investment management company, has helped clients buy, build, occupy, manage and invest in a variety of commercial, industrial, hotel, residential and retail properties. A Fortune 500® company with annual revenue of \$20.9 billion and operations in over 80 countries around the world, our more than 103,000 employees bring the power of a global platform combined with local expertise. Driven by our purpose to shape the future of real estate for a better world, we help our clients, people and communities SEE A BRIGHTER WAYSM. JLL is the brand name, and a registered trademark, of Jones Lang LaSalle Incorporated. For further information, visit jll.com.

Todd Pease

Senior Vice President
todd.pease@jll.com +44
(513 2905408)