



CENTRE  
POINTE



## A PREMIER OFFICE PARK

In The Center of Southwestern Ohio

[centrepointecincinnati.com](http://centrepointecincinnati.com)

Now Leasing



Hines

# WELCOME TO CENTRE POINTE

Centre Pointe is a logical choice for corporate executives due to its superior accessibility, the strong local labor force and plentiful amenities.



Immediate access to / from I-75



Free parking for all tenants and guests



Nicely appointed common areas



Plenty of amenities within walking distance



Strong and stable ownership and property management



Between two international airports and two regional airports



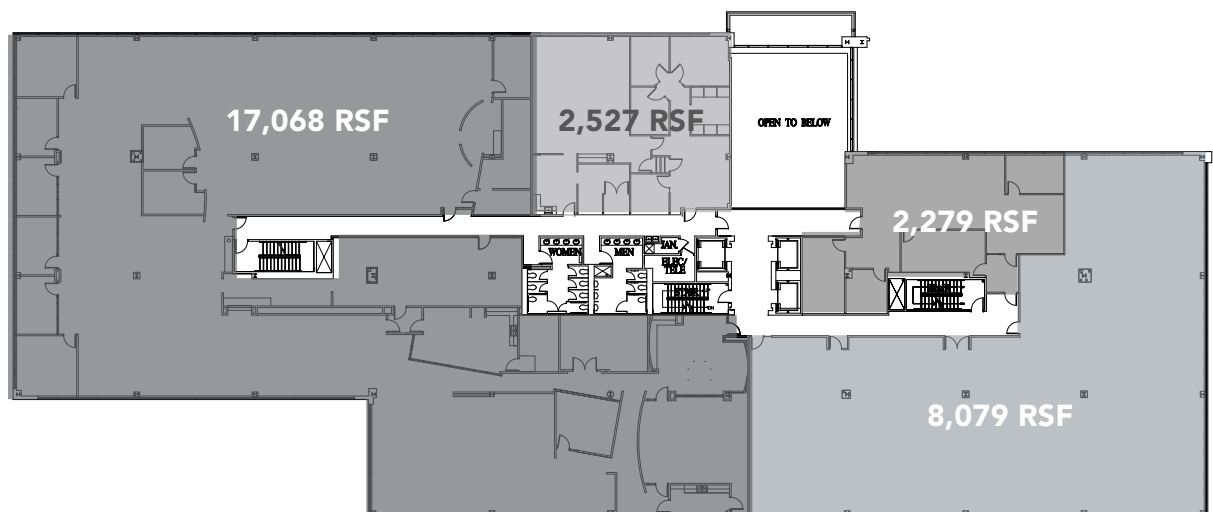
Common Conference Center on site



Workout Facility on site



Centre Pointe  
sample layout:



[Click to view availabilities](#)

# TIME + PLACE

More than 3,000 companies choose to do business in West Chester, OH due to the community's diverse and sustainable economy.

## Live. Work. Play.



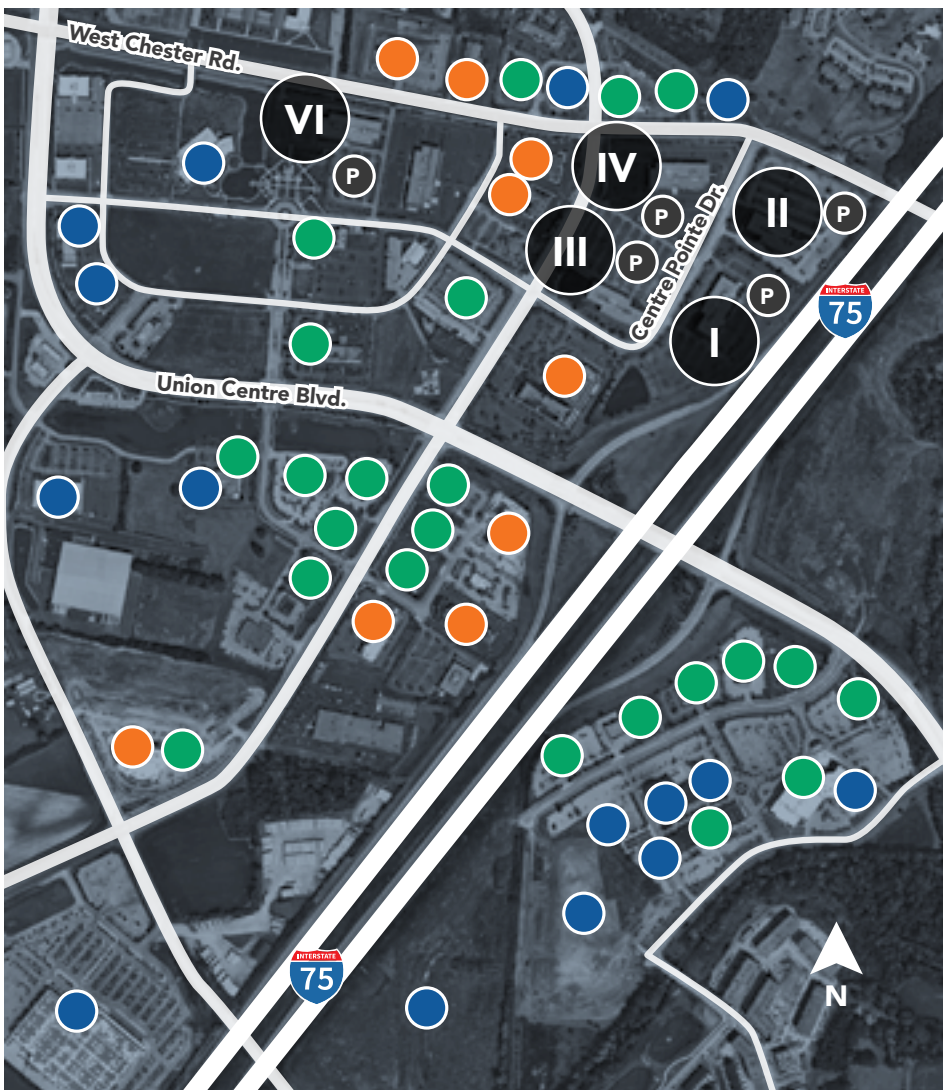
West Chester, OH is continuously ranked one of the Best Places to Live in America and is the largest Township in Ohio with a population over 60,500.

## Strong Labor Force



**71%** of the labor force work in typical "white collar" jobs, while 52% of the West Chester population hold a post-secondary degree.

*Source: West Chester Township*



FOOD + DRINKS



LODGING



OTHER AMENITIES

**BARNES  
& NOBLE**

**LA | FITNESS.**

**Panera  
BREAD®**

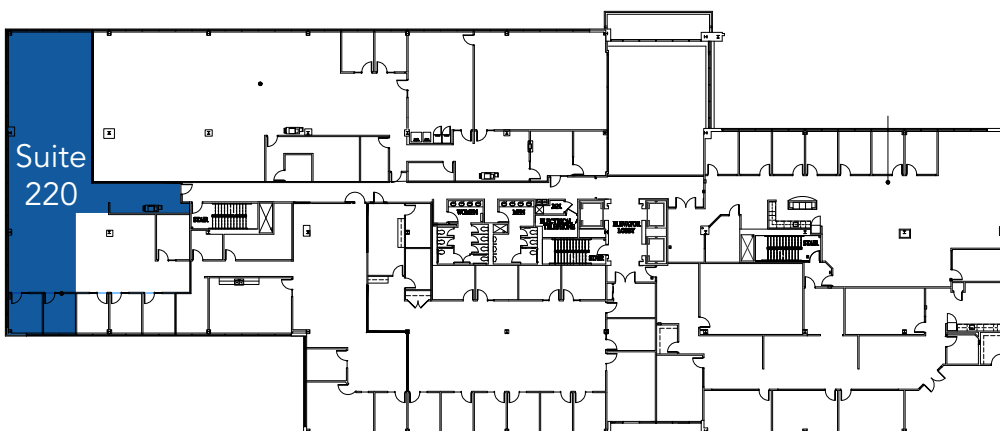
**P.F. CHANG'S  
CHINA BISTRO**



**CENTRE POINTE I - 9100 CENTRE POINTE DR**



**Floor 1**  
Suite 100:  
4,204 SF



# FLOOR PLANS

## CENTRE POINTE III - 9075 CENTRE POINTE DR

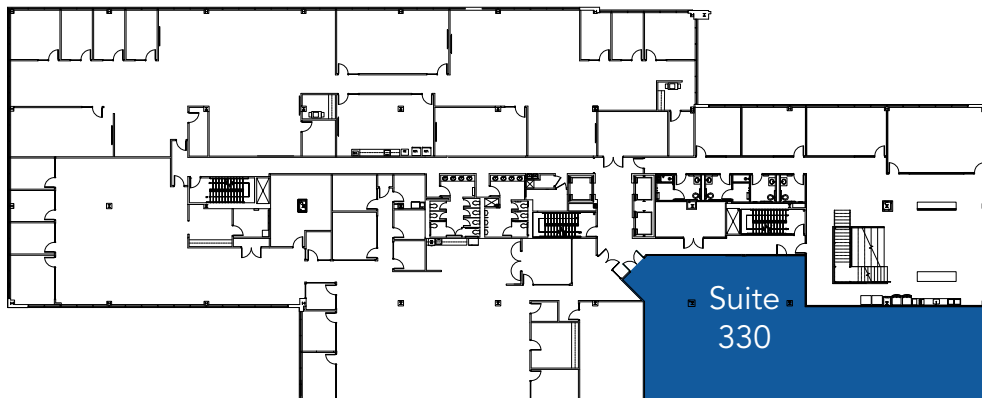
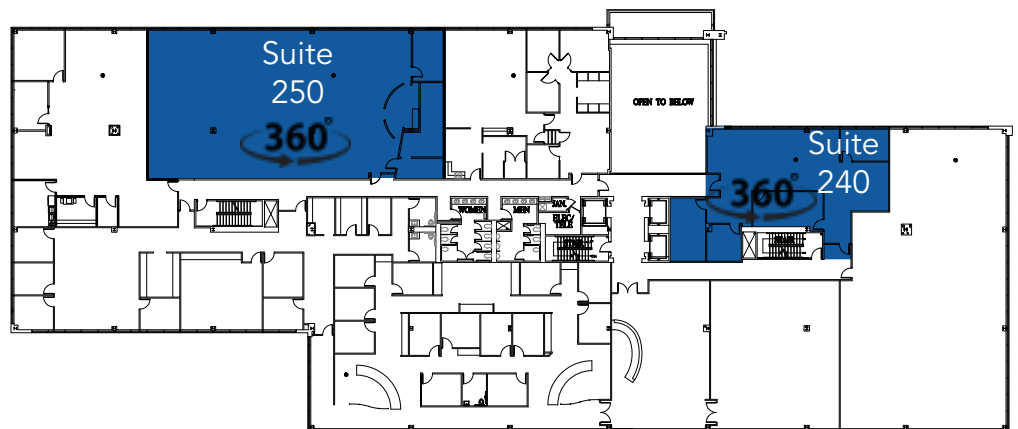


### Floor 1

Office Park  
Conference Room

Suite 140:  
10,245 SF

**Floor 2**  
Suite 240:  
2,279 SF  
  
Suite 250:  
4,637 SF



### Floor 3

Suite 330:  
4,608 SF

# FLOOR PLANS

## CENTRE POINTE IV - 9025 CENTRE POINTE DR

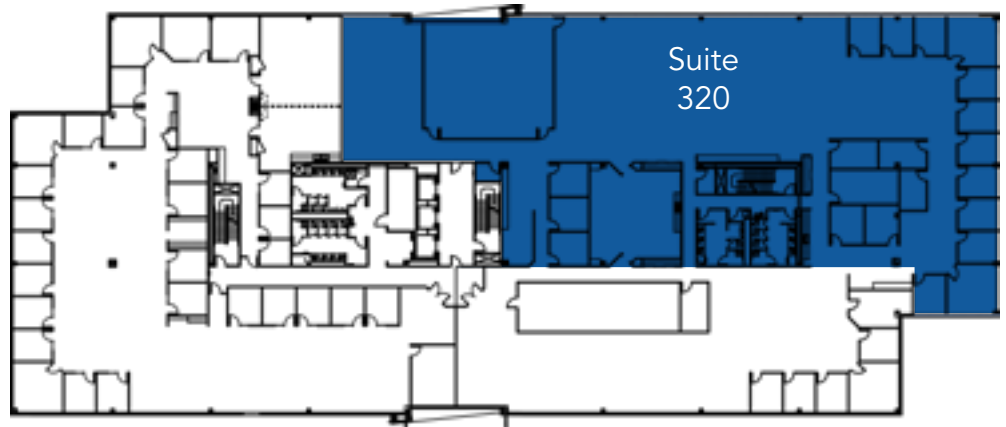


### Floor 1

Suite 110:  
2,207 SF

### Floor 3

Suite 320:  
16,199 SF

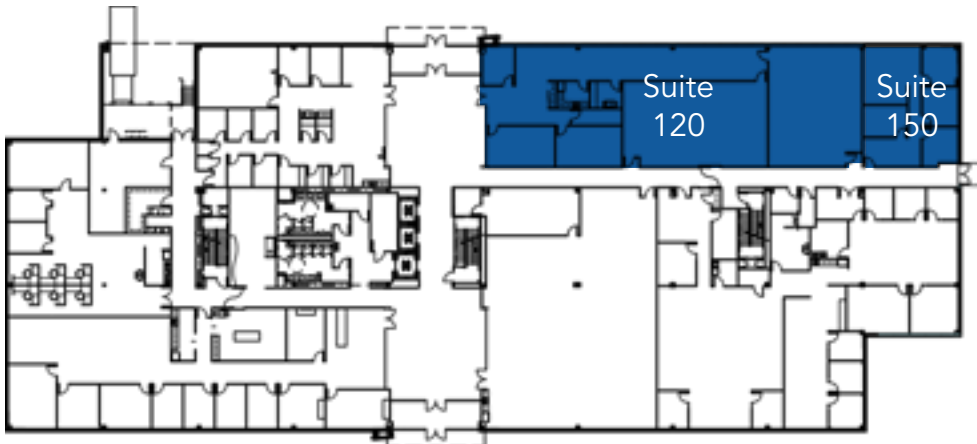


### Floor 4

Suite 450:  
6,319 SF

# FLOOR PLANS

## CENTRE POINTE VI - 9277 CENTRE POINTE DR

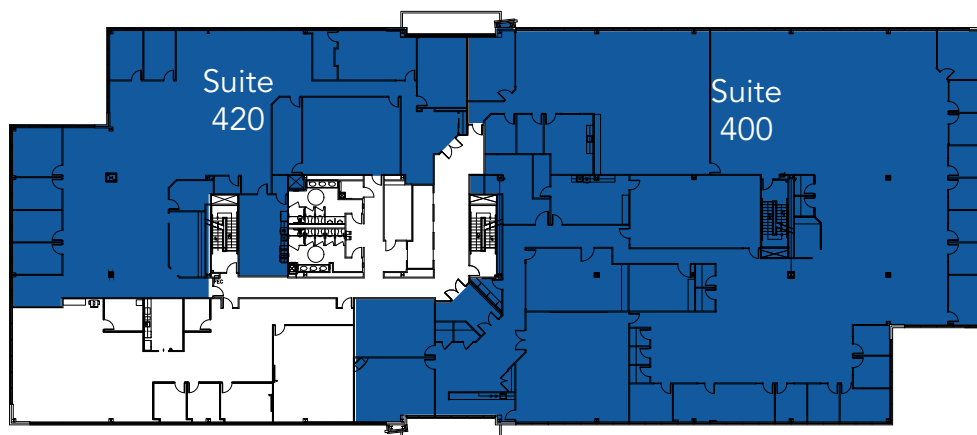
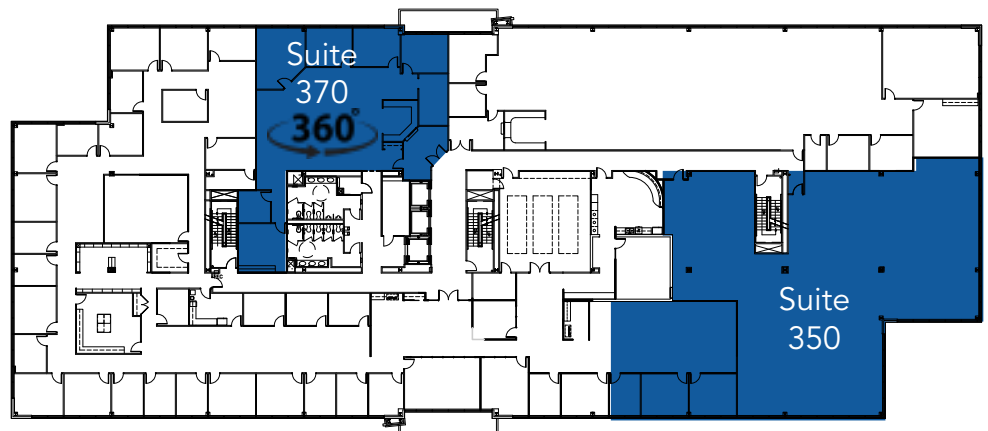


### Floor 1

Suite 120:  
5,230 SF

Suite 150:  
1,333 SF  
Available 12/1/25

**Floor 3**  
Suite 350:  
8,128 SF  
  
Suite 370:  
3,538 SF



### Floor 4

Suite 400:  
Leased but available  
22,008 SF

Suite 420:  
Leased but available  
9,174 SF



CENTRE  
POINTE

## Questions? Please contact:

**Todd Pease**

Senior Vice President  
+1 513 297 2506  
todd.pease@jll.com

**Michelle Klingenberg**

Senior Vice President  
+1 513 719 3703  
michelle.klingenberg@jll.com

**Rusty Myers**

Executive Vice President  
+1 513 252 2158  
rusty.myers@jll.com



Hines