

**HLC**

HAMPTON LOGISTICS CENTER

FOR LEASE**Two Class A
Logistics Buildings****506,559 SF Total****Building 1: Complete****Building 2: Delivery Q4 2025**

Hampton Logistics Center

Building #1 1012 North Campus Parkway, Hampton VA 23666**Building #2** 1008 North Campus Parkway, Hampton VA 23666

SIZE	Building 1 - 230,874 SF Building 2 - 275,685 SF	LOADING	Building 1 - 46 Dock Doors and 2 Grade Building 2 - 57 Dock Doors and 2 Grade
LAND	31.9 acres	FLOORING	7" Concrete system
TYPE	Rear-loaded industrial	HEATING	Gas (Cambridge units)
CEILING	36' clear	SPRINKLERS	ESFR sprinklers with K25 heads
DEPTH	268 Ft.	OFFICE	Glass storefront adjacent to parking
TRUCK COURT	185 Ft.	LOCATION	North Campus Pkwy. and Neil Armstrong Pkwy, Hampton, VA
COLUMNS	52'x52' with 60' speed bay	DESIGNATIONS	LEED® Gold
PARKING	1 Car park per 1,500 SF 1 Truck park per 4,700 SF		

Website

LEASING BY

Gregg Christoffersen

Managing Director

757 348 1477

gregg.christoffersen@jll.com

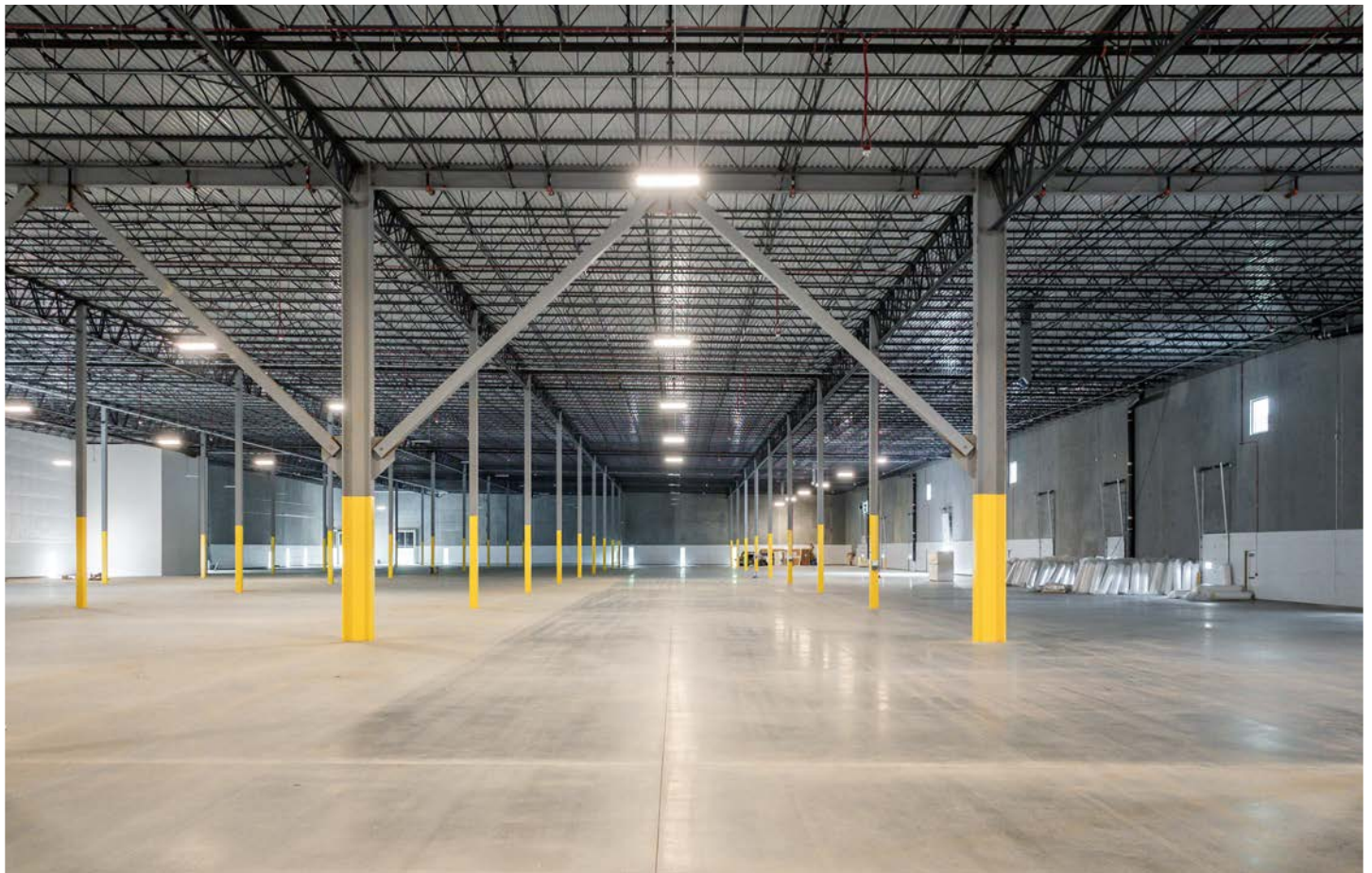
Todd Scholsohn

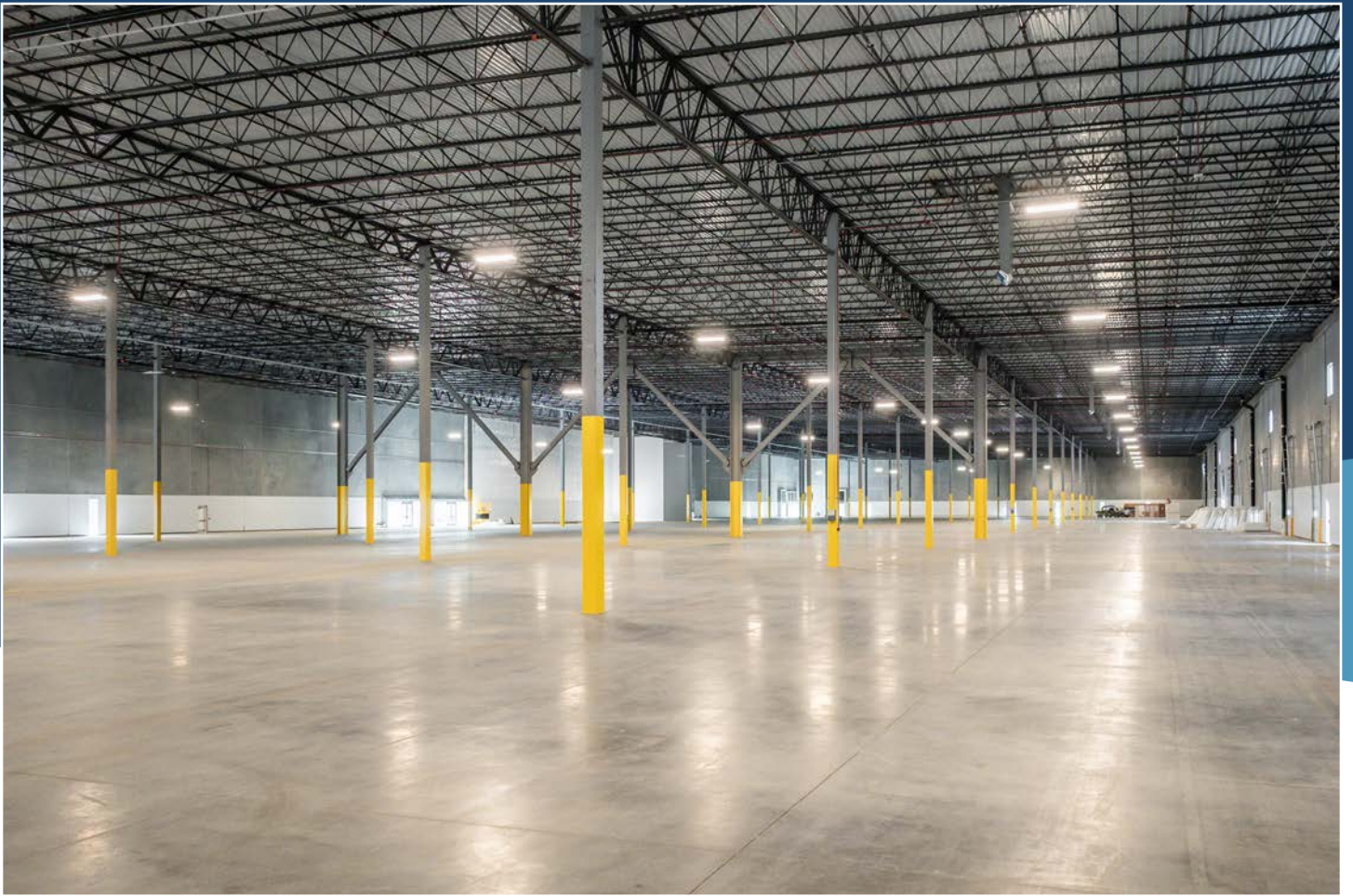
Senior Associate

757 938 1562

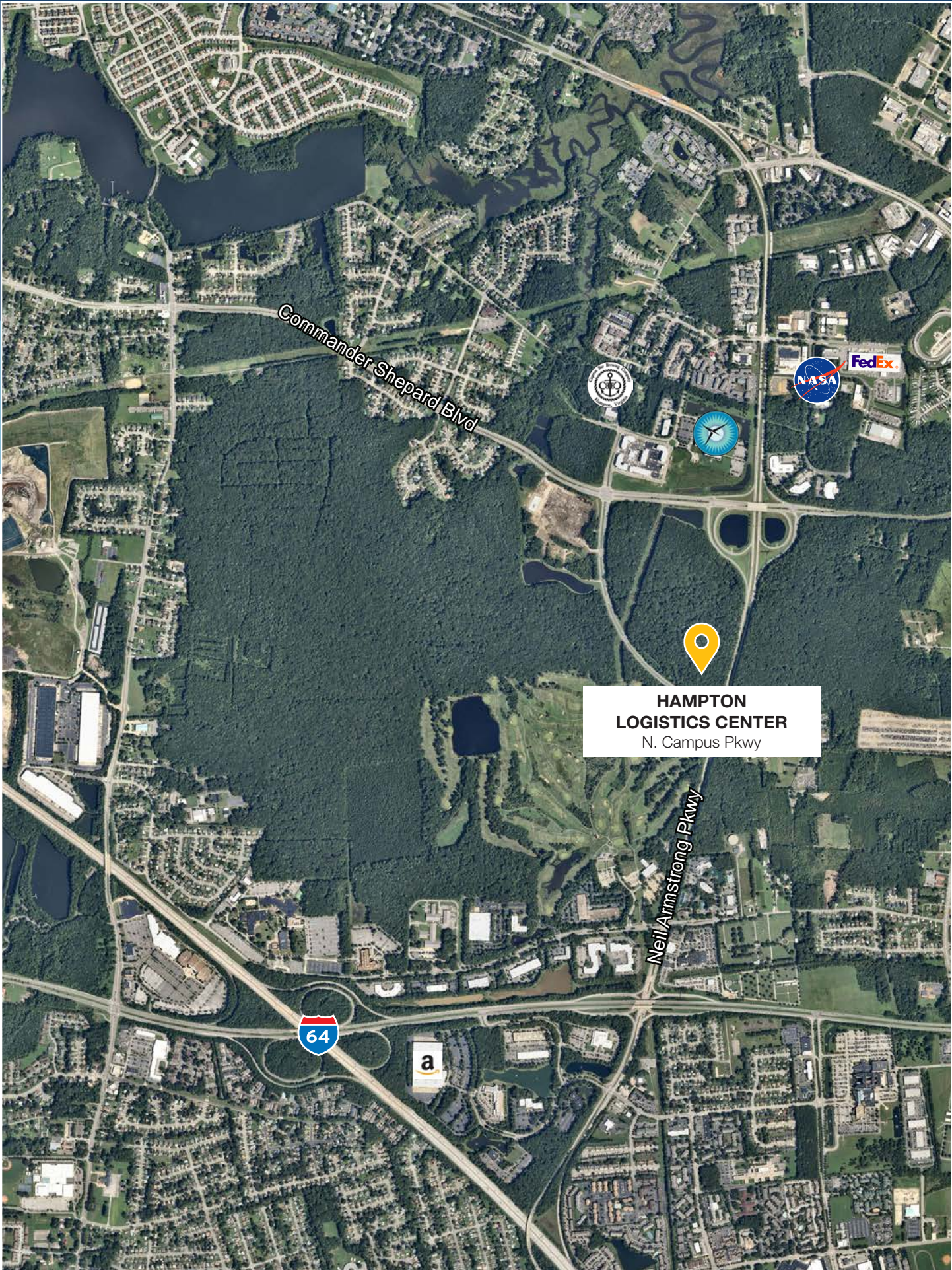
todd.scholsohn@jll.com

Visit website: www.hamptonlogisticscenter.com





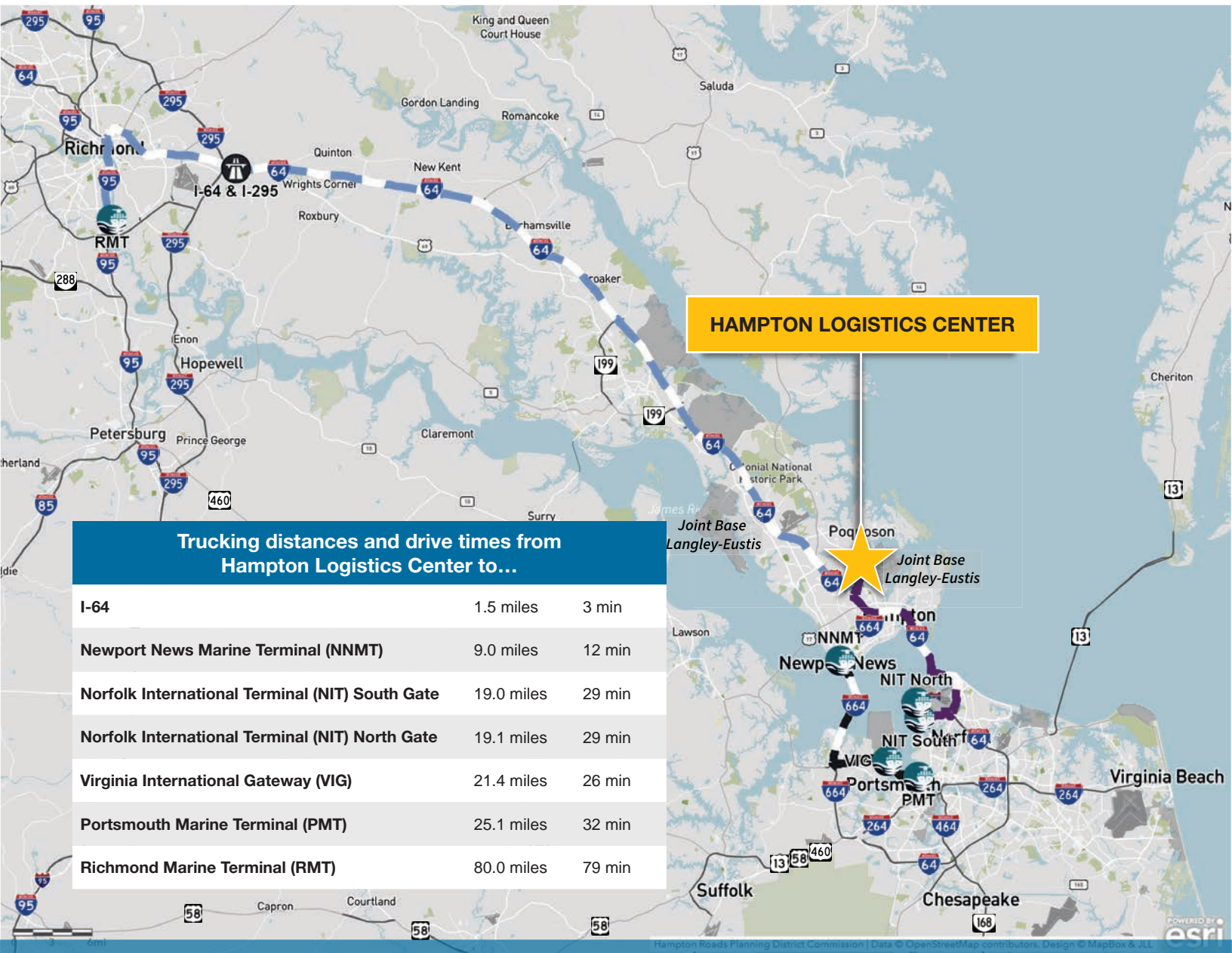




**HAMPTON
LOGISTICS CENTER**
N. Campus Pkwy

Hampton Logistics Center

North Campus Pkwy., and Neil Armstrong Pkwy.,
Hampton, VA 23666



GREGG CHRISTOFFERSEN
Managing Director
757 348 1477
gregg.christoffersen@jll.com

TODD SCHOLSOHN
Senior Associate
757 938 1562
todd.scholsohn@jll.com

LEASING BY
JLL

DEVELOPED BY
MANEKIN
TURNBRIDGE
EQUITIES

Although information has been obtained from sources deemed reliable, JLL does not make any guarantees, warranties or representations, express or implied, as to the completeness or accuracy as to the information contained herein. Any projections, opinions, assumptions or estimates used are for example only. There may be differences between projected and actual results, and those differences may be material. JLL does not accept any liability for any loss or damage suffered by any party resulting from reliance on this information. If the recipient of this information has signed a confidentiality agreement with JLL regarding this matter, this information is subject to the terms of that agreement.
©2025 Jones Lang LaSalle Brokerage, Inc. All rights reserved.