

1502 N 25TH AVENUE

CHICAGO
NEAR WEST SUBURBS

1502 N 25th Avenue, Unit C
Melrose Park, IL 60160



FOR LEASE

±52,319 SF

UNIT C



LEASED BY





SPECIFICATIONS

Unit C Size	52,319 SF
Warehouse Size	49,649 SF
Office Size	2,670 SF
Loading Docks	4 Exterior Docks
Drive-In Doors	1 Drive-In Door
Clear Height	28'
Column Spacing	50' x 50'
Building Parking	140 Car Parking Stalls
Unit Parking	Pro Rata Share
Sprinkler	ESFR

With two international airports, six Class I railroads, seventeen intermodal facilities, and abundant interstate connectivity, Chicago boasts one of the most diverse transportation infrastructures in the US. Link Logistics' Chicagoland warehouse spaces provide access to these advantages with access to more than half of the US population within one- to two-day truck drive.

FOR LEASE

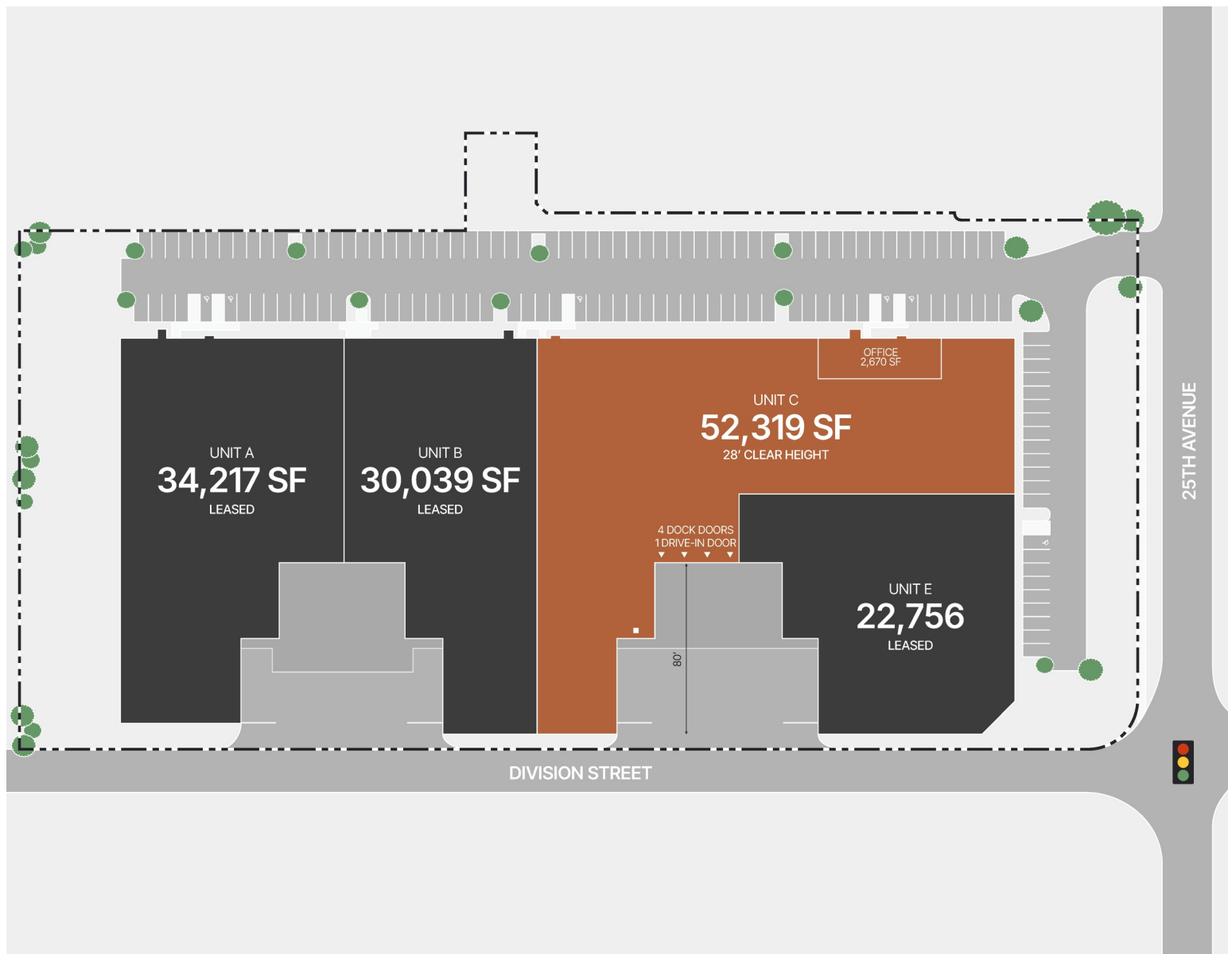
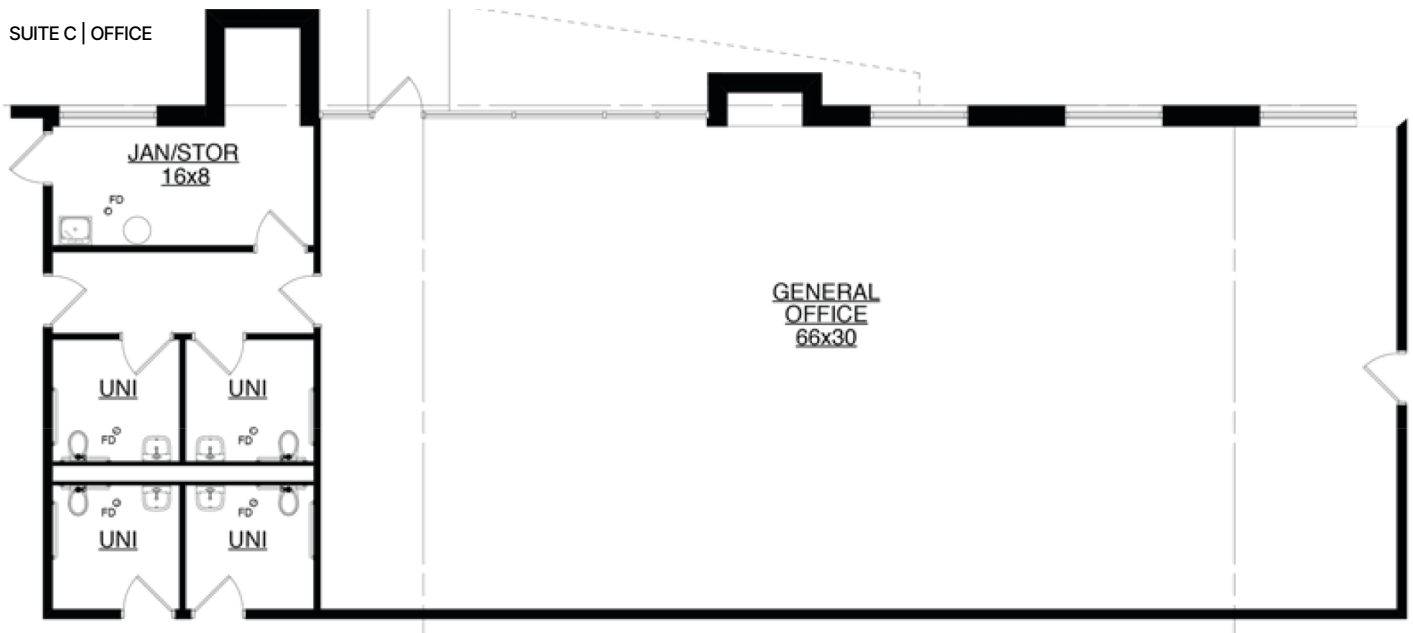
±52,319 SF

- I-290/-294 via North Ave: 3 Miles
- O'Hare International Airport: 7 Miles
- Downtown Chicago: 14 Miles
- Midway International Airport: 15 Miles



This is not an offer or acceptance of an offer to lease space. A lease will only be offered or made in a written agreement signed by landlord. No representation or warranty of any kind is made by landlord unless set forth in a written definitive lease executed by the landlord.

CHICAGO
NEAR WEST SUBURBS



Committed to Driving Value for Our Customers

Properties with a Competitive Edge

Our scale, proprietary data and local relationships allow our 1,200+ skilled team members to help customers stay ahead of market trends.

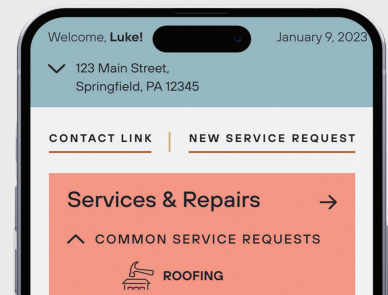


Best-in-Class Customer Service

Our on-the-ground regional teams provide you with local expertise, leveraging data-driven insights to find the right solutions for your business.

Link+

Our digital customer experience platform provides easy access to your property management teams, lease documents, billing and service requests. Sign up today!



500 Million
Square Foot
Portfolio

Energy Solutions

Our comprehensive energy and utility management program enables customers to achieve savings and access our in-house sustainability experts. Enroll through Link+.



CONTACT INFORMATION

1502 N 25th Avenue, Unit C
Melrose Park, IL 60160

Sam Durkin

sam.durkin@jll.com

(773) 343-4361

Senior Managing Director

This is not an offer or acceptance of an offer to lease space. A lease will only be offered or made in a written agreement signed by landlord. No representation or warranty of any kind is made by landlord unless set forth in a written definitive lease executed by the landlord.



LEASED BY

