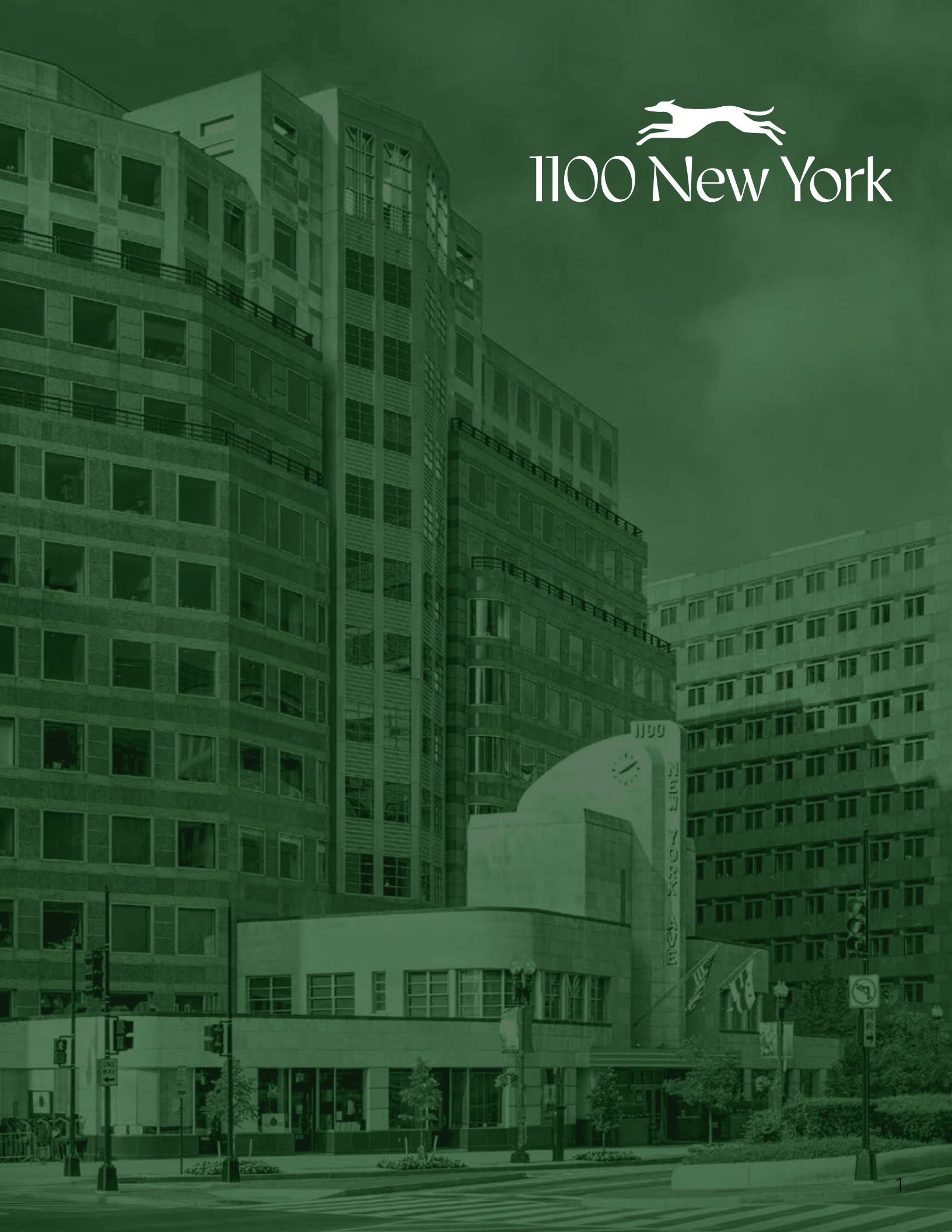




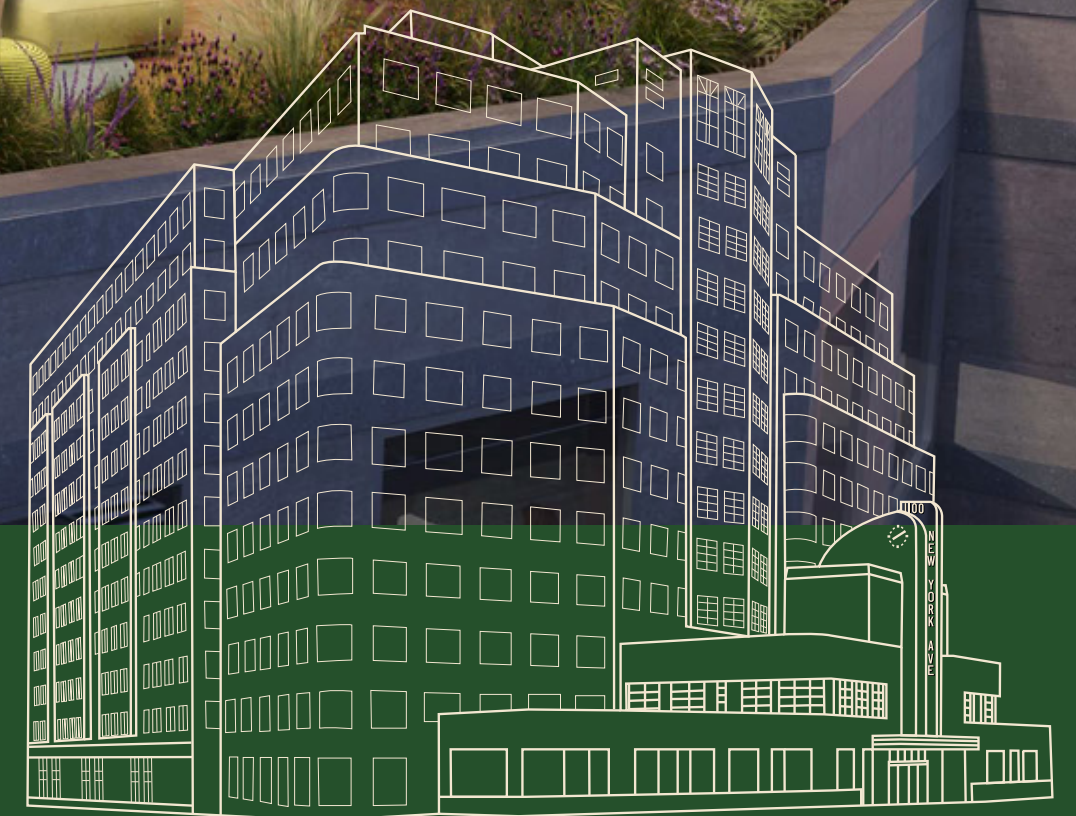
1100 New York





1100 New York

Our state-of-the-art office space boasts **cutting-edge renovations**, **unparalleled amenities**, and **panoramic views** of the city, making it the premier choice for forward-thinking business in the Nation's Capital.



Availabilities

ROOFTOP

FULLY
RENOVATED ROOFTOP
High-Ceiling Interior
Penthouse Entertainment
Spaces
coming soon



FULL-BUILDING
HEIGHT ATRIUM
Window line completely
surrounding central
full-building height
atrium allowing access
to daylight into all
interior office spaces
new atrium finishes
coming soon



SHARED
TENANT LOUNGE &
CONFERENCE CENTER
With open stairway from
lobby to 2nd floor
coming soon

NEW FITNESS & BIKE ROOM
with yoga studio and high
end locker rooms
coming soon

12

11

10

9

8

7

6

5

4

3

2

1

LL

19,422 RSF

FULL FLOOR
46,733 RSF
AVAIL. 7/1/26

SPEC SUITE 365
1,187 RSF

SUITE 350
13,500 RSF

SUITE 320
9,389 RSF

SUITE 220
2,025 RSF

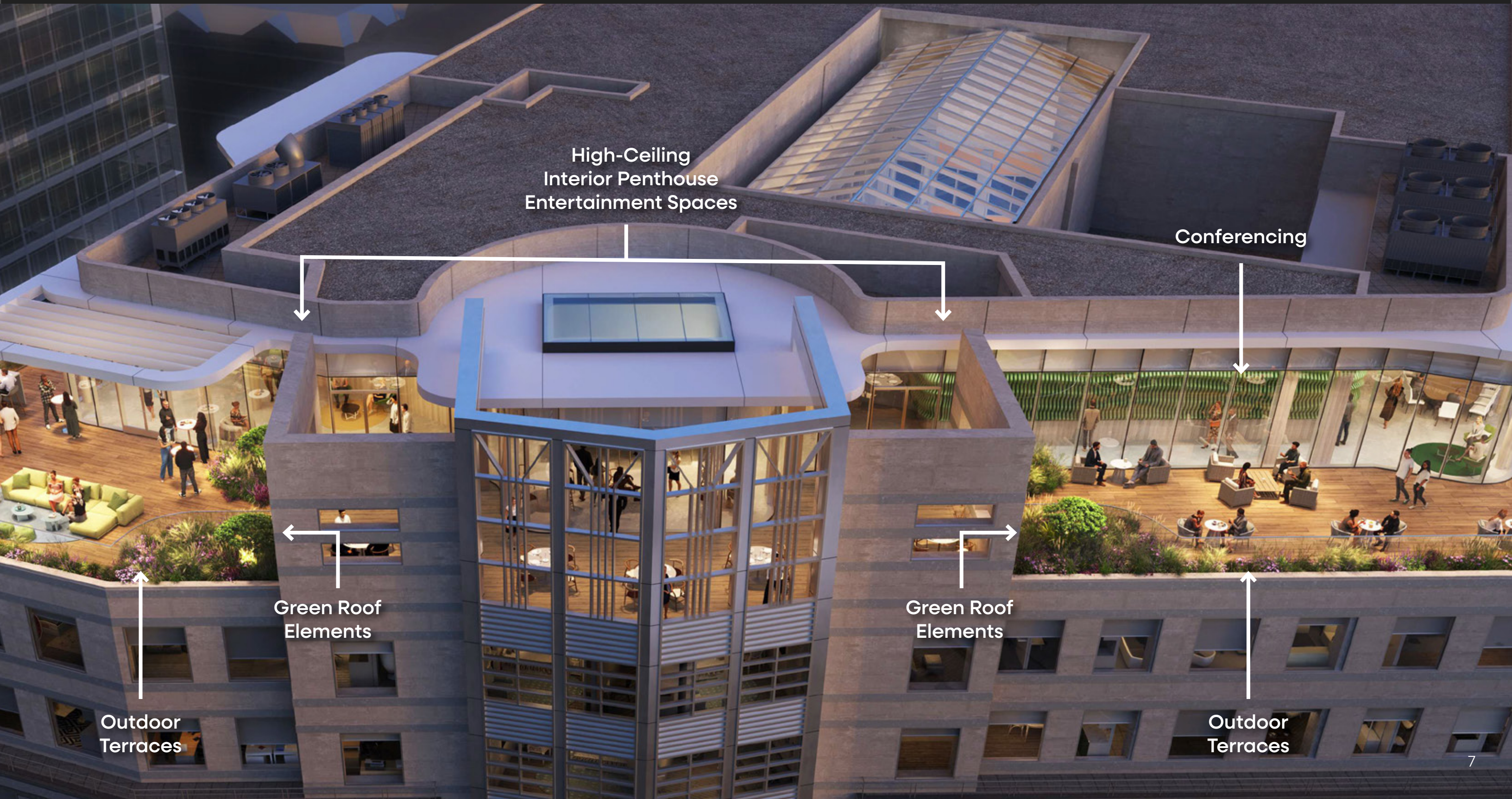
SUITE 200
7,422 RSF

LOUNGE &
CONFERENCE

FITNESS & BIKE ROOM

Massive Rooftop Renovations

Coming Soon

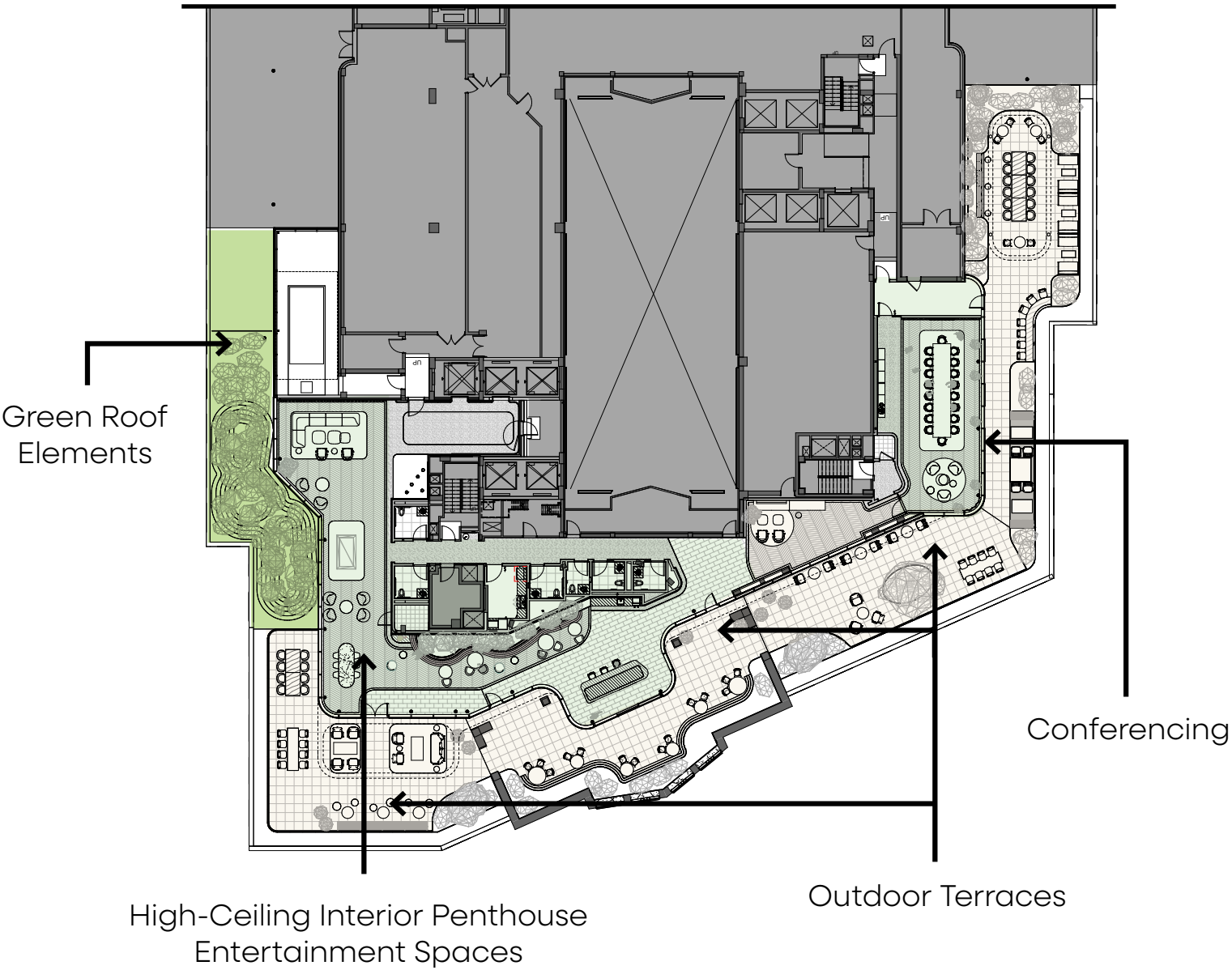


Massive Rooftop Renovations

Coming Soon



Rooftop Design



New Conference & Lounge

On second floor



CONFERENCE SPACE
ACCOMMODATES 200+



AMENITY LOUNGE



AMENITY LOUNGE



AMENITY SPACE STAIRWELL
CONNECTION TO LOBBY

CAFE



NEW
**ATRIUM
LIGHTING**

NEW
CAFE

NEW
**GLAZING +
SURROUND**
ON FLOORS 1+2

NEW
**REFINISHED
COLUMNS**

NEW
**STONE
FLOORING**

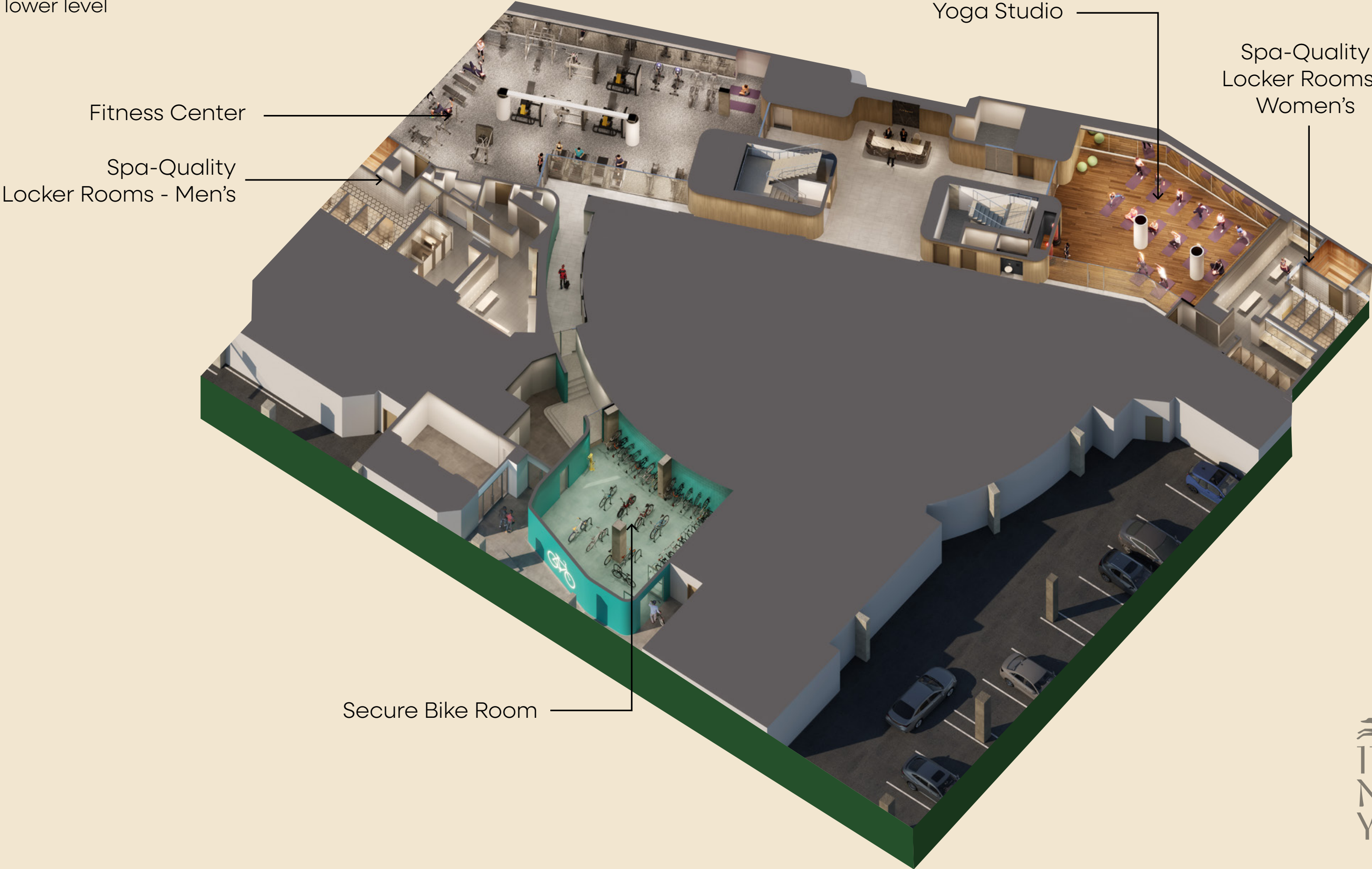
Huge Atrium Renovations

Stairwell leading to brand new tenant lounge & conference center on second floor



New Fitness & Bike Room

On lower level

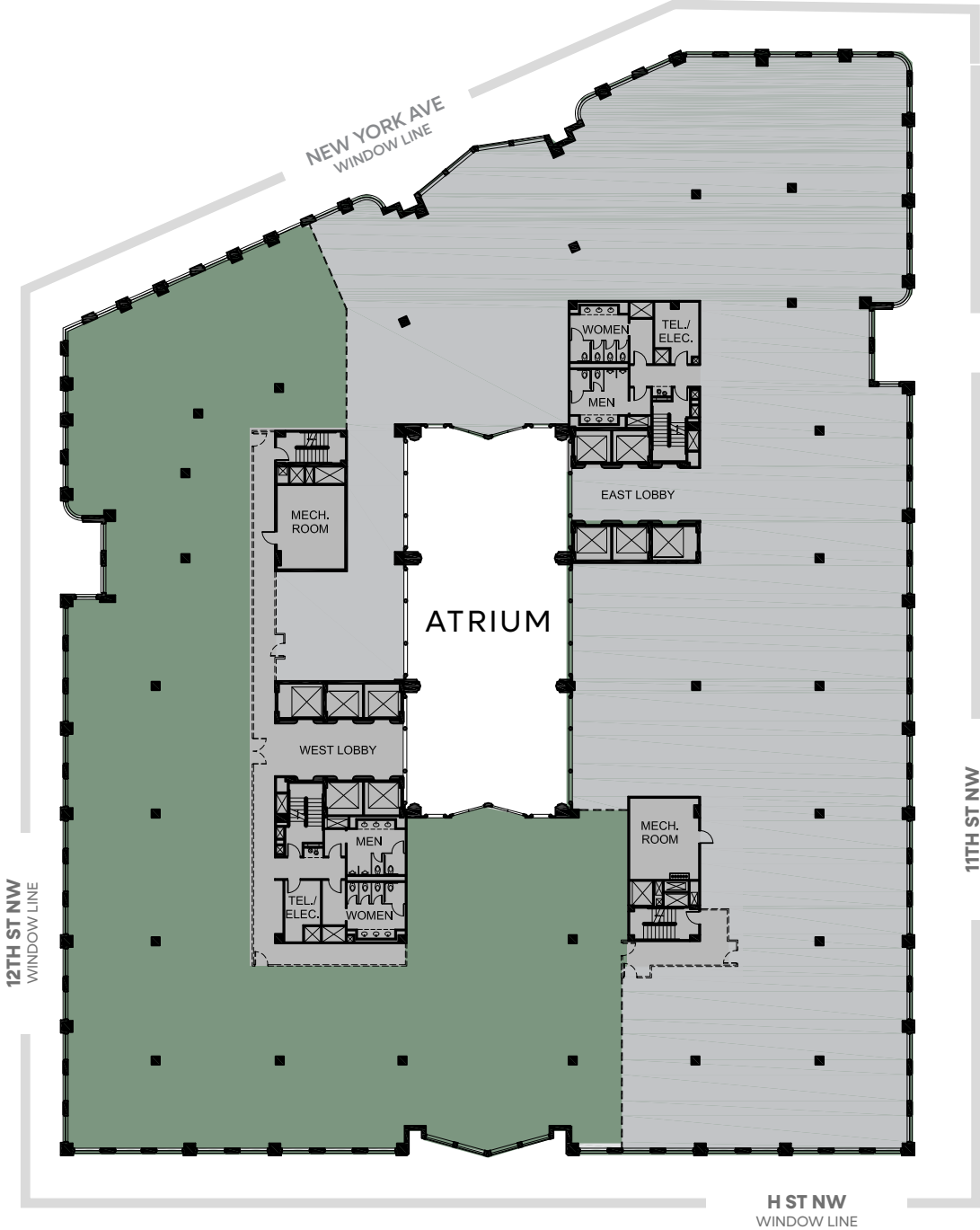


SOUTHWEST VIEWS
FROM ROOFTOP



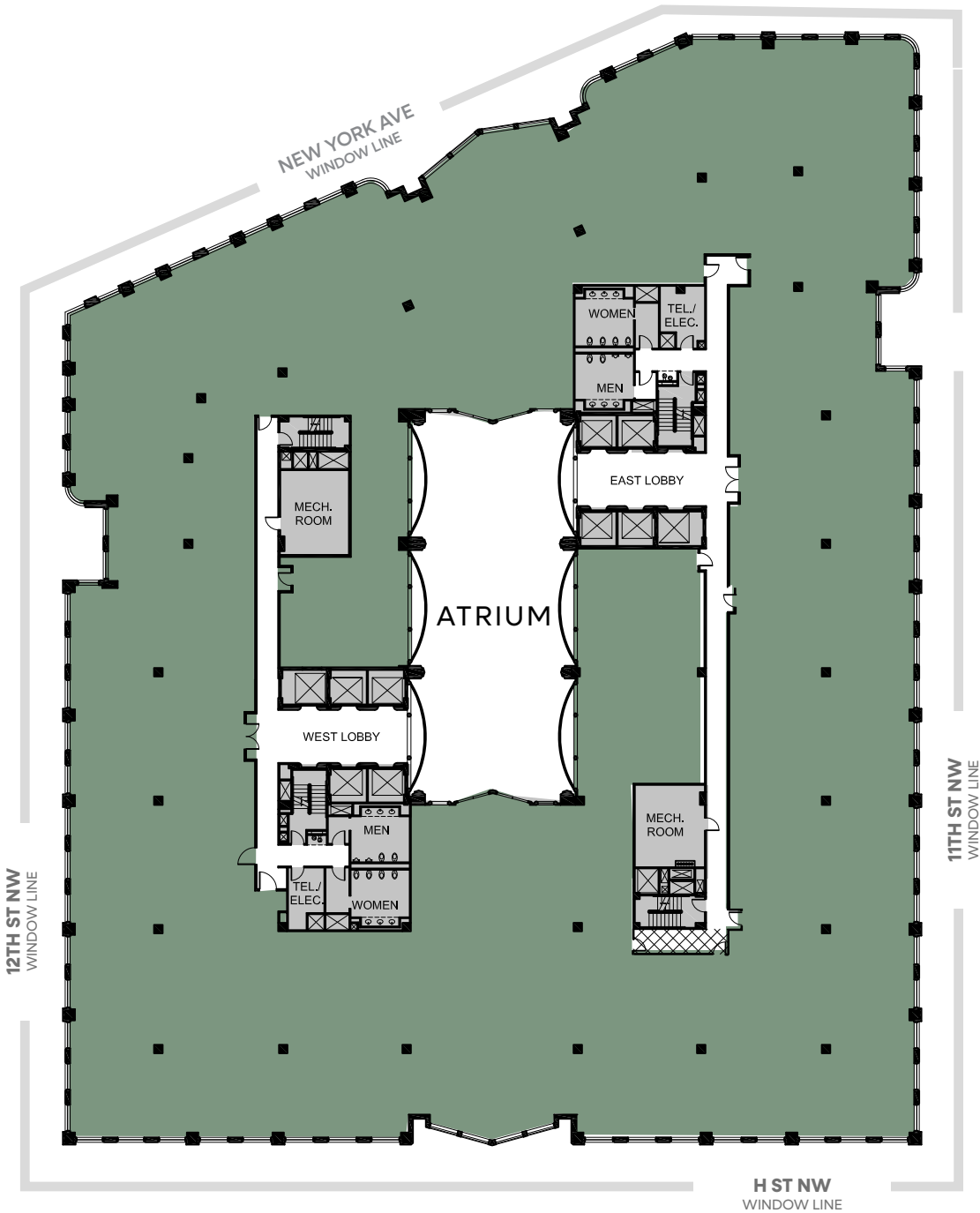
Fifth Floor Plan

SHELL
19,422 RSF



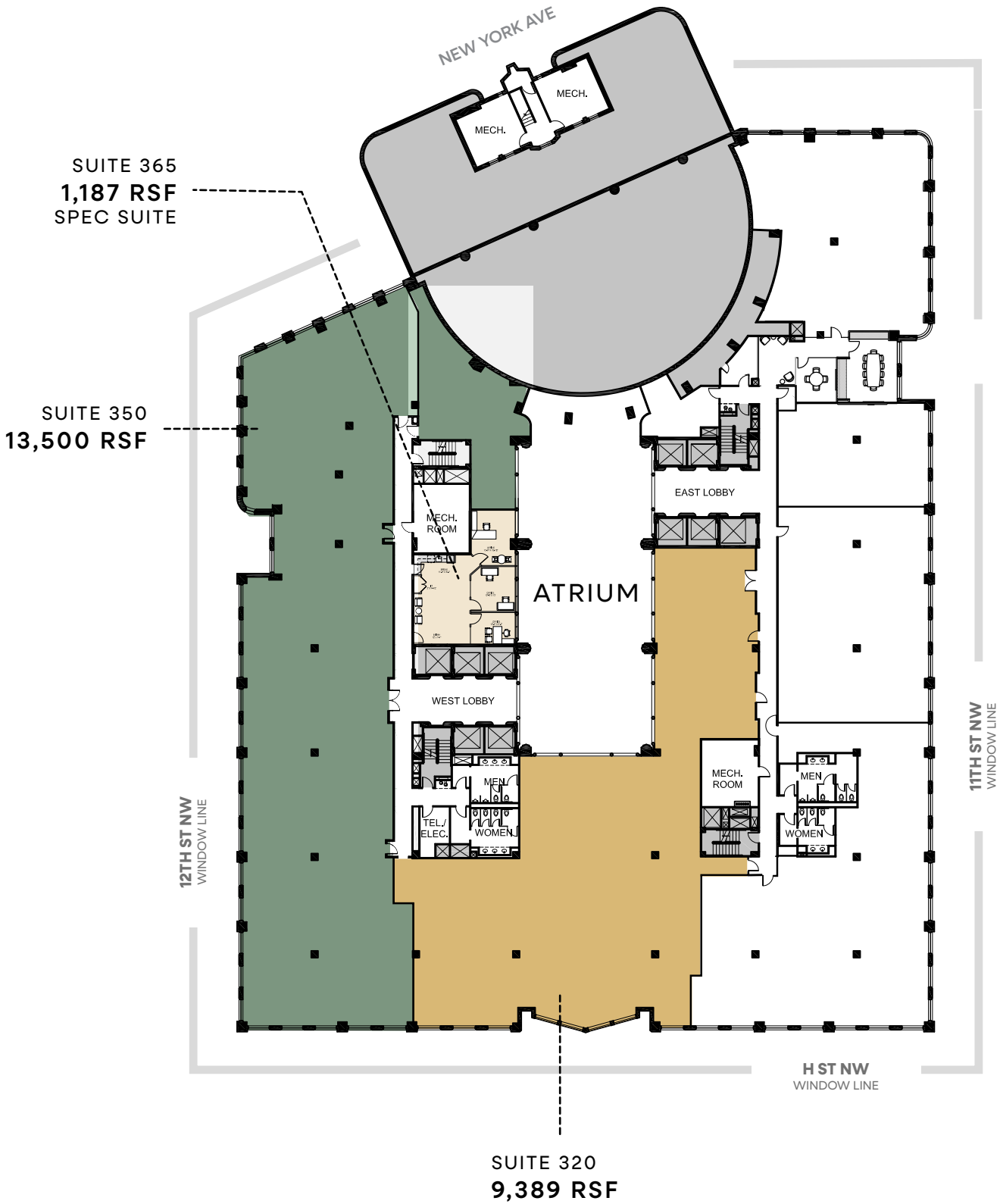
Fourth Floor Plan

46,733 RSF
AVAILABLE 7/1/26



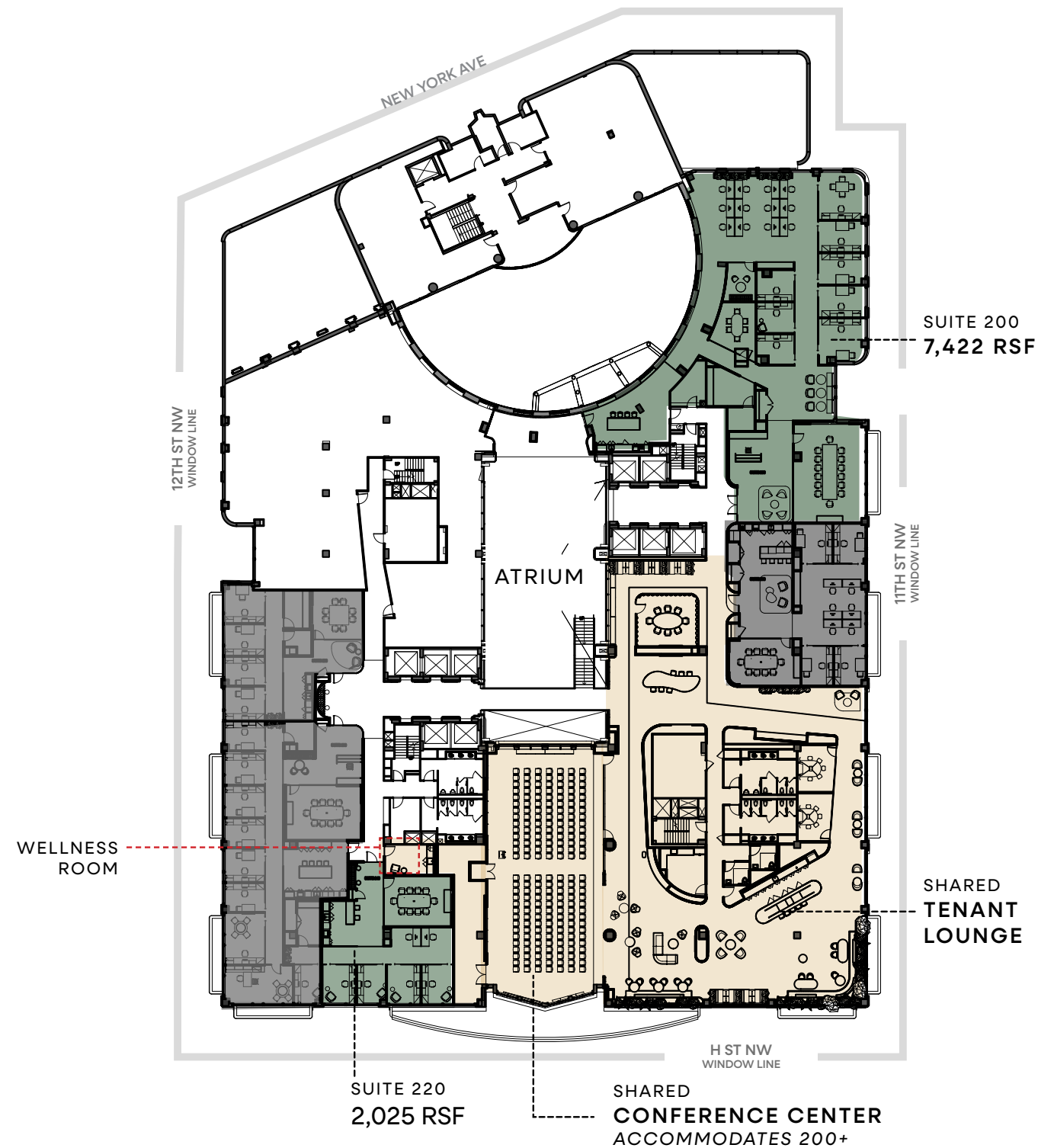
Third Floor Plan

13,500 RSF | 9,389 RSF | 1,187 RSF



Second Floor Plan

SUITES RANGE FROM 2,025 RSF - 7,422 RSF



AMENITY LOUNGE



CONFERENCE SPACE
ACCOMMODATES 200+

An Exceptional Location

1100 New York is situated between Penn Quarter and Chinatown, only a **2 minute** walk Metro Center for the orange, silver, blue, and red lines, and an **8 minute** walk to Gallery Place metro for the yellow and green lines.



To Get Your Shop On

Head to **CITY CENTER** to find the best luxury brands like Burberry, Arcteryx, and Louis Vuitton. Other Highlights: *Zara, Macy's*



Music Lovers

Grab tickets to your favorite concerts and events at **Capitol One Arena**. Other Highlights: *The Hamilton, Warner Theater*



An Ode to Pasta

Wine and dine at **Sfoglina** for a trip through Italy, featuring their own mozzarella bar. Other Highlights: *The Hamilton, MDMX Cocina*



For a Breath of Fresh Air

Visit the recently renovated **Franklin Park** for a lunch time stroll amongst historic statues and bright foliage. Other Highlights: *McPherson Square, Carnegie Library*



For the Artistically Inclined

Visit the **National Portrait Gallery** for the latest exhibitions or a coffee in their atrium.



Mezze Magic

Dive in to José Andrés' **Zaytinya** for unexpected dishes inspired by Turkish, Greek, and Lebanese cuisines. Other Highlights: *Tatte, Fig and Olive.*



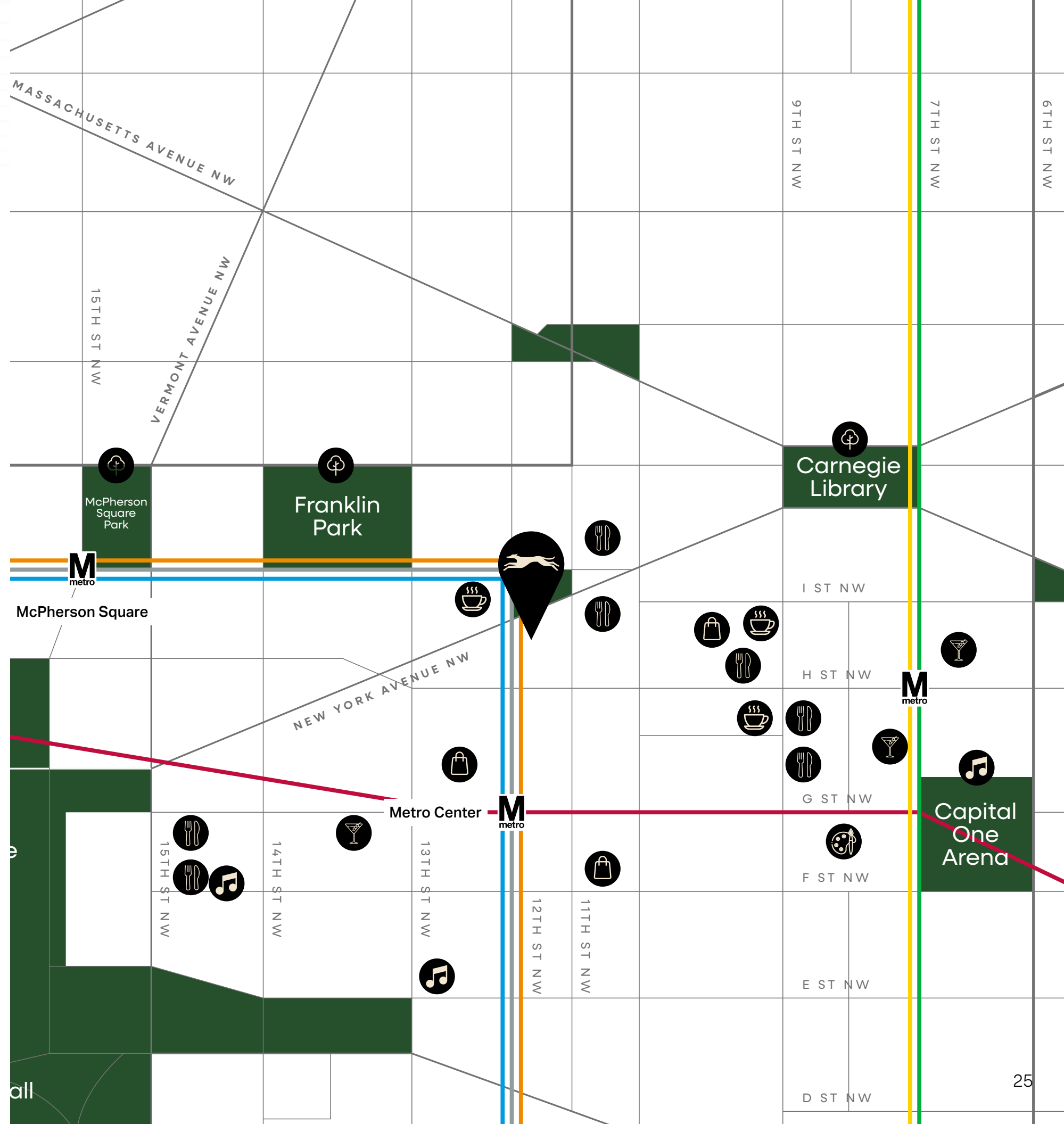
To Wind Down...or Up

Cheers cocktails at **Crimson DC** for a happy hour that will get your weekend started, Other Highlights: *Rocket Bar, Astro Beer Hall*



The Perfect Caffeine Fix

Stop by **Dolcezza** for your morning or midday coffee and espresso drinks, not to mention their wide variety of gelato flavors. Other Highlights: *Slipstream, Maman*





For more than 40 years, from **1940 to the early 1980s**, this Greyhound Bus Lines Super Terminal was an important transportation hub for the city. In the first few years, the station experienced heavy use with servicemen and civilians moving all over the country for the war effort in **World War II**. Sailors, soldiers and airmen were being moved all over the country. Greyhound Lines played an important role in the war effort due to rationing of gas and rubber and advertised it.

In 1961, it served as the departure point for **Freedom Ride 1961**, with interracial pairs sitting together in the bus seats and Black riders stationed at the front of the bus. The Freedom Ride became a **significant moment for the Civil Rights Movement**.

Threatened with demolition after its closure in the 1980s, the Greyhound Bus Terminal was saved by preservationists from the DC Preservation League, the Art Deco Society of Washington, and the Committee of 100 on the Federal City, who mobilized quickly and successfully to have the building added to the **DC Inventory of Historic Sites**.



81991-E



1100 New York



Contact Us

For Leasing Information

Evan Behr
202 258 3738
evan.behr@jll.com

Kristen Mathis
908 907 2094
kristen.mathis@jll.com

Mac Hall
443 845 3301
mac.hall@jll.com

