 **JLL** SEE A BRIGHTER WAY

For Lease

Medical Office / Surgery Center

Full floor -5,105 RSF

Located in the heart of Spokane's medical services district

842 S Cowley Street, Spokane, WA 99202

Jones Lang LaSalle Brokerage, Inc.
Real Estate License #: 01856260

E 8th Ave

4,925 ADT

S Cowley St

16 surface stalls

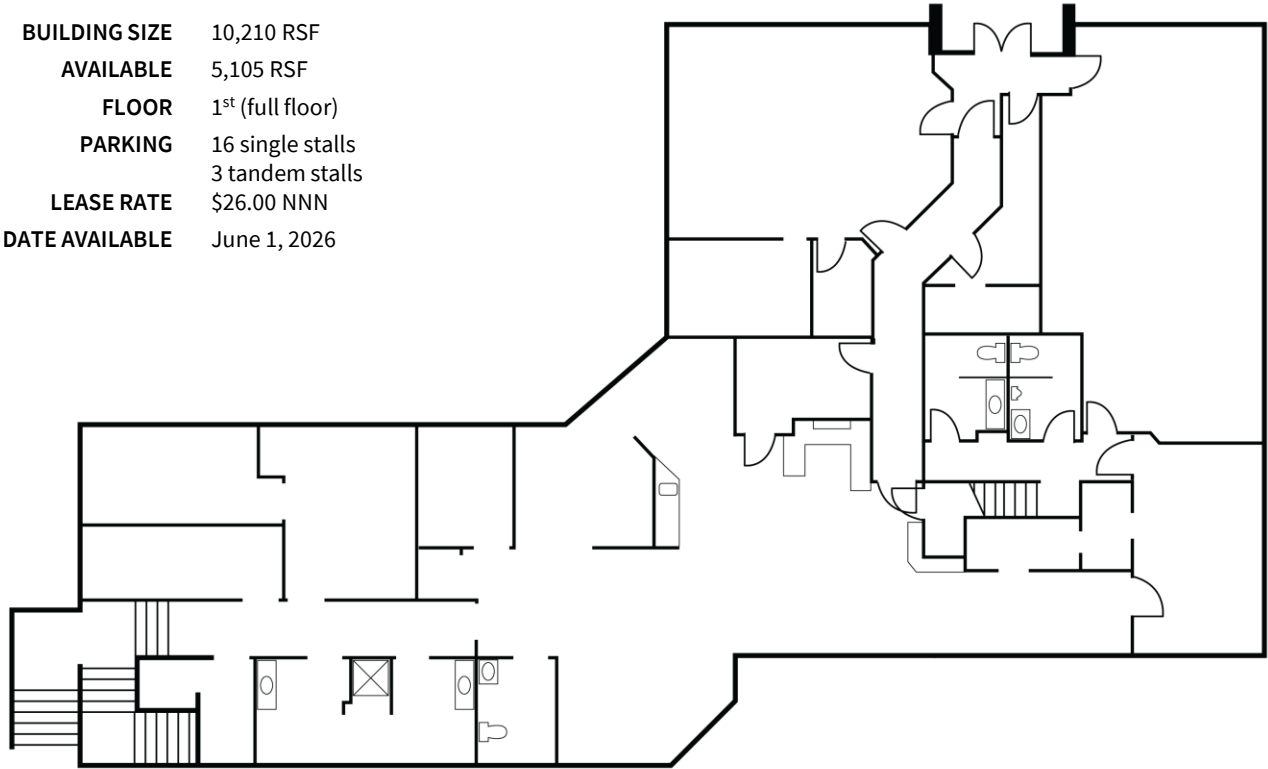
3 tandem stalls

S South Pine Ct

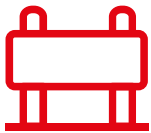


Overview

| | |
|-----------------------|-------------------------------------|
| BUILDING SIZE | 10,210 RSF |
| AVAILABLE | 5,105 RSF |
| FLOOR | 1 st (full floor) |
| PARKING | 16 single stalls 3 tandem stalls |
| LEASE RATE | \$26.00 NNN |
| DATE AVAILABLE | June 1, 2026 |



Amenities



Prominent
monument sign



Full floor on
ground level



Onsite
parking



Excellent freeway
access



Amenities map



842 S Cowley Street is strategically located in the heart of Spokane's medical services district with excellent access to Interstate 90 and convenient access to Providence Hospital and Sacred Heart Medical Center.

Traffic scores



Michael Sharapata

Senior Managing Director
michael.sharapata@jll.com
 +1 509 822 0088

Jared Smith

Vice President
j.smith@jll.com
 +1 509 505 7459



Although information has been obtained from sources deemed reliable, neither Owner nor JLL makes any guarantees, warranties or representations, express or implied, as to the completeness or accuracy as to the information contained herein. Any projections, opinions, assumptions or estimates used are for example only. There may be differences between projected and actual results, and those differences may be material. The Property may be withdrawn without notice. Neither Owner nor JLL accepts any liability for any loss or damage suffered by any party resulting from reliance on this information. If the recipient of this information has signed a confidentiality agreement regarding this matter, this information is subject to the terms of that agreement. ©2025 Jones Lang LaSalle IP, Inc. All rights reserved.