



4PIKE

1424 4TH AVE

A historical gem in the heart of Seattle

4Pike is a historical gem in the heart of Seattle's CBD. With a walking score of 100 and located on major transit routes, your new office is surrounded by restaurants, shopping and is an 8-minute walk to Pike Place Market and the newly enhanced Waterfront Park.

A newly renovated lobby, highlighting historical architectural details and 5 newly renovated suites ready for occupancy, featuring abundant natural light and flexible floorplans.



Updated lobby finishes
with historic character



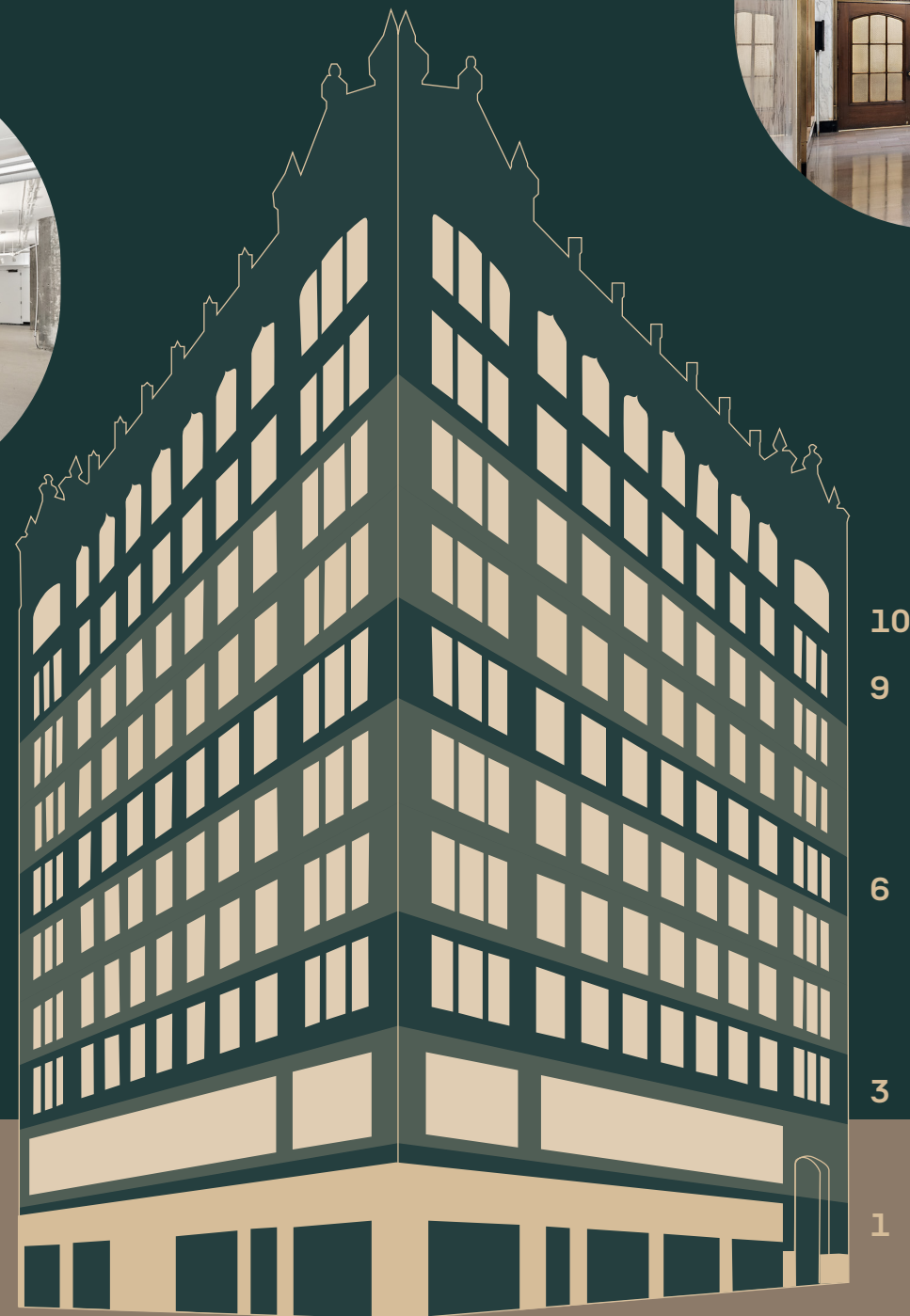
Exterior street-level upgrades to
the lower facade and overhangs



Fifth floor conferencing facility

Availability

● Available Suites



Click on floor numbers to view availability



Ready-to-occupy
renovated suites



Accessible and
connected

100

Perfect walk score

100

Perfect transit score

Walking distance to numerous bus stops, light rail station, and the Seattle Monorail, the commute to and from the workplace couldn't be more convenient. Nearby attractions include Pike Place Market, the redeveloping waterfront, and Colman Ferry Terminal.



4P

4PIKE

1424 4TH AVE



TIM JONES
+1 206 971 7011
tim.jones@jll.com

JAKE BOS
+1 425 974 4086
jake.bos@jll.com

BAILEY HALLIS
+1 206 777 5203
bailey.hicks@jll.com