


**Reduced
Asking Rate**

Motivated
Sublandlord



 **JLL** SEE A BRIGHTER WAY

For Sublease

Stunning Turnkey Concrete Loft located right at
Yonge & Dundas

20 Dundas Street West | 9,302 SF

Space **Highlights**

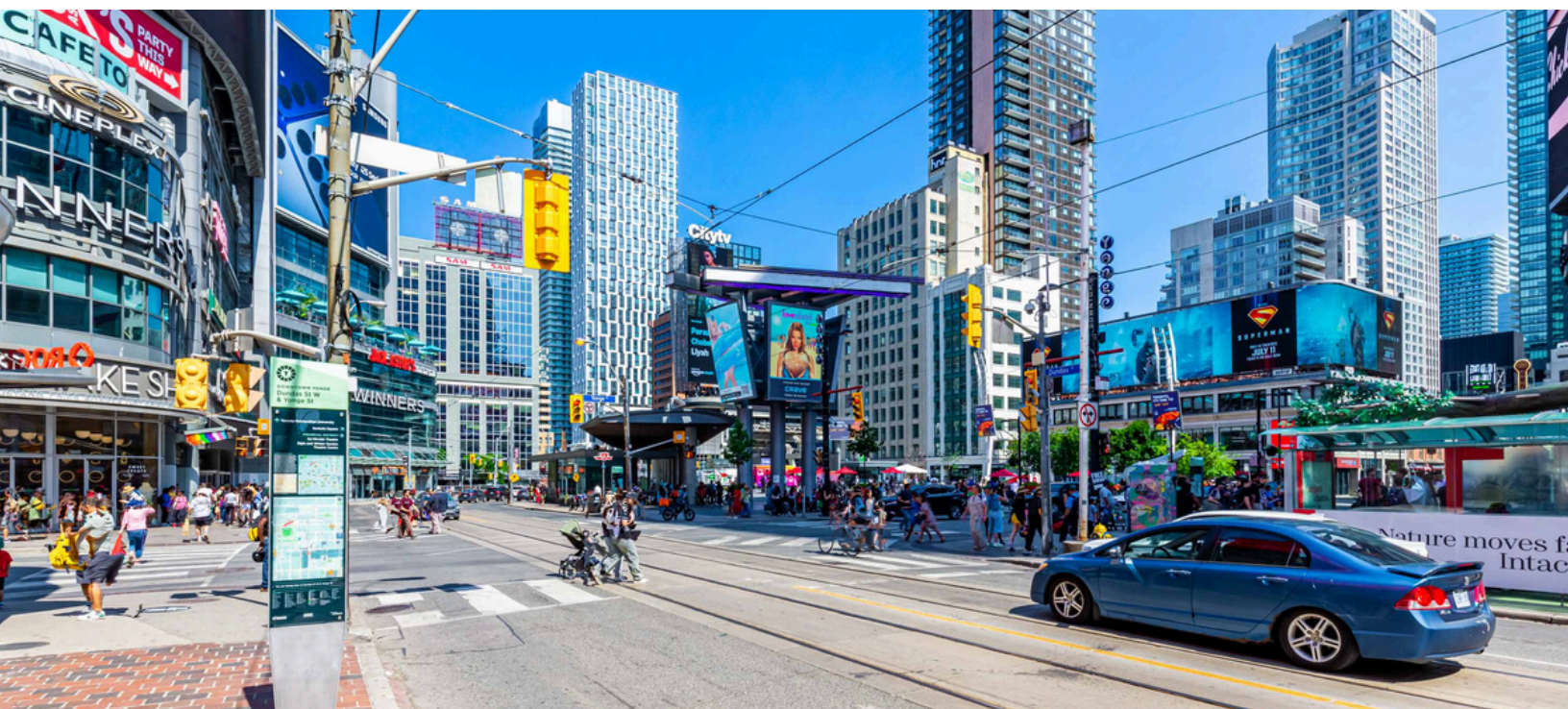
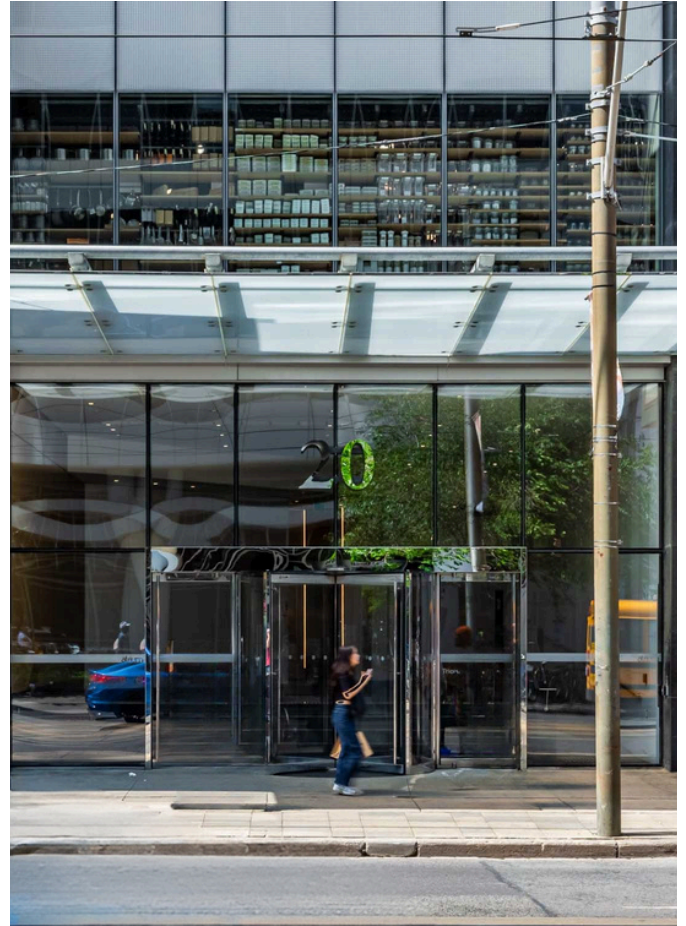
- Brand new turnkey model suite featuring modern finishes, polished concrete floors, and high exposed ceilings
- Versatile layout with reception, 2 private offices, 2 phone booths, 2 boardrooms, games room, and large open area with approximately 70 sit-stand workstations
- Various soft-seating including spacious café-style cafeteria & collaborative areas
- Direct double door glass elevator exposure
- Abundant natural light with panoramic views
- PATH connected & steps from Union Station

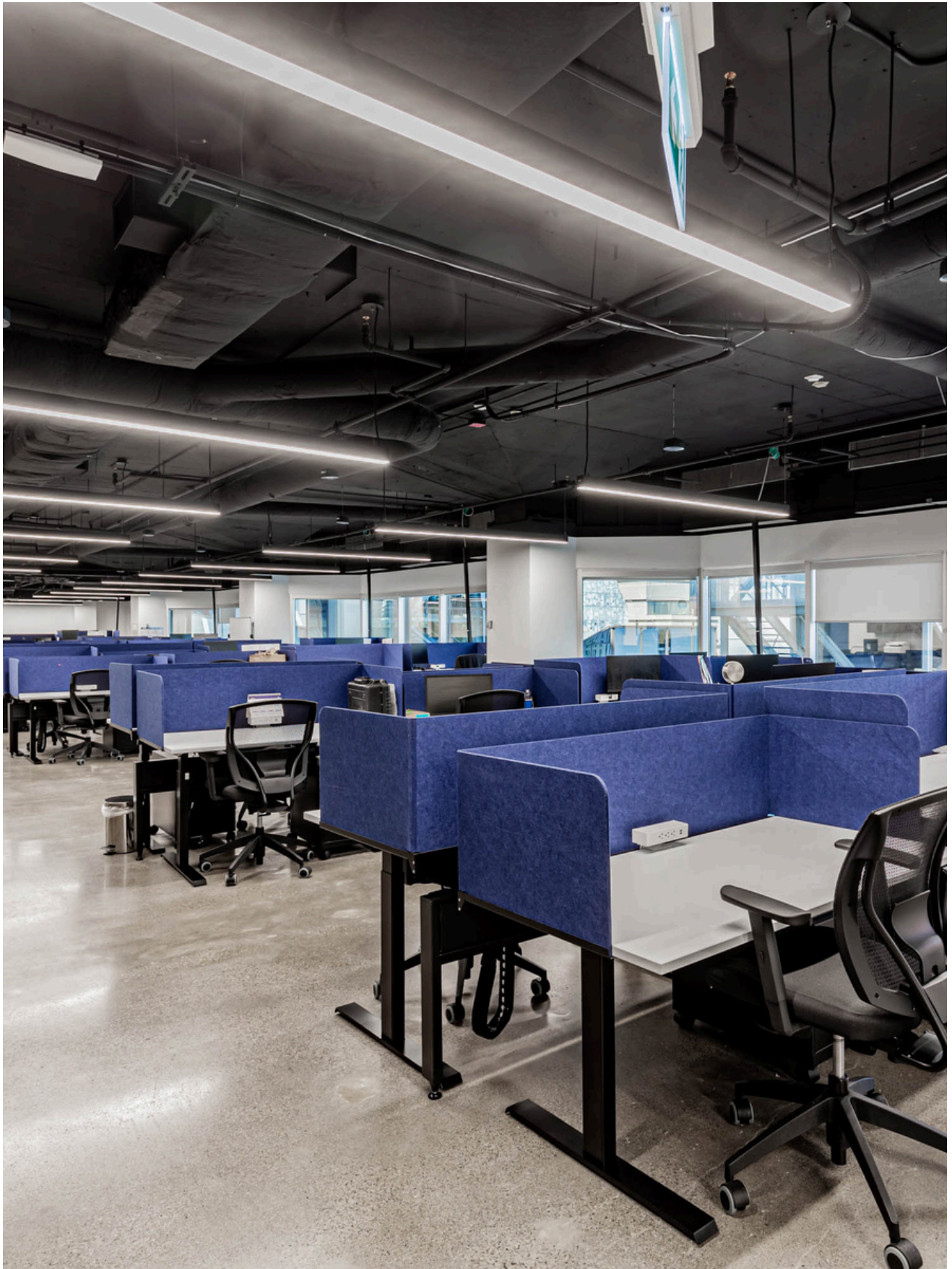
Suite	803
Size	9,302 SF
Availability	Immediate
Term	August 30, 2028
Net Rent	Contact Sublisting Agents*
Additional Rent	\$27.99 (est. 2025)
Furniture	Included

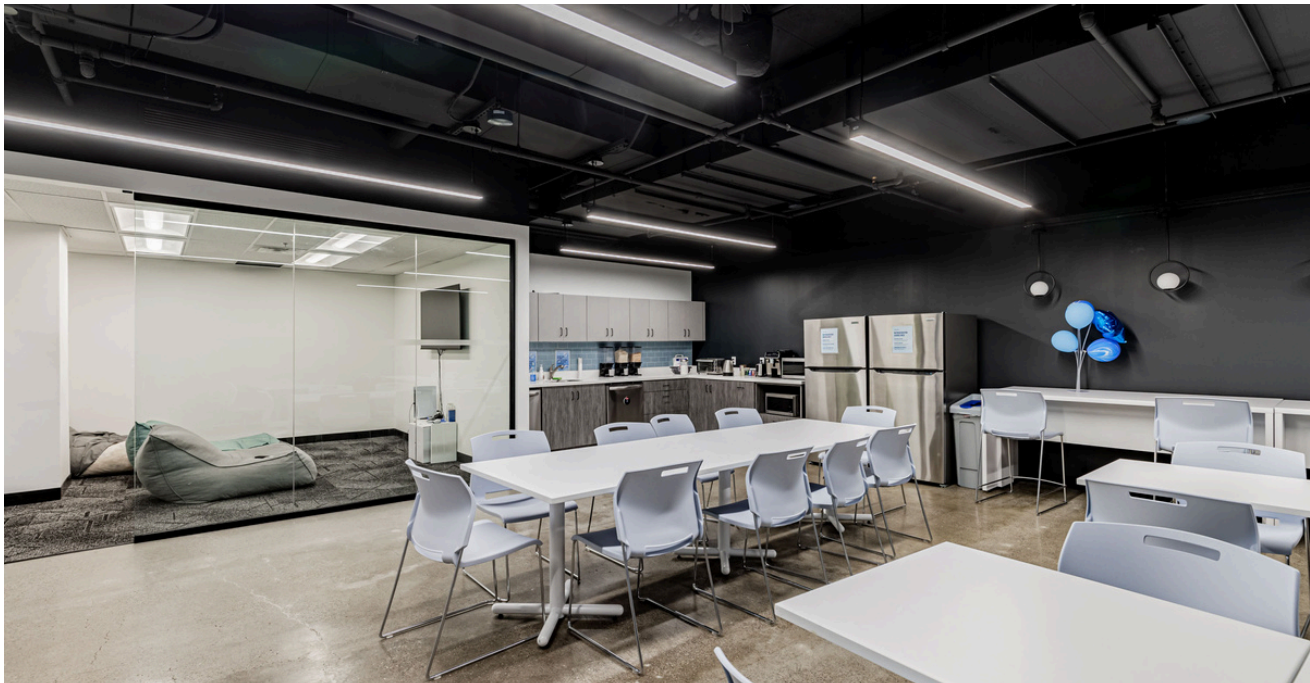
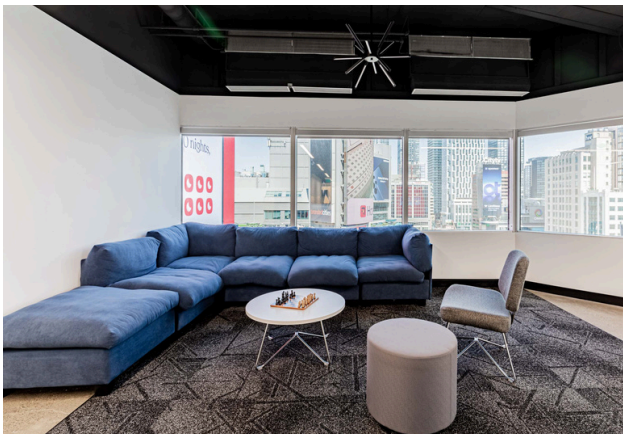


Building **Highlights**

- Atrium is steps from Yonge-Dundas Square and has direct access to TTC's Dundas Station on the Yonge-University Line. At street level, Atrium has access to TTC route 6 (Bay), and route 505 (Dundas). Both the Yonge-University Line subway service and bus route 6 (Bay) connect to Union Station providing connectivity to Go Transit, UP Express, and Via Rail.
- Onsite amenities include sit down food court, restaurants (Red Lobster, Moon Palace, etc.), coffee shops (Tim Hortons), Marche Leo's Marketplace, CIBC, LCBO, dry cleaning, dental and medical clinics, and fashion retailers (Foot Locker, West 49, Muji, etc.).

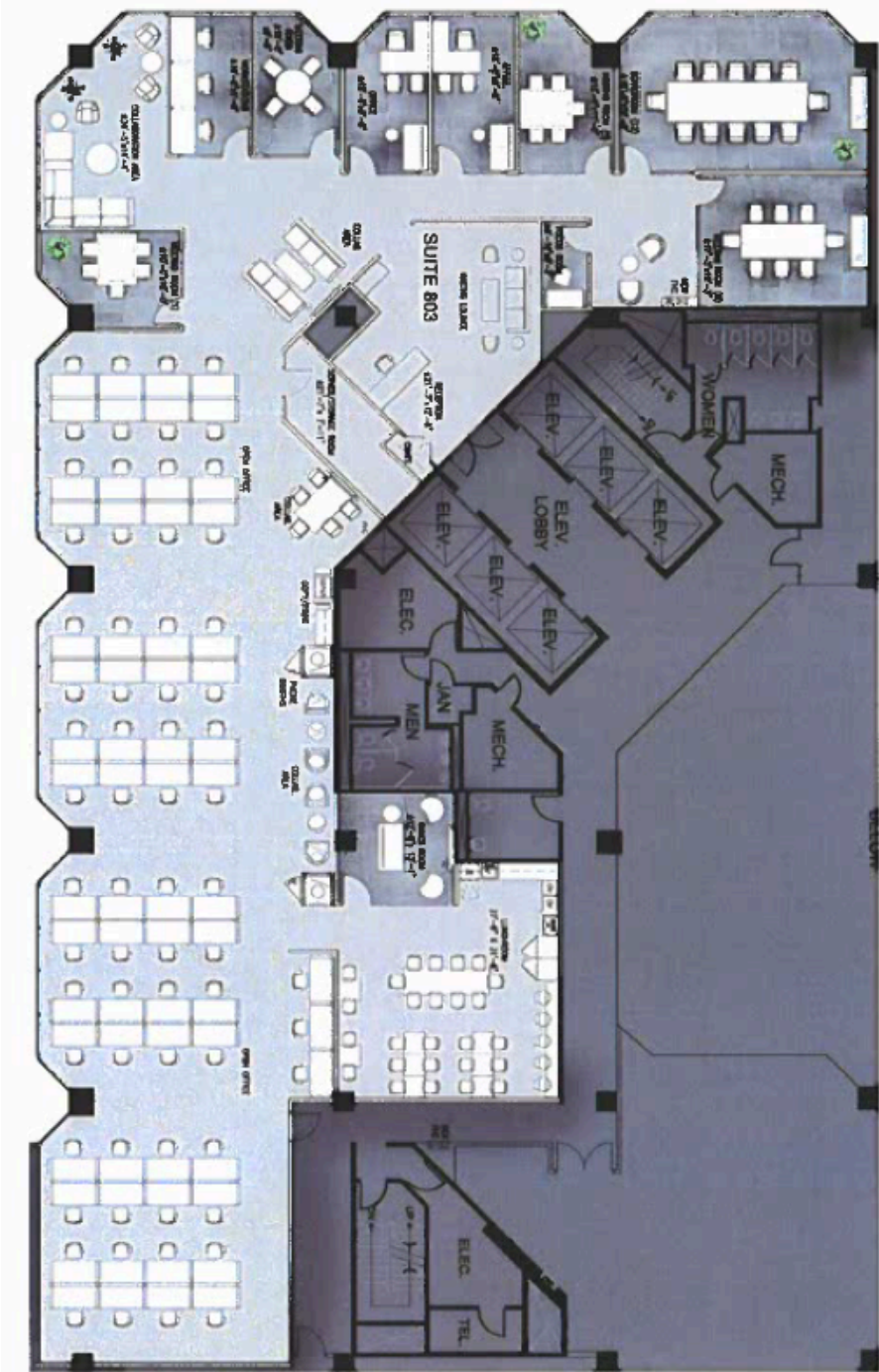




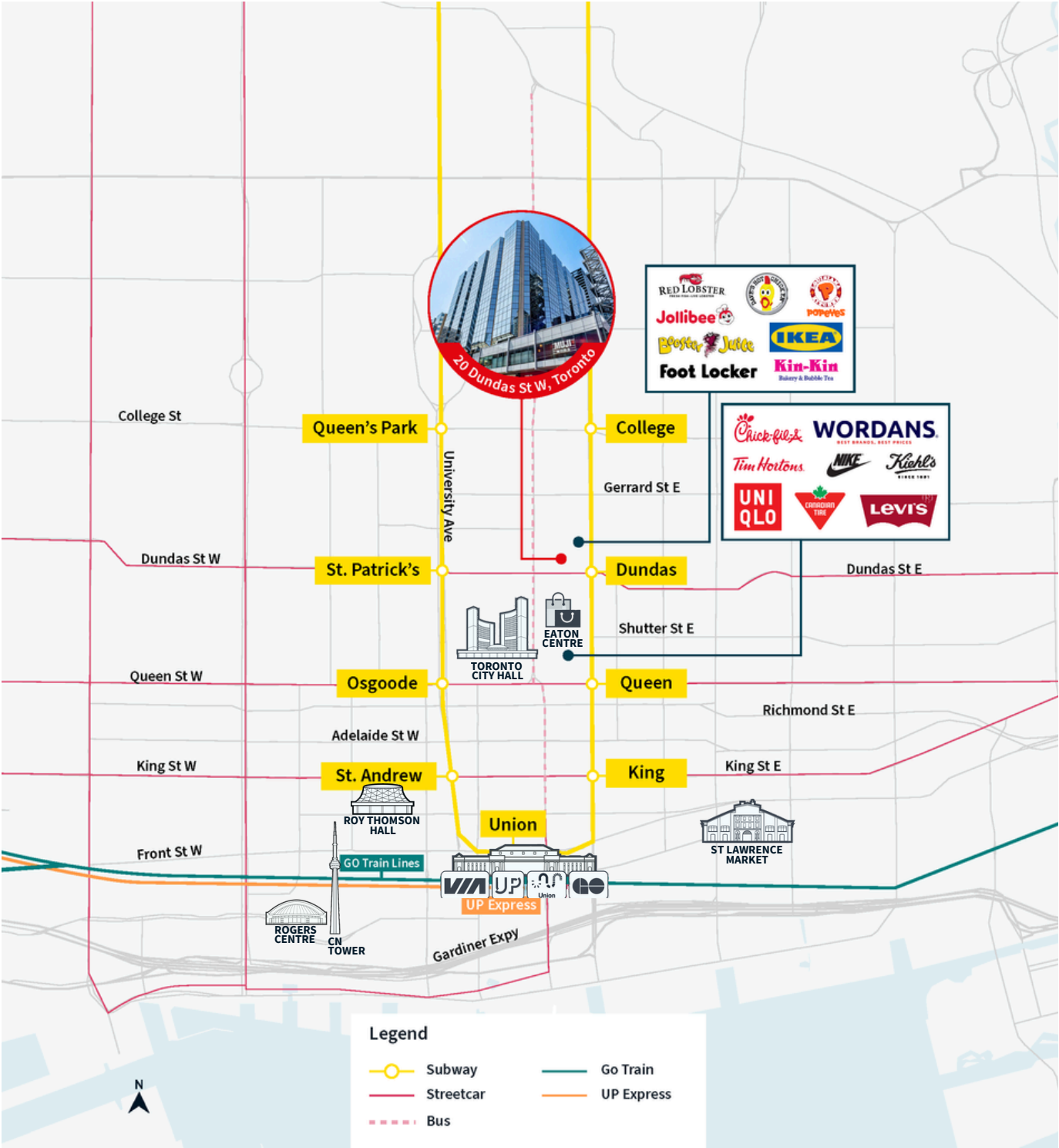


Floor Plan

Suite 803 - 9,302 SF



Amenities Map



JLL

Jon Pezim*

Executive Vice President

+1 (416) 304-6032

jon.pezim@jll.com

Adam Harun*

Sr. Transaction Manager

+1 (416) 238-4806

adam.harun@jll.com

Cali Hopkins*

Associate

+1 (647) 505-6502

cali.hopkins@jll.com