



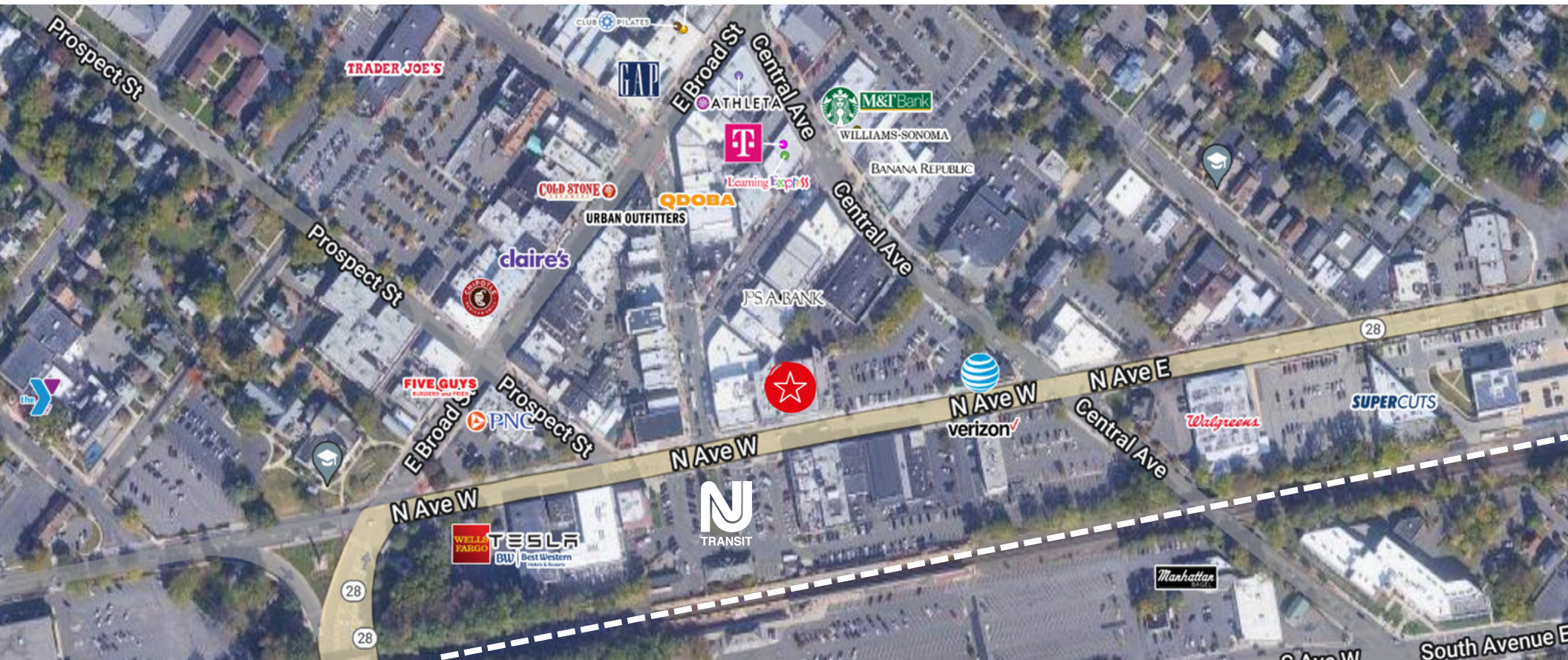
For lease

226 North Ave, Westfield NJ 07090

2,047 SF Available

 **JLL** SEE A BRIGHTER WAY

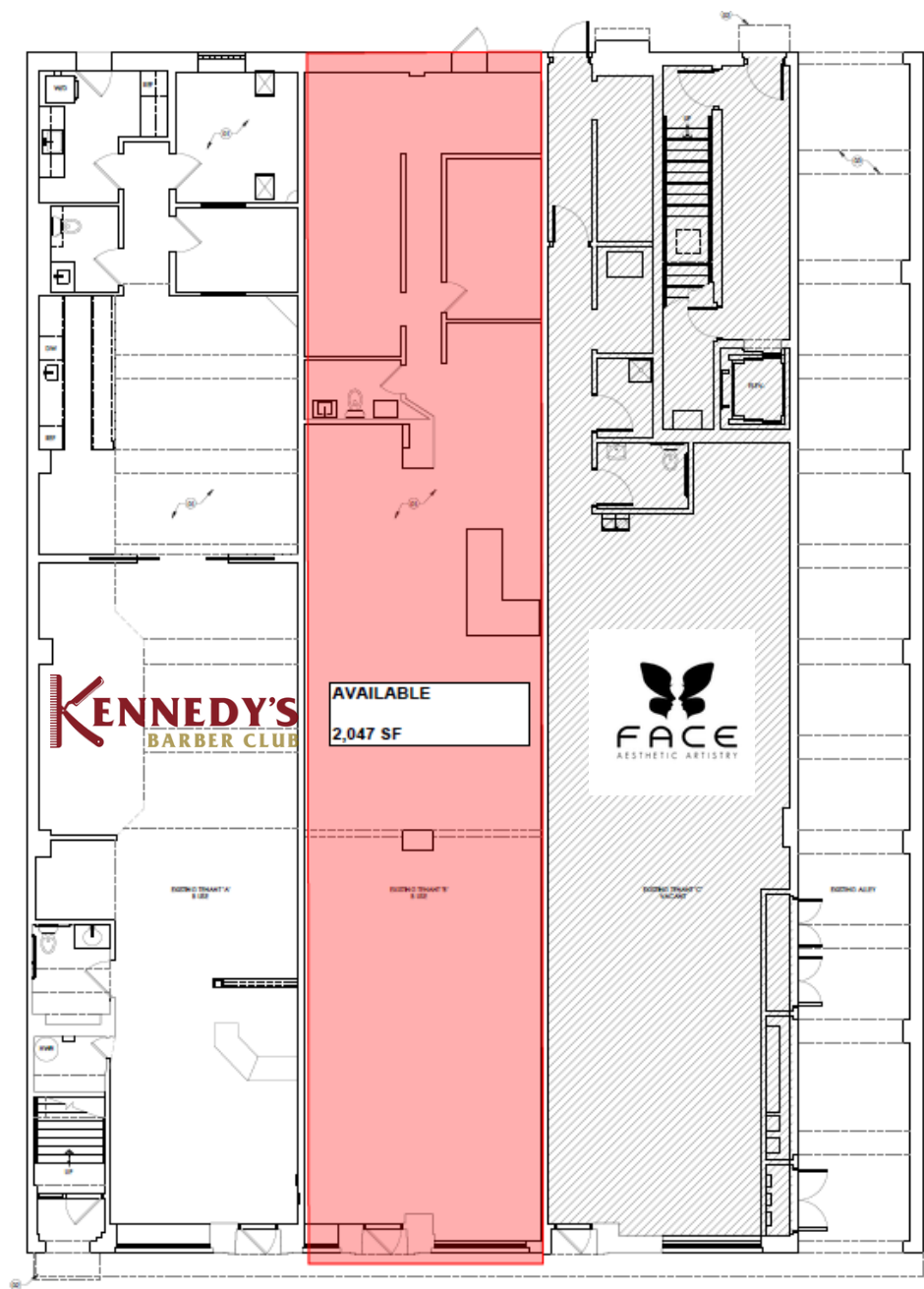
Property Highlights



- **Downtown Westfield location directly across from the train station**
- Co-tenants include Kennedy's Barbershop and FACE Aesthetic Artistry
- One block from new residential development
- Zoned for professional use
- Municipal parking lots and on street parking available
- 21' Frontage

	1 mile	3 miles	5 miles
Estimated population	17,808	115,025	364,429
Estimated households	6,265	41,386	128,821
Est. Average HH income	\$193,338	\$174,643	\$143,675
Estimated employees	55,089	93,492	200,149

Floorplan



Thank you

About JLL

For over 200 years, JLL (NYSE: JLL), a leading global commercial real estate and investment management company, has helped clients buy, build, occupy, manage and invest in a variety of commercial, industrial, hotel, residential and retail properties. A Fortune 500® company with annual revenue of \$20.9 billion and operations in over 80 countries around the world, our more than 103,000 employees bring the power of a global platform combined with local expertise. Driven by our purpose to shape the future of real estate for a better world, we help our clients, people and communities SEE A BRIGHTER WAYSM. JLL is the brand name, and a registered trademark, of Jones Lang LaSalle Incorporated. For further information, visit [jll.com](https://www.jll.com).

Craig Parcels

Senior Vice President
craig.parcels@jll.com
+1 201 618 7223