

Arch Road Business Park

3663

ARCH ROAD

Stockton • California

**±10,654 SF
FOR LEASE**



EQUITIES



Jones Lang LaSalle Brokerage, Inc., CA Real Estate License #01856260

PROPERTY FEATURES



Available **Suite 150:** $\pm 3,158$ SF
Unit is in shell condition and can be built out to meet tenant's space requirements;
Can be combined with Suite 200

Suite 200: $\pm 4,096$ SF
 ± 226 SF office and one (1) grade-level door
Combine with Suite 150 for $\pm 7,254$ SF warehouse with ± 226 SF office

Suite 600: $\pm 3,400$ SF
 ± 400 SF private office, small lobby, and $\pm 10,400$ SF of fenced yard/parking.
One (1) grade level door.

Combined Total: $\pm 10,654$ SF

Total Building Size $\pm 32,640$ SF

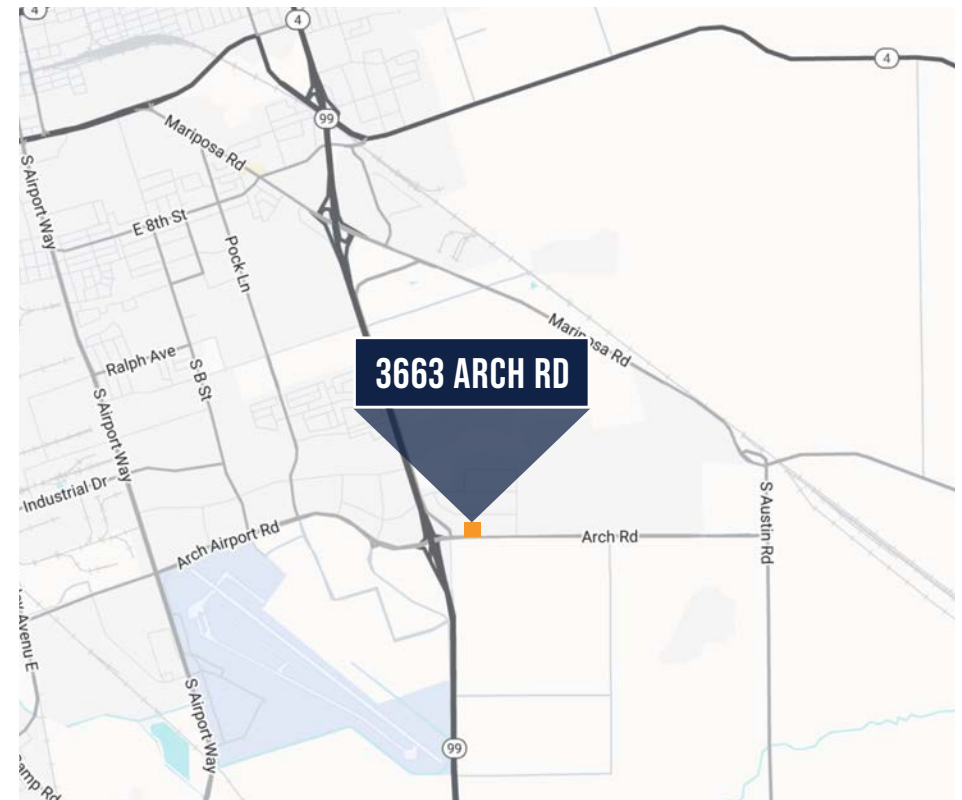
Parcel Size ± 2.5 AC

Clear Height 16'

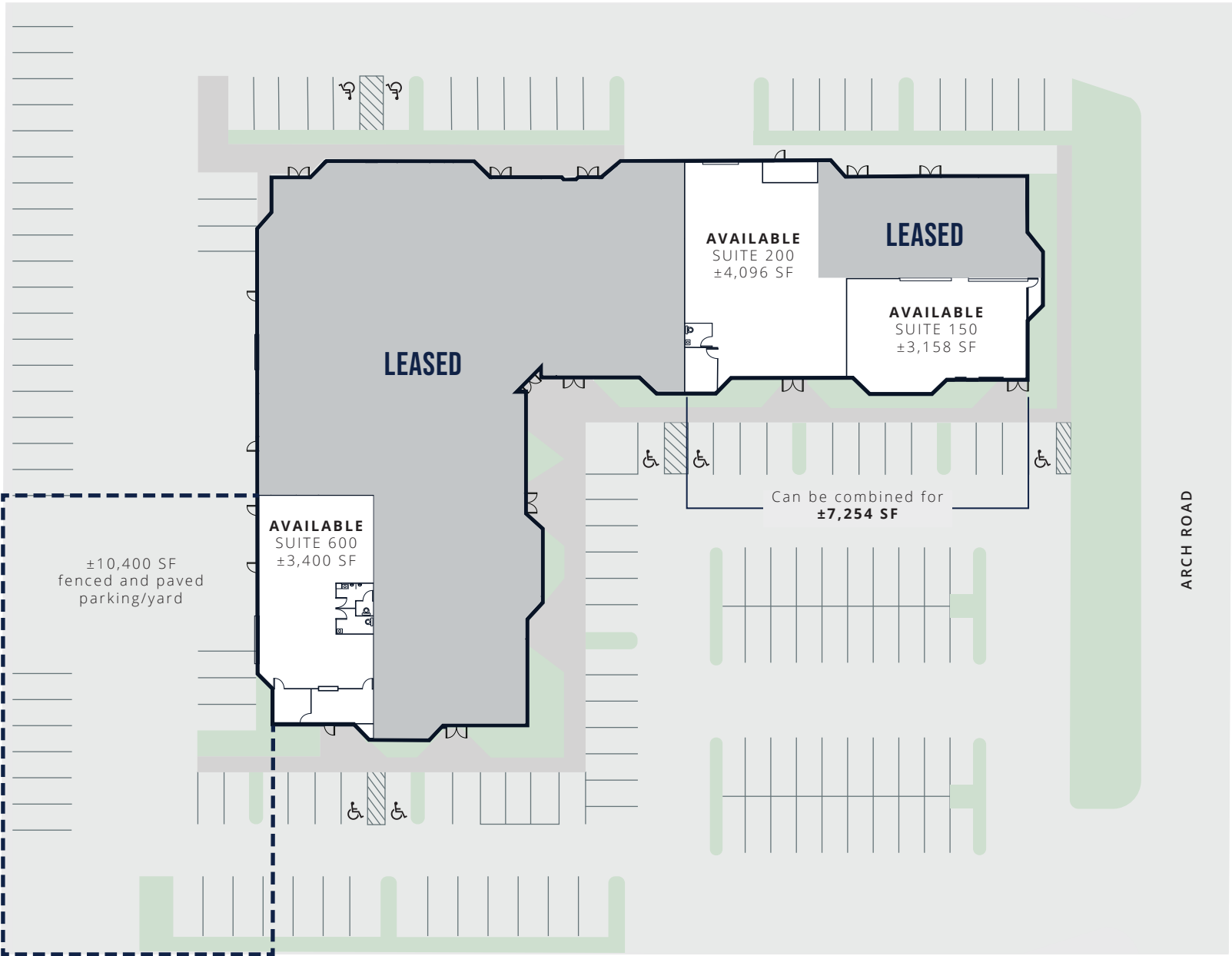
Frontage Arch Road

Access Immediate access to Hwy 99

Lease Rate Contact Broker



FLOOR PLAN



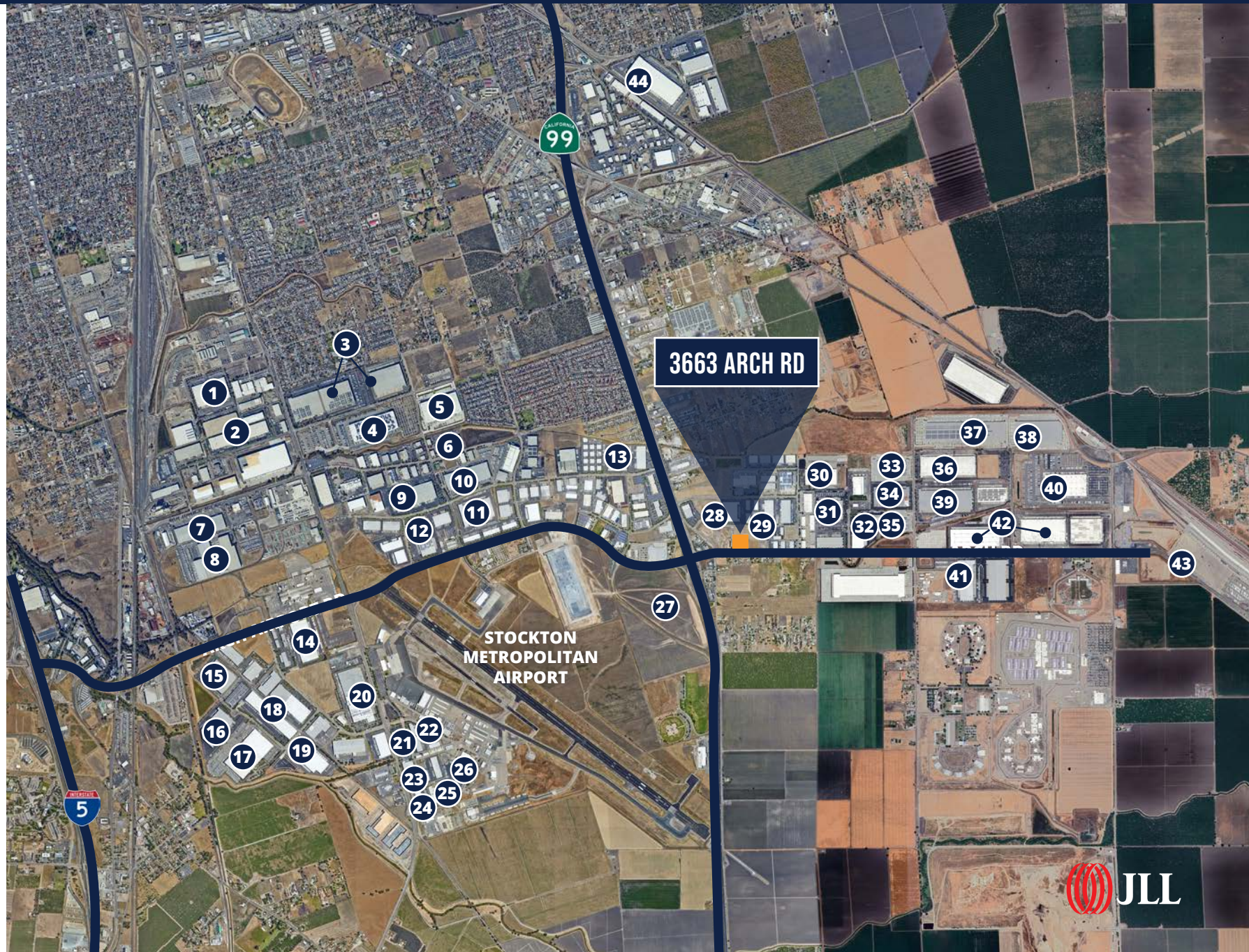
*FLOOR PLANS NOT
DRAWN TO SCALE



CORPORATE NEIGHBORS



- 1 O'Reilly
- 2 Niagara
- 3 Cost Plus World Market
- 4 Amazon
- 5 Pratt Industries
- 6 Home Depot
- 7 Allen Distribution
- 8 C&S Wholesale Grocers
- 9 Raley's
- 10 Trader Joe's
- 11 Whirlpool
- 12 Staples
- 13 Lifestyle
- 14 CPFD (Costal Pacific)
- 15 BMW
- 16 Prism Logistics
- 17 Dollar Tree
- 18 Pactiv
- 19 Costco Wholesale
- 20 Simpson StrongTie
- 21 Vander-Bend
- 22 Aero Turbine
- 23 Aramark
- 24 Premier Finishing
- 25 Keurig Dr Pepper
- 26 Stericycle
- 27 Target
- 28 Weber
- 29 International Paper
- 30 DHL
- 31 Pace Supply
- 32 Allen Distribution
- 33 Amazon
- 34 Fox
- 35 Pitney Bowes
- 36 KeHe
- 37 Amazon
- 38 Allen Distribution
- 39 General Mills
- 40 Amazon
- 41 FedEx
- 42 Niagara
- 43 BNSF
- 44 Costco





3663
ARCH ROAD

EXCLUSIVE BROKERS

TIM MUSTIN

JLL | Managing Director
tim.mustin@jll.com
+1 209 390 1687
RE License #01857876

JOHN FONDALE, SIOR

JLL | Managing Director
john.fondale@jll.com
+1 209 390 1694
RE License #01017415

MICHAEL MATTER

JLL | Vice President
michael.matter@jll.com
+1 209 390 1702
RE License #01435801

MICHAEL REED

Buzz Oates | Asset Manager
michaelreed@buzzoates.com
+1 916 379 3859
RE License #01477117

Although information has been obtained from sources deemed reliable, neither Owner nor JLL makes any guarantees, warranties or representations, express or implied, as to the completeness or accuracy as to the information contained herein. Any projections, opinions, assumptions or estimates used are for example only. There may be differences between projected and actual results, and those differences may be material. The Property may be withdrawn without notice. Neither Owner nor JLL accepts any liability for any loss or damage suffered by any party resulting from reliance on this information. If the recipient of this information has signed a confidentiality agreement regarding this matter, this information is subject to the terms of that agreement. ©2025. Jones Lang LaSalle IP, Inc. All rights reserved.

