

For lease

Rare Upscale Med Spa Space Available



Property specifications

Available size	Part 1st Floor: 1,800 SF
Possession	Immediate
Utilities	Separately metered
Rental rate	Upon request
Parking	5.52/1,000 SF
Space features	<ul style="list-style-type: none">• Former Med-Spa• Four (4) exam rooms with plumbing• Dedicated reception and waiting area• Shared outdoor garden area• Private restroom in suite
Location	<ul style="list-style-type: none">• Located in prestigious Stony Brook Technology Center• Close proximity to St. Charles Hospital, Northwell (John T Mather Hospital) and Stony Brook University Medical Center• Easy accessibility from Nesconset Hwy (Rte 347)

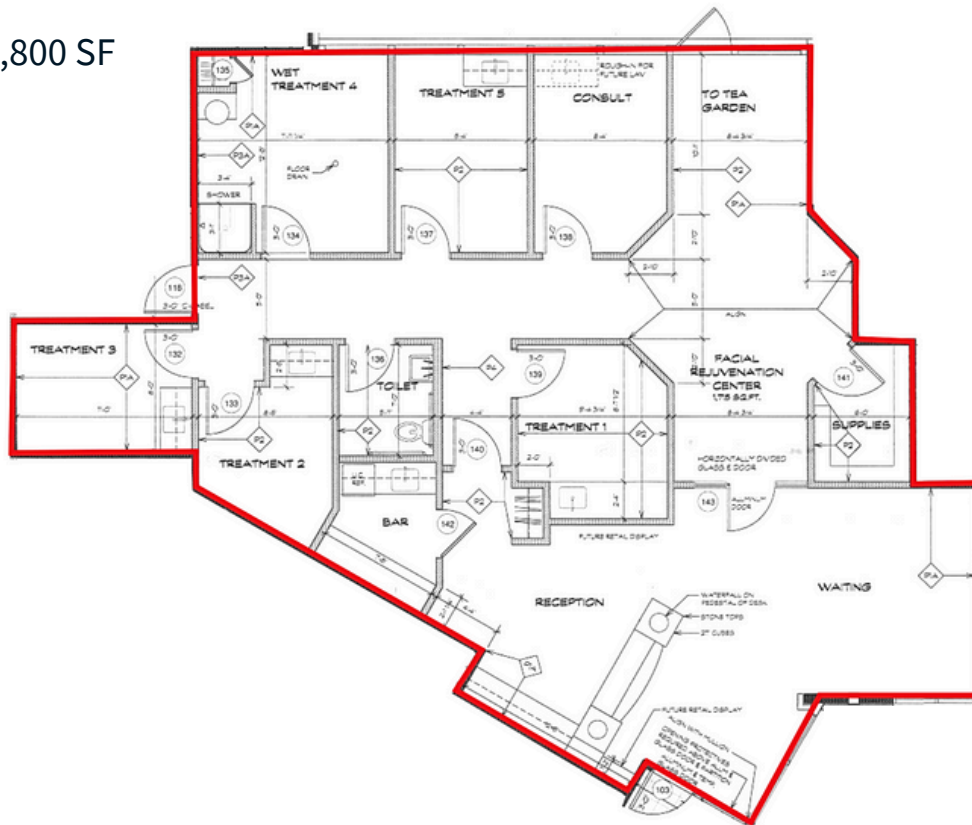
**179 N Belle Mead Road
East Setauket, NY**

Ray Ruiz
Managing Director
+1 631 962 2890
ray.ruiz@jll.com

John A. Nielsen
Vice President
+1 631 962 7382
johna.nielsen@jll.com

179 N Belle Mead Road / East Setauket, NY

Part 1st Floor: 1,800 SF



Although information has been obtained from sources deemed reliable, neither Owner nor JLL makes any guarantees, warranties or representations, express or implied, as to the completeness or accuracy as to the information contained herein. Any projections, opinions, assumptions or estimates used are for example only. There may be differences between projected and actual results, and those differences may be material. The Property may be withdrawn without notice. Neither Owner nor JLL accepts any liability for any loss or damage suffered by any party resulting from reliance on this information, if the recipient of this information has signed a confidentiality agreement regarding this matter, this information is subject to the terms of that agreement. ©2024 Jones Lang LaSalle IP, Inc. All rights reserved.