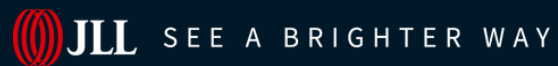




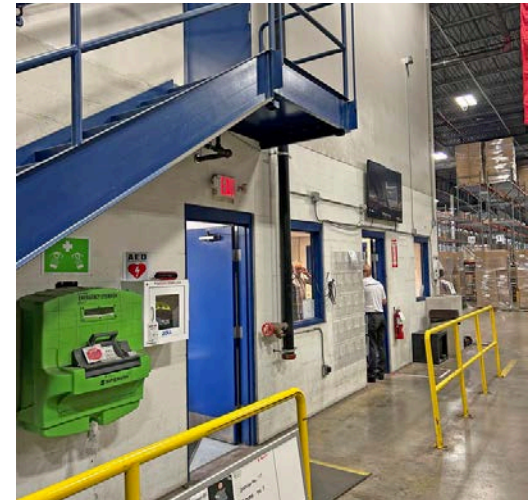
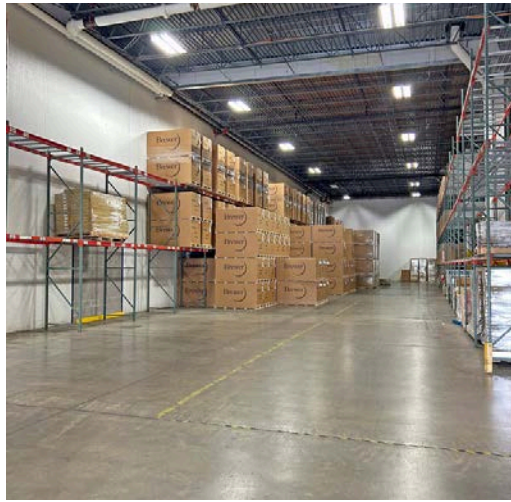
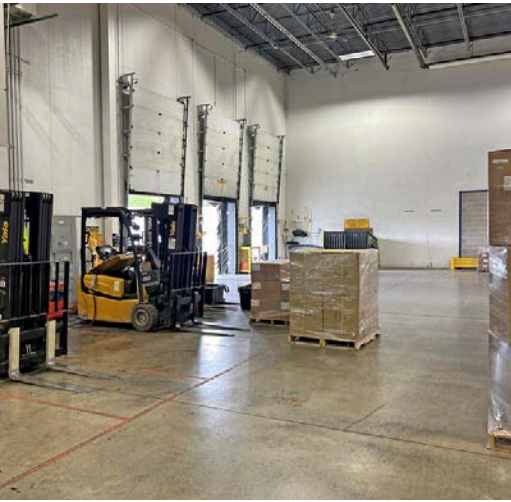
For Sublease

40,050 SF in Menomonee Falls, WI



Jones Lang LaSalle Brokerage, Inc. a licensed real estate broker.

N92 W14401 Anthony Ave., Menomonee Falls, WI 53051



40,050 SF

Total sublease availability

\$6.50 NNN

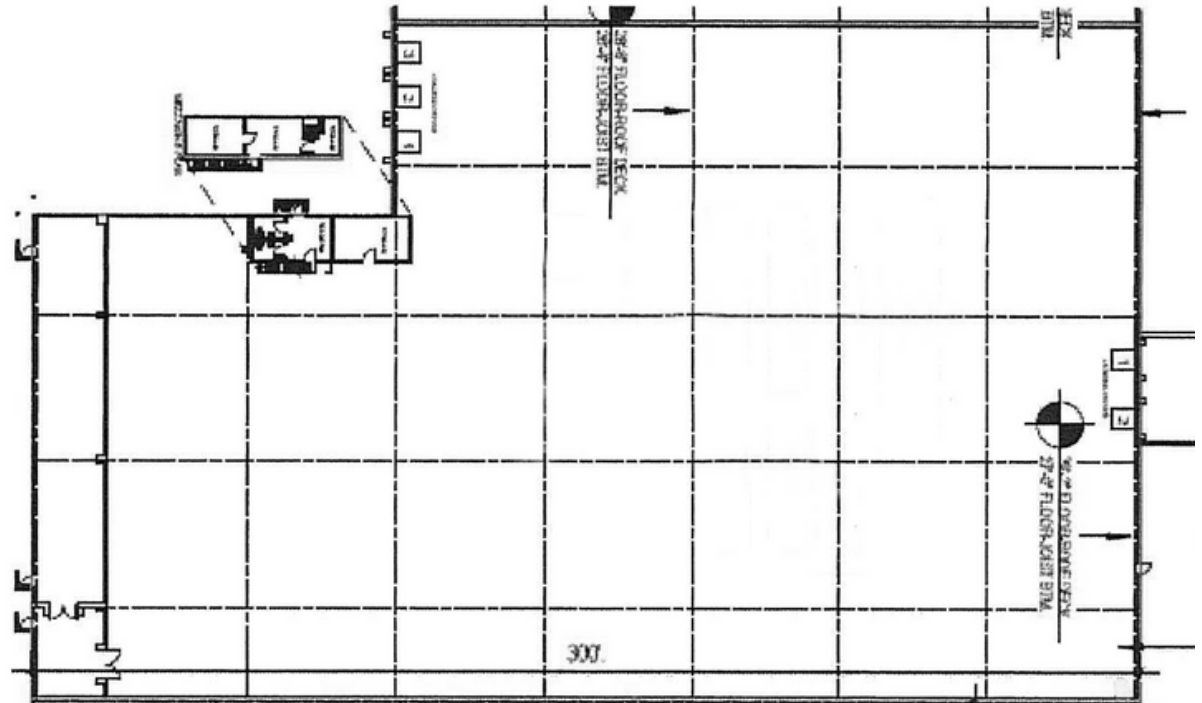
Sublease rate PSF

March 31, 2027

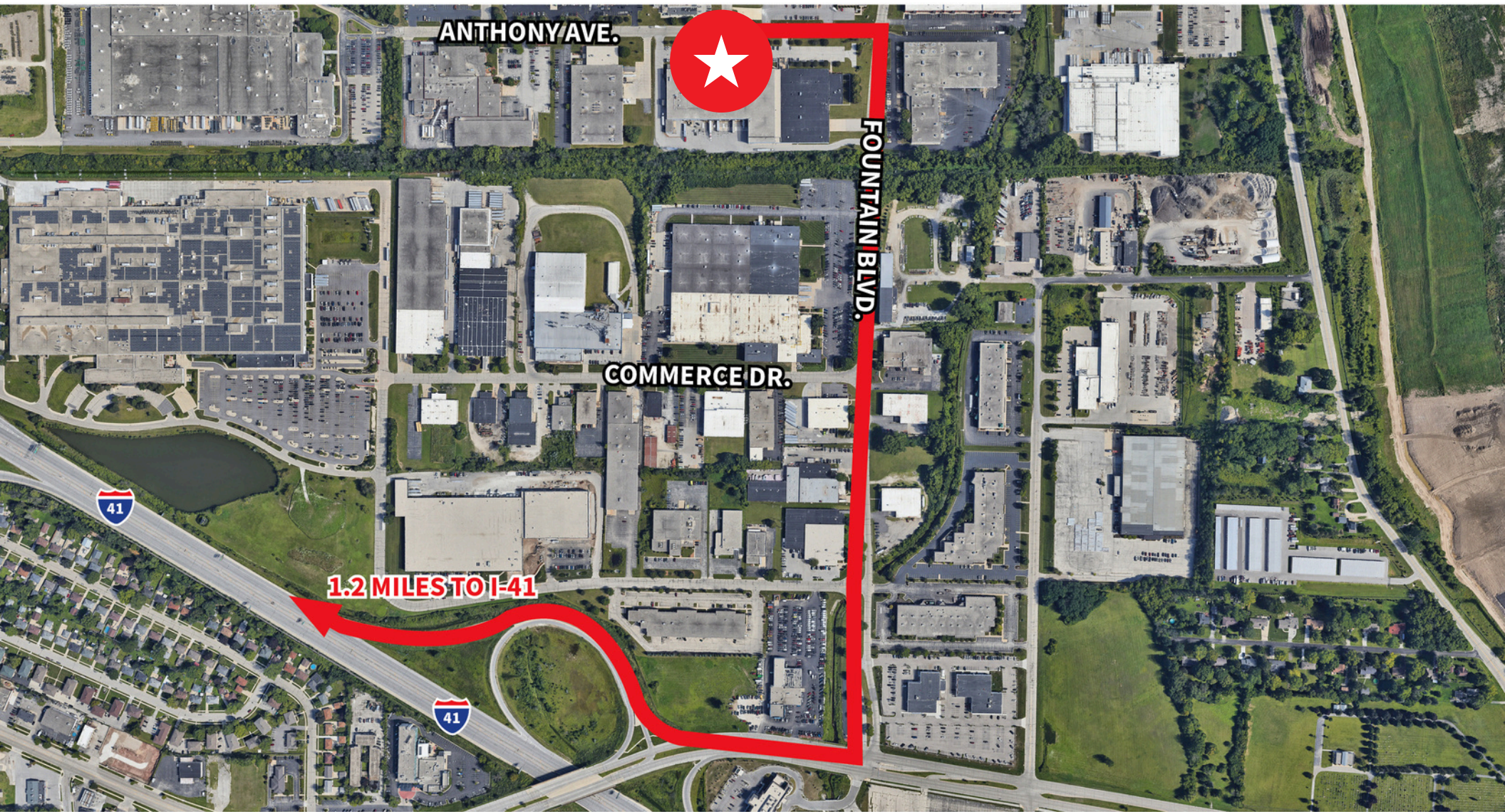
Sublease Expires

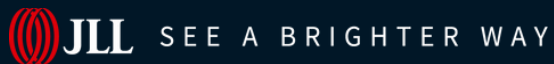
Sublease Highlights

- 26' clear height
- 5 dock doors
- 10,000 SF of "bonus space" not included in SF
- Small Warehouse Office with Break-room and Restroom



N92 W14401 Anthony Ave., Menomonee Falls, WI 53051





About JLL

For over 200 years, JLL (NYSE: JLL), a leading global commercial real estate and investment management company, has helped clients buy, build, occupy, manage and invest in a variety of commercial, industrial, hotel, residential and retail properties. A Fortune 500® company with annual revenue of \$20.9 billion and operations in over 80 countries around the world, our more than 103,000 employees bring the power of a global platform combined with local expertise. Driven by our purpose to shape the future of real estate for a better world, we help our clients, people and communities SEE A BRIGHTER WAY™. JLL is the brand name, and a registered trademark, of Jones Lang LaSalle Incorporated. For further information, visit jll.com.

Contact

Joe Carollo

Vice President

joe.carollo@jll.com

+1 414 412 3363

James Young

Senior Vice President

james.young@jll.com

+1 262 853 4002

Although information has been obtained from sources deemed reliable, neither Owner nor JLL makes any guarantees, warranties or representations, express or implied, as to the completeness or accuracy as to the information contained herein. Any projections, opinions, assumptions or estimates used are for example only. There may be differences between projected and actual results, and those differences may be material. The Property may be withdrawn without notice. Neither Owner nor JLL accepts any liability for any loss or damage suffered by any party resulting from reliance on this information. If the recipient of this information has signed a confidentiality agreement regarding this matter, this information is subject to the terms of that agreement. ©2025. Jones Lang LaSalle IP, Inc. All rights reserved